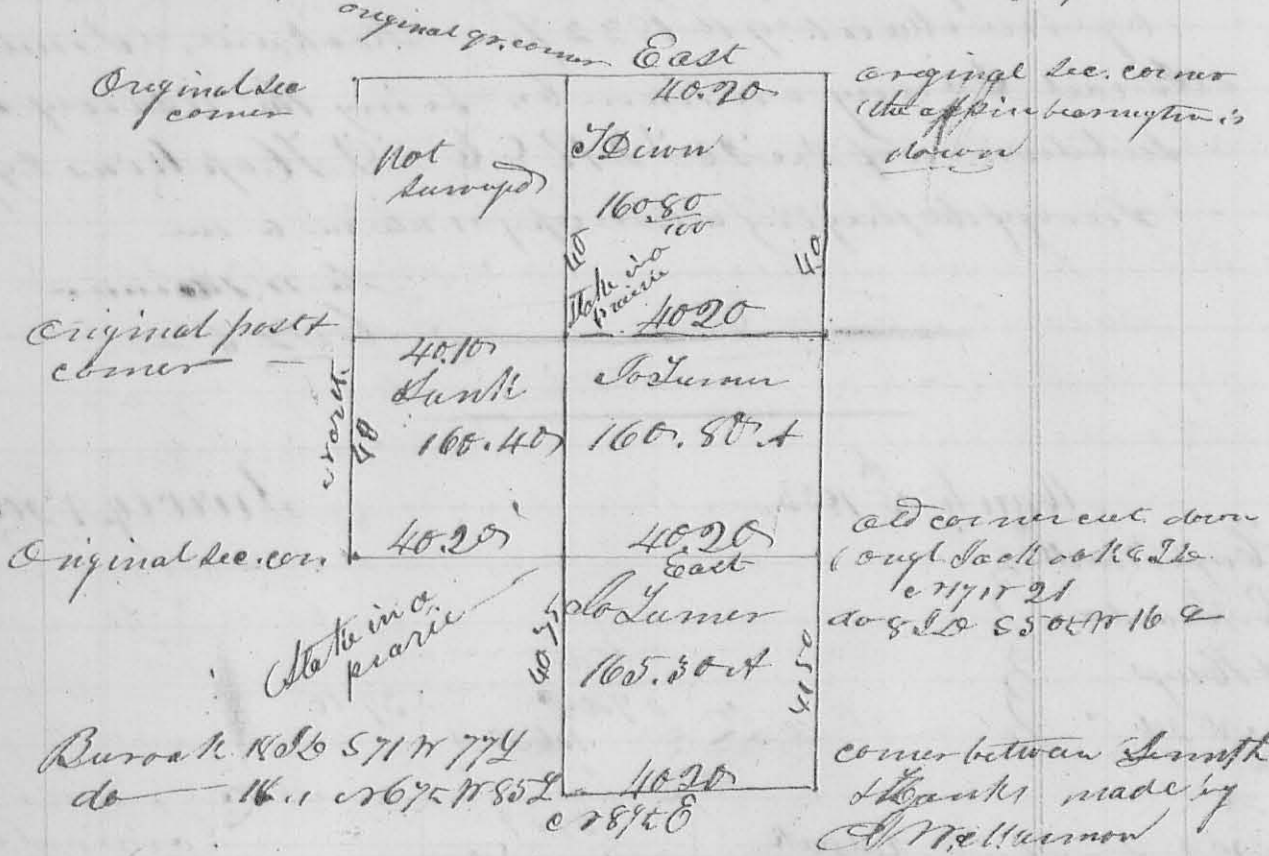


168 (8293) April 3<sup>rd</sup> 1833 ✓ Survey n<sup>o</sup> 207  
 Adams }  
 Hunt & }  
 J. Diun }  
 n<sup>o</sup> 3 of }  
 Dept work }

Survey n<sup>o</sup> 207 represents Sect. n<sup>o</sup> 3 T<sup>2</sup>  
 R. 14. W. 1/2 C. 6 q<sup>r</sup> of Sect 2 Same Town.  
 Ship & Range - Owners names are marked  
 on the several quarters  
 Orsen & Ed. Bordie chains  
 Surveyed April 3<sup>rd</sup> 1833 E. Hopkins Deputy S



I certify the above to be a correct copy of survey  
 n<sup>o</sup> 3 as made or returned to me by Dan Hopkins  
 Deputy Surveyor Fla. - James McAllister

*[Signature]*

April, 4<sup>th</sup> mo, 29<sup>th</sup> 1833 ✓ Survey n<sup>o</sup> 208  
 Wm. McBeth }  
 n<sup>o</sup> 4 of }  
 Dept work }

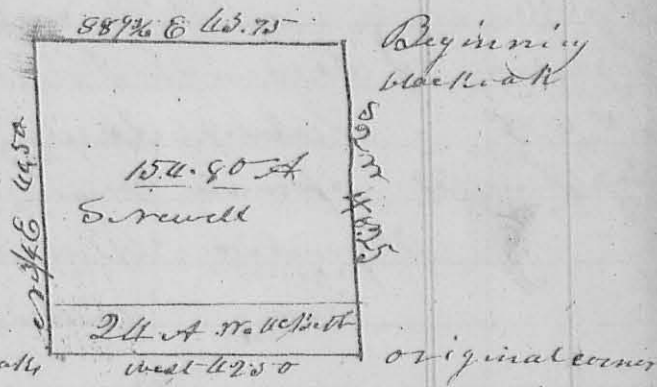
Surveyed, for Daniel Russell & William  
 McBeth, the r. & c. q<sup>r</sup> of Sect 36 T<sup>2</sup> R 13. W. 1/2  
 as follows - Beginning at the r. & c. corner of  
 the section at a black oak 12 1/2 ft. corner tree, thence  
 S 2<sup>o</sup> W 40.25 chs to original corner on the east side of  
 the sec. thence west 42.50 chs to a jack oak 6 1/2 ft. 758 1/2  
 50 L, and a jack oak 3 1/2 ft. 260 1/2 7 L (Stake in the Liberty  
 road) - thence in the road 1 3/4 E 40.50 chains to a W.O.

(8294)

169 15 S. 140 E 30 L. Black oak 15 S. 168 N 56 L. on the north line of the sec. Thence with said line S 89 1/2 E. 43.75 ch. to the beginning containing 174.80 acres

Then cut off the south side of said gr. for million.

• McBeth 24 acres by a line as follows - begin - running N 1/4 E. 5.54 chains from the S.W. corner through



at a N. 0. 18 S. 133 N 3 3 L. & W. 0 22 S. 650 N 2 oak oak

35 L - Thence East 40 chains to a N. 0. 18 S. 117 N 32 L -

Surveyed April 29<sup>th</sup> 1833  
George F. Rock } 66.  
Handy Powell }

D. Hopkins Deputy Surveyor  
I certify the foregoing to a correct as returned to my office by D. Hopkins Deputy Surveyor  
James W. Harmon  
C. L. C.

Madison  
No 5 sep

April 30<sup>th</sup> 1833

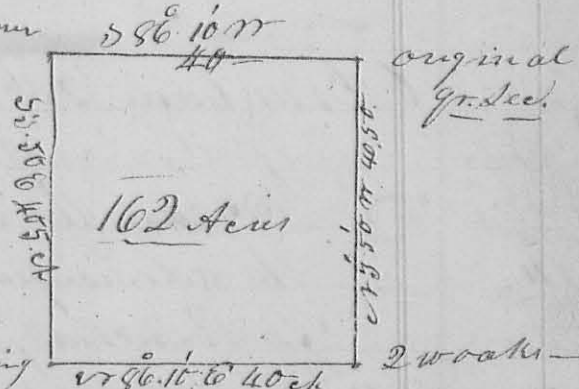
Survey No 209

for James Harmon or his grs 180.7 of

8295

R. G. & Lewis town Reserve - Beginning at the original gr corner on the west boundary - Thence N 86 1/2 E. 40 chains to a white oak 18 S. 136 N 12 L. N. 0. 9 S. 511 E.

5 Links thence N 3 5/8 W 40.50 ch to original gr. sec corner on the north line of the sec. - Thence S 86 10 N 40 ch to N.W. corner of sec.



Thence with its west line S 3 5/8 E 40.50 ch to the beginning, containing 162 acres

D. Hopkins Deputy Surveyor  
I certify the foregoing to a correct copy of Survey No 209 returned to my office by D. Hopkins - James W. Harmon  
C. L. C.

Martin Luger } 66  
James Luger }  
April 30<sup>th</sup> 1833