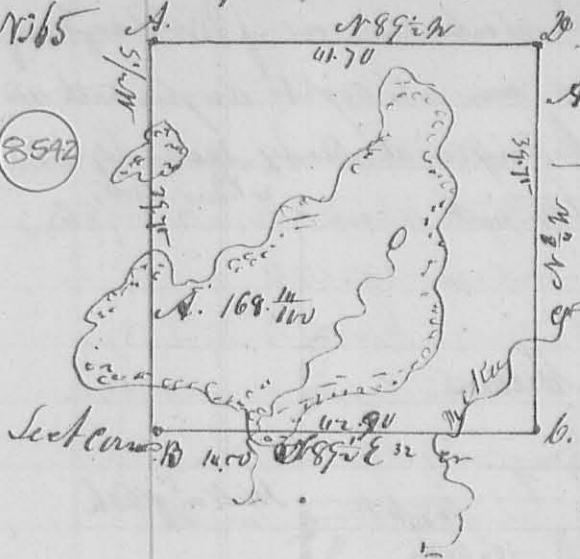


S.W. Qr. S31 T4. R13 M. <sup>4</sup> *Hebman* 1837

264

N<sup>o</sup> 365

8542



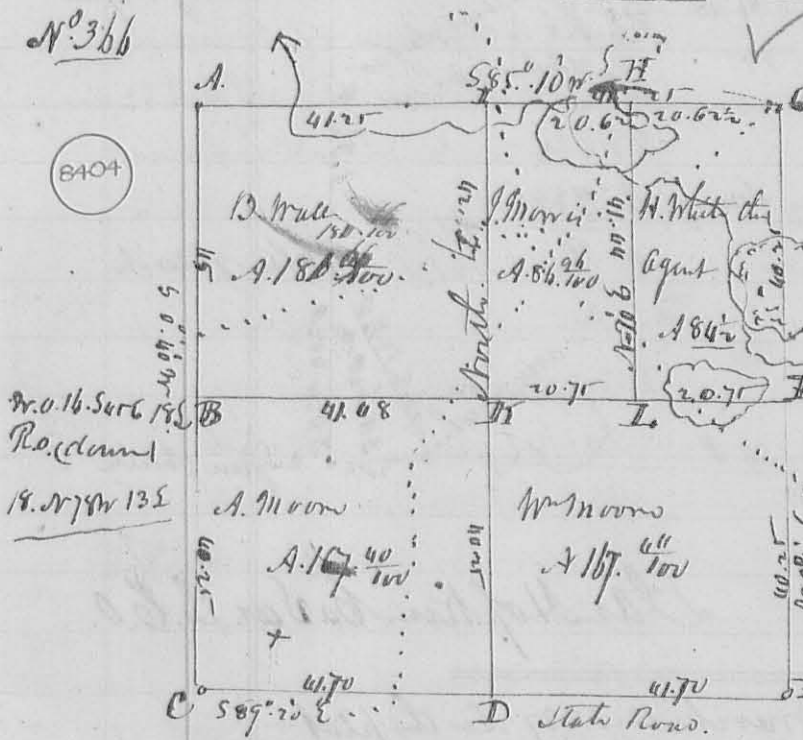
Description of Corners.

- A. Wh. oak 8 Inches diameter 50 E 6 S 1/4
- Hickory 15 " " N 62 W 40 "
- B. S.W. corner of the Sect
- C. Stone in a State road. Center of. S 1/4
- D. Stone of Jack Oak 3 S 1/4 S 1/4 W 15 S 1/4
- on other trees near.

Surveyed for John Hewitt Feb. 1837  
D. H. Hopkins, C. S. & C. O.

N<sup>o</sup> 366

8404



This Plot represents the Survey and Sub. division of S 1/4 T 4. R 13 M. between the parties whose names are marked on the Plot.

The description of Corners is as follows.

- A. NW Corner of the Section a log road S. 1/4. N 29 E 27 S 1/4
- W. Oak 6 " " N 38 W 13. "
- B. Gr. Sect. Corner between S 1/4 D 23.
- C. Sub Corner. Pot. Oak

- 18 S 1/4 D. S 13 1/4 W 16 S 1/4. The other bearing trees give a stone planted
- D. Bl. Oak 18 S 1/4 D. N 68 W 35 S 1/4. Jack oak 3 S 1/4 D. N 24 E 25 S 1/4.
- E. Bl. oak 12 S 1/4 D. N 22 E 36. White Oak (dunn) 22 " " N 65 W 26 S 1/4 -
- F. Corners to Map of Braiden, in West line of S 1/4.
- G. Stone, Wh Oak 16 S 1/4 D. S 30 W 19 S 1/4. Wh. Oak 16 S 1/4 D. N 50 E 57 S 1/4.
- H. Stone in Prarry. White oak 15 S 1/4 D. N 85 E 125 S 1/4. S. 1/4 S 1/4.
- I. White oak 18 S 1/4 D. S 86 E 46 S. Lane 20 S 1/4 D. S 61 W 35 S 1/4.
- J. Bl. Oak 18 " " S 79 W 25 S. White oak 24 S 1/4 D. N 50 E 28 S 1/4.
- K. Wh. Oak 20 " " S 29 W 15 S. Stone 2 S 1/4 D. N 14 E 36 S 1/4.

J. Campbell  
J. Beard  
Chas. -  
Feb. 1837.

Note: the South line of the above sect is in a State road.

D. H. Hopkins, C. S. & C. O.

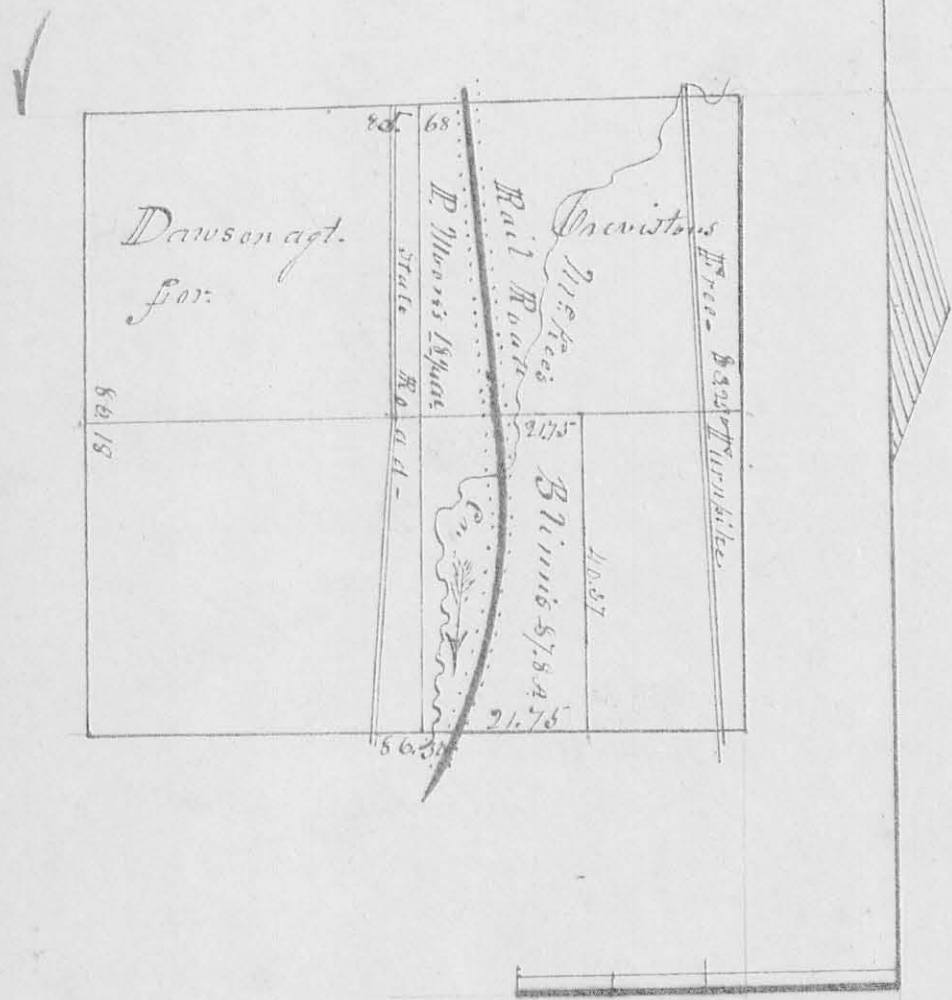


N. 29° W 20

Section Bitter Elm S.E. ~~7. 6 1/2 A.~~ <sup>links</sup> ~~27~~ <sup>Hickory</sup>  
 4 S. S. ~~4 2 1/2 E~~ <sup>43 7/8</sup> ~~34~~ <sup>47</sup> links, thence S 1/2 N 40. 87  
 chains to the beginning containing 87.80 acres -  
 This last piece was surveyed for H. D. Blinn  
 further see plat hereto attached -

O. Hayes Sur. S. C. Ohio

Geo. W. Grindle  
 Tho. S. Linker & others



N.B. The above erasures were made on the  
 27th May 1848 to correct an error made  
 in taking the bearings and distances of  
 those trees from the corners -  
 O. Hayes S. C. Ohio