

Surveyed for -

Chas. Anstine, Hrs.

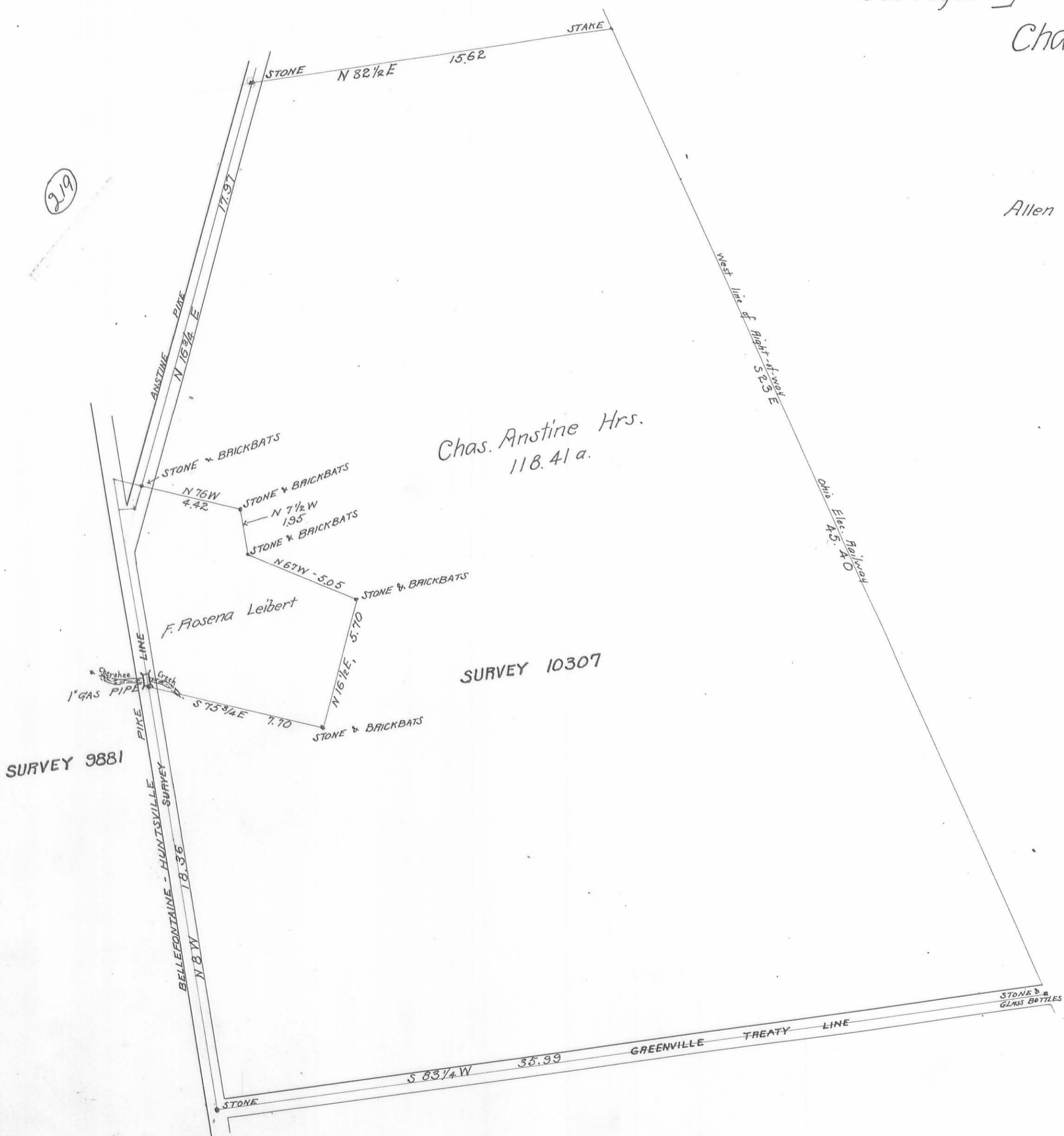
McArthur Tp, Logan Co. Ohio.

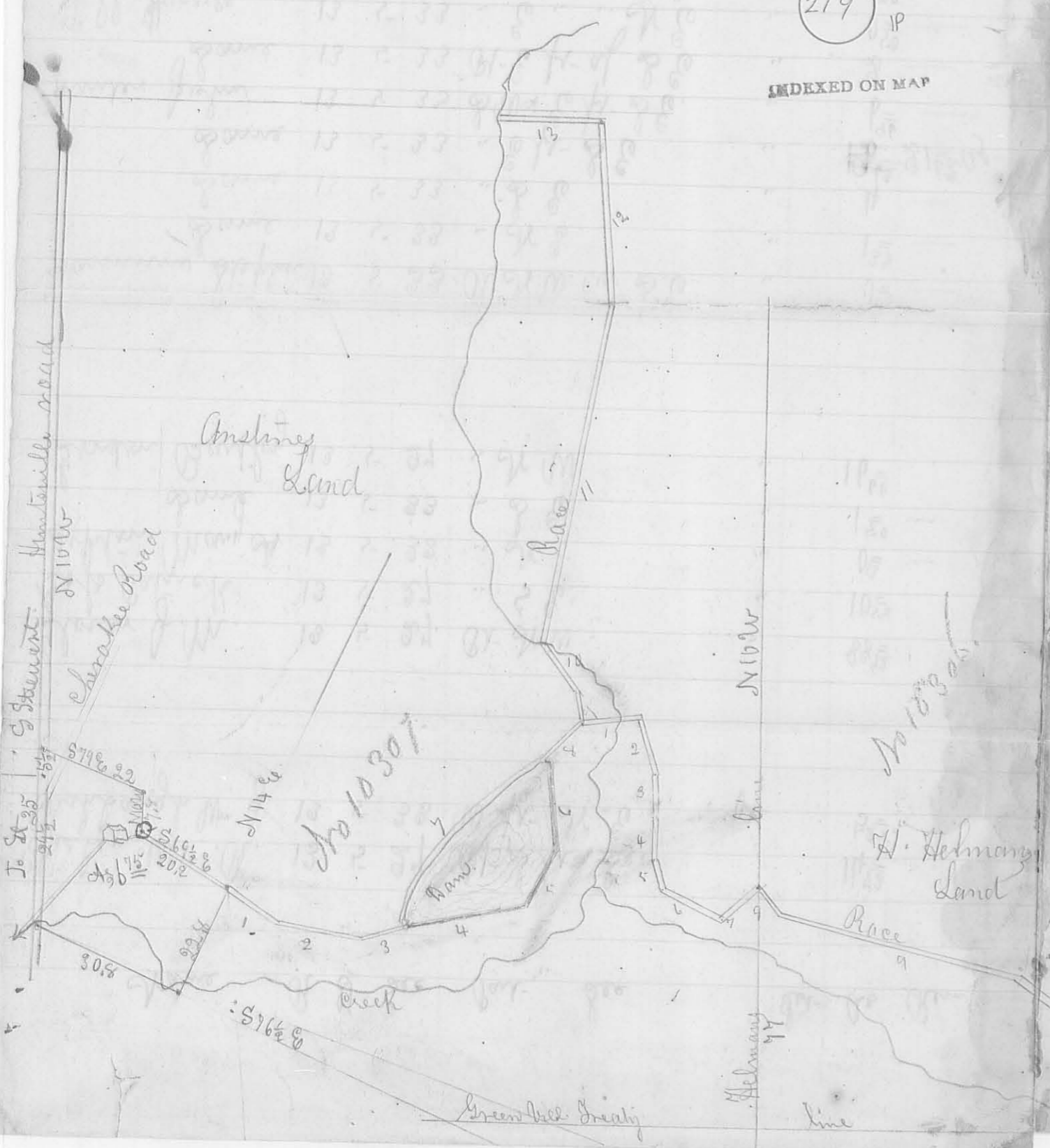
Surveyed Aug. 1st 1912.

Allen Anstine, Admr.

Henry Anstine | ch. crs.
K.P. Leibert

Harry S. Dailey, Depy. Co. Surveyor





219

INDEXED ON MAP

20.8
 7.8
 1664
 1456
 162.24

220.8
 10.4
 7
 72.8

9.76
 2.6
 9.76
 1.8
 9.76
 8.48

1.199
 5.09
 6.29
 9.6
 4.8
 5.81
 1.6

1 = 72.8
 2 = 162.24

0.99
 -5
 2.67

11
 11

9.6
 8.08
 4.86

-5.08
 10
 -5.08
 -5.99
 0.00

9.9461
 1.42
 2.86
 9.87
 8.181
 2.71
 5.868

10.1

9.3.5
 10.1
 -5.81
 5.94
 0.6
 4.20.1
 4.04
 9.1.91
 8.06
 2.06
 3.41
 5.8

3.41
 6
 2.6

RD 6-28-01 SMM OKV

Lee Surveying and Mapping Co., Inc.

Land Surveys • Topography • Subdivisions • Construction Layout

117 N. Madriver St.
Bellefontaine OH 43311



Phone: (937) 593-7335
Fax: (937) 593-7444

PHILLIPS 4.100 ACRE TRACT

Lying in Virginia Military Survey 10307, McArthur Township, Logan County, Ohio.

Being out of the Doris R. Phillips original 111.82 acre tract as deeded and described in Volume 348, Page 369, Tract I of the Logan County Records of Deeds and being more particularly described as follows:

Beginning at a MAG nail set on the Greenville Treaty Line and the south line of McArthur Township at southwest corner of Virginia Military Survey 10307 and the intersection of the center-lines of County Highway 130 and County Highway 57.

THENCE, with the west line of Virginia Military Survey 10307 and the center-line of County Highway 130 (60 feet wide), N 8°-09'-23" W, a distance of 161.85 feet to a MAG nail set.

THENCE, with the west line of Virginia Military Survey 10307 and the center-line of County Highway 130, N 7°-22'-33" W, a distance of 236.29 feet to a MAG nail set.

THENCE, N°81'-42'-16" E, a distance of 230.01 feet to a 5/8 inch iron rod set, passing a 5/8 inch iron rod set at 30.00 feet.

THENCE, N 7°-22'-23 W, a distance of 286.07 feet to a 5/8 inch iron rod set.

THENCE, N 83°-25'-50" E, a distance of 129.93 feet to a 5/8 inch iron rod set.

THENCE, S 6°-34'-10" E, a distance of 691.03 feet to a MAG nail set on the centerline of County Highway 57, passing a 5/8 inch iron rod set at 661.03 feet.

THENCE, with the Greenville Treaty Line, the south lines of McArthur Township, Virginia Military Survey 10307, and the center-line of County Highway 57 (60 feet wide), S 83°-25'-50" W, a distance of 348.00 feet to a to the point of beginning.

Containing 4.100 acres of which 0.493 acre is within the highway rights-of-way.

The basis for bearings is the Greenville Treaty Line being S 83°-25'-50" W, and all other bearings are from angles and distances measured in a field survey by Lee Surveying and Mapping Co., Inc. on May 23, 2001.

Description prepared by:

Jeffrey I. Lee
Professional Surveyor 6359
June 5, 2001



L-3150

ORIGINAL STAMP IN GREEN

INDEXED ON MAP
219 2D-1

REC'D 6-20-01 SMM OK ✓

Lee Surveying and Mapping Co., Inc.

Land Surveys • Topography • Subdivisions • Construction Layout

117 N. Madriver St.
Bellefontaine OH 43311



Phone: (937) 593-7335
Fax: (937) 593-7444

PHILLIPS 1.529 ACRE TRACT

Lying in Virginia Military Survey 10307, McArthur Township, Logan County, Ohio.

Being out of the Doris R. Phillips original 111.82 acre tract as deeded and described in Volume 348, Page 369, Tract I of the Logan County Records of Deeds and being more particularly described as follows:

Beginning at a MAG nail set on the Greenville Treaty Line and the south line of McArthur Township at southwest corner of Virginia Military Survey 10307 and the intersection of the center-lines of County Highway 130 and County Highway 57.

THENCE, with the west line of Virginia Military Survey 10307 and the center-line of County Highway 130, N 8°-09'-23" W, a distance of 161.85 feet to a MAG nail set.

THENCE, with the west line of Virginia Military Survey 10307 and the center-line of County Highway 130, N 7°-22'-33" W, a distance of 236.29 feet to a MAG nail set at THE TRUE POINT OF BEGINNING.

THENCE, with west line of Virginia Military Survey 10307 and the center-line of County Highway 130 (60 feet wide), N 7°-22'-33" W, a distance of 293.00 feet to a MAG nail set.

THENCE, N 83°-25'-50" E, a distance of 230.00 feet to a 5/8 inch iron rod set, passing a 5/8 inch iron rod set at 30.00 feet.

THENCE, S 7°-22'-23 E, a distance of 286.07 feet to a 5/8 inch iron rod set.

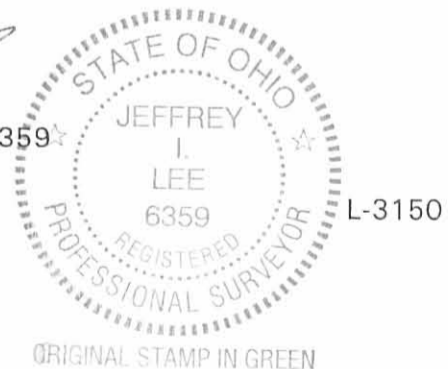
THENCE, S 81°-42'-16" W, a distance of 230.01 feet to the point of beginning, passing a 5/8 inch iron rod set at 200.01 feet.

Containing 1.529 acres of which 0.202 acre is within the highway right-of-way.

The basis for bearings is the Greenville Treaty Line being S 83°-25'-50" W, and all other bearings are from angles and distances measured in a field survey by Lee Surveying and Mapping Co., Inc. on May 23, 2001.

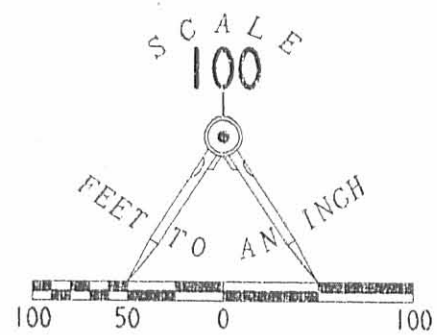
Description prepared by:


Jeffrey J. Lee
Professional Surveyor 6359
June 5, 2001



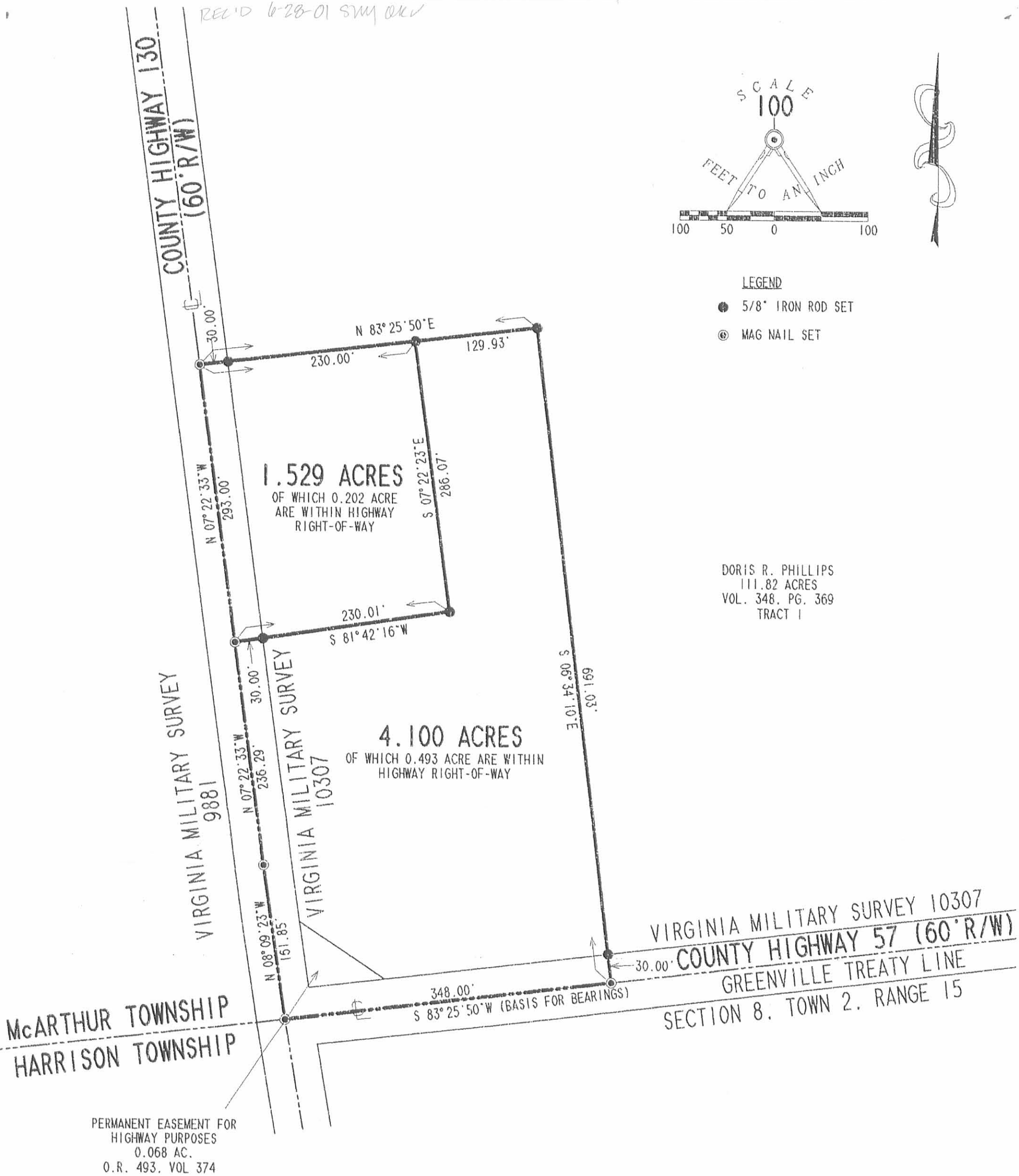
INDEXED ON MAP
219 2D-2

REC'D 6-28-01 SWM OKW



- LEGEND
- 5/8" IRON ROD SET
 - ⊙ MAG NAIL SET

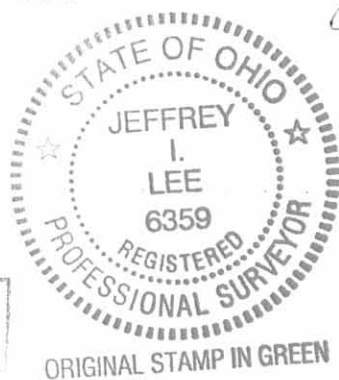
DORIS R. PHILLIPS
111.82 ACRES
VOL. 348, PG. 369
TRACT 1



SURVEY OF TWO TRACTS
OUT OF THE DORIS R. PHILLIPS
ORIGINAL 111.82 ACRE TRACT
VOLUME 348, PAGE 369, TRACT 1
VIRGINIA MILITARY SURVEY 10307
McARTHUR TOWNSHIP
LOGAN COUNTY, OHIO

SURVEYED BY:

Jeffrey I. Lee
JEFFREY I. LEE
PROFESSIONAL SURVEYOR 6359
JUNE 14, 2001



COPYRIGHT 2001 BY:
LEE SURVEYING & MAPPING CO., INC.
117 North Madriver Street
BELLEFONTAINE, OHIO 43311
(937) 593-7335

D396 L3150 L-3150-3
L3150.DAT

INDEXED ON MAP
219 2P

2 WORKING DAYS
BEFORE YOU DIG
CALL TOLL FREE 800-362-2764
OHIO UTILITIES PROTECTION SERVICE.

ORIGINAL STAMP IN GREEN

Permanent Easement for Highway Purposes

McArthur Township
Logan County, Ohio
V.M.S. 10307
2 February 2001

The following described Permanent Easement for Highway Purposes is found in McArthur Township, Logan County, Ohio and is part of V.M.S. 10307. Said permanent easement being part of Doris R. Phillips' 111.82 acre tract 1 (D.B. Vol. 348, pg. 369), assigned permanent parcel no. 23-062-00-00-023, and is more particularly described as follows:

Beginning for reference at a one-inch diameter iron bar found on the centerline of Logan County Road No. 57. Said iron bar found is centerline station 18+15 (station 18+14.28 by this survey) as shown in Logan County Engineer's Field Book No. 598, page 65.

Thence, with the centerline of C.R. 57, the South line of V.M.S. 10307, and the South line of McArthur Township, S. 83° - 25' - 50.6" W., 1701.44 feet to a point.

Thence, perpendicular to the centerline of C.R. 57, N. 6° - 34' - 09.4" W., 30.00 feet to a point on the North right-of-way line of C.R. 57. Said point being the true point of beginning for this permanent easement description.

Thence, with the North right-of-way line of C.R. 57, S. 83° - 25' - 50.6" W., 84.00 feet to a point. Said point being the intersection of the North right-of-way line of C.R. 57, with the East right-of-way line of Logan County Road No. 130.

Thence, with the East right-of-way line of C.R. 130 and with a curve to the right, 70.24 feet to a point. Said curve has a radius of 5699.58 feet and a central angle of 0° - 42' - 21.8". The long chord of said curve bears N. 8° - 19' - 23.9" W. and is 70.23 feet in length.

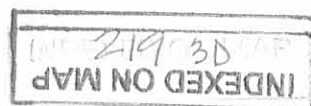
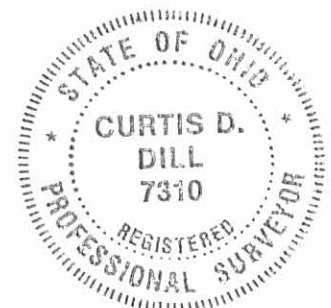
Thence, onto Phillips' 111.82 acre tract, S. 57° - 23' - 36" E., 111.13 feet to the point of beginning.

The above-described Permanent Easement for Highway Purposes contains 0.068 acres, more or less.

The basis of bearing being the centerline of Logan County Road No. 130 (N. 10° - 08' - 00" W.) as shown on R/W plan L-27 on file in the Map Room of the Logan County Engineer's Office. All other angles and distances were measured in the field.

The above permanent easement description was prepared by Curtis D. Dill, Registered Surveyor No. 7310 on February 2, 2001 from an actual field survey performed by the Logan County Engineer's Office on March 27, 1997.

Curtis D. Dill
Deputy Surveyor
Logan County Engineer's Office
Registered Surveyor No. 7310



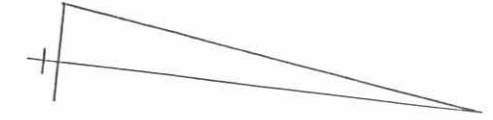
Permanent Easement for Highway Purposes

McArthur Township
Logan County, Ohio
V.M.S. 10307
2 February 2001

Being part of Doris R. Phillips 111.82 acre tract 1

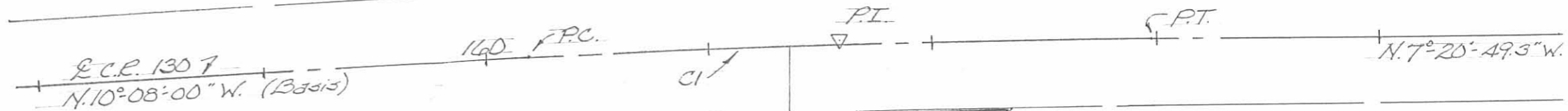
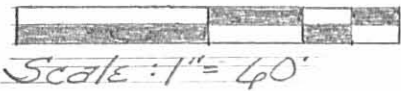
Parcel No. 09-062-00-00-062

C1
 $\Delta = 2^\circ 47' 10.7''$ Rt.
 $D_s = 1^\circ 00' 00''$
 $R = 5729.58'$
 $T = 139.34'$
 $L = 278.63'$
 $C.H. = 278.60'$
 $E = 1.69'$
 $M = 1.69'$



PC = Sta. 140+19.34
PI = Sta. 141+58.68
PT = Sta. 142+97.97

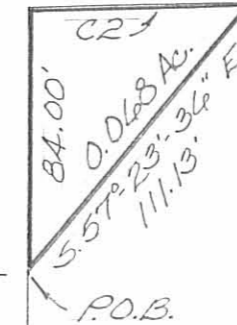
Parcel No.
23-062-00-00-043



Basis of bearing being the centerline of Logan County Road No. 130 (N. 10° 08' 00" W.) as shown on R/W plan L-27 on file in the Map Room of the Logan County Engineers Office. All other angles and distances were measured in the field.

Parcel No. 09-062-00-00-063

Frac. Sec. 8, T. 2, R. 15



C2
 $\Delta = 0^\circ 42' 21.8''$ Rt.
 $R = 5499.58'$
 $L = 70.24'$
 $L.C. = N. 8^\circ 19' 23.9''$ W.
70.23'

Doris R. Phillips
111.82 acre tract 1
D.B. Vol. 348; pg. 369
Parcel No. 23-062-00-00-023

The above permanent easement plat was prepared by Curtis D. Dill on February 2, 2001 from an actual field survey performed by the Logan County Engineers Office on March 27, 1997.

1st iron fid. Sta. 18+15 Ref. FBk. 598; pg. 65
5.83° 25' 50.4" W. 1701.44'
N. 4° 34' 09.4" W. 30.00'

V.M.S. 10307

Curtis D. Dill

Curtis D. Dill
Deputy Surveyor
Logan Co. Engineers Office
Registered Surveyor No. 7310



INDEXED ON MAP
219 3P

1 REVID 12-1-08 SMYOK

Lee Surveying and Mapping Co., Inc.

Land Surveys • Topography • Subdivisions • Construction Layout

117 N. Madriver St.
Bellefontaine OH 43311



Phone: (937) 593-7335
Fax: (937) 593-7444

DORIS R. PHILLIPS 116.230 ACRE

Lying in Virginia Military Survey 10307, McArthur Township, Logan County, Ohio.

Being all of the remainder of the Doris R. Phillips original 111.82 acre tract and original 14.50 acre tract as deeded and described in Volume 348, Page 369, Tract I and Tract II of the Logan County Records of Deeds and being more particularly described as follows:

Commencing on a 3/4 inch iron rod found on the center-line of County Highway 39 at center-line Station 23+23 (Logan County Engineer's Field Book 358, Page 21).

THENCE, with the center-line of County Highway 39 (50 feet wide), S 11°-30'-13"W, a distance of 532.26 feet to a MAG spike found at the TRUE POINT OF BEGINNING.

THENCE, with the south line of the Carpenter Construction & Custom Contracting, Ltd., 3.794 acre tract (O.R. 916, Pg. 66, Tract I), N 87°-42'-27"E, a distance of 784.87 feet to a point in Cherokee-Mans Run, passing 5/8 inch iron rods found at 25.74 feet and 749.87 feet.

THENCE, with the lines of the State of Ohio (Former C. & L.E. Railroad), the following four courses:

S 23°-23'-54"E, a distance of 206.32 feet to a point in Cherokee-Mans Run.

S 01°-45'-50"E, a distance of 151.55 feet to a 5/8 inch iron rod set, passing a 5/8 inch iron rod set at 50.00 feet.

N 82°-32'-25"E, a distance of 58.11 feet to a point in Cherokee-Mans Run, passing a 5/8 inch iron rod set at 38.11 feet.

S 23°-23'-54"E, a distance of 2984.92 feet to a railroad spike found on the south line of Virginia Military Survey 10307 and the center-line of County Highway 57.

THENCE, with the south line of Virginia Military Survey 10307 and the center-line of County Highway 57 (variable widths), S 82°-45'-23"W, a distance of 2016.22 feet to a MAG nail found.

THENCE, with the east line of the James P. Blair 4.100 acre tract (O.R. 513, Pg. 127), N 07°-14'-13"W, a distance of 691.07 feet to a 5/8 inch iron rod found, passing a 5/8 inch iron rod found at 30.00 feet.

THENCE, with the north lines of the said 4.100 acre tract and the James P. Blair 1.529 acre tract (O.R. 513, Pg. 129), S 82°-45'-07"W, a distance of 359.87 feet to a MAG nail found on the west line of Virginia Military Survey 10307 and the center-line of County Highway 130, passing a 5/8 inch iron rod found at 329.87 feet.

THENCE, with the west line of Virginia Military Survey 10307 and the center-line of County Highway 130 (60 feet wide), N 08°-03'-34"W, a distance of 254.86 feet to a MAG nail found.

THENCE, with the south line of The Board of Logan County Commissioners 0.275 acre tract (O.R. 698, Pg. 67), N 81°-55'-50"E, a distance of 299.98 feet to a 5/8 inch iron rod found, passing a 5/8 inch iron rod found at 30.00 feet.

THENCE, with the east lines of the said 0.275 acre tract and the Sam H. Browning 1.14 acre tract (O.R. 364, Pg. 708), N 07°-59'-38"W, a distance of 144.35 feet to a point in Cherokee Run Creek, passing a 5/8 inch iron rod found at 39.84 feet and a 5/8 inch iron rod set at 122.23 feet.

INDEXED ON MAP
219 4D-1

Lee Surveying and Mapping Co., Inc.

Land Surveys • Topography • Subdivisions • Construction Layout

117 N. Madriver St.
Bellefontaine OH 43311



Phone: (937) 593-7335
Fax: (937) 593-7444

THENCE, with the lines of the Christopher Michael Jones 6.75 acre tract (O.R. 905, Pg. 308), the following five courses:

S 75°-17'-32"E, a distance of 177.86 feet to a 5/8 inch iron rod found.

N 16°-32'-21"E, a distance of 376.11 feet to a stone found with bricks.

N 68°-14'-10"W, a distance of 331.56 feet to a 5/8 inch iron rod set.

N 07°-24'-43"W, a distance of 131.34 feet to a stone found with bricks.

N 76°-10'-23"W, a distance of 291.08 feet to a MAG nail found on the center-line of County Highway 39, passing a 5/8 inch iron rod found at 261.04 feet.

THENCE, with the center-line of County Highway 39, the following two courses:

N 16°-03'-07"E, a distance of 1186.58 feet to a railroad spike found at center-line Station 13+42 (Logan County Engineer's Field Book 358, Page 21).

N 11°-30'-13"E, a distance of 448.58 feet to the point of beginning.

Containing 116.230 acres, of which 2.532 acres are within the highway rights-of-way.

The basis for bearings is the center-line of County Highway 39 between center-line Stations 13+42 and 23+23, being N 11°-30'-13"E, and all other bearings are from angles and distances measured in a field survey by Lee Surveying and Mapping Co., Inc. on November 24, 2008.



ORIGINAL STAMP IN GREEN

Description prepared by:

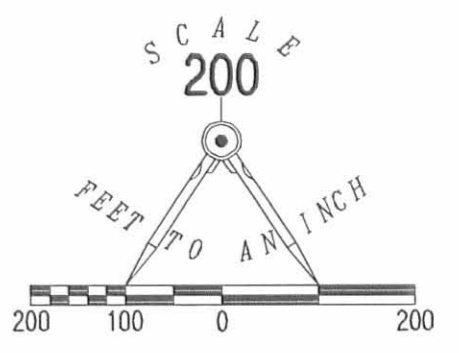
A handwritten signature in black ink that reads 'William K. Bruce'.

William K. Bruce
Professional Surveyor 7437
November 25, 2008

3150118



REC'D 12-1-08 SAM OK



- LEGEND:
- ⊕ 3/4 INCH IRON ROD FOUND
 - ⊗ MAG SPIKE FOUND
 - 5/8 INCH IRON ROD FOUND
 - 5/8 INCH IRON ROD SET
 - ⊗ RAILROAD SPIKE FOUND
 - PK NAIL FOUND
 - ⊗ STONE FOUND
 - MAG NAIL FOUND
 - ⊙ CONCRETE RIGHT-OF-WAY MONUMENT FOUND

RETRACEMENT SURVEY OF THE
DORIS R. PHILLIPS
ORIGINAL 111.82 ACRE TRACT AND
ORIGINAL 14.50 ACRE TRACT
VOLUME 348, PAGE 369
TRACT I AND TRACT II
VIRGINIA MILITARY SURVEY 10307
McARTHUR TOWNSHIP
LOGAN COUNTY, OHIO

STATION 23+23
(LOGAN COUNTY ENGINEER'S
FIELD BOOK 358, PG. 21)

CARPENTER CONSTRUCTION &
CUSTOM CONTRACTING, LTD.
3.794 ACRES
O.R. 916, PG. 66
TRACT I

DORIS R. PHILLIPS
ORIGINAL 14.50 ACRES
VOL. 348, PG. 369
TRACT II

STATION 13+42
(LOGAN COUNTY ENGINEER'S
FIELD BOOK 358, PG. 21)

COUNTY HIGHWAY 39 (50')

116.230 ACRES
OF WHICH 2.532 ACRES ARE WITHIN
THE HIGHWAY RIGHTS-OF-WAY

DORIS R. PHILLIPS
ORIGINAL 111.82 ACRES
VOL. 348, PG. 369
TRACT I

CHRISTOPHER MICHAEL JONES
6.75 ACRE
O.R. 905, PG. 308

SAM H. BROWNING
1.14 ACRES
O.R. 364, PG. 708

THE BOARD OF
LOGAN COUNTY COMMISSIONERS
0.275 ACRE
O.R. 698, PG. 67

JAMES P. BLAIR
1.529 ACRES
O.R. 513, PG. 129

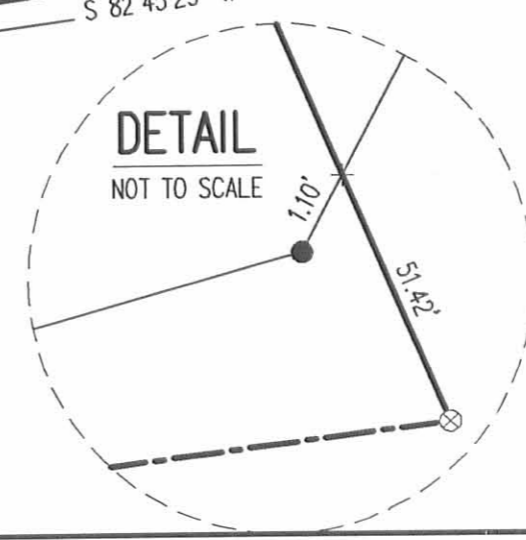
JAMES P. BLAIR
4.100 ACRES
O.R. 513, PG. 127

COUNTY HIGHWAY 130 (60')

COUNTY HIGHWAY 57 (VARIABLE WIDTHS)

McARTHUR TOWNSHIP
HARRISON TOWNSHIP

2 WORKING DAYS
BEFORE YOU DIG
CALL TOLL FREE 800-362-2764
OHIO UTILITIES PROTECTION SERVICE



SURVEYED BY:
William K. Bruce
WILLIAM K. BRUCE
PROFESSIONAL SURVEYOR 7437
NOVEMBER 24, 2008

COPYRIGHT 2008 BY:
LEE SURVEYING & MAPPING CO., INC.
117 North Madriver Street
BELLEFONTAINE, OHIO 43311
(937) 593-7335
surveys@lsmc.us

KSS D1108 3150118 L-3150-2

INDEXED ON MAP
219 4P

Chas. Austine Sewer.

Austine Mill & estate

Aug 1 - 1912

Cse O Huntsville pike N 8 - W
 Cse 39' line 5 8 1/2 W
 Austine pike 5 16 3/4 W



Commence stone in Huntsville pike at E. Tr Line (as designated by Henry Austine as having always been considered as corner). This stone is at west edge of gravel in pike in line with south ditch of road east, & in line with fence west.

— with Huntsville pike, N 8 - W

18.36 S end bridge floor over Charles

(Dist. clear bet. houses = 24 1/2 lks)

Sewer line = 6 2/3 lks E. of W. turn at S. end of bridge

18.33 line fence, E. supposed to be S. line old mill road.

19.30 1/2 N. end W. floor

20.21 O stone arch at rail road

24.54 (near) intersection O line Austine pike

25.93 set quarry stone with X on top a brick bats.

(Producing this line 17.43 further strikes iron bar on NW & orig Austine track)

This stone planted where iron bar is called for in deed, but could not be found. This stone O gravel & in line with Euseb's fence, west.

25.93 + 1.30 = 27.23 = NW & orig mill track

— N 8 1/2 E.

0.60 set quarry stone with X (and) brick bats at place where iron pipe was torn out by road grader in O Austine pike.

219

— N 16 $\frac{3}{4}$ E, with \odot Austin
pike.

at 18.95 stone in E wheel track
of pike at N. line Austin land
& NE \angle of tract \odot sold by Austin
to Fred Reer.

at 0.98 set stone - on line Mill tract.

North line

offset S. 10'

N 82 $\frac{1}{2}$ - E

14.00 \odot Cherokee

24.60 Black Hawk at SE \angle Kern

15.62 W. fence RR H-of-way

— with W. line fence - O.E. H-of-way
S 23 E

0.12 cross branch

8.67 Mill race

16.23 \odot Fred Reer - intersects
Cherokee just west of fence

28.70 Spring branch

45.40 set stone in \odot road on
Lsr Tr line & in line with
W. fence line. Stone
with X. & per glass bottle

— with Treaty line & \odot road
S 83 $\frac{1}{4}$ + W

35.99 Stone at Huntsville Pike

(219)

Mill Property - Anstine Surv.

See Deed - Vol 45 p 522
Aug 6 1867

Start. O Huntsville pike at 27.23
page 133.

S 76 + E

— 1.08 set long quarry stone
with X & brickbats in O Anstine
pike. at SE of Niss's tract.

5.50 (= 22 rods) stake

Set quarry stone with X & brick bats
Note - This stone is 98 lbs from stone
at 18.95 p. 134

5.50 - 1.08 = 4.42 net len. North line

— S 7 1/2 E

1.95 (7.80 rods) stake at N bank race

Set quarry stone with X & brickbats

— along N bank of race S 67 E
5.05 (= 20.70 rods) stake N side of race

Set flat quarry stone on edge -
X mark on top - brick bats

— S 16 1/2 W

5.70 (22.80 rods) stake at S edge of creek

Set stone & bricks

219

offset $6\frac{1}{2}$ E
~~5 1/2 E~~ - 1st chain

N 7 1/4 W N 75 3/4 W

at 7.70 drove iron bar
 at S. end end of Bridge at pile

Fixed SWC of Mill Property at
 S. end of bridge at pile.

Drove 1st pile 16" long.

offset S 6 1/2 W 1st ch

— West line with 0 pile
 N 8-W to begin.

Length west line:

27.23

18.36

8.87 chains

Allen Austine	Admr	2 da
Henry Austine	do	1 da
Lewis Kerr	ax	2 da
K. P. Leebert	do	2 da

\$150 per da. each

Allen Austine - P.O. Huntsville
 Tel
 Austine Bros - Huntsville

Make record of Survey
 Send Description with average as it is.

219