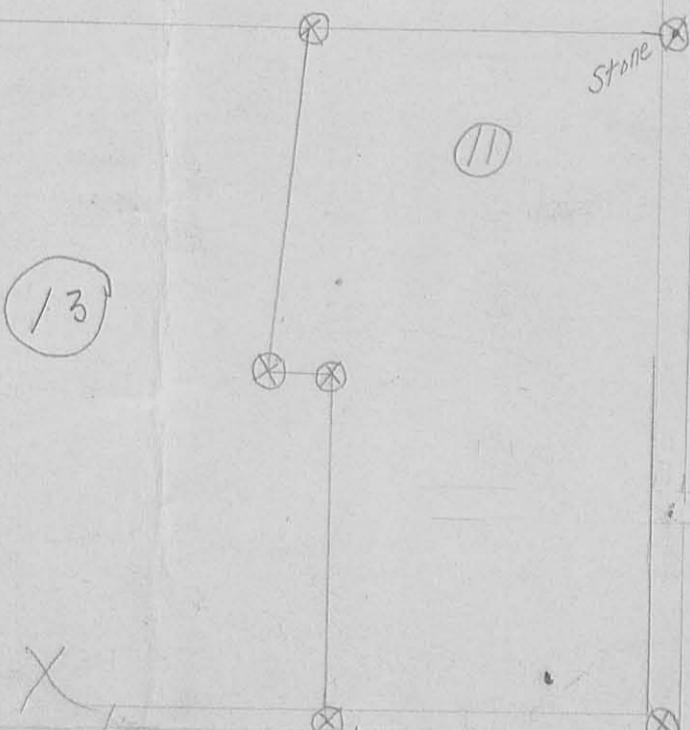


Stones, thus ⊗



W. Oak

Burr. O. Elm.

8

Is this the Vamun pe?

S 11 1/2 E, 244.6
S 11 E, 244.6

10

11

13

Stone ⊗

S 78 1/2 W - 104

Burr. O. & Hick

N 78 1/2 E, 104.

2 - W. Oaks
Bik Oak

2 - W. Oaks

Hick & R. Oak

7

Anistine

14

W. O - 8" 56 1/2 W 56 1/2 lks
W. O. 10" 55 1/2 W, 66 lks

W. O - 20" 12 1/2 lks
W. O - 50 1/2 W

W. Oak & Bik Oak

W. O - 22" 56 W, 30 1/2 (Buchanan)

2 - W. Oaks
Red Oak

Treaty Line

INDEXED ON MAP

939 IP

74 lks

Miller survey
McArthur Top

W. Oak 26" N 5 1/2 E, 20 lks
Gate post 10" sq. N 1/2 W.

W. Oak 30" S 77 E, 20 lks

VMS 10122

See Book "D"
Page 1

J. Oak 16" N 3 1/2 E - 31 lks
J. Oak 18" 56 5/8 E, 35 lks

1

9.43