

1389
INDEXED ON MAP

1389
INDEXED ON MAP

Field Notes
Book 55

PLAT OF
M'ELDIN DUNN'S LAND

SCALE - ONE INCH = TWO CHAINS

Dum Surray 3/15, '07

Line A

Found L stone at N. E. L
of 10 Acres.

Measured South $291\frac{1}{2}$ feet to
O of L post on N. line of Surray
L post of wire fence
Set stone on stone at 290.07
feet N. of

Line B.

Along N. side 10 Acres.

Measured W. from L stone
 $1596\frac{1}{2}$ feet to O L post in
Spanseller's E. fence line.

Set Temp. stone at $1596\frac{1}{2}$ feet.
Set this corner at 290.07 N.
of S. W. L of 10 Acres.

Produce this line W. to intersect
with W. line 9927 produced.

S. $83\frac{1}{4}$ W. 109 feet

see map Drawer R.

1389

INDEX BOOKS

M&Eldin Dam Survey 9/15, 1927

Line C

S. side 10 Acres.

Offset 62 feet north from L. Stone

N.W. L 9927

Chained W. on offset line

S. 83° W.

Set Temp. stake ^{on offset line} at 15.96 1/2

in old rail fence

Set Temp. Stake on W. Line

10 A. and 27 feet S. of Temp.

Stake above. This is 25 feet

N. of N. Line of 9927

Set stone on top stake at 15.96 1/2 feet

with 15" Walnut S 62 1/2 E 20 ft.

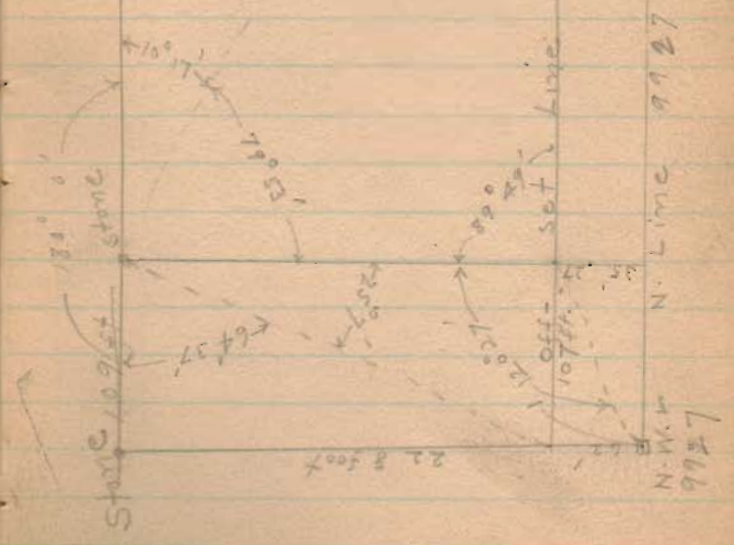
This stone is 9' N. of top of bank
of Cheronce Man's Run

4 boulders on top oak stake

L. Stone

1389
INDEXED ON MAP

Cor. Post. 3



Line D

N. $6\frac{3}{4}$ W.

248 ft. to 2 post of wire fence

Set 2 stone on top stake
at 290 feet

Line E

W. Line 9927 produced N.

N. 7 W.

$$228 + 62 = 290 \text{ feet}$$

1389

INDEXED ON MAP