



Road 108

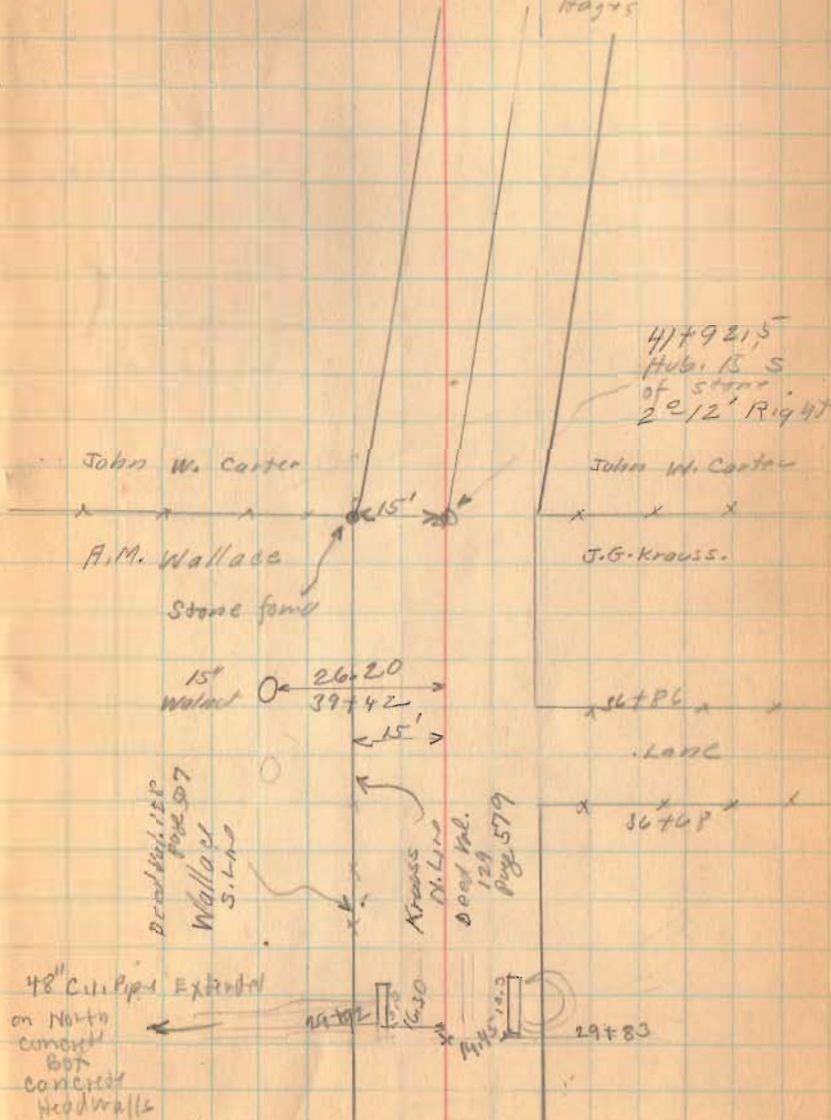
67  
86

1583

INDEXED ON MAP

July-3-1939  
dred-drawn  
Wright  
Richardson  
Fulmer  
Hays

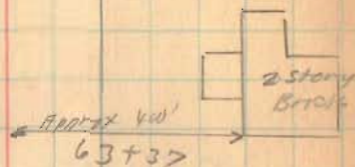
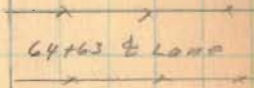
73





7-3-34 74

Road. 108



THRU 15' Elms

0  
16.80  
58+15

0  
N. 85' E.  
Needle

1 2 51' Left  
54+04.5

H.G. Patterson

A.P. Kerr

J.W. Carter

J.W. Carter

8' 1/2' width  
of  
N. 40' W.

22.00

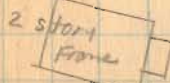
17.20

Due For H.G. (No Luck)

Set 3/8" of Iron Bar. Fair

WITNESSES (10-20-32)

D.E.G.



52+79

1583

INDEXED ON MAP





7-3-34

76

Road 108

94+70 Appoint  $\pm$

Road 49  
Patterson Pike

C.F. base

C.F. base

Hwy  $\rightarrow$  19.8  $\circ$  20" diam  
93+72

1583

INDEXED ON MAP