

Road 22

S.H. 130 To Chevrolet

1721

INDEXED ON MAP

S.H. 130  
Route 32

32

JUNE-19-1936  
cloudy A.M.  
F.W. Knight  
E. Port  
J. Montgomery

James Ryan  
4+484

A.J. Knief

12  
3792

20°  
Oak O ← 17.40  
3+30 →



Z  
2+44

Five P. sugars  
O  
O  
O  
O  
O  
O  
12.4  
1+0

N 83° 29' E

R. J. Knief

14.5  
17.00

William Weiser

259+00  
Road 6-27  
page 5

sta.  
0+00  
Oak 36.2  
post 31  
91.0'

N 6-37 W

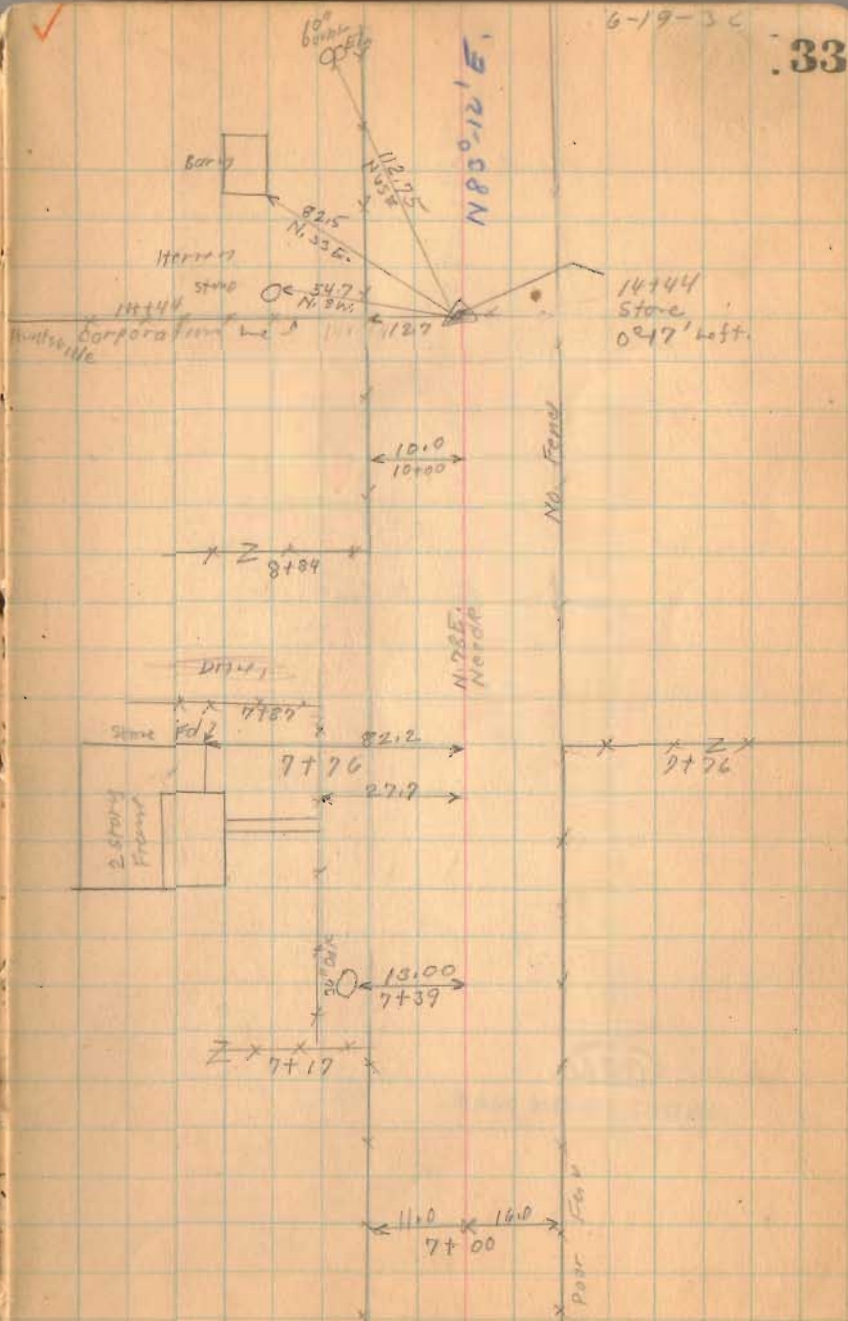
8  
Oak  
Sugar

Large  
Oak

8  
Oak  
Sugar

Road, 22

1721  
INDEXED ON MAP





Road 27

34

1163

N. 84-18 E.

Found  
April 25, 1959  
D.L.D.

stone found

19+80,  
100' Right

Very Poor Farm

N. 84-18 E.  
N. 84-18 E.  
N. 84-18 E.

900  
post  
site

30'

18.0

C.H. Snapp

Hub  
30'  
tree

William Waiser

Iq/a

x 17+76

Herren

x 21  
15+53

1st  
Front

93.55

16+45

x 2  
16+25

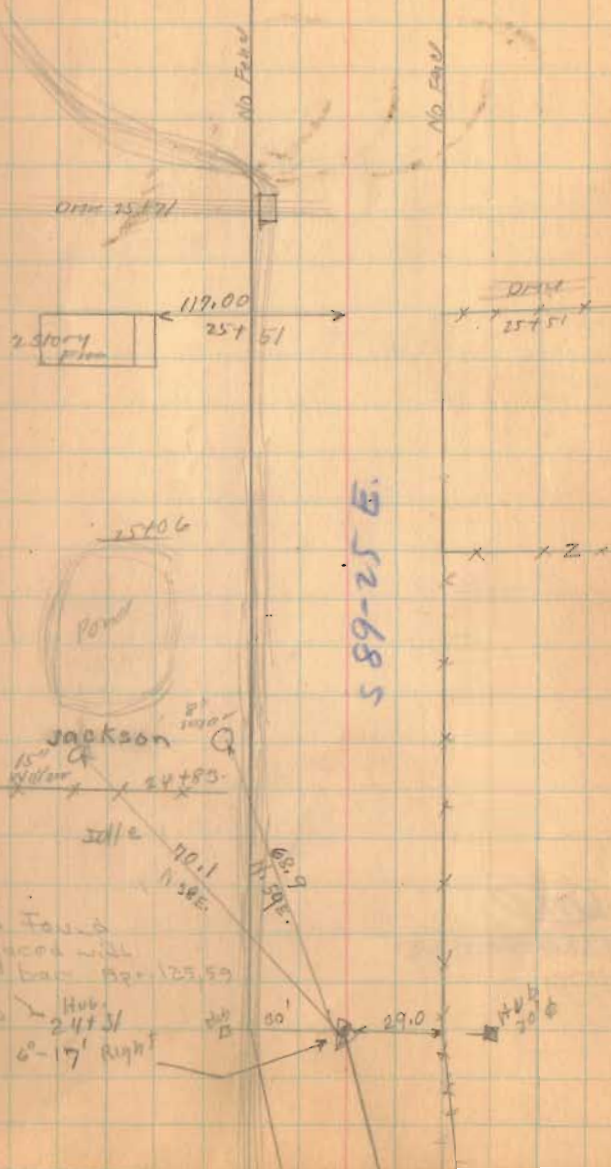
1721

INDEXED ON MAP

Road 22

679-36

35



1721

INDEXED ON MAP

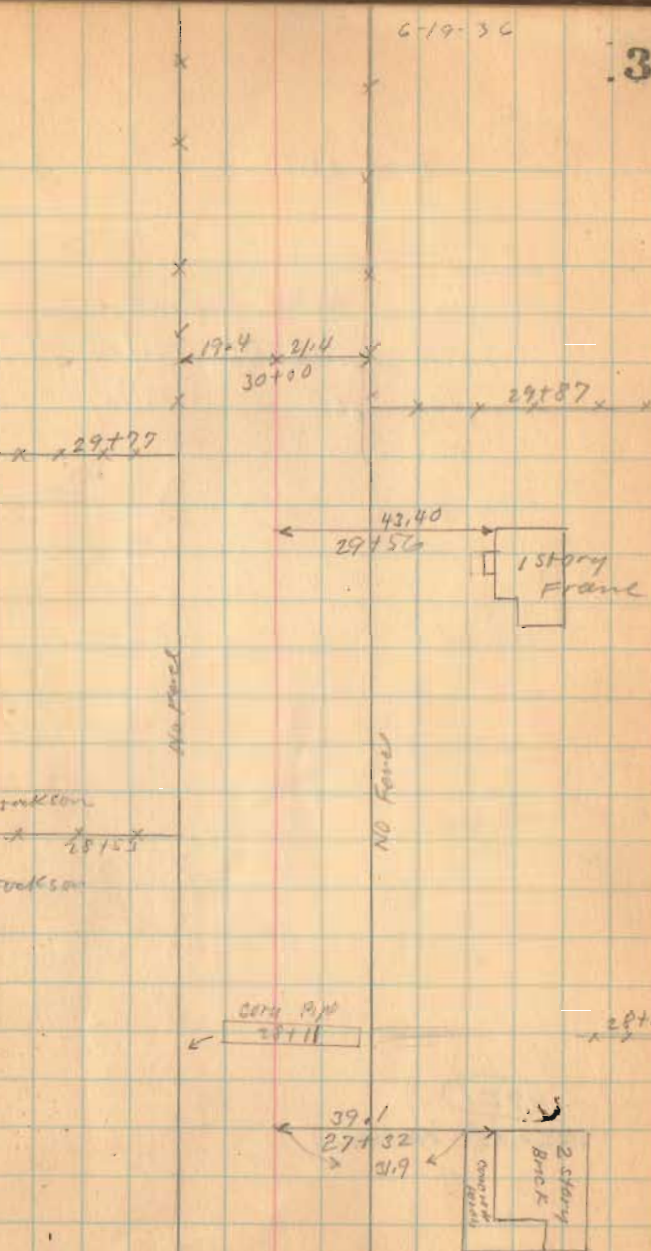
Hub Found  
Replaced with  
20' 9 bar Apr 125.59  
Hub  
24' 31'  
6'-17' Right



Road. 22

6-19-36

36



1721

INDEXED ON MAP

Road 22

Length 3192 Feet

Length 6.04545 Miles

Length 60 Miles

(1721)

INDEXED ON MAP

679-34

37

Road 22  
see Book 539 Page 55

5/8"  $\phi$  FD  
REPLACED w/ 1"  $\phi$   
8/17/72  
Iron LMG  
31+92

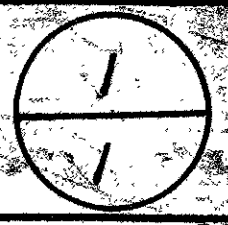
Road 39  
see Book 599  
Page 10

Road 39  
see Book 358  
Page 26

2 story  
Frame  
1 story

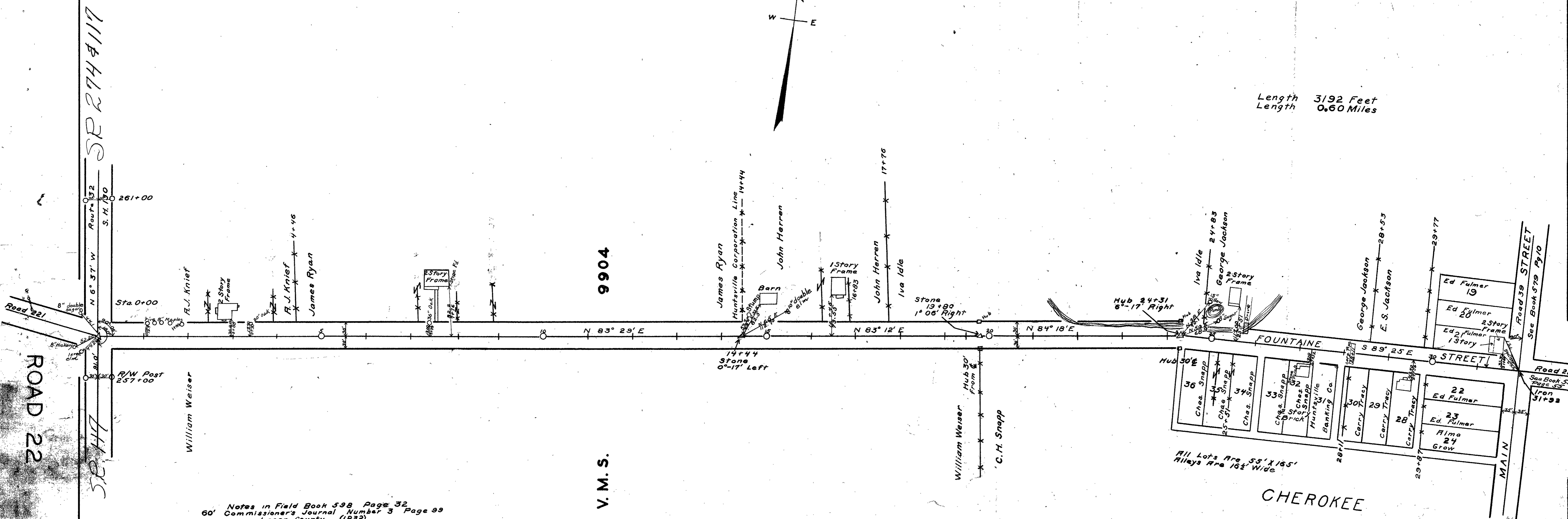
Road 22





S. R. 274

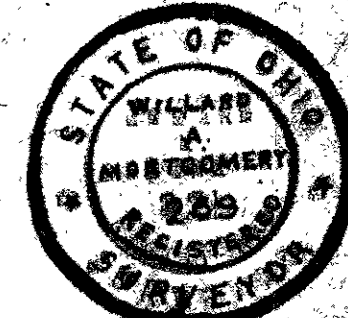
Length 3192 Feet  
 Length 0.60 Miles



Notes in Field Book 598 Page 32  
 60' Commissioner's Journal Number 3 Page 99  
 Logan County (1832)

Commissioners View June 22, 1936  
 Commissioners Hearing June 23, 1936  
 Commissioners Hearing on Damages July 23, 1936

All Lots Are 55' X 165'  
 Alleys Are 16 1/2' Wide



ROAD 22

X-22A

SR 274

SR 274

9904

V. M. S.

CHEROKEE

FOUNTAIN

ROAD 22  
 See Book 539  
 Page 132  
 Iron  
 31+32

ROAD 39 STREET  
 See Book 579  
 Pg 10

MAIN

William Weiser

William Weiser

C. H. Snapp

James Ryan

John Herren

John Herren

Iva Idle

Iva Idle

George Jackson

George Jackson

E. S. Jackson

Ed Fulmer  
 19  
 Ed Fulmer  
 20  
 Ed Fulmer  
 13 story

22  
 Ed Fulmer  
 23  
 Ed Fulmer  
 Alma  
 24  
 Grow

R. J. Knief

R. J. Knief

James Ryan

3 Story  
 Frame

1 Story  
 Frame

Barn

Stone  
 13+90  
 1° 06' Right

Hub 24+31  
 6"-17' Right

14+44  
 Stone  
 0°-17' Left

Sta. 0+00

R/W Post  
 257+00

Sta. 261+00

Route 192  
 S. H. 100

N 6° 37' W

N 83° 29' E

N 85° 12' E

N 84° 18' E

S 89° 25' E

8" double  
 3/4" dia.

8" double  
 3/4" dia.

1 1/2" iron  
 3/4" dia.

1 1/2" iron  
 3/4" dia.

1 1/2" iron  
 3/4" dia.

1 1/2" iron  
 3/4" dia.

1 1/2" iron  
 3/4" dia.

1 1/2" iron  
 3/4" dia.

1 1/2" iron  
 3/4" dia.

1 1/2" iron  
 3/4" dia.

1 1/2" iron  
 3/4" dia.

1 1/2" iron  
 3/4" dia.

1 1/2" iron  
 3/4" dia.

1 1/2" iron  
 3/4" dia.

1 1/2" iron  
 3/4" dia.

1 1/2" iron  
 3/4" dia.

1 1/2" iron  
 3/4" dia.

1 1/2" iron  
 3/4" dia.