

Road 95

50' - Commissioners Journal No. 10 Page 95
 1851
 50' sta. 0+00 To 66+40

25+00

19+00

13+90

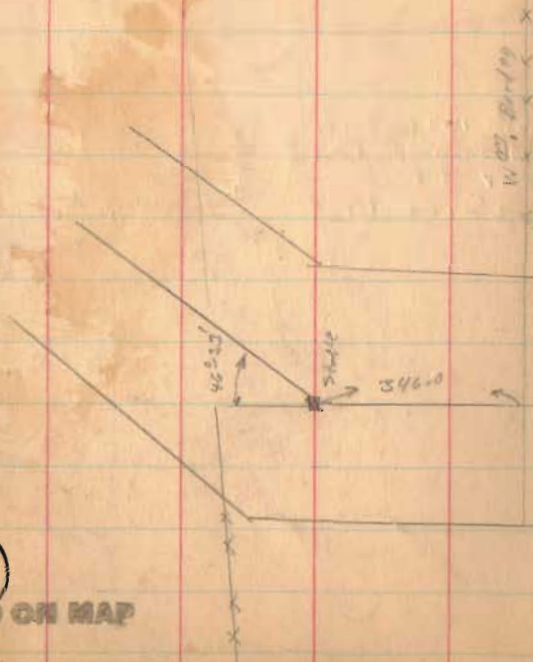
8+00

1+00

For New Posts.
 25' from

1739

REVISED ON MAP



Aug-17-1936

Clear

F. W. May

G. Wilcox

J. M. Dwyer

Max James

Joe Roberts

Frank
 McLean
 24 1/2
 24 1/2
 No Fence

19.5
 25+00

WOODS

Francis McLean
 23.5
 19+00

18+99

W. Borden
 24
 24
 24
 No Fence

42.4
 15+90

13+52

V.M.S.
 9902

8798

18.0
 6+00

V.M.S. 12168

Frank
 McLean

17.00

Road 37
 200 Book 577
 Page 6

90°-16'

68.4

Iron

Road 37

12' walnut V.M.S. 10122
 10248
 10249

15' walnut

15' walnut

24' oak

Frank
 McLean

129.1

113.4

129.1

113.4

129.1

113.4

129.1

113.4

129.1

113.4

427.06

Road 95

51+00

$$\begin{array}{r} 66+00 \\ 36+00 \\ \hline 31+92 \end{array}$$

46+00

40+00

34+60

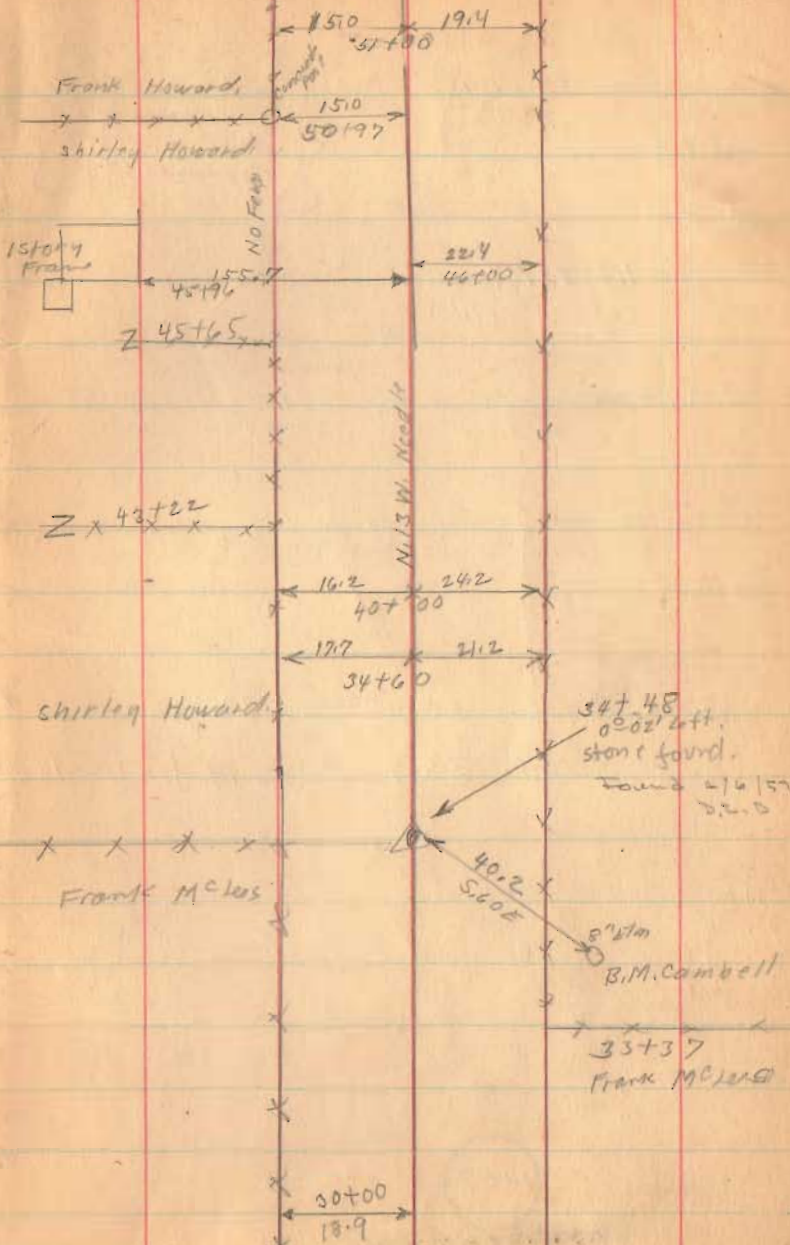
30+00

1737

INDEXED ON MAP

8-19-36

83



Road 95

See Page 74
for levels
Road 6 North
to sta. 15+22

Length 6640 Feet

Length 1.2575757 Miles

Length 1.26 Miles

33' - Road Record 2 Page 549-550-558-565
Map Page 562

Staked 25' from ϕ for sd Road
Trustees to get Additional land.

65+50

(See Book 339 Page 22 for levels)

(See Book 339 Page 19 for levels)

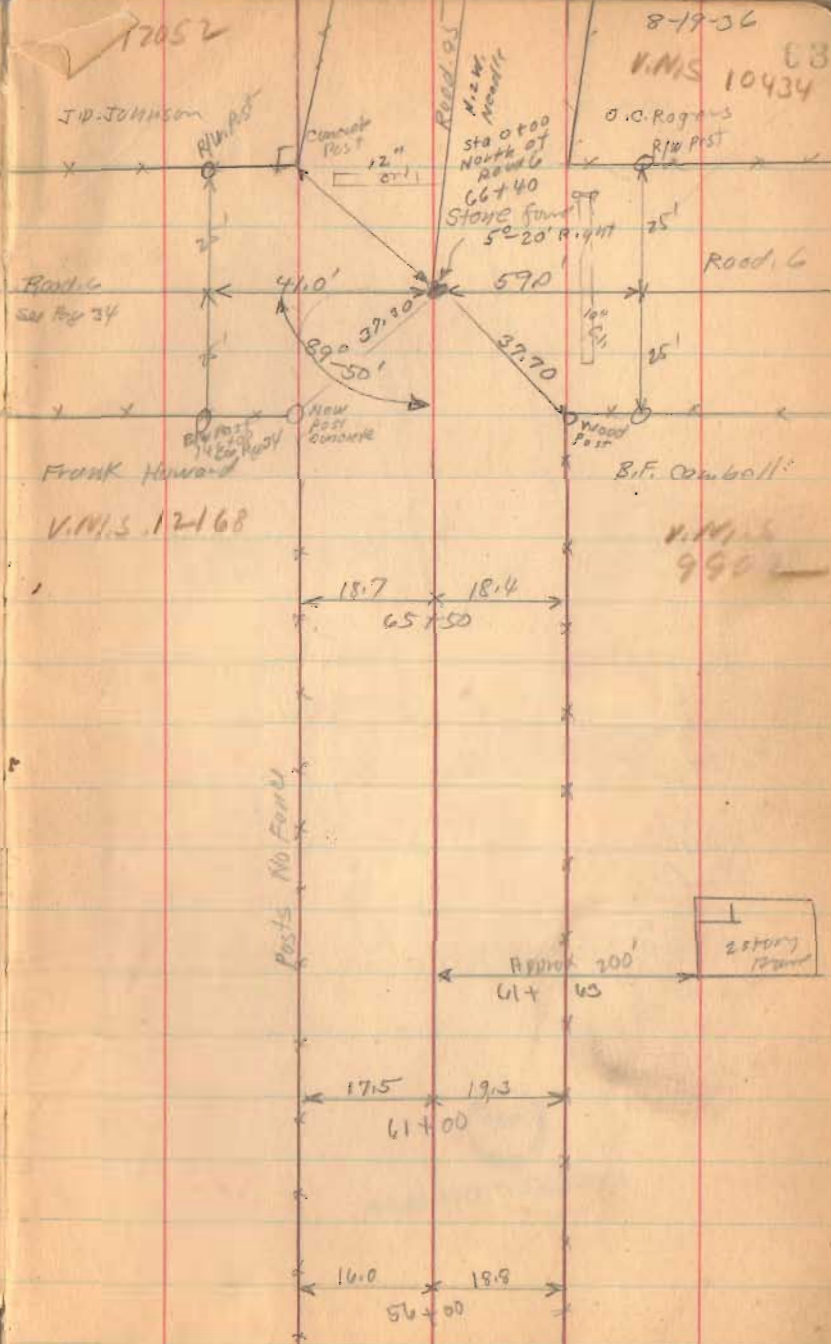
61+00

56+00

1757

INDEXED ON MAP

17052



Road. 95

23+00

16+93

10+00 right only

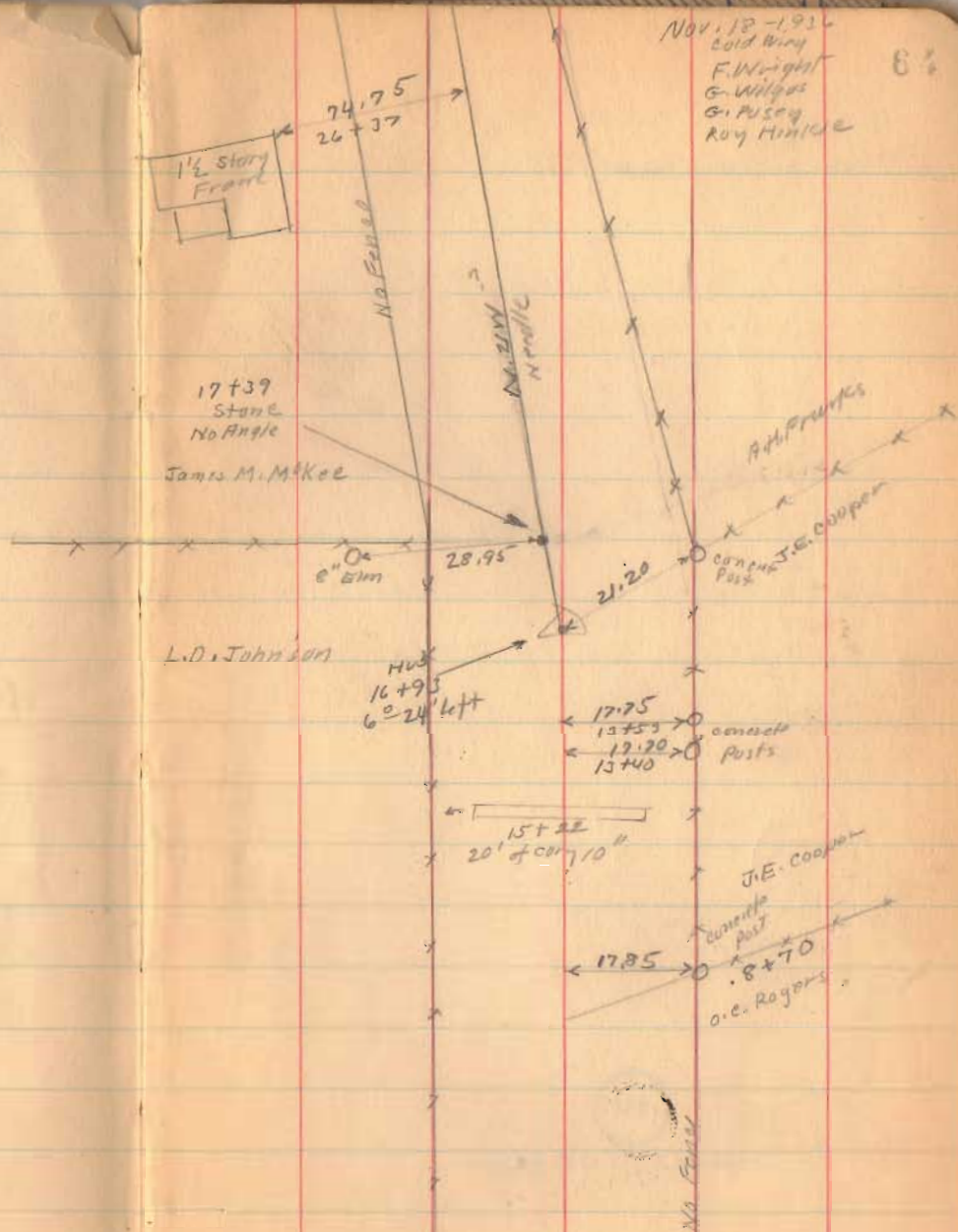
6+00 right only

1+00 right only

Set.
F.W. Light Sat.
Dec. 17-1936
G. Pussey
G. Wilgus

1737

INDEXED ON MAP



Road. 95

11-18-36

85



41+00

37+00

29+00

1737

INDEXED ON MAP

Road 95

11-18-36

EG

Stone
57+27

Jump Nail

56+85

4'25"

56+11

12'52"

Engelhaupt
Survey

9-13-62 0.96 ac. 121023'

D. Dodson

G. Geeslin

□ = 1/4" bar set

200.0

267.8

119.2'

18.15

CONF. ST.
POST

K. T. TROTT

A.C. 19° CLIFF

15' HIGH

30.20

56+58.30

56+85

G. B. L. S. R. P. (100)

58° 33'

56+11

150.0
IRON BAR FOUND
10/11/65
R.C.B.

3516

INDEXED ON MAP

N. 7 1/2° W.

1031.40

46+00

1 1/2 story

Front

55+00

47+00

1787

INDEXED ON MAP

See Book 625 Pages 57-62 for 1-cm's
See Book 625 Pages 63-75 for 1-sec.

Road 95

64+71 Twp Line Posts

63+00

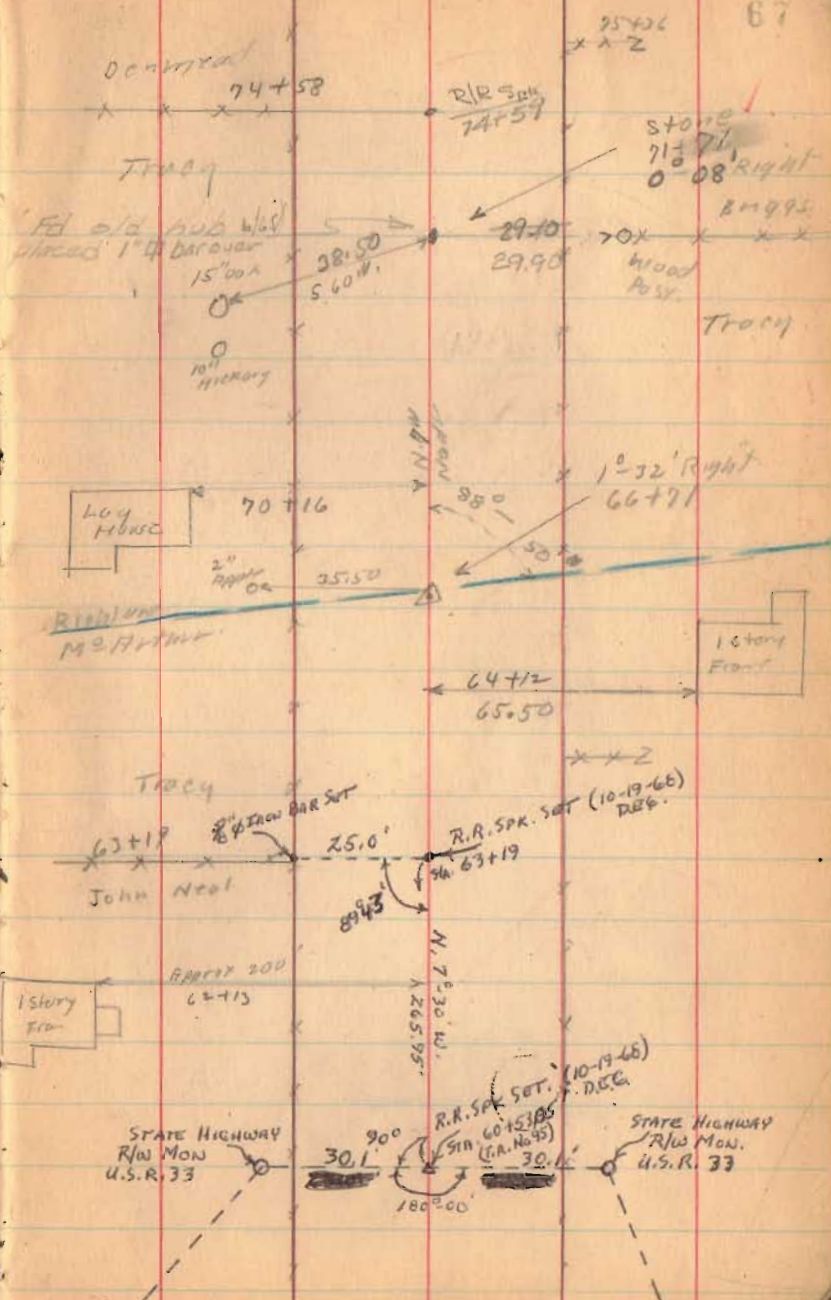
59+00

1737

INDEXED ON MAP

11-18-36

67

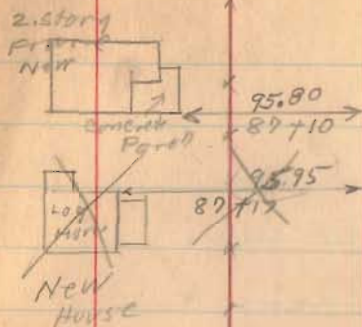


Road 95

4737
INDEXED ON MAP

11-1P-35

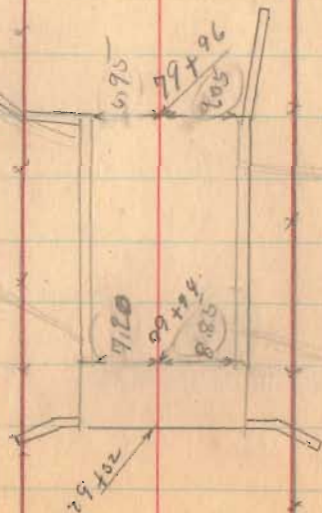
88



184292

R/R Spike
Sta. 20+18.8
NO ANGLE

CHICKEN



Road 95

Length 10039 Feet.

Length 1.9013264 Miles

Length 1.90 Miles

Road 37 TO ROAD 6 = 1.26 Miles

" 6 TO S.H. 168 = 1.90 "

Total 3.16 "

Richland Tap

Sta. 60+71 TO 100+39 = 3368 Feet

= 0.637878 Miles

0.64

1737

INDEXED ON MAP

Steel post
I beam

Wood
fence

O. B. A.
Frank
Leider

Dick Beard

Surveyed 1-7-56

Don & Dodson

INDEXED ON MAP

267.7'

17.75'

267.7'

Bolt
Found

96+95.6

95+85.6

Hook
tooth

Set

FD. 2/7/70
DEC.

FD. 2/7/70
DEC.

11-18-36

89

517+00
517+00
BM. 1002.79

Sta. 302+00
R/W Post #1
#197

N. E. 1/4

30'

30'

(R.K. Filling
Station)

100+39

R.K. Nail
Set
(2/7/70)
DEC.

74.55'

89-03-20
(1936 & 1937)
(2-7-30) DEC.

Acres: 2/7/70
11-7-50 W.
2/24'

R.K. Nail
Set
(2/7/70)
DEC.

Nail
Found

17.00'

Nail
Found

17.00'

Bolt
Found

96+95.6

95+85.6

Hook
tooth

Set

FD. 2/7/70
DEC.

FD. 2/7/70
DEC.

FD. 2/7/70
DEC.

FD. 2/7/70
DEC.

FD. 2/7/70
DEC.

FD. 2/7/70
DEC.

Sta. 505+00
R/W Post
#1
#197

N. E. 1/4

30'

30'

S.H. 168

R/W 32'

30'

30'

30'

30'

30'

30'

30'

30'

30'

30'

30'

30'

30'

30'

30'

30'

30'

30'

30'

30'

30'

30'

30'

30'

30'

30'

30'

30'

M = 1009.29 - R/W
S.H. 168

