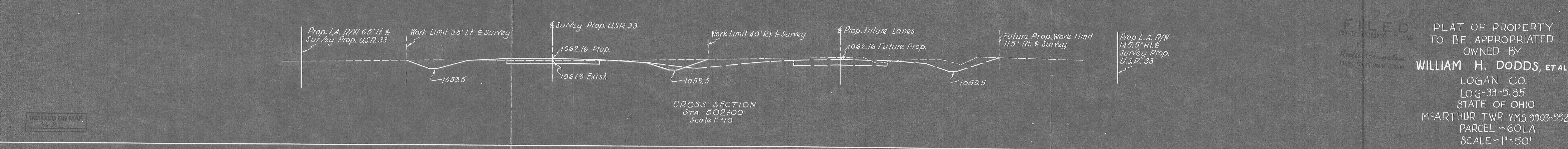
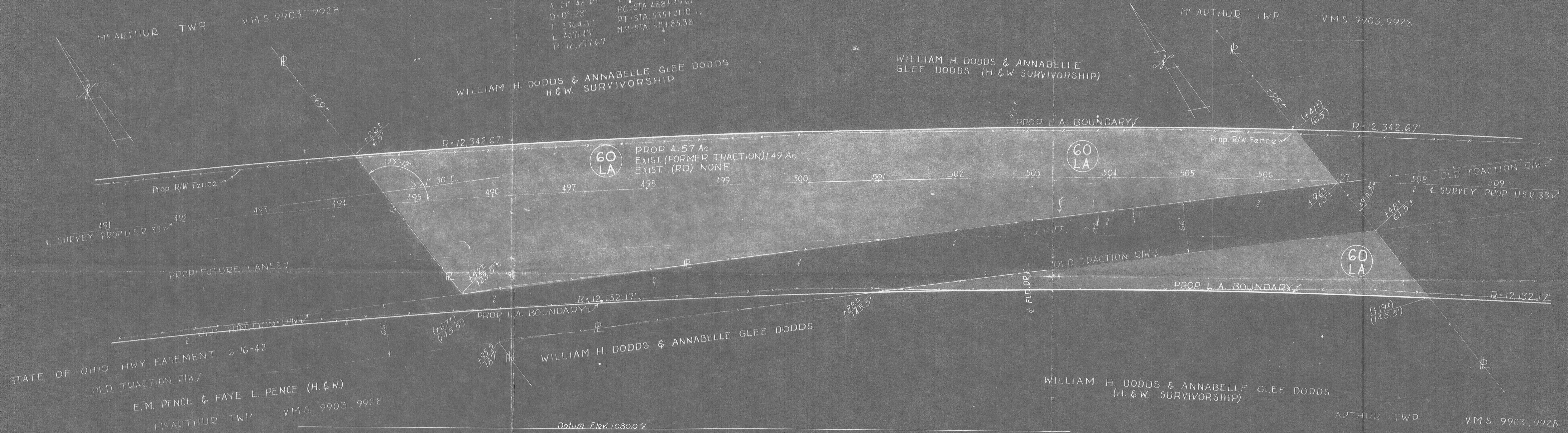


CURVE DATA
 PI STA 512+13.98
 Δ 21° 48' RT E=225.57'
 D=0° 28' PC STA 488+49.67
 T=2364.31' RT STA 535+21.10
 L=4671.43' MP STA 511+85.38
 R=12,277.67'



FILED
 COURT COMMON PLEAS
 LOGAN COUNTY, OHIO
 RUTH CRANSTON
 CLERK LOGAN COUNTY, OHIO

PLAT OF PROPERTY
 TO BE APPROPRIATED
 OWNED BY
WILLIAM H. DODDS, ET AL
 LOGAN CO.
 LOG-33-5.85
 STATE OF OHIO
 M'ARTHUR TWP. V.M.S. 9903-9928
 PARCEL ~60LA
 SCALE ~1"=50'

INDEXED ON MAP
 3622