

TRACT 'A'

Being a tract of land situated in V.M.S. 9905, McArthur Township, Logan County, Ohio and being out of that 3.76 acre tract as described in Volume 335 Page 535 of the Logan County Records of Deeds and better described as follows:

Beginning at a point in the center-line of State Route 274. Said point lying $S 82^{\circ}-24' W$ a distance of 235.0 feet from the intersection of the center-line of S.R. 274 with the center-line of County Hwy. 49. Said point also being the Northeast corner of the said 3.76 acre tract.

Thence, with the east line of said 3.76 acre tract, $S 7^{\circ}-15' E$, a distance of 428.0 feet to an iron rod in the Southeast corner of said 3.76 acre tract.

Thence, $S 82^{\circ}-24' W$, along the south line of said 3.76 acre tract, a distance of 153.46 feet to an iron rod set for the Southwest corner of this tract.

Thence, $N 7^{\circ}-15' W$, a distance of 428.0 feet to a P.K. nail set in the center-line of State Route 274.

Thence, with the center-line of S.R. 274, $N 82^{\circ}-24' E$, a distance of 153.46 feet to the point of beginning. Containing 1.509 acres.

TRACT 'B'

Beginning at a point in the center-line of State Route 274. Said point lying S $82^{\circ}-24'W$, a distance of 388.46 feet from the intersection of the center-line of S.R. 274 with the center-line of County Hwy. 49.

Thence, S $7^{\circ}-15'E$, parallel with the east line of said 3.76 acre tract, a distance of 428.0 feet to an iron rod set in the south line of said 3.76 acre tract.

Thence, S $82^{\circ}-24'W$, along the south line, a distance of 127.54 feet to an iron rod set for the southwest corner of this tract.

Thence, N $7^{\circ}-15'W$, a distance of 428.0 feet to a P.K. nail set in the center-line of S.R. 274, passing an iron rod set at 402.0 feet.

Thence, N $82^{\circ}-24'E$, with the center-line of S.R. 274, a distance of 127.54 feet to the point of beginning. Containing 1.253 acres.

Previous Reference:

Vol. 335 page 535

TRACT 'C'

Beginning at a point in the center-line of State Route 274. Said point lying S 82°-24' W, a distance of 516.0 feet from the intersection of the center-line of S.R. 274 with center-line of County Hwy. 49.

Thence, S 7°-15' E, a distance of 428.0 feet to an iron rod set in the south line of said 3.76 acre tract, passing an iron rod set at 26.0 feet.

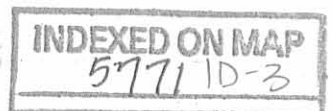
thence, with the south line, S 82°-24' W, a distance of 102.0 feet to an iron bar found at the southwest corner of said 3.76 acre tract.

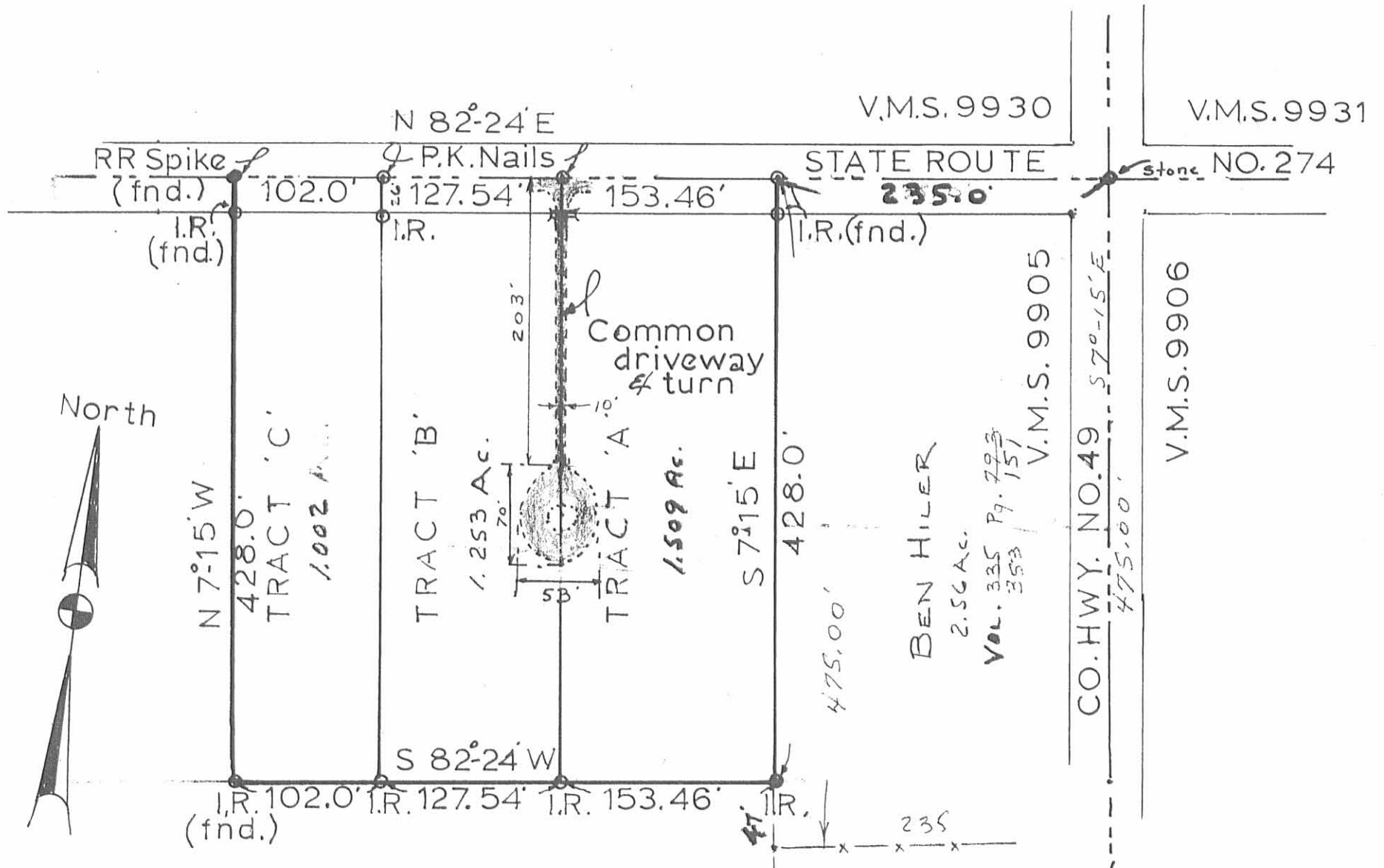
Thence, with the west line of the 3.76 acre tract, N 7°-15' W, a distance of 428.0 feet to a Railroad Spike found in the center-line of S.R. 274.

Thence, N 82°-24' E, with the center-line of S.R. 274 to the point of beginning. Containing 1.002 acres.

Previous Reference:

Volume 335 Page 535





Scale ~ 1" = 100'

I hereby certify that this plat represents a survey that was made by me.

V.M.S. 9905
 McARTHUR TOWNSHIP
 LOGAN COUNTY, OHIO

Clayton M. Lee, P.S.
 Clayton M. Lee, P.S.
 Reg. Surveyor 6181

INDEXED ON MAP
 5771 IP

April 22, 1975
 L-127-5 106-4