

WILLIAM SHIELDS TO DONALD SHIELDS DESCRIPTION  
(Nov., 1965)

Being situated in Rushereek Township, Logan County, Ohio;  
and being a part of V.M.S. #9932.

Beginning at an iron at the northwest corner of Hughes'  
79.28 acre tract.

Thence with the west line of said Hughes' tract (79.28 acres)  
S 7°-00'E 528.0 feet to an iron.

Thence S 83°-26'W 330.0 feet to an iron.

Thence N 7°-00'W 528.0 feet to an iron in the center of  
County Road #111.

Thence with the center of County Road #111 N 83°-26'E 330.0  
feet to the place of beginning.

Containing 4.00 acres more or less.

Surveyed from a 25.00 acre tract.

6140 ID

Owen K. Shirk  
Surveyor 4271

INDEXED ON MAP

Shields Survey

V.M.S. # 9932

Rushcreek Twp.

Dec. , 65

41

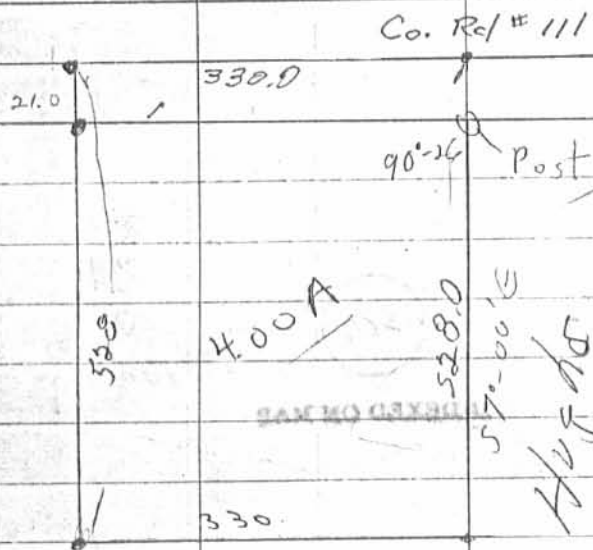
Wm Shields

Co. Rd # 111 (40 or 42' wide?)

Rushcreek Twp

V.M.S. 9932

25.00



(1) S85 $\frac{1}{2}$ ° E 33.13 Ch. with Co. Rd

Passing a corner Steno 8.89.

(2) S7° E 22.41 Ch

(3) S82° W 13. Ch

N7° W 50 lka.

S82° 14.91 Ch to iron pin

N7° 45' W 21.73 Ch to begin.

21.26  
5.83 - 28W

6140 IP

INDEXED ON MAP

Route # 2 Bellefontaine



# Lee Surveying and Mapping Co.



Farm Surveys • Lot Surveys • Topography • Subdivisions • Construction Layout

143 EAST COLUMBUS AVENUE  
BELLEFONTAINE, OHIO 43311

(513) 593-7335

JEFFREY I. LEE, P.S.

## SHIELDS (10.000 ACRES)

Lying in Virginia Military Survey 9932, Rushcreek Township, Logan County, Ohio.

Being out of the Robert E. Shields 66.44 acre tract as deeded and described in Volume 389, Page 293 of the Logan County Records of Deeds and being more particularly described as follows:

Beginning at a railroad spike set on the north line of Virginia Military Survey 9932, the center-line of County Highway 111, the northeast corner of the said 66.44 acre tract and the northwest corner of the Tony Elliott 2.00 acre tract (Vol. 407, Pg. 527).

THENCE, with the west line of the said 2.00 acre tract and the west line of the Tony Elliott 2.00 acre tract (O.R. 133, Pg. 352), S 7°-00'-07" E, a distance of 527.66 feet to a 1/2 inch iron rod found.

THENCE, with the south line of the 2.00 acre tract (O.R. 133, Pg. 352), N 83°-29'-58" E, a distance of 330.35 feet to a 5/8 inch iron rod set.

THENCE, with the west line of the Bong Oh Kim 79.28 acre tract (Vol. 356, Pg. 638), S 7°-07'-33" E, a distance of 946.22 feet to a 5/8 inch iron rod set.

THENCE, with the north lines of the David Sutherly 10.56 acre tract (Vol. 340, Pg. 186) and the Willard Roby 31.629 acre tract (O.R. 79, Pg. 856), S 83°-07'-33" W, a distance of 413.23 feet to a 5/8 inch iron rod set.

THENCE, through the said 66.44 acre tract, N 7°-07'-33" W, a distance of 1476.48 feet to a railroad spike set.

THENCE, with the north line of V.M.S. 9932 and the center-line of County Highway 111, N 83°-26'-00" E, a distance of 84.04 feet to the point of beginning.

Containing 10.000 acres of which 0.041 acre is within the highway right-of-way.

The basis for bearings is based upon the north line of Virginia Military Survey 9932 being N 83°-26'-00" E, and all other bearings are from angles and distances measured in a field survey by Lee Surveying and Mapping Company on September 30, 1992.

Description prepared by:



*Jeffrey I. Lee*  
Jeffrey I. Lee  
Professional Surveyor 6359  
October 6, 1992

L 822

ORIGINAL STAMP IN GREEN

INDEXED ON MAP  
6140 2D-1



# Lee Surveying and Mapping Co.



Farm Surveys • Lot Surveys • Topography • Subdivisions • Construction Layout

143 EAST COLUMBUS AVENUE  
BELLEFONTAINE, OHIO 43311

(513) 593-7335

JEFFREY I. LEE, P.S.

## SHIELDS (25.000 ACRES)

Lying in Virginia Military Survey 9932, Rushcreek Township and McArthur Township, Logan County, Ohio.

Being out of the Robert E. Shields 66.44 acre tract as deeded and described in Volume 389, Page 293 of the Logan County Records of Deeds and being more particularly described as follows:

Beginning at a railroad spike set on the north line of Virginia Military Survey 9932, the center-line of County Highway 111, the northeast corner of the said 66.44 acre tract and the northwest corner of the Tony Elliott 2.00 acre tract (Vol. 407, Pg. 527).

THENCE, with the north line of Virginia Military Survey 9932 and the center-line of County Highway 111, S 83°-26'-00" W, a distance of 84.04 feet to a railroad spike set at the TRUE POINT OF BEGINNING.

THENCE, S 7°-07'-33" E, a distance of 1476.48 feet to a 5/8 inch iron rod set.

THENCE, with the north lines of the Willard Roby 31.629 acre tract (O.R. 79, Pg. 856), and the Doris Henry 19.67 acre tract (O.R. 133, Pg. 352) the following three courses:

S 83°-07'-33" W, a distance of 444.07 feet to a 5/8 inch iron rod found.

N 7°-03'-32" W, a distance of 49.68 feet to a 5/8 inch iron rod found.

S 83°-07'-33" W, a distance of 302.73 feet to a 5/8 inch iron rod set, passing a 5/8 inch iron rod found at 220.56 feet.

THENCE, through the said 66.44 acre tract, N 7°-07'-33" W, a distance of 1430.81 feet to a railroad spike set.

THENCE, with the north line of V.M.S. 9932 and the center-line of County Highway 111, N 83°-26'-00" E, a distance of 746.77 feet to the point of beginning.

Containing 25.000 acres of which 12.102 acres are in McArthur Township (0.257 acre in highway right-of-way) and 12.898 acres are in Rushcreek Township (0.103 acre in highway right-of-way).

The basis for bearings is based upon the north line of Virginia Military Survey 9932 being N 83°-26'-00" E, and all other bearings are from angles and distances measured in a field survey by Lee Surveying and Mapping Company on September 30, 1992.

Description prepared by:



*Jeffrey I. Lee*  
Jeffrey I. Lee  
Professional Surveyor 6359  
October 6, 1992

L 822

ORIGINAL STAMP IN GREEN

INDEXED ON MAP  
6140 2D-2

REFERENCES:  
 LOGAN COUNTY ENGINEER'S RECORDS:  
 ROAD RECORDS FOR C.H. 111  
 FIELD BK 707, PP. 4-7  
 FIELD BK. 502, PP. 46-49  
 FILE R-3370

REFERENCE MONUMENTS SET  
 AT 25.00 FEET FROM  
 CENTER-LINE

RICHLAND TOWNSHIP  
 COUNTY HIGHWAY 111 (42' WIDE)  
 McARTHUR TOWNSHIP

V.M.S. 9952  
 V.M.S. 9932

N 07° 07' 33" W  
 1430.81'

ROBERT E. & MARY LU SHIELDS  
 66.44 ACRES  
 VOL. 389, PG. 293

25.000 ACRES

McARTHUR TOWNSHIP  
 RUSHCREEK TOWNSHIP

(12.102 ACRES OF WHICH 0.257 ACRE IS WITHIN THE HIGHWAY RIGHT-OF-WAY)  
 (12.898 ACRES OF WHICH 0.103 ACRE IS WITHIN THE HIGHWAY RIGHT-OF-WAY)

10.000 ACRES  
 OF WHICH 0.041 ACRE IS LOCATED  
 WITHIN THE HIGHWAY RIGHT-OF-WAY

TONY STEPHEN & LORIE A. ELLIOTT  
 2.00 ACRES  
 VOL. 407, PG. 527

TONY STEPHEN & LORIE A. ELLIOTT  
 2.00 ACRES  
 O.R. 133, PG. 352

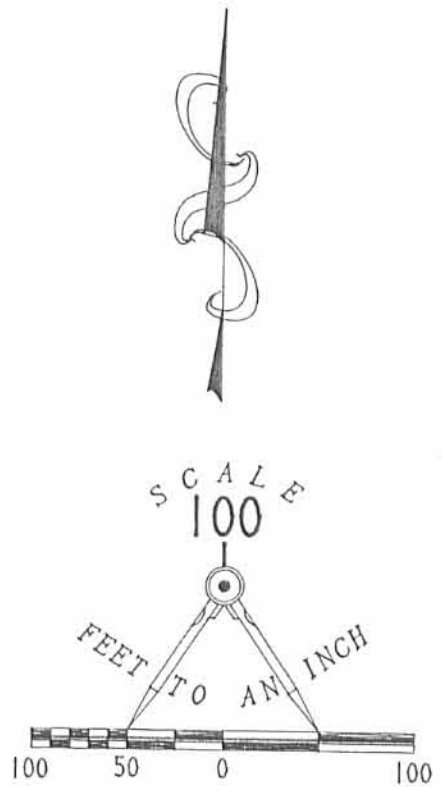
BONG OH & SOON BIN KIM  
 79.28 ACRES  
 VOL. 356, PG. 638

DORIS M. HENRY  
 19.670 ACRES  
 O.R. 133, PG. 352

WILLARD D. & MARY C. ROBY  
 31.629 ACRES  
 O.R. 79, PG. 856

DAVID L. & SIDNEY E. SUTHERLY  
 10.56 ACRES  
 VOL. 340, PG. 186

COUNTY HIGHWAY 113



LEGEND:

- 5/8" IRON ROD SET
  - ⊙ RAILROAD SPIKE SET
  - 5/8" IRON ROD FOUND
  - 1/2" IRON ROD FOUND
  - ⊗ LARGE NAIL FOUND
  - LINE NOT DRAWN TO SCALE
- ALL IRON RODS SET ARE 5/8" x 30" REBAR  
 WITH PLASTIC I.D. CAPS STAMPED "LEE PS6359"

SURVEY OF 2 TRACTS OUT OF THE  
 ROBERT E. & MARY LU SHIELDS  
 66.44 ACRE TRACT  
 DEED VOLUME 389, PAGE 293  
 V.M.S. 9932  
 McARTHUR AND RUSHCREEK TOWNSHIPS  
 LOGAN COUNTY, OHIO

INDEXED ON MAP  
 6140 2P



SURVEYED BY:  
*Jeffrey I. Lee*  
 JEFFREY I. LEE  
 PROFESSIONAL SURVEYOR 6359  
 SEPTEMBER 30, 1992

ORIGINAL STAMP IN GREEN

LEE SURVEYING & MAPPING CO.  
 143 East Columbus Avenue  
 BELLEFONTAINE, OHIO 43311  
 (513) 593-7335

D 204 SHIELDS L-822-2



# Lee Surveying and Mapping Co.



Farm Surveys • Lot Surveys • Topography • Subdivisions • Construction Layout

855 EAST SANDUSKY AVENUE  
BELLEFONTAINE, OHIO 43311

(513) 593-5780

CLAYTON M. LEE, P.S.  
JEFFREY I. LEE, P.S.

## DON SHIELDS TO ELLIOTT

Lying in V.M.S. 9932, Rushcreek Township, Logan County, Ohio

Being the south 2.00 acres off that 4.0 acre tract lying in the name of Donald Shields deeded and described in Volume 357, Page 154 of the Logan County Records of Deeds and more particularly described as follows:

Beginning at an iron rod found on the center-line of County Highway 111 marking the northeast corner of said 4 acres and designated as being Station 38+35.4 in the Logan County Engineers Records (Field Book 707, Page 6).

THENCE, with the east line of said 4 acre tract, S 7°-00'-10" E, a distance of 264.53 feet to an iron rod, passing an iron rod set on the highway right-of-way line at 21.00 feet. THE TRUE POINT OF BEGINNING.

THENCE, parallel to the highway, S 83°-26' E, a distance of 329.50 feet to an iron rod found on the west line of said 4 acre tract.

THENCE, with said west line, S 6°-56'-20" E, a distance of 264.0 feet to an iron rod found marking the southwest corner of the said 4 acre tract.

THENCE, parallel with the center-line of County Highway 111, N 83°-26' E, a distance of 329.80 feet to an iron pipe found at the southeast corner of said 4 acres.

THENCE, with the east line of said 4 acres, N 7°-00'-10" W, a distance of 264.0 feet to the point of beginning. Containing 2.00 acres.

Last previous deed reference: Volume 357, Page 154.

Surveyed by:

*Clayton M. Lee*

Clayton M. Lee  
Reg. Surveyor No. 6181  
8-7-81



6140

3D-1

INDEXED ON MAP

# Lee Surveying and Mapping Co.



Farm Surveys • Lot Surveys • Topography • Subdivisions • Construction Layout

855 EAST SANDUSKY AVENUE  
BELLEFONTAINE, OHIO 43311

(513) 593-5780

CLAYTON M. LEE, P.S.  
JEFFREY I. LEE, P.S.

## EASEMENT

### ROBERT F. SHIELDS TO DONALD L. SHIELDS

Being a 20 foot wide easement for access to that 2.00 acres retained by Donald L. Shields (South 2 acres of the original 4 acre tract, Volume 357, Page 154).

Lying on the west side of and abutting the west line of said 4 acre tract and being a part of that 66.44 acres lying in the name of Robert F. Shields (Volume 389, Page 293) and more particularly described as follows:

Beginning at a point on the center-line of County Highway 111 marking the northwest corner of said 4 acre tract.

THENCE, with said center-line, S 83°-26' W, a distance of 20.00 feet.

THENCE, parallel to and 20 feet westerly from the west line of said 4 acre tract, S 6°-56' -20" E, a distance of 284.53 feet.

THENCE, parallel to the highway, N 83°-26' E, a distance of 20.00 feet to a point on the west line of said retained 2 acres a distance of 20 feet southerly from its northwest corner.

THENCE, with the west line of the original 4.00 acre tract, N 6°-56' -20" W, a distance of 284.53 feet to the point of beginning. Containing 5690 square feet.

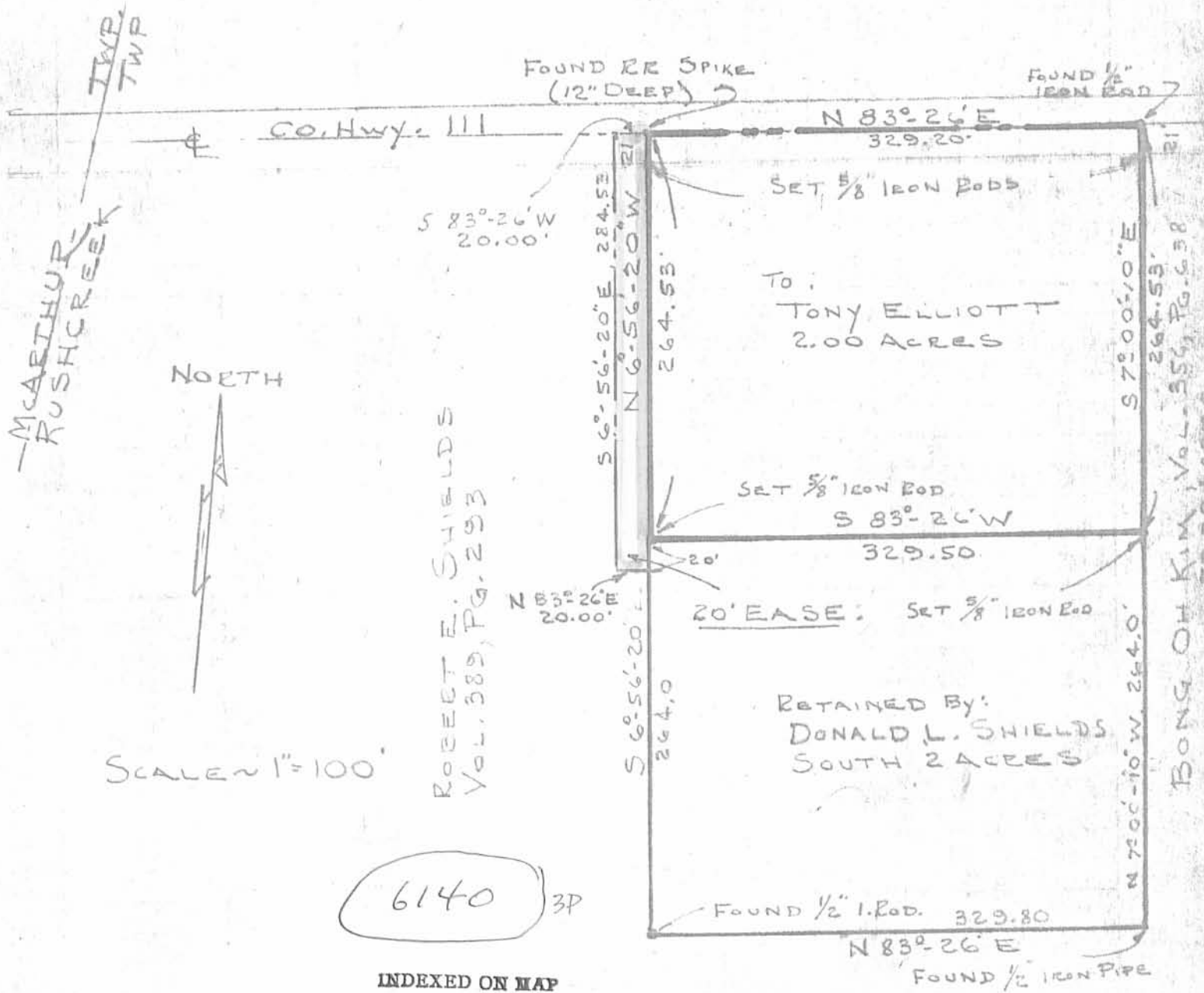
Previous deed references: Volume 389, Page 293 and Volume 357, Page 154.

Prepared by:



*Clayton M. Lee*  
Clayton M. Lee  
Reg. Surveyor No. 6181  
10-14-81

6140  
3D-2  
INDEXED ON MAP



SCALE 1" = 100'

6140 3P

INDEXED ON MAP

SPLIT OF DONALD L. SHIELDS 4.00 ACRE TRACT (VOL. 357, Pg. 154) V.M. S. 9932, RUSHCREEK TWP. LOGAN COUNTY, OHIO



Clayton M. Lee  
 CLAYTON M. LEE  
 REG. SURVEYOR 6181  
 5-6-81