

REC'D 1-7-03 SMM/OK

# Lee Surveying and Mapping Co., Inc.

Land Surveys • Topography • Subdivisions • Construction Layout

117 N. Madriver St.  
Bellefontaine OH 43311



Phone: (937) 593-7335  
Fax: (937) 593-7444

## WILLIAMS 3.000 ACRES

Lying in Virginia Military Survey 12320, McArthur Township, Logan County, Ohio.

Being out of the Chad E. Williams 25.87 acre tract as deeded and described in Official Record 373, Page 326, of the Logan County Records of Deeds and being more particularly described as follows:

Beginning at a P.K. nail found on the center-line of Ohio Route 117 at the southeast corner of the said 25.87 acre tract on center-line station 261+17.95 (O.D.O.T. R/W plans, OH 117).

THENCE, with the center-line of Ohio Route 117 (width varies), N 7°-36'-00" W, a distance of 35.00 feet to a MAG nail set at the TRUE POINT OF BEGINNING.

THENCE, S 82°-24'-00" W, a distance of 568.17 feet to a 5/8 inch iron rod set, passing a 5/8 inch iron rod set at 56.47 feet.

THENCE, N 7°-36'-00" W, a distance of 230.00 feet to a 5/8 inch iron rod set.

THENCE, N 82°-24'-00" E, a distance of 568.17 feet to a MAG nail set, passing a 5/8 inch iron rod set at 508.17 feet.

THENCE, with the center-line of Ohio Route 117, S 7°-36'-00" E, a distance of 230.00 feet to the point of beginning.

Containing 3.000 acres, of which 0.249 acre is within the highway right-of-way.

The basis for bearings is the center-line of Ohio Route 117, being N 7°-36'-00" W, and all other bearings are from angles and distances measured in a field survey by Lee Surveying and Mapping Co., Inc. on October 25, 2002.

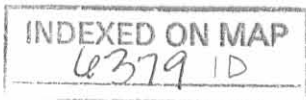
Description prepared by:

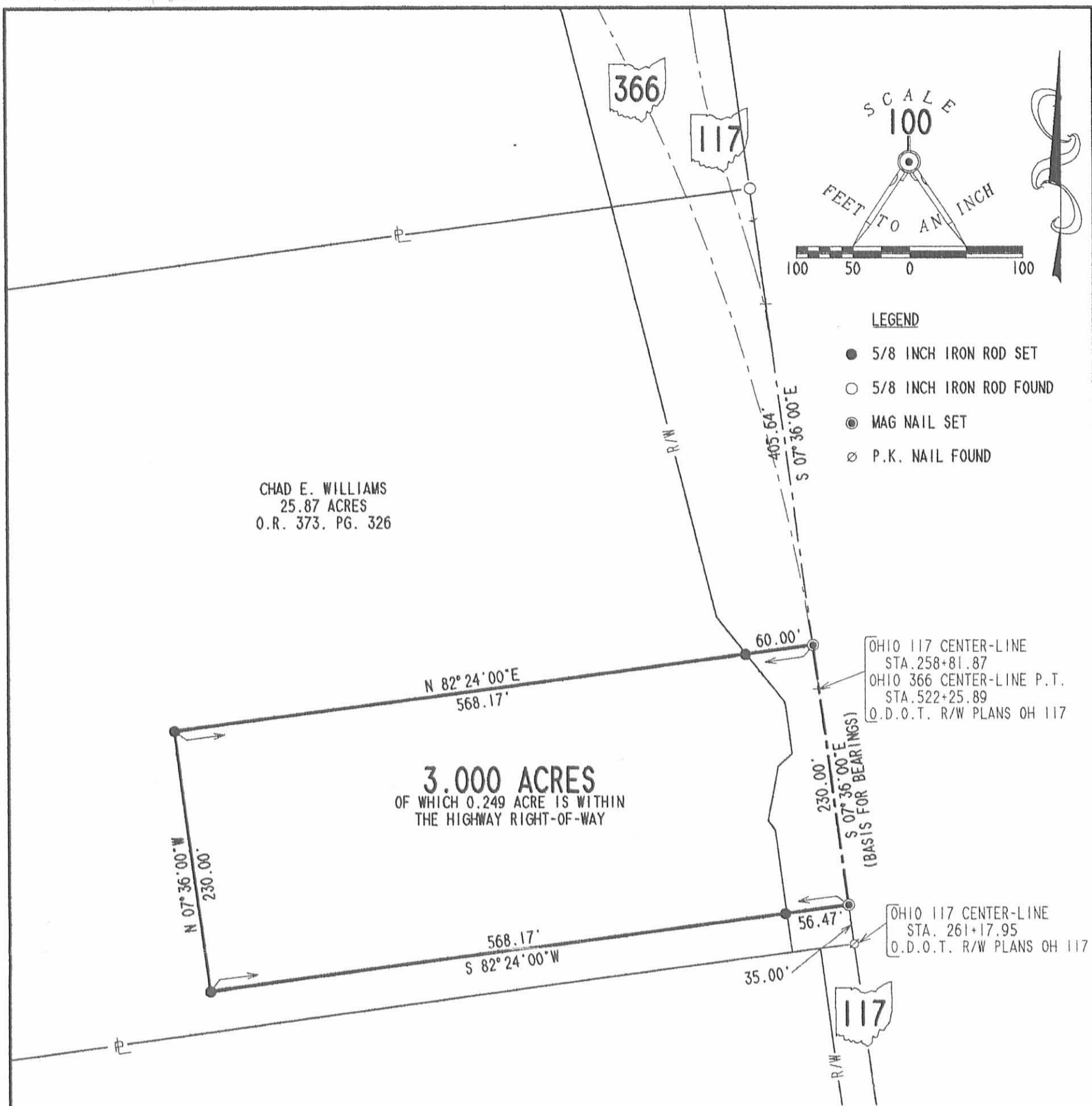


ORIGINAL STAMP IN GREEN

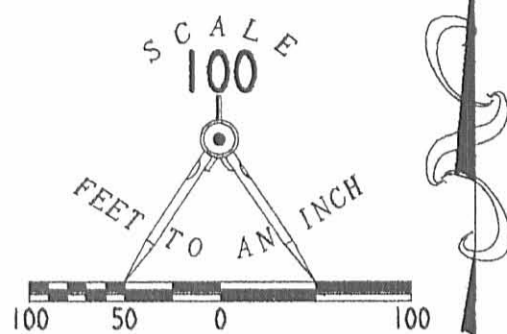
*Jeffrey I. Lee*  
Jeffrey I. Lee  
Professional Surveyor 6359  
October 28, 2002

L-3464





CHAD E. WILLIAMS  
 25.87 ACRES  
 O.R. 373. PG. 326



- LEGEND**
- 5/8 INCH IRON ROD SET
  - 5/8 INCH IRON ROD FOUND
  - ⊙ MAG NAIL SET
  - ⊗ P.K. NAIL FOUND

OHIO 117 CENTER-LINE  
 STA. 258+81.87  
 OHIO 366 CENTER-LINE P.T.  
 STA. 522+25.89  
 O.D.O.T. R/W PLANS OH 117

OHIO 117 CENTER-LINE  
 STA. 261+17.95  
 O.D.O.T. R/W PLANS OH 117

**SURVEY OF 3.000 ACRES OUT  
 OF THE CHAD E. WILLIAMS  
 25.87 ACRE TRACT  
 OFFICIAL RECORD 373, PAGE 326  
 VIRGINIA MILITARY SURVEY 12320  
 MCARTHUR TOWNSHIP  
 LOGAN COUNTY, OHIO**

INDEXED ON MAP  
 6379 IP



SURVEYED BY:  
  
 JEFFREY L. LEE  
 PROFESSIONAL SURVEYOR 6359  
 OCTOBER 25, 2002

2 WORKING DAYS  
**BEFORE YOU DIG**  
 CALL TOLL FREE **800-362-2764**  
 OHIO UTILITIES PROTECTION SERVICE.

ORIGINAL STAMP IN GREEN

COPYRIGHT 2002 BY:  
**LEE SURVEYING & MAPPING CO., INC.**  
 117 North Madriver Street  
 BELLEFONTAINE, OHIO 43311  
 (937) 593-7335

LESLIE H. GEESLIN  
REGISTERED SURVEYOR NO. 5248  
P. O. BOX 274  
RUSHSVLVANIA. OHIO 43347

TELEPHONE: (513) 468-2793

PARR SURVEY

February, 19<sup>00</sup>

The following described real estate situated in the State of Ohio, County of Logan, Township of McArthur and being part of Virginia Military Survey No. 12320 and more particularly described as follows:

Beginning at a p.k. nail in the centerline of State Route 117 at the northeast corner of Hazel Whitaker's 25.70 acre tract; thence with said Whitaker's north line S. 83° 36' W. 1687.90 feet to a stone in the east line of Donald Ritter's 41.30 acre tract; thence with said Ritter's east line N. 5° 04' 38" W. 673.56 feet to a stone at the southwest corner of Ursula Gillen's 22.25 acre tract; thence with said Gillen's south line N. 83° 41' 46" E. 1665.64 feet to an iron bar in the centerline of S. R. 117 projected; thence with said centerline S. 6° 58' 30" E. 670.64 feet to the place of beginning.

Containing 25.87 acres more or less.

Reference is hereby made to a plat of this survey on file with the Logan County Engineer.

6379 2D

INDEXED ON MAP

LEGEND:

- = P.K. NAIL SET
- △ = STONE FOUND
- = 5/8" IRON BAR SET

URSULA GILLEN  
22.25 AC.

DONALD RITTER  
41.30 AC.

N. 5° 04' 38" W. 673.56'

N. 83° 41' 46" E.

1665.64'

25.87 AC.

S. 83° 36' W.

1687.9'

HAZEL WHITAKER  
25.70 AC.

PARR SURVEY  
V.M.S. 12320  
M<sup>c</sup>ARTHUR TOWNSHIP  
LOGAN COUNTY, OHIO  
FEBRUARY, 1980  
SCALE: 1" = 200'

6379 2P

INDEXED ON MAP



LESLIE H. GEESLIN  
RUSHSVLVANIA, OHIO

RIGHT OF WAY

RES.

670.64'

S. 6° 58' 30" E.

S. R. 117

STA. 261+17.95