

WILLIAM SHIELDS DESCRIPTION
March, 1961

Being situated in McArthur Township, Logan County, Ohio,
and being a part of V.M.S. 9932.

Beginning at the intersection of Bellefontaine Street
and County Highway #111 in Northwood. Thence with the center
of County Highway #111 N 85°-44'E 1431.2 feet to an iron,
said iron is the place of beginning for this description.

Thence continuing with the center of County Highway #111
N 85°-44'E 250.0 feet to an iron in the northwest corner of
William Shields' 47.10 acre tract.

Thence with the west line of William Shields' 47.10
acre tract S 6°-42'E 290.0 feet to an iron.

Thence S 85°-44'W 250.0 feet to an iron.

Thence N 6°-42'W 290.0 feet to the place of beginning.

Containing 1.67 acres more or less.

Owen K. Shirk
Surveyor 4271

10-1

6501-

RECORDED IN MAP

WILLIAM SHIELDS DESCRIPTION #2
(March 1961)

Being situated in McArthur Township, Logan County, Ohio,
and being a part of V.M.S. #9932.

Beginning at the intersection of State Route #638 and
County Highway #113. Thence with the center of State Route
#638 N 7°-03'W 1987.0 feet.

Thence N81°-09'E 436.0 feet to a corner post.

Thence S81°-13'E 1282.0 feet to an iron in the west line
of John L. Rutherford's 36.20 acre tract.

Thence with the west line of said Rutherford's 36.20
tract S 6°-42'E 1690.0 feet to an iron in the center of
County Highway #113.

Thence with the center of County Highway #113 S84°-20'W
1660.0 feet to the place of beginning.

Containing 72.50 acre more or less.

Owen K. Shirk
Surveyor #4271

1D-2

6501

WILLIAM SHIELDS DESCRIPTION #3
(March 1961)

Being situated in McArthur Township, Logan County, Ohio,
and being a part of V.M.S. #9932.

Beginning at the intersection of Bellefontaine Street and
County Highway #111 in Northwood.

Thence with the center of County Highway #111 N85°-44'E
634.5 feet to the place of beginning for this description.

Thence continuing with the center of County Highway #111
N85°-44'E 796.7 feet to an iron.

Thence S 6°-42'E 290.0 feet to an iron.

Thence N85°-44'E 250.0 feet to an iron in the west line
of William Shields' 47.10 acre tract.

Thence with the west line of William Shields' 47.10 acre
tract S 6°-42'E 1355.0 feet to an iron.

Thence N81°-13'W 1282.0 feet to a corner post.

Thence S81°-09'W 436.0 feet to a point in the extension
of the road (C.H.#113 or Bellefontaine Street) that leads north
through Northwood.

Thence with said C.H. #113 N 7°-03'W 1058.5 feet.

Thence N85°-44'E 634.5 feet.

Thence N 7°-03'W 330.5 feet to the place of beginning.

Containing 48.73 acres more or less.

Owen K. Shirk
Surveyor #4271

1D-3

0501

WILLIAM SHIELDS DESCRIPTION #4
(March 1961)

Being situated in McArthur Township, Logan County, Ohio,
and being a part of V.M.S. #9932.

Beginning at the intersection of State Route #638 and
County Highway #113. Thence with the center of County Highway
#113 $N84^{\circ}-20'E$ 1650.0 feet to the northwest corner of Jas. M.
Rutherford's 17.90 acre tract.

Thence with the west line of Rutherford's 17.90 acre tract
 $S 5^{\circ}-10'E$ 545.3 feet to a corner post at the northeast corner
of M.Coe Laughlin's 75.04 acre tract.

Thence with the north line of Laughlin's 75.04 acre tract
 $S84^{\circ}-20'W$ 1509.0 feet to a point in the center of State Route
#638.

Thence with the center of State Route #638 $N19^{\circ}-41'W$ 561.7
feet to the place of beginning.

Containing 19.74 acres more or less.

Owen K. Shirk
Surveyor #4271

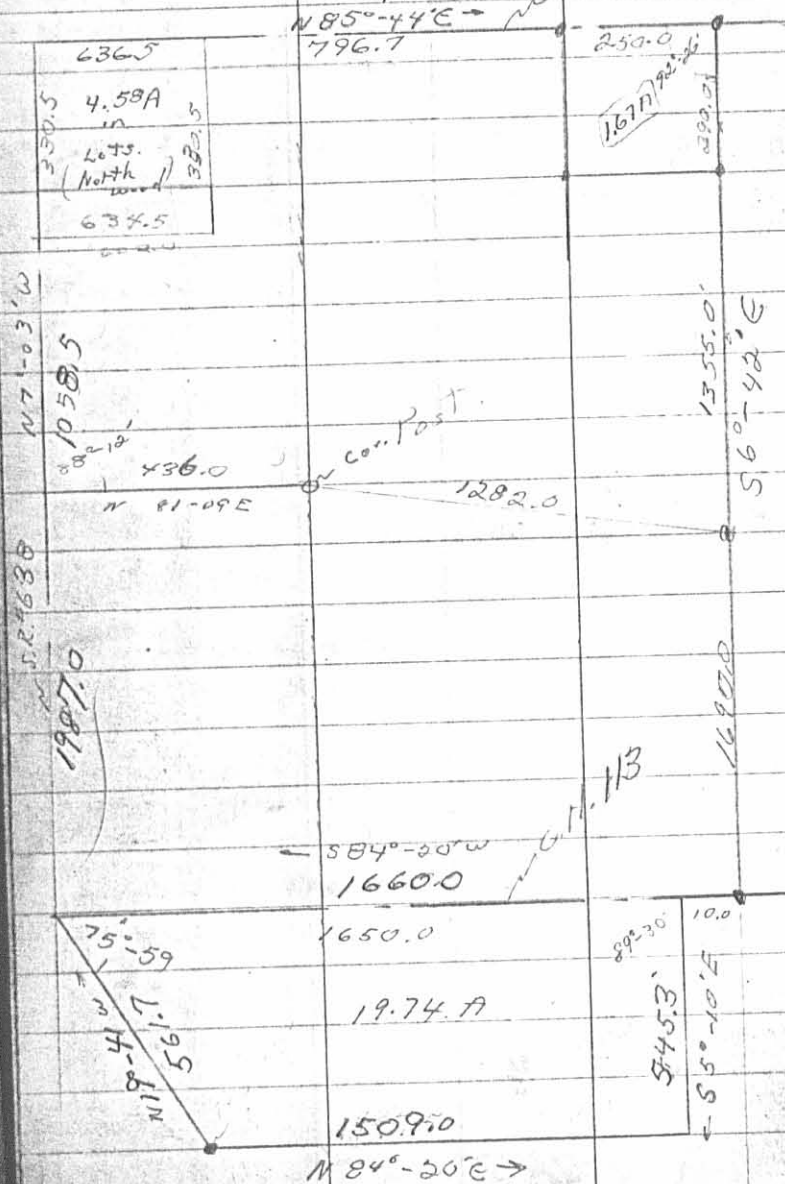
1D-4

(6501)

Mar, 61

40

Wm Shields
M^cArthur Twp
V.M.S. 9932



6501

INDEXED ON MAP

1690
13.55
270
3335

796.7
634.5
65
1688.2

~~101.23~~
~~19.74~~
~~143.97~~

122.90
19.74
142.64

3774
3040
1987
1053

88°-12'
7 03 .87-30
84-20
5 10 E