

REC'D 12-7-07 smy die

Lee Surveying and Mapping Co., Inc.

Land Surveys • Topography • Subdivisions • Construction Layout

117 N. Madriver St.
Bellefontaine OH 43311



Phone: (937) 593-7335
Fax: (937) 593-7444

LAPAMA'A LLC 15.00 FEET WIDE CURTAIN DRAIN EASEMENT

Lying in Virginia Military Survey 10122, McArthur Township, Logan County, Ohio.

Being a 15.00 feet wide curtain drain easement over the Lapama'a LLC 475.405 acre tract as deeded and described in Official Record 421, Page 449 of the Logan County Records of Deeds and being more particularly described as follows:

Commencing at a railroad spike found at the intersection of the center-line of County Highway 37 (60 feet wide) and the west line of Virginia Military Survey 12168.

THENCE, with the center-line of County Highway 37 the following two courses:

S 65°01'-06"E, a distance of 65.09 feet to a MAG nail found.

With a curve to the left, having a central angle of 5°28'-55", a radius of 1432.30 feet, an arc length of 137.04 feet, a chord bearing S 67°-54'-49"E at a distance of 136.99 feet to a MAG nail set.

THENCE, S 19°02'-17"E, a distance of 147.71 feet to a 5/8 inch iron rod set, passing a 5/8 inch iron rod set at 38.03 feet.

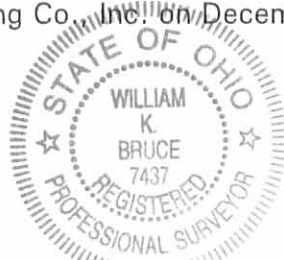
THENCE, S 12°45'-14"E, a distance of 100.58 feet to a 5/8 inch iron rod set at the TRUE POINT OF BEGINNING..

THENCE, with the center-line of this curtain drain easement, the following two courses:

N 83°24'-50"E, a distance of 3790.11 feet to a 5/8 inch iron rod set.

S 7°23'-29"E, a distance of 2342.32 feet to the terminus of this easement.

The basis for bearings is the center-line of County Highway 37, being N 83°24'-50"E, and all other bearings are from angles and distances measured in a field survey by Lee Surveying and Mapping Co., Inc. on December 6, 2007.

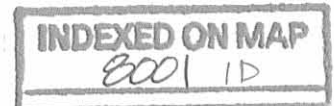


ORIGINAL STAMP IN GREEN

Description prepared by:

A handwritten signature in black ink that reads "William K. Bruce".

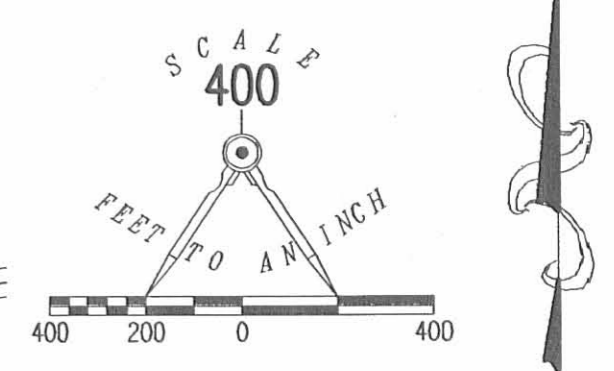
William K. Bruce
Professional Surveyor 7437
December 6, 2007



L-1768127

REC'D 12-7-07 SMY ak

| CURVE | DELTA ANGLE | RADIUS | ARC LENGTH | TANGENT | CHORD LENGTH | CHORD BEARING |
|-------|-------------|----------|------------|---------|--------------|---------------|
| C1 | 05°28'55" | 1432.30' | 137.04' | 68.57' | 136.99' | S 67°54'49" E |



- LEGEND
- 5/8 INCH IRON ROD SET
 - 5/8 INCH IRON ROD FOUND
 - ⊙ MAG NAIL SET
 - ⊘ MAG NAIL FOUND
 - SOUTHEAST CORNER OF 6 INCH CONCRETE POST
 - ⊗ RAILROAD SPIKE FOUND

LAPAMA'A LLC.
475.405 ACRE TRACT
O.R. 421, PG. 449

LAPAMA'A LLC.
475.405 ACRE TRACT
O.R. 421, PG. 449

LAPAMA'A LLC.
475.405 ACRE TRACT
O.R. 421, PG. 449

SECTION 20
McPHERSON'S SECTION,
TOWN 7, RANGE 9

**SURVEY OF A 15.00 FEET WIDE
CURTAIN DRAIN EASEMENT OVER THE
LAPAMA'A LLC.
475.405 ACRE TRACT
OFFICIAL RECORD 421, PAGE 449
VIRGINIA MILITARY SURVEY 10122
McARTHUR TOWNSHIP
LOGAN COUNTY, OHIO**

SURVEYED BY:

William K. Bruce

WILLIAM K. BRUCE
PROFESSIONAL SURVEYOR 7437
DECEMBER 6, 2007



COPYRIGHT 2007 BY:
LEE SURVEYING & MAPPING CO., INC.
117 North Madriver Street
BELLEFONTAINE, OHIO 43311
(937) 593-7335
surveys@lsminc.us
KSS D1207 1768127 L-1768-3

PHYLIS B. YEASEL, TRUSTEE
160.00 ACRE TRACT
O.R. 433, PG. 45
TRACT VI

2 WORKING DAYS
BEFORE YOU DIG
CALL TOLL FREE **800-362-2764**
OHIO UTILITIES PROTECTION SERVICE.

INDEXED ON MAP
8001 IP

REV'D 11-8-07 SWM/ML

Lee Surveying and Mapping Co., Inc.

Land Surveys • Topography • Subdivisions • Construction Layout

117 N. Madriver St.
Bellefontaine OH 43311



Phone: (937) 593-7335
Fax: (937) 593-7444

LAPAMA'A LLC 53.000 ACRES

Lying in Virginia Military Surveys 12168 and 10122, McArthur Township, Logan County, Ohio.

Being out of the Lapama'a LLC 475.405 acre tract as deeded and described in Official Record 421, Page 449 of the Logan County Records of Deeds and being more particularly described as follows:

Commencing at a railroad spike found at the intersection of the center-line of County Highway 37 (60 feet wide) and the west line of Virginia Military Survey 12168.

THENCE, with the center-line of County Highway 37 the following two courses:

S 65°01'-06"E, a distance of 65.09 feet to a MAG nail found.

With a curve to the left, having a central angle of 5°28'-55", a radius of 1432.30 feet, an arc length of 137.04 feet, a chord bearing S 67°-54'-49"E at a distance of 136.99 feet to a MAG nail set AT THE TRUE POINT OF BEGINNING.

THENCE, with the center-line of County Highway 37, with a curve to the left, having a central angle of 25°56'-07", a radius of 1432.30 feet, an arc length of 648.34 feet, a chord bearing S 83°37'-20"E, a distance of 642.82 feet to a MAG nail found.

THENCE, with the center-line of County Highway 37 and the south line of Virginia Military Survey 12168, N 83°24'-50"E, a distance of 490.74 feet to a MAG nail set.

THENCE, S 6°48'-15"E, a distance of 2445.51 feet to a 5/8 inch iron rod set, passing a 5/8 inch iron rod set at 30.00.

THENCE, with an east line of the Phyllis B. Yeasel, Trustee 160.00 acre tract extended and said east line (O.R. 433, Pg. 45 Tract VI), S 82°-13'-09"W, a distance of 705.15 feet to the southeast corner of a 6 inch concrete post found, passing a 5/8 inch iron rod found at 330.93 feet.

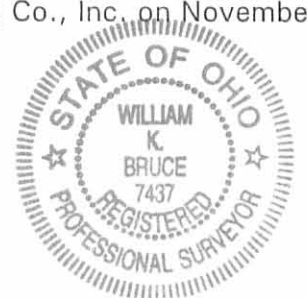
THENCE, with the east line of the said 160.00 acre tract and the east line of the McPherson's Section, N 19°02'-17"W, a distance of 1124.20 feet to a 5/8 inch iron rod found.

THENCE, N 12°45'-14"W, a distance of 1370.39 feet to a 5/8 inch iron rod set.

THENCE, N 19°02'-17"W, a distance of 147.71 feet to the point of beginning, passing a 5/8 inch iron rod set at 109.68 feet.

Containing 53.000 acres of which 0.781 acre is within the highway right-of-way. 0.624 acre is within Virginia Military Survey 12168 and 52.376 acres is within Virginia Military Survey 10122.

The basis for bearings is the center-line of County Highway 37, being N 83°24'-50"E, and all other bearings are from angles and distances measured in a field survey by Lee Surveying and Mapping Co., Inc. on November 5, 2007.



ORIGINAL STAMP IN GREEN

Description prepared by:

William K. Bruce

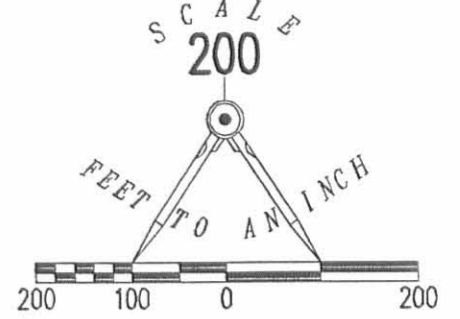
William K. Bruce
Professional Surveyor 7437
November 6, 2007



L-1768107

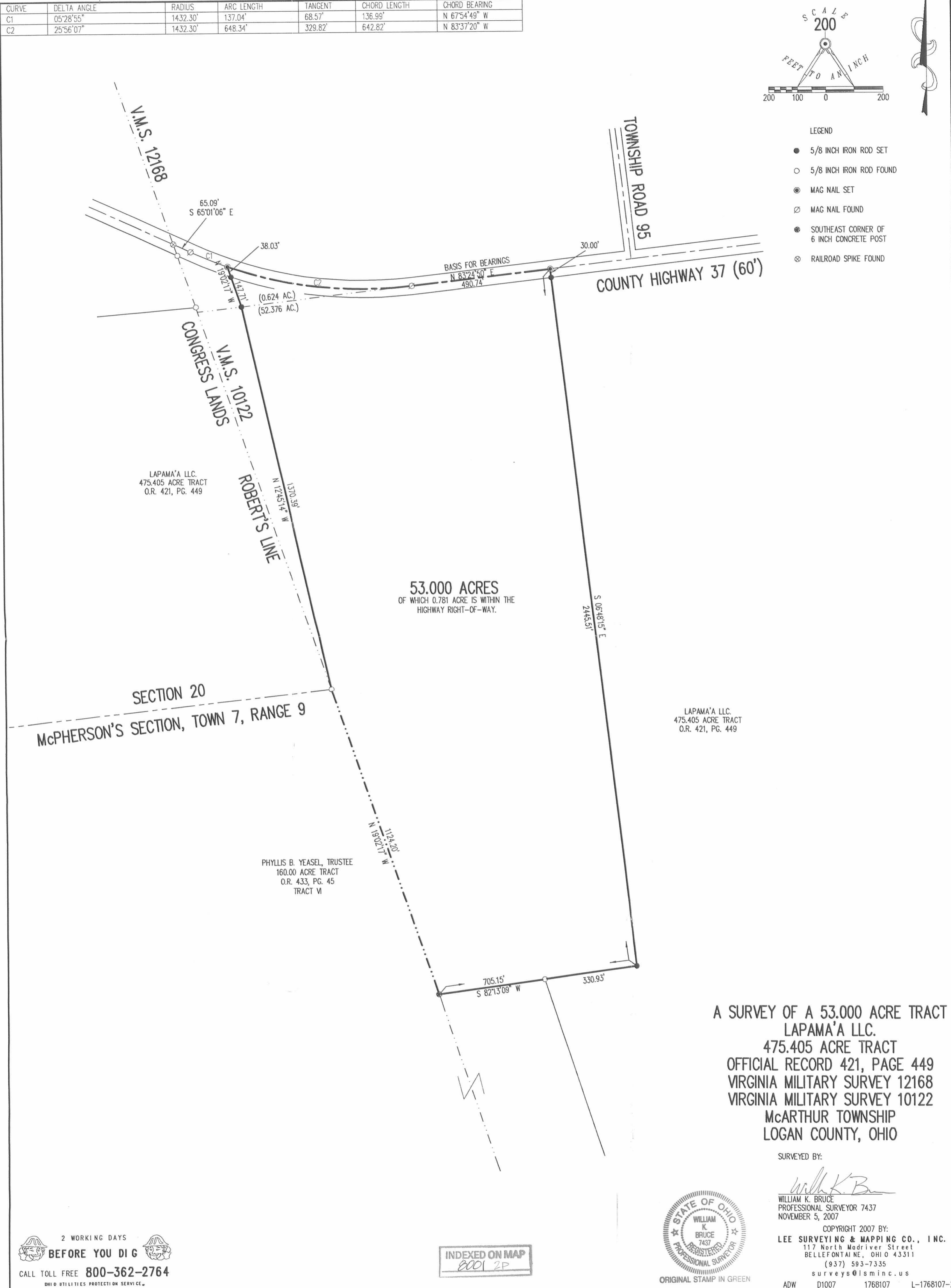
REC'D 11-8-07 SMY/OLC

| CURVE | DELTA ANGLE | RADIUS | ARC LENGTH | TANGENT | CHORD LENGTH | CHORD BEARING |
|-------|-------------|----------|------------|---------|--------------|---------------|
| C1 | 05°28'55" | 1432.30' | 137.04' | 68.57' | 136.99' | N 67°54'49" W |
| C2 | 25°56'07" | 1432.30' | 648.34' | 329.82' | 642.82' | N 83°37'20" W |



LEGEND

- 5/8 INCH IRON ROD SET
- 5/8 INCH IRON ROD FOUND
- ⊙ MAG NAIL SET
- ⊗ MAG NAIL FOUND
- ⊛ SOUTHEAST CORNER OF 6 INCH CONCRETE POST
- ⊙ RAILROAD SPIKE FOUND



A SURVEY OF A 53.000 ACRE TRACT
LAPAMA'A LLC.
475.405 ACRE TRACT
OFFICIAL RECORD 421, PAGE 449
VIRGINIA MILITARY SURVEY 12168
VIRGINIA MILITARY SURVEY 10122
McARTHUR TOWNSHIP
LOGAN COUNTY, OHIO

SURVEYED BY:

William K. Bruce
WILLIAM K. BRUCE
PROFESSIONAL SURVEYOR 7437
NOVEMBER 5, 2007

COPYRIGHT 2007 BY:
LEE SURVEYING & MAPPING CO., INC.
117 North Madriver Street
BELLEFONTAINE, OHIO 43311
(937) 593-7335
surveys@lsmc.us



ORIGINAL STAMP IN GREEN

INDEXED ON MAP
8001 2P

2 WORKING DAYS
BEFORE YOU DIG
CALL TOLL FREE **800-362-2764**
OHIO UTILITIES PROTECTION SERVICE

ADW D1007 1768107 L-1768107-2

Recd 8-5-99 06/9/17



Lee Surveying and Mapping Co., Inc.



Land Surveys • Topography • Subdivisions • Construction Layout

117 N. Madriver Street
Bellefontaine OH 43311

Phone: (937) 593-7335
Fax: (937) 593-7444

ROPP 475.405 ACRES

Lying in Virginia Military Survey 12168 and Virginia Military Survey 10122, Sections 19 and 20, Town 7, Range 9, McArthur Township, Logan County, Ohio.

Being the remainder of the Donald Ropp and Carolyn Ropp original 150 acre tract, Tract I, the original 87.67 acre tract, Tract II, Parcel I, the original 23.858 acre tract, Tract II, Parcel II, Part I, the original 41.667 acre tract, Tract II, Parcel II, Part II, the original 92.41 acre tract, Tract V, the original 69.77 acre tract, Tract VII, Parcel II, and all of the original 1.17 acre tract, Tract III, the original 0.72 acre tract Tract V, and the original 24.00 acre tract, Tract VII, Parcel I as deeded and described in Official Record 78, Page 357 of the Logan County Records of Deeds and being more particularly described as follows:

Beginning at a stone found in a monument box at the intersection of the north line of Virginia Military Survey 10122, and the center-lines of County Highway 37 and Township Road 31.

THENCE, with the north lines of Virginia Military Survey 10122 and the D. Wayne Ropp 1.586 acre tract (O.R. 398, Pg. 745), and the center-line of County Highway 37 (60 feet wide), S 84°-06'-23" W, a distance of 300.14 feet to a Mag nail found at the TRUE POINT OF BEGINNING.

THENCE, with the west lines of the said 1.586 acre tract and D. Wayne Ropp 1.377 acre tract (O.R. 415, Pg. 254), and the Donald Ropp 1.377 acre tract (O.R. 347, Pg. 938), and 1.377 acre tract (O.R. 347, Pg. 940), and 1.377 acre tract (O.R. 394, Pg. 30), and 1.377 acre tract (O.R. 394, Pg. 32), and 1.377 acre tract (O.R. 394, Pg. 34), and 1.377 acre tract (O.R. 394, Pg. 36), S 5°-45'-00" E, a distance of 1629.70 feet to a 1/2 inch iron rod found, passing a 5/8 inch iron rod found at 30.00 feet.

THENCE, with the south line of the said 1.377 acre tract (O.R. 394, Pg. 36), N 84°-15'-00" E, a distance of 28.07 feet to a 1/2 inch iron rod found.

THENCE, with the west lines of the John C. Parker 2.00 acre tract (O.R. 158, Pg. 622), and 3.00 acre tract (O.R. 108, Pg. 83), S 5°-45'-00" E, a distance of 802.11 feet to a 1/2 inch iron rod found.

THENCE, with the south line of the said 3.00 acre tract, N 83°-48'-57" E, a distance of 271.95 feet to a railroad spike found, passing a 1/2 inch iron rod found at 251.93 feet.

THENCE, with the center-line of Township Road 31 (40 feet wide), S 5°-45'-18" E, a distance of 1447.93 feet to a railroad spike found.

THENCE, with the north line of the Peggy S. Bodi 1.00 acre tract (O.R. 118, Pg. 237), S 84°-13'-33" W, a distance of 260.06 feet to a 1/2 inch iron rod found, passing a 1/2 inch iron rod found at 20.02 feet.

THENCE, with the west lines of the said 1.00 acre tract, and the Judy A. Osborn 1.00 acre tract (O.R. 118, Pg. 310), and the Dale R. Harshbarger 1.503 acre tract (O.R. 82, Pg. 463) S 5°-46'-27" E, a distance of 586.94 feet to a 1/2 inch iron rod found.

THENCE, with the lines of the Black Creek Subdivision (Plat Cabinet A, Slide 731) the following two courses:

S 83°-31'-15" W, a distance of 1616.52 feet to a 5/8 inch iron rod found.

S 6°-28'-45" E, a distance of 285.39 feet to a railroad spike found, passing a 5/8 inch iron rod set at 260.39 feet.

THENCE, with the lines of the Phyllis B. Yeasel original 162.93 acre tract (O.R. 207, Pg. 215), the following 3 courses:

S 83°-31'-15" W, a distance of 1430.69 feet to a 5/8 inch iron rod set, passing a 5/8 inch iron rod set at 25.00 feet.

N 18°-35'-27" W, a distance of 2357.24 feet to a 5/8 inch iron rod set.

S 82°-13'-09" W, a distance of 374.22 feet to a point on the southeast corner of a 6 inch concrete post found on the Roberts Line, the west line of Virginia Military Survey 10122, and the east Line of Section 20.

THENCE, with Roberts Line and the east line of the said original 162.93 acre tract, N 19°-02'-17" W, a distance of 1124.20 feet to 5/8 inch iron rod set.

INDEXED ON MAP
80013D-1



Lee Surveying and Mapping Co., Inc.



Land Surveys • Topography • Subdivisions • Construction Layout

117 N. Madriver Street
Bellefontaine OH 43311

Phone: (937) 593-7335
Fax: (937) 593-7444

THENCE, with the north lines of McPherson's Section, Town 7, Range 9 and the said original 162.93 acre tract and the Robert C. Reid original 480.00 acre tract (Vol. 388, Pg. 99, Parcel I), S 83°-43'-57" W, a distance of 2166.69 feet to a 5/8 inch iron rod found.

THENCE, with the east line of the Brian Knief 86.36 acre tract (O.R. 407, Pg. 775, Tract I), N 0°-35'-56" E, a distance of 1571.26 feet to a 5/8 inch iron rod found.

THENCE, with the lines of the Herbert V. Levan original 13.395 acre tract (O.R. 65, Pg. 694) the following two courses:

N 89°-57'-19" E, a distance of 1676.32 feet to a 5/8 inch iron rod set.

N 19°-02'-17" W, a distance of 231.94 feet to a railroad spike found, passing a 5/8 inch iron rod set at 190.09 feet.

THENCE, with the center-line of County Highway 37 the following 2 courses:

S 65°-01'06" E, a distance of 65.09 feet to a MAG nail set.

With a curve to the left having a central angle of 31°-24'-57", a radius of 1432.38 feet, an arc length of 785.39 feet, and a chord being S 80°-52'-46" E, a distance of 775.59 feet to a MAG nail set.

THENCE, with the north line of Virginia Military Survey 10122, and the center-line of County Highway 37 the following 2 courses:

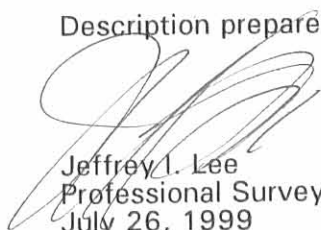
N 83°-24'-50" E, a distance of 2612.41 feet to a MAG nail found.

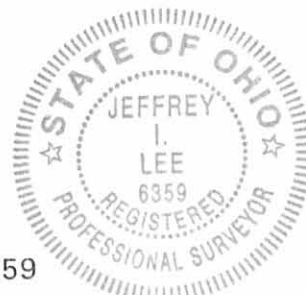
N 84°-06'-23" E, a distance of 1119.73 feet to the point of beginning.

Containing 475.405 acres of which 1.149 acres are in Virginia Military Survey 12168, 409.746 acres are in Virginia Military Survey 10122 with 3.163 acres in the highway rights-of-way, 23.833 acres in Section 19, and 40.677 acres in Section 20.

The basis for bearings is the north line of Virginia Military Survey 10122 west of the intersection of center-lines of County Highway 37 and Township Road 31 being S 84°-06'-23" W, and all other bearings are from angles and distances measured in a field survey by Lee Surveying and Mapping Co., Inc. on July 23, 1999.

Description prepared by:

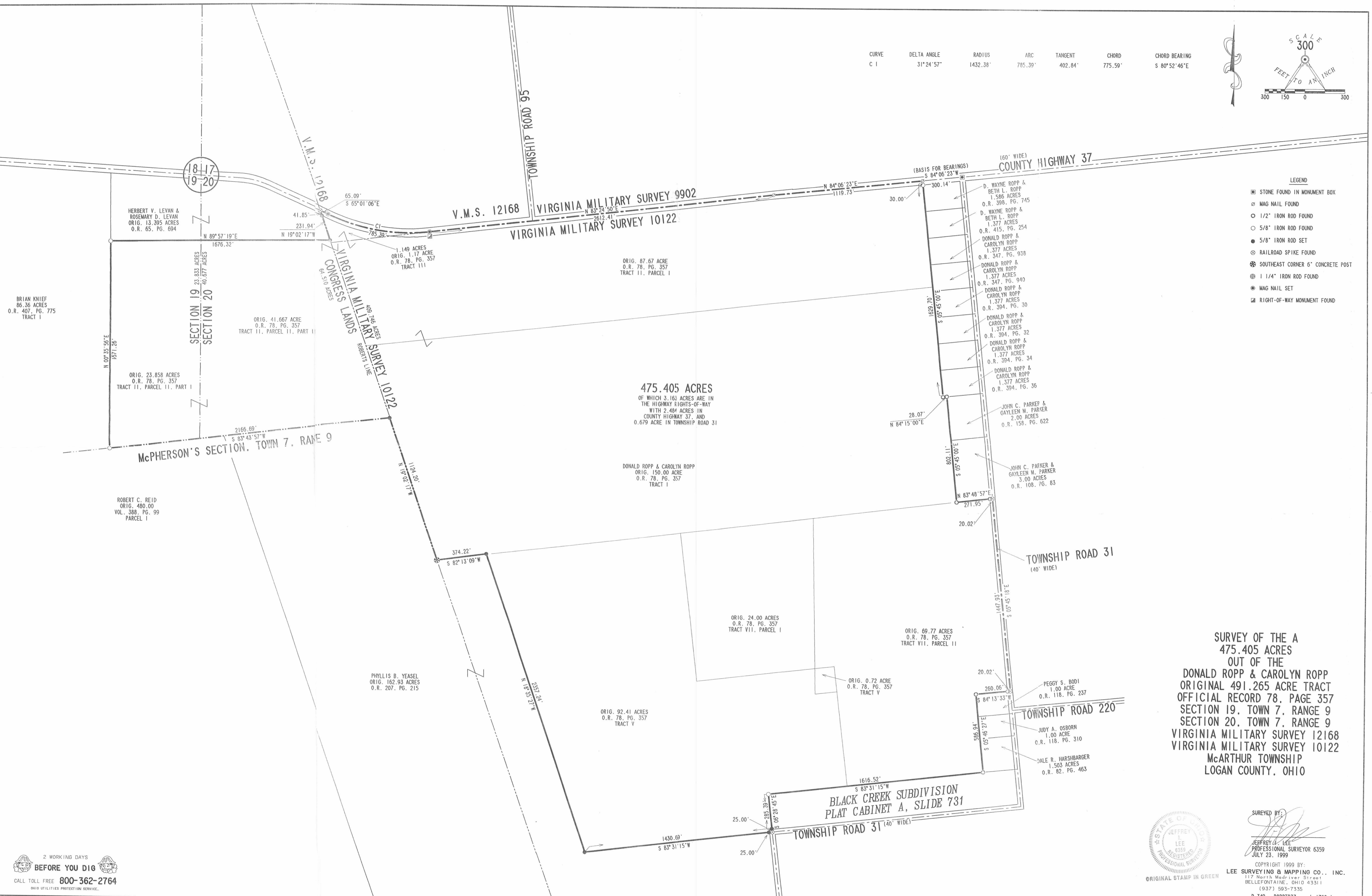
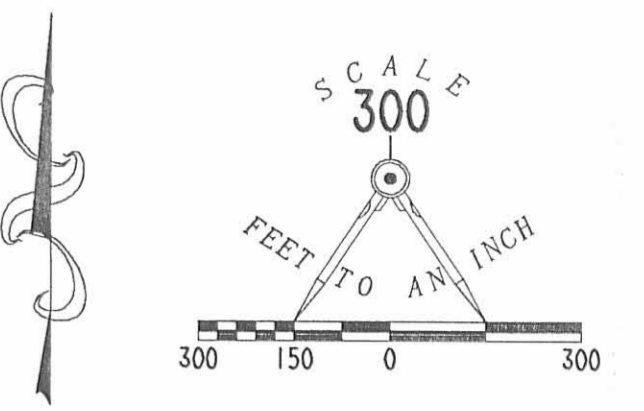

Jeffrey I. Lee
Professional Surveyor 6359
July 26, 1999



ORIGINAL STAMP IN GREEN 1-1768

INDEXED ON MAP
8001 3D-2

| CURVE | DELTA ANGLE | RADIUS | ARC | TANGENT | CHORD | CHORD BEARING |
|-------|-------------|----------|---------|---------|---------|---------------|
| C 1 | 31°24'57" | 1432.38' | 785.39' | 402.84' | 775.59' | S 80°52'46"E |



- LEGEND**
- ⊗ STONE FOUND IN MONUMENT BOX
 - ⊗ MAG NAIL FOUND
 - 1/2" IRON ROD FOUND
 - 5/8" IRON ROD FOUND
 - 5/8" IRON ROD SET
 - ⊗ RAILROAD SPIKE FOUND
 - ⊗ SOUTHEAST CORNER 6" CONCRETE POST
 - ⊗ 1 1/4" IRON ROD FOUND
 - ⊗ MAG NAIL SET
 - ⊗ RIGHT-OF-WAY MONUMENT FOUND

**SURVEY OF THE A
475.405 ACRES
OUT OF THE
DONALD ROPP & CAROLYN ROPP
ORIGINAL 491.265 ACRE TRACT
OFFICIAL RECORD 78, PAGE 357
SECTION 19, TOWN 7, RANGE 9
SECTION 20, TOWN 7, RANGE 9
VIRGINIA MILITARY SURVEY 12168
VIRGINIA MILITARY SURVEY 10122
McARTHUR TOWNSHIP
LOGAN COUNTY, OHIO**



SUREYED BY:
Jeffrey A. Lee
JEFFREY A. LEE
PROFESSIONAL SURVEYOR 6359
JULY 23, 1999

COPYRIGHT 1999 BY:
LEE SURVEYING & MAPPING CO., INC.
117 North Madison Street
BELLEFONTAINE, OHIO 43311
(937) 593-7335
D-349 ROPTR37 L-1768-1

2 WORKING DAYS
BEFORE YOU DIG
CALL TOLL FREE 800-362-2764
OHIO UTILITIES PROTECTION SERVICE.

8001 3P

REV'D 10-7-05 SWM OK

Lee Surveying and Mapping Co., Inc.

Land Surveys • Topography • Subdivisions • Construction Layout

117 N. Madriver St.
Bellefontaine OH 43311



Phone: (937) 593-7335
Fax: (937) 593-7444

LAPAMA'A LLC 0.689 ACRE TRACT A

Lying in Virginia Military Surveys 10122, 10248 and 10249, McArthur Township, Logan County, Ohio

Being part of the Lapama'a LLC 1.377 acre tract as deeded and described in Official Record 421, Page 449 Exhibit A1, of the Logan County Records of Deeds and being more particularly described as follows:

Beginning at a stone found inside a monument box at the intersection of center-lines of County Highway 37 (60 feet wide) and Township Road 31 (40 feet wide).

THENCE, with the center-line of Township Road 31, S 5°-45'-00"E, a distance of 830.66 feet to a 5/8 inch iron rod found at THE TRUE POINT OF BEGINNING.

THENCE, with the center-line of Township Road 31, S 5°-45'-00"E, a distance of 100.00 feet to a 5/8 inch iron rod set.

THENCE, S 84°-15'-00"W, a distance of 300.00 feet to a 5/8 inch iron rod set, passing a 5/8 inch iron rod set at 20.00 feet.

THENCE, with the east line of the remainder of the Lapama'a LLC original 475.405 acre tract (O.R. 421, Pg. 449 Exhibit A), N 5°-45'-00"W, a distance of 100.00 feet to a 5/8 inch iron rod found.

THENCE, with the south line of the Eva L. Kennedy 1.377 acre tract (O.R. 477, Pg. 221), N 84°-15'-00"E, a distance of 300.00 feet to the point of beginning, passing a 5/8 inch iron rod found at 280.00 feet.

Containing 0.689 acre of which 0.046 acre is within the highway right-of-way.

The basis for bearings is the center-line of Township Road 31 being, S 5°-45'-00"E, and all other bearings are from angles and distances measured in a field survey by Lee Surveying and Mapping Co., Inc. on October 5, 2005.

Description prepared by:



ORIGINAL STAMP IN GREEN

[Signature]
Jeffrey I. Lee
Professional Surveyor 6359
October 5, 2005

L-1768105



REC'D 10-7-05 SUM OK

Lee Surveying and Mapping Co., Inc.

Land Surveys • Topography • Subdivisions • Construction Layout

117 N. Madriver St.
Bellefontaine OH 43311



Phone: (937) 593-7335
Fax: (937) 593-7444

LAPAMA'A LLC 0.689 ACRE TRACT B

Lying in Virginia Military Surveys 10122, 10248 and 10249, McArthur Township, Logan County, Ohio

Being part of the Lapama'a LLC 1.377 acre tract as deeded and described in Official Record 421, Page 449 Exhibit A1, of the Logan County Records of Deeds and being more particularly described as follows:

Beginning at a stone found inside a monument box at the intersection of center-lines of County Highway 37 (60 feet wide) and Township Road 31 (40 feet wide).

THENCE, with the center-line of Township Road 31, S 5°-45'-00"E, a distance of 930.66 feet to a 5/8 inch iron rod set at THE TRUE POINT OF BEGINNING.

THENCE, with the center-line of Township Road 31, S 5°-45'-00"E, a distance of 100.00 feet to a 5/8 inch iron rod found.

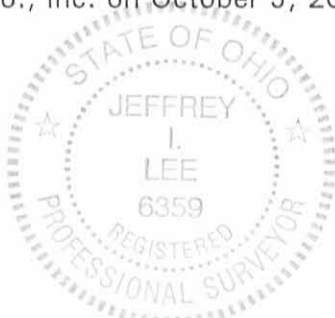
THENCE, with the north line of the Michael P. True and Robin C. True 1.377 acre tract (O.R. 648, Pg. 471), S 84°-15'-00"W, a distance of 300.00 feet to a 5/8 inch iron rod found, passing a MAG nail found at 20.00 feet.

THENCE, with the east line of the remainder of the Lapama'a LLC original 475.405 acre tract (O.R. 421, Pg. 449 Exhibit A), N 5°-45'-00"W, a distance of 100.00 feet to a 5/8 inch iron rod set.

THENCE, N 84°-15'-00"E, a distance of 300.00 feet to the point of beginning, passing a 5/8 inch iron rod set at 280.00 feet.

Containing 0.689 acre of which 0.046 acre is within the highway right-of-way.

The basis for bearings is the center-line of Township Road 31 being, S 5°-45'-00"E, and all other bearings are from angles and distances measured in a field survey by Lee Surveying and Mapping Co., Inc. on October 5, 2005.



ORIGINAL STAMP IN GREEN

Description prepared by:

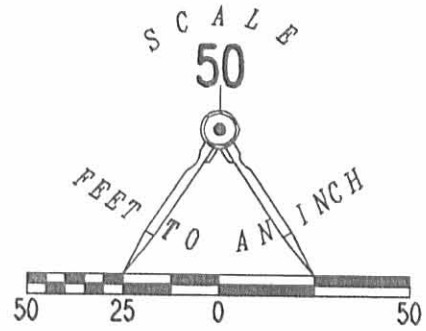
Jeffrey I. Lee
Professional Surveyor 6359
October 5, 2005

L-1768105



LEGEND

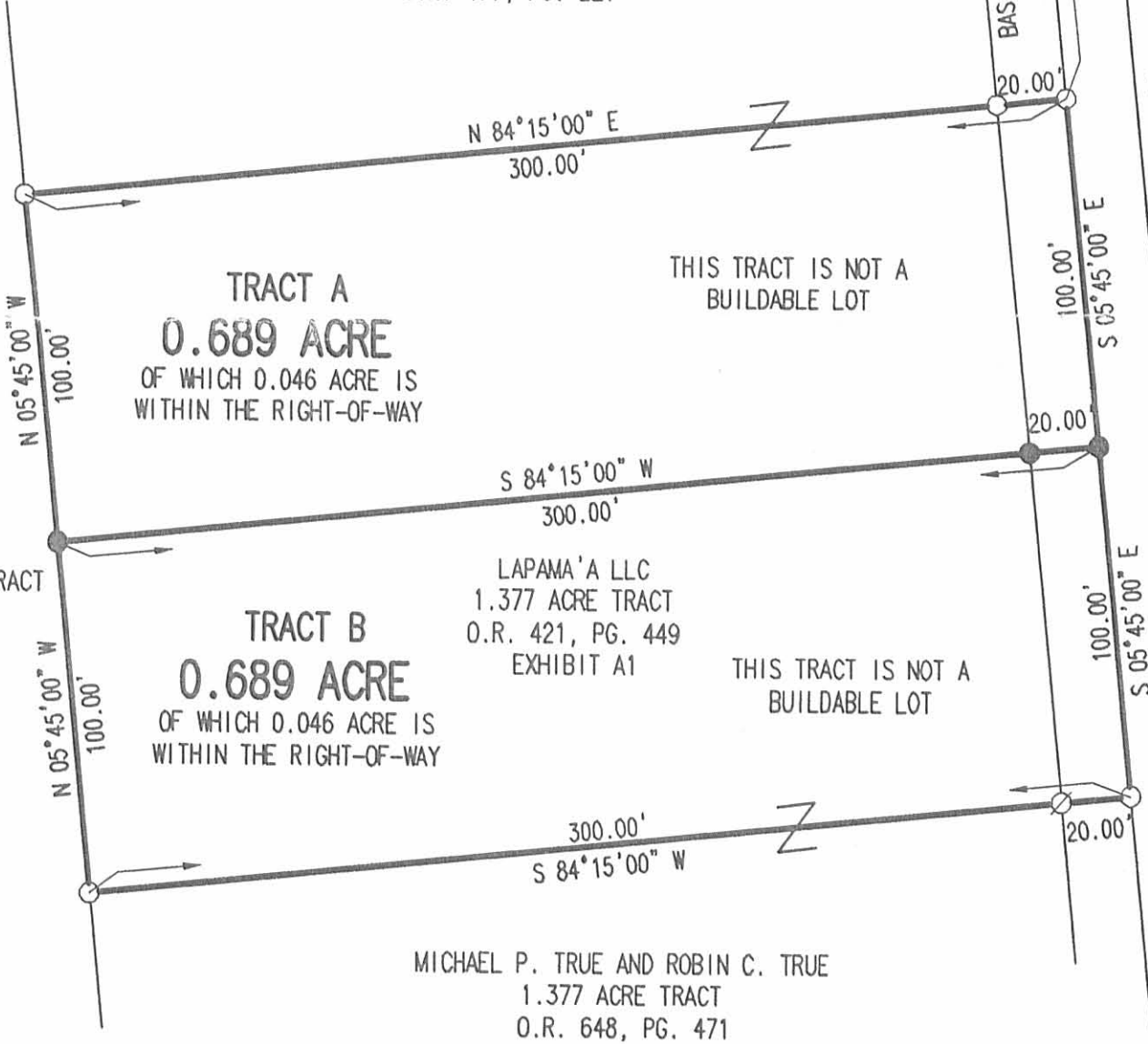
- STONE FOUND INSIDE MONUMENT BOX
- 5/8 INCH IRON ROD SET
- MAG NAIL FOUND
- 5/8 INCH IRON ROD FOUND



COUNTY HIGHWAY 37 (60')

EVA L. KENNEDY
1.377 ACRE TRACT
O.R. 477, PG. 221

BASIS FOR BEARINGS
S 05°45'00" E
830.66'



A SURVEY OF TWO TRACTS OUT OF THE
LAPAMA 'A LLC
1.377 ACRE TRACT
OFFICIAL RECORD 421, PAGE 449 EXHIBIT A1
VIRGINIA MILITARY SURVEYS
10122, 10248 AND 10249
McARTHUR TOWNSHIP
LOGAN COUNTY, OHIO

SURVEYED BY:



Jeffrey I. Lee
JEFFREY I. LEE
PROFESSIONAL SURVEYOR 6359
OCTOBER 5, 2005

COPYRIGHT 2005 BY:

LEE SURVEYING & MAPPING CO., INC.
117 North Madriver Street
BELLEFONTAINE, OHIO 43311
(937) 593-7335

2 WORKING DAYS
BEFORE YOU DIG
CALL TOLL FREE **800-362-2764**
OHIO UTILITIES PROTECTION SERVICE.

INDEXED ON MAP
8001 4P

ORIGINAL STAMP IN GREEN
ADW

D1005 1768105

L-1768105-3



Lee Surveying and Mapping Co.



Farm Surveys • Lot Surveys • Topography • Subdivisions • Construction Layout

143 EAST COLUMBUS AVENUE
BELLEFONTAINE, OHIO 43311

(513) 593-7335
(513) 593-5780

CLAYTON M. LEE, P.S.
JEFFREY I. LEE, P.S.

DON ROPP (3.00 ACRES)

Lying in V.M.S. 10122-10248-10249, McArthur Township, Logan County, Ohio.

Being out of that 150 acres in the name of Ropp as deeded and described in O.R. 78, Page 357, Tract 1 of the Logan County Records of Deeds and being more particularly described as follows:

Beginning at a railroad spike set on the center-line of Township Road 31, a distance of 1592.6 feet, northerly, with said center-line, from the center-line of Township Road 220.

THENCE, with the south edge of a fence, S 83°-48'-57" W, a distance of 271.91 feet to a ½" iron rod (set).

THENCE, parallel to Township Road 31, N 5°-45' W, a distance of 481.65 feet to a ½" iron rod (set).

THENCE, N 84°-15' E, a distance of 271.90 feet to a ½" iron rod set on the center-line of Township Road 31, a distance of 0.6' ft. east of the east edge of the pavement, passing a ½ inch iron rod set at 251.90 feet.

THENCE, with the said center-line, S 5°-45' E, a distance of 479.59 feet to the point of beginning.

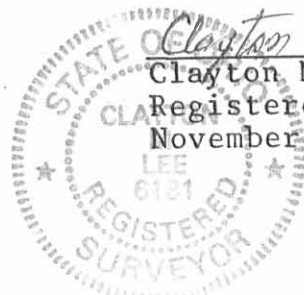
Containing 3.00 acres.

This description prepared from an actual field survey.
Basis for bearings: Center-line of Township Road 31 = S 5°-45' E.

Prepared by:

Clayton M. Lee
Clayton M. Lee

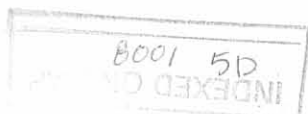
Registered Professional Surveyor No. 6181
November 30, 1989

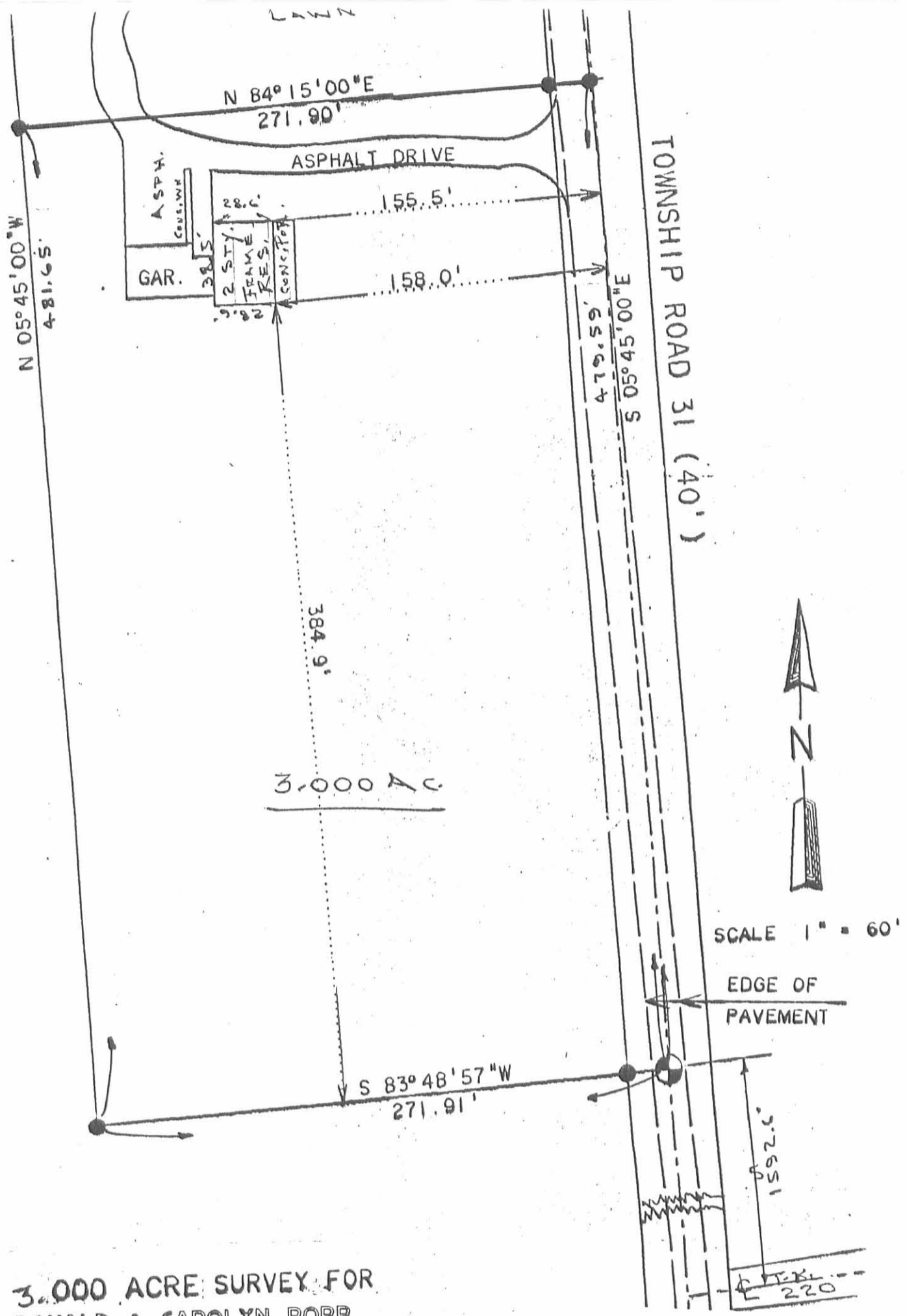


ORIGINAL STAMP IN GREEN



ORIGINAL STAMP IN GREEN





**3.000 ACRE SURVEY FOR
DONALD & CAROLYN ROPP**
(O.R. 78, PAGE 357)
V.M.S. 10122, 10248 & 10249
McARTHUR TOWNSHIP
LOGAN COUNTY, OHIO

LEGEND

- ⊙ RAILROAD SPIKE SET
- ⊕ RAILROAD SPIKE FOUND
- STONE FOUND
- 3/4" SQ. BAR FOUND
- 1/2" I. ROD SET
- 5/8" I. ROD FOUND

I hereby state to Colonial Federal Savings Bank and Chicago Title Company that the foregoing plat was prepared from an actual survey of the premises and that same shows the location of the boundaries all improvements thereon; that the dimensions of the improvements and the locations thereof with respect to the boundaries are correct as shown; that there are no encroachments from nor upon subject premises, except as shown.



Jeffrey L. Lee
Jeffrey L. Lee
Professional Surveyor 6359
February 12, 1990

INDEXED ON MAP
800/5P

ORIGINAL STAMP IN GREEN

L-1768-4

Rec'd 7-28-00 SMJ/ak

Lee Surveying and Mapping Co., Inc.

Land Surveys • Topography • Subdivisions • Construction Layout

117 N. Madriver St.
Bellefontaine OH 43311



Phone: (937) 593-7335
Fax: (937) 593-7444

LAPAMA'A 5.667 ACRES TRACT A

Lying in Virginia Military Survey 10122, McArthur Township, Logan County, Ohio.

Being out of the Lapama'a L.L.C, an Ohio Limited Liability Company, original 475.405 acre tract as deeded and described in Official Record 421, Page 449, Exhibit "A", of the Logan County Records of Deeds and being more particularly described as follows:

Beginning at a stone found in a monument box at the intersection of the center-lines of County Highway 37 and Township Road 31.

THENCE, with the center-line of Township Road 31 (40 feet wide), S 5°-45'-18" E, a distance of 2430.51 feet to a railroad spike found at the TRUE POINT OF BEGINNING.

THENCE, with the center-line of Township Road 31, S 5°-45'-18" E, a distance of 322.17 feet to a railroad spike set.

THENCE, S 84°-14'-42" W, a distance of 776.52 feet to a point in the center-line of Black Ditch, passing 5/8 inch iron rods set at 20.00 feet and at 758.35 feet.

THENCE, with the center-line of Black Ditch, N 13°-37'-57" W, a distance of 62.94 feet to a point, referenced by a 5/8 inch iron rod set N 76°-22'-03" E, a distance of 18.00 feet.

THENCE, continuing with the center-line of Black Ditch, N 0°-27'-22" E, a distance of 255.64 feet to a point.

THENCE, with the south line extended and the south line of the John C. Parker 3.00 acre tract (O.R. 108, Pg. 83), N 83°-48'-57" E, a distance of 757.51 feet to the point of beginning, passing a 5/8 inch iron rod set at 18.00 feet and a 1/2 inch iron rod found at 737.51 feet.

Containing 5.667 acres of which 0.148 acre is in the highway right-of-way.

The basis for bearings is the center-line of Township Road 31, being S 5°-45'-18" E, and all other bearings are from angles and distances measured in a field survey by Lee Surveying and Mapping Co., Inc. on May 9, 2000.

Description prepared by:

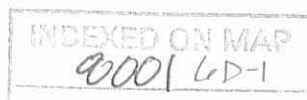
A handwritten signature in black ink, appearing to read 'J. Lee', is written over the typed name and title.

Jeffrey I. Lee
Professional Surveyor 6359
June 2, 2000
Revised: July 14, 2000



ORIGINAL STAMP IN GREEN

L-1768



REC'D 7-28-00 SMJ AK

Lee Surveying and Mapping Co., Inc.

Land Surveys • Topography • Subdivisions • Construction Layout

117 N. Madriver St.
Bellefontaine OH 43311



Phone: (937) 593-7335
Fax: (937) 593-7444

LAPAMA'A 5.000 ACRES TRACT B

Lying in Virginia Military Survey 10122, McArthur Township, Logan County, Ohio.

Being out of the Lapama'a L.L.C, an Ohio Limited Liability Company, original 475.405 acre tract as deeded and described in Official Record 421, Page 449, Exhibit "A", of the Logan County Records of Deeds and being more particularly described as follows:

Beginning at a stone found in a monument box at the intersection of the center-lines of County Highway 37 and Township Road 31.

THENCE, with the center-line of Township Road 31 (40 feet wide), S 5°-45'-18" E, a distance of 2752.68 feet to a railroad spike set at the TRUE POINT OF BEGINNING.

THENCE, with the center-line of Township Road 31, S 5°-45'-18" E, a distance of 287.87 feet to a railroad spike set.

THENCE, S 84°-14'-42" W, a distance of 736.69 feet to a point in the center-line of Black Ditch, passing 5/8 inch iron rods set at 20.00 feet and at 718.52 feet.

THENCE, with the center-line of Black Ditch, N 13°-37'-57" W, a distance of 290.61 feet to a point.

THENCE, N 84°-14'-42" E, a distance of 776.52 feet to the point of beginning, passing 5/8 inch iron rods set at 18.17 feet and at 756.52 feet.

Containing 5.000 acres of which 0.132 acre is in the highway right-of-way.

The basis for bearings is the center-line of Township Road 31, being S 5°-45'-18" E, and all other bearings are from angles and distances measured in a field survey by Lee Surveying and Mapping Co., Inc. on May 9, 2000.

Description prepared by:

A handwritten signature in black ink, appearing to read 'Jeffrey I. Lee', is written over a circular stamp.

Jeffrey I. Lee
Professional Surveyor 6359
June 2, 2000
Revised: July 14, 2000



ORIGINAL STAMP IN GREEN

L-1768



REV'D 7-28-00 SMY OK

2 WORKING DAYS
BEFORE YOU DIG
CALL TOLL FREE **800-362-2764**
OHIO UTILITIES PROTECTION SERVICE.

LAPAMA'A, L.L.C.,
AN OHIO LIMITED LIABILITY COMPANY
ORIG. 475.405 ACRES
O.R. 421, PG. 449
EXHIBIT "A"

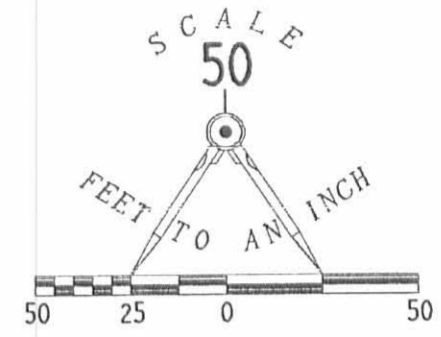
JOHN C. PARKER
AND GAYLEEN M. PARKER
3.00 ACRES
O.R. 108, PG. 83

TRACT A
5.667 ACRES
OF WHICH 0.148 ACRE IS WITHIN
THE HIGHWAY RIGHT-OF-WAY

TRACT B
5.000 ACRES
OF WHICH 0.132 ACRE IS WITHIN
THE HIGHWAY RIGHT-OF-WAY

COUNTY HIGHWAY 37

TOWNSHIP ROAD 31 (40' R/W)



LEGEND:

- 5/8 INCH IRON ROD SET
- ⊙ RAILROAD SPIKE SET
- 1/2 INCH IRON ROD FOUND
- ⊗ RAILROAD SPIKE FOUND
- STONE FOUND IN MONUMENT BOX

SURVEY OF TWO TRACTS
OUT OF THE LAPAMA'A L.L.C.
AN OHIO LIMITED LIABILITY COMPANY
ORIGINAL 475.405 ACRE TRACT
OFFICIAL RECORD 421, PAGE 449
EXHIBIT "A"
VIRGINIA MILITARY SURVEY 10122
McARTHUR TOWNSHIP
LOGAN COUNTY, OHIO

NOTE:

BY GRAPHIC PLOTTING ONLY. THE AREA SHOWN IN LOGAN COUNTY IS IN FLOOD ZONE "C". AREA OF MINIMAL FLOODING PER THE FLOOD INSURANCE RATE MAP PANEL NUMBER 390772 0095 C DATED MAY 15, 1985

NO FIELD SURVEYING WAS PERFORMED TO DETERMINE THESE ZONES AND AN ELEVATION CERTIFICATE MAY BE NEEDED TO VERIFY THIS DETERMINATION OR TO APPLY FOR A VARIANCE FROM THE FEDERAL EMERGENCY MANAGEMENT AGENCY.



SURVEYED BY: ORIGINAL STAMP IN GREEN

JEFFREY I. LEE
PROFESSIONAL SURVEYOR 6359
MAY 9, 2000
REVISED: JULY 14, 2000

COPYRIGHT 2000 BY:
LEE SURVEYING & MAPPING CO., INC.
117 North Madriver Street
BELLEFONTAINE, OHIO 43311
(937) 593-7335

D-377 HDRL1768 L-1768-2

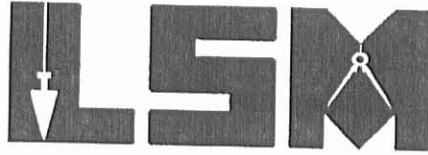
INDEXED ON MAP
2001 GP

REVID 7-16-01 sum ok

Lee Surveying and Mapping Co., Inc.

Land Surveys • Topography • Subdivisions • Construction Layout

117 N. Madriver St.
Bellefontaine OH 43311



Phone: (937) 593-7335
Fax: (937) 593-7444

LAPAMA'A, LLC 20 FEET WIDE CURTAIN DRAIN EASEMENT OVER THE 475.405 ACRES

Lying in Virginia Military Surveys 10122, 10248 and 10249, McArthur Township, Logan County, Ohio.

Being a 20 feet wide curtain drain easement over of the Lapama'a LLC original 475.405 acre tract as deeded and described in Official Record 421, Page 449, Exhibit A of the Logan County Records of Deeds and being more particularly described as follows:

Beginning at a stone in a monument box found on the center-line of County Highway 37 at the intersection with the center-line of Township Road 31.

THENCE, with the center-line of Township Road 31 (40 feet wide), S 5°-45'-00" E, a distance of 630.66 feet to a 5/8 inch iron rod set.

THENCE, with the north line of the Eva L. Kennedy 1.377 acre tract, (O.R. 477, Pg. 221), S 84°-15'-00" W, a distance of 300.00 feet to a 5/8 inch iron rod set at the TRUE POINT OF BEGINNING, passing a 5/8 inch iron rod set at 20.00 feet.

THENCE, with the west line of the said 1.377 acre tract, S 5°-45'-00" E, a distance of 220.00 feet to a point, passing a 5/8 inch iron rod set at 200.00 feet.


THENCE, S 84°-15'-00" W, a distance of 20.00 feet to a point.

THENCE, N 5°-45'-00" W, a distance of 220.00 feet to a point.

THENCE, N 84°-15'-00" E, a distance of 20.00 feet to the point of beginning.

The basis for bearings is the center-line of Township Road 31, being S 5°-45'-00" E, and all other bearings are from angles and distances measured in a field survey by Lee Surveying and Mapping Co., Inc. on December 19, 1997.

Description prepared by:


Jeffrey I. Lee
Professional Surveyor 6359
June 27, 2001



INDEXED ON MAP
800170-1

REC'D 7-10-01 SMJ Ok
Lee Surveying and Mapping Co., Inc.

Land Surveys • Topography • Subdivisions • Construction Layout

117 N. Madriver St.
Bellefontaine OH 43311



Phone: (937) 593-7335
Fax: (937) 593-7444

**LAPAMA'A, LLC
20 FEET WIDE CURTAIN DRAIN EASEMENT
OVER TRACTS E, F AND G**

Lying in Virginia Military Surveys 10122, 10248 and 10249, McArthur Township, Logan County, Ohio.

Being a 20 feet wide curtain drain easement over three of the Lapama'a LLC 1.377 acre tracts, as deeded and described in Official Record 421, Page 449, Exhibits A1, A2, and A3 of the Logan County Records of Deeds and being more particularly described as follows:

Being 20 feet wide along the west line of the said 1.377 acre tracts and more particularly described as follows:

Beginning at a stone in a monument box found on the center-line of County Highway 37 at the intersection with the center-line of Township Road 31.

THENCE, with the center-line of Township Road 31 (40 feet wide), S 5°-45'-00" E, a distance of 830.66 feet to a 5/8 inch iron rod set.

THENCE, with the south line of the Eva L. Kennedy 1.377 acre tract, (O.R. 477, Pg. 221), S 84°-15'-00" W, a distance of 280.00 feet to a point at the TRUE POINT OF BEGINNING, passing a 5/8 inch iron rod set at 20.00 feet.

THENCE, S 5°-45'-00" E, a distance of 600.00 feet to a point.

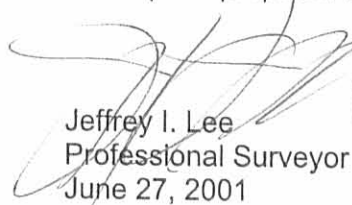
THENCE, with the north line of the Lapama'a LLC 1.377 acre tract (O.R. 421, Pg. 449, Exhibit A4), S 84°-15'-00" W, a distance of 20.00 feet to a 5/8 inch iron rod set.

THENCE, N 5°-45'-00" W, a distance of 600.00 feet to a 5/8 inch iron rod set, passing 5/8 inch iron rods set at 200.00 feet and at 400.00 feet.

THENCE, with the south line of the said Eva L. Kennedy 1.377 acre tract, N 84°-15'-00" E, a distance of 20.00 feet to the point of beginning.

The basis for bearings is the center-line of Township Road 31, being S 5°-45'-00" E, and all other bearings are from angles and distances measured in a field survey by Lee Surveying and Mapping Co., Inc. on December 19, 1997.

Description prepared by:


Jeffrey I. Lee
Professional Surveyor 6359
June 27, 2001



ORIGINAL STAMP IN GREEN

INDEXED ON MAP
8001 7D-2

REC'D 7-16-01 SMY BK

COUNTY HIGHWAY 37 (60')

N 84° 05' 15" E

20.00' N 84° 15' 00" E

300.00' S 84° 15' 00" W

630.66'

20.00'

200.00' S 05° 45' 00" E

20.00'

280.00' N 84° 15' 00" E

EVA L. KENNEDY
1.377 ACRES
O.R. 477, PG. 221

200.00' S 05° 45' 00" E

20.00'

300.00' S 84° 15' 00" W

20.00'

200.00' S 05° 45' 00" E

20.00'

300.00' S 84° 15' 00" W

200.00' S 05° 45' 00" E

20.00'

300.00' S 84° 15' 00" W

20.00' S 84° 15' 00" W

200.00' S 05° 45' 00" E

200.00' S 05° 45' 00" E

300.00' S 84° 15' 00" W

280.00' S 84° 15' 00" W

20.00'

20' WIDE CURTAIN DRAIN EASEMENT

20.00' N 05° 45' 00" W
220.00' S 05° 45' 00" E
200.00'

20.00' N 84° 15' 00" E
280.00'

20.00' S 84° 15' 00" W

20' WIDE CURTAIN DRAIN EASEMENT

TRACT E
LAPAMA A, LLC
1.377 ACRES
O.R. 421, PG. 449
EXHIBIT A1

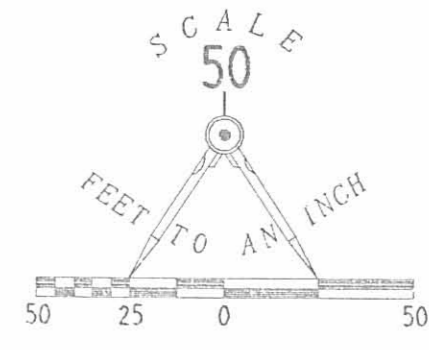
TRACT F
LAPAMA A, LLC
1.377 ACRES
O.R. 421, PG. 449
EXHIBIT A2

TRACT G
LAPAMA A, LLC
1.377 ACRES
O.R. 421, PG. 449
EXHIBIT A3

TRACT H
LAPAMA A, LLC
1.377 ACRES
O.R. 421, PG. 449
EXHIBIT A4

JOHN C. PARKER
2.00 ACRES
O.R. 158, PG. 622

LAPAMA A, LLC
ORIGINAL 475.405 ACRES
O.R. 421, PG. 449
EXHIBIT A



- LEGEND
- 5/8" IRON ROD SET
 - ⊗ MAG NAIL SET
 - ☐ STONE IN MONUMENT BOX FOUND
 - 1/2" IRON ROD FOUND
 - ⊗ RAILROAD SPIKE FOUND

REFERENCES
LOGAN COUNTY ENGINEER'S FILES:
FIELD BOOK 708, PAGE 68
R-6691

SURVEY OF TWO 20 FEET WIDE CURTAIN DRAIN EASEMENTS OVER THE LAPAMA A, LLC ORIGINAL 475.405 ACRE TRACT AND THREE 1.377 ACRE TRACTS OFFICIAL RECORD 421, PAGE 449 EXHIBITS A, A1, A2, AND A3 VIRGINIA MILITARY SURVEYS 10122, 10248 AND 10249 McARTHUR TOWNSHIP LOGAN COUNTY, OHIO

TOWNSHIP ROAD 31 (40')



SURVEYED BY:
JEFFREY L. LEE
PROFESSIONAL SURVEYOR 6359
JUNE 27, 2001

COPYRIGHT 1998 BY:
LEE SURVEYING & MAPPING CO., INC.
117 North Madriver Street
BELLEFONTAINE, OHIO 43311
(937) 593-7335

2 WORKING DAYS
BEFORE YOU DIG
CALL TOLL FREE 800-362-2764
OHIO UTILITIES PROTECTION SERVICE.

D 321 ROPPEASE

L-1768-2

INDEXED ON MAP
800 1 78