

to 2 Bech & a Sugar (Sugar cane), then S 78 1/2 W to a Bech edge
then S 10 1/2 E 200 poles to a Bech S E L to 98 89; then S 78 1/2 W
105 poles to the beginning (this Survey was made by request of
Mr. J. the Agent but it interferes with other Surveys south
of it, one of which is its elder, and which it of course cannot
sup.

D Hopkins C.S.D.

422

8435

Surveyed Sept. 6. 1838 for Thomas Spencer to fill the calls of
his dec'd part of Military Survey N^o 9950 as follows. Beginning
at the SW L. of Maiden Stonehills Set. at a Stone, then
N 11 1/2 W 126 1/2 poles to a Stone marked T.S. then S 78 1/2 W 63 1/4 poles
to a Stone & two therefrom one root & Crab Apple, then S 11 1/2 E 126 1/2
poles to a stake in a field (this line for 60 poles in length, taken at right
about 3 poles wide off L. B.W. young lot) then N 78 E 63 1/4 poles to
the beginning.

423

8262

Surveyed Sept. 13. 1838 for John Dickson 10 Lots determined at
the South Addition to ^{S Addition} ^{D Addition} Logans with as follows. Beginning at the
S. E. corner, come to Lot N^o 47 of the old or first South Addition, west
side of Center Street, then S 29 1/2 W 60 feet crossing Sidney Road, plan-
ned a Stone for the beginning, then putting said road and extending 8 poles
back on a course of S 35 E & running N 55 W 4 poles each, laid off 4 lots; again
commencing S 55 E 60 feet from the stone, laid off 2 lots same & made
an alley east of them 10 feet. Continued two other lots same size, and
made White Oak Street 3 poles wide, then copied said street and
made two other lots same size, in all 10 lots.

William Mearn
The Elder chmn

D Hopkins C.S.D.

N^o 424

8436

Surveyed for James Ritchey 150 acres of Land, as follows. Begin-
ning at a Lime Stone marked + at the SW Corner to Military Survey
N^o 9929, the original Corner Oak Elm which lay all down. Then N 11 1/2 W
100 poles to a Stone in the Lime Road then S 78 1/2 W 240 poles to
a Stone, from which a Gray Ash 18 inches in diameter bears N 5 E 32
Links, then S 11 1/2 E 100 poles to a Stone, then N 78 E 240 poles to the beginning.

Containing 150 Aers. Also Surveyed 75 aers part of said Survey N^o 9929 beginning as aforesaid; then N 11¹/₂ W 200 poles to a Stone in a prairie then N 78¹/₂ E 60 poles to a Stone; then S 11¹/₂ E 200 poles to a Stone; then S 78¹/₂ W 60 poles to the beginning. Also Surveyed for William Laughhead

Laughhead

Beginning at 3 Elm and a Stone N^o W Corner of said Survey; then S 11¹/₂ E 150 poles to a Stone in the Prairie; then N 78¹/₂ E 80 poles to a Stone in a Prairie; then N 11¹/₂ W 150 poles to a Stone in a prairie in the N^o line of the Survey; then S 78¹/₂ W 80 poles to the beginning Containing 75 Aers. Also

Watt

Surveyed for John Watt. Beginning at a Stone in the West line of said Survey N^o 9929, and N 11¹/₂ W 170 poles from its SW^o corner then S 78¹/₂ W 285 poles crossing a Big road at 82 poles to a Stone & S^o M^o all picky then N 11¹/₂ W 70 poles to a Stake, N 78¹/₂ E 185 poles to a Stone, then N 11¹/₂ W 185 poles to a Stone to Black & Elm, then S 78¹/₂ E 100 poles to a Stone in the West line of Survey 9929; then with said line S 11¹/₂ E 175 poles to the beginning Containing 190³/₄ Aers. Also Surveyed for John Gabbe

Gabbe

Part of said Survey 9929 Beginning at a Black White Oak & Elm in a County Road. S^o E^o Corner to James Conroy by Carter to Brighton & Maughlin; then S 78¹/₂ W 230 poles to a White oak & Mulberry in Ritchys Eastly line Corner a Adcock Carter; then N 11¹/₂ W with Ritchys line 121 poles passing Ritchys Corner at 117 poles to a Stake in a prairie; then S 78¹/₂ E 20 poles to a Stake; then N 11¹/₂ W 50 poles to a Stone Corner to William Laughhead; then N 78¹/₂ E 87 poles to a Stone; then S 11¹/₂ E 140 poles to a Stone; Corner to Alex andw Creighton; then N 78¹/₂ E 202 poles to a Sugar; then S 11¹/₂ E 25 poles to the

beginning Containing 60 Aers; also for said Gabbe Beginning at W^o Laughhead's N^o E^o Corner a Stone in a prairie in N^o line of the original Survey; then with said line N 78¹/₂ E 20 poles to a Stake; then S 11¹/₂ E 40 poles to a Stake. Corner to Creighton; then S 78¹/₂ W 20 poles to a Stake in Laughhead's line; then with said line N 11¹/₂ W 40 poles to the beginning Containing 5 Aers, and for Alex andw Creighton part of said Survey

Creighton

Beginning at a Sugar, N^o E^o Corner to John Gabbe; then N 11¹/₂ W 40 poles to a Black Oak, Corner to James Maughlin; then S 78¹/₂ W 100 poles to a Stone another of said Maughlin's Corner; then N 11¹/₂ E 48 poles to a Stone in a prairie; then S 78¹/₂ W 8 poles to Stone in Prairie; then N 11¹/₂ W 107 poles to Stake in a prairie; then S 78¹/₂ W 40 poles to Stake (the preceding corners are all Corners to J^o Maughlin) then N 11¹/₂ W 60 poles to Stake Corner to Gabbe 5 Aers.

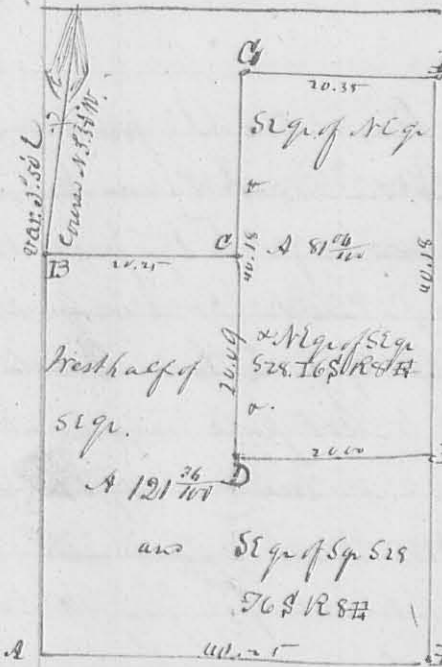
Maughlin

thence S 78° W 20 poles to a Stake; in NW Lawhead in, thence with said
 line S 11° E 110 poles to a Stake; by SE corner; thence N 74° E 8 poles to a Stake;
 thence S 11° E 146 poles to a Stake, Corner to Oak; thence N 78° E 202 po-
 les to the beginning. Containing 120 Acres. also part of same Survey for
 James Maughlin, Beginning at a small Bur Oak, Hickory on
 the bank of a small drain; thence S 11° E 48 1/2 poles to a Stake near a large
 Black Oak; thence S 78° W 140 poles to a Stake; thence N 11° W 45 1/2 poles
 to a Stake; thence S 78° W 8 poles to a Stake; thence N 11° W 100 poles to a
 Stake; thence S 78° W 40 poles to a Stake; thence N 11° W 100 poles to a Stake
 in the N Line of the Survey; thence with said line N 78° E 84 poles to
 the Stake N W Corner to William Wallaw; thence S 11° E 189 poles crossing
 a run to a Stake; thence N 78° E 29 poles to a Stake; thence S 11° E 11 poles
 to a Stake; thence N 78° E 76 poles to the beginning. Containing
 120 Acres. at same time Surveyed for Leida Miller part of the Survey
 adjoining the original Survey in the West is follow. Beginning at a Stake
 SW Corner to William Wood; thence N 11° W 100 poles to a Stake; thence
 S 78° W 63 7/8 poles to a Stake, Ash & Hickory; thence N 11° W 70 7/8 poles to a Stake
 Southwardly about one pole from a small hickory; thence S 78° W 56 7/8 poles to
 a Stake & two Sugar; thence S 11° E 170 7/8 poles to a hickory, Bur Oak, Elm
 Red Oak & hickory; thence N 78° E 120 7/8 poles to the beginning. Containing
 120 Acres. Surveyed for Leida Miller
 L. A. Depkin Sur. L. C. O.

Miller

N^o 425.

(8437)



This Survey was made Sept. 1838 for James Simpson
 & William Artw. in 528, 76 & 188, Linton Rivers
 Description of corners.

- A Beech 16 In. diameter S 44 W 42 Links
- ditto 16 " N 65 E 35 Links
- B White Oak 24 " diameter S 26 W 25 Links
- Beech 8 " " N 4 W 9 "
- C ditto 12 " " S 17 W 8 "
- D Hickory 15 " " N 57 E 18 "
- E Elm 3 " " N 86 E 9 1/2 "
- ditto 4 " " N 78 1/2 W 5 " "
- F Hickory 18 1/2 " S 84 W 3 Links, Red Oak 16 1/2 " N 61 E 9 " "
- G South E corner of the section; Red Oak 48 1/2 " S 63 E 15 " "
- H Ash 3 2/2 " N 45 W 9 Links; I Buck 18 1/2 " S 69 W 33 Links -
- K Buck 8 1/2 " N 52 E 15 1/2 Links -

L. A. Depkin Sur. L. C. O.