

Received 5-24-94
OK gEH

LESLIE H. GEESLIN
REGISTERED SURVEYOR NO. 5248
P.O. BOX 274
RUSHSVLVANIA, OHIO 43347
TELEPHONE: (513) 468-2793

BARNHART SURVEY

May 23, 1994

The following described real estate situated in the State of Ohio, County of Logan, Township of McArthur, being part of Virginia Military Survey 9905 and more particularly described as follows:

Beginning at a 3/4 inch iron bar found in the centerline of County Highway 49 at the northeast corner of Bruce Bleininger's 5.515 acre tract as described in O. R. Vol. 190 Page 434.

Thence with said Bleininger's north line S. 81° 59' 11" W. 651.55 feet to a 5/8 inch iron bar set.

Thence N. 8° 32' 02" W. 1065.04 feet to a 5/8 inch iron bar set.

Thence S. 67° 47' 45" E. 768.81 feet to a 5/8 inch iron bar set in said centerline, passing a 5/8 inch iron bar set at 745.72 feet.

Thence with said centerline S. 7° 45' 00" E. 678.07 feet to the place of beginning.

Containing 13.149 acres more or less of which 0.314 acre is in the right of way of County Highway 49.

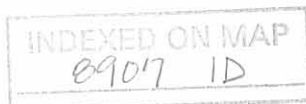
The above described 13.149 acre tract being out of the southeast corner of Allen Barnhart's 68.38 acre tract as described in D. B. Vol. 362 Page 864.

Bearings are based on an assumed bearing (S. 7° 45' 00" E.) for the centerline of County Highway 49 in this field survey by Leslie H. Geeslin, Reg. Surveyor 5248 on May 23, 1994.

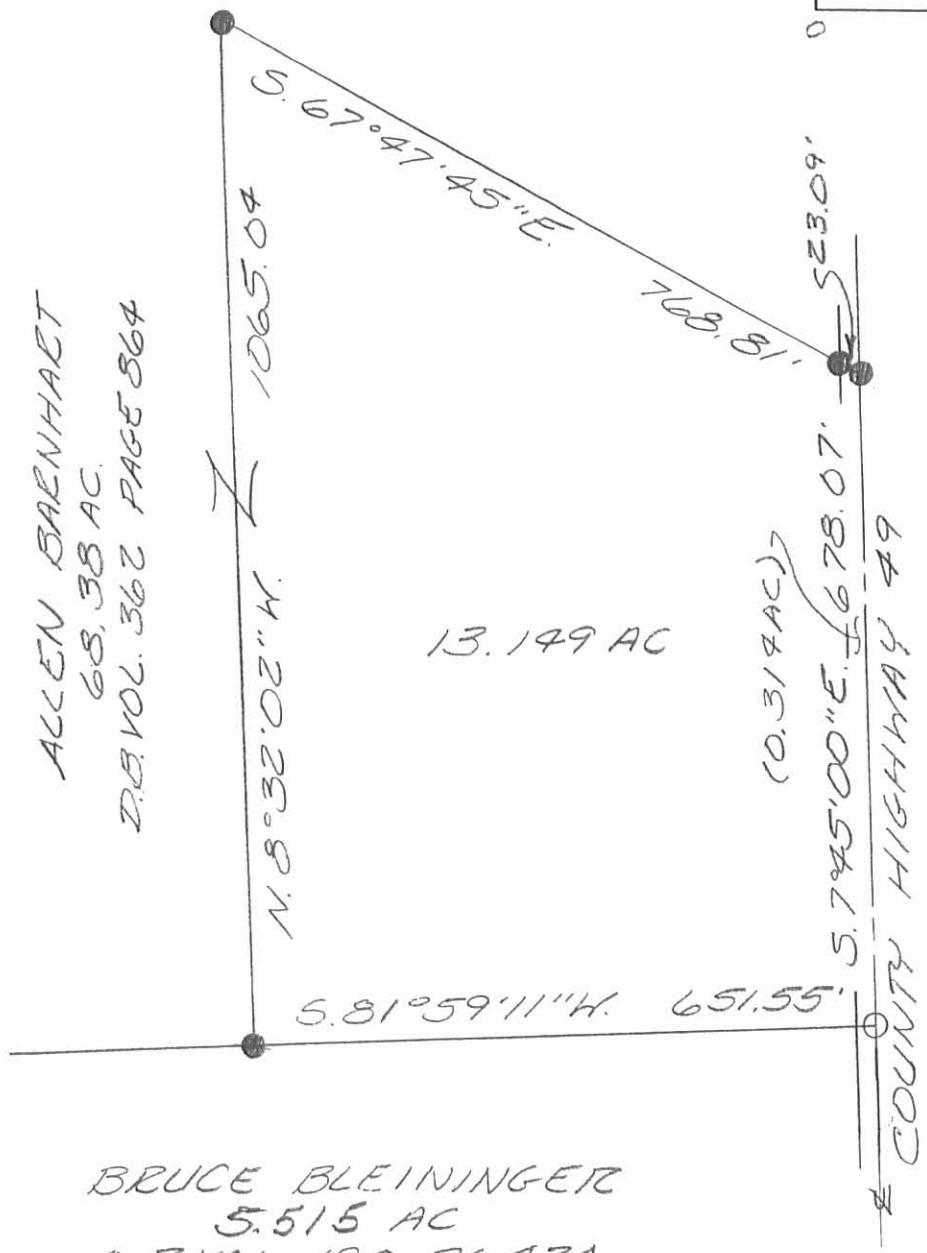


Leslie H. Geeslin

Mc A:10BRNHRT



SCALE: 1"=200'



13.149 AC

LEGEND:
 ○ = 3/4 INCH IRON BAR FOUND
 ● = 5/8 INCH IRON BAR SET

BRUCE BLEININGER
 5.515 AC
 O.R. VOL. 190 PG. 434

SURVEY OF 13.149 ACRES IN VIRGINIA
 MILITARY SURVEY 9905, McARTHUR
 TOWNSHIP, LOGAN COUNTY, OHIO
 FOR ALLEN BARNHART
 ON MAY 23, 1994



Leslie H. Geeslin
 LESLIE H. GEESLIN
 RUSHSVLVANIA, OH
 (513) 468-2793

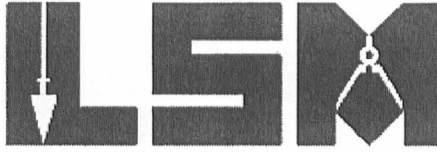
INDEXED ON MAP
 8907 IP

RECID 6-23-10 SMY&KV

Lee Surveying and Mapping Co., Inc.

Land Surveys • Topography • Subdivisions • Construction Layout

117 N. Madriver St.
Bellefontaine OH 43311



Phone: (937) 593-7335
Fax: (937) 593-7444
surveys@lsminc.us

TRUE 2.678 ACRES

Lying in Virginia Military Survey 9905, McArthur Township, Logan County, Ohio.

Being out of the Gary A. True and Theresa J. True 13.149 acre tract as deeded and described in Official Record 230, Page 656 of the Logan County Records of Deeds and being more particularly described as follows:

Commencing on a 1 inch iron pipe found in a monument box on the southeast corner of Virginia Military Survey 9905 on the intersection of the center-lines of Township Road 37 and County Highway 49.

THENCE, with the east line of Virginia Military Survey 9905 and the center-line of County Highway 49 (40 feet wide), N 07°-45'-00"W, a distance of 1661.32 feet to a 3/4 inch iron bar found at the TRUE POINT OF BEGINNING.

THENCE, with the north line of the Glendon P. Embry 5.515 acre tract (O.R. 749, Pg. 464), S 81°-59'-11"W, a distance of 377.53 feet to a 5/8 inch iron rod set, passing a 5/8 inch iron rod set at 20.00 feet.

THENCE, N 09°-09'-58"E, a distance of 419.39 feet to a 5/8 inch iron rod set.

THENCE, S 80°-42'-05"E, a distance of 267.25 feet to a MAG nail set on the east line of Virginia Military Survey 9905 and the center-line of County Highway 49, passing a 5/8 inch iron rod set at 246.33 feet.

THENCE, with the east line of Virginia Military Survey 9905 and the center-line of County Highway 49, S 07°-45'-00"E, a distance of 321.15 feet to the point of beginning.

Containing 2.678 acres, of which 0.149 acre is within the highway right-of-way.

Property is subject to any and all previous easements and rights-of-way of record.

The basis for bearings is the east line of Virginia Military Survey 9905, being N 07°-45'-00"W, and all other bearings are from angles and distances measured in a field survey by Lee Surveying and Mapping Co., Inc. on June 21, 2010.

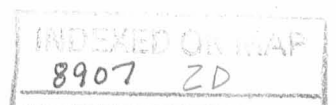


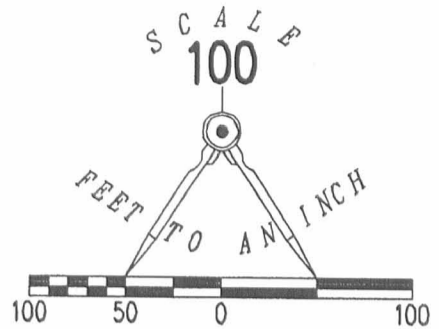
Description prepared by:

A handwritten signature in cursive script that reads 'William K. Bruce'.

William K. Bruce
Professional Surveyor 7437
June 22, 2010

4977610





GARY A. TRUE AND
THERESA J. TRUE
13.149 ACRES
O.R. 230, PG. 656

LEGEND:

- ⊕ 1 INCH IRON PIPE FOUND IN A MONUMENT BOX
- ⊙ 3/4 INCH IRON BAR FOUND
- MAG NAIL SET
- 5/8 INCH IRON ROD FOUND
- 5/8 INCH IRON ROD SET WITH PLASTIC I.D. CAP STAMPED "LSM 7437"

2.678 ACRES
OF WHICH 0.149 ACRE IS WITHIN
THE HIGHWAY RIGHT-OF-WAY

COUNTY HIGHWAY 49 (40')

N 09°09'58" E
419.39'

S 80°42'05" E
267.25'

S 81°59'11" W
377.53'

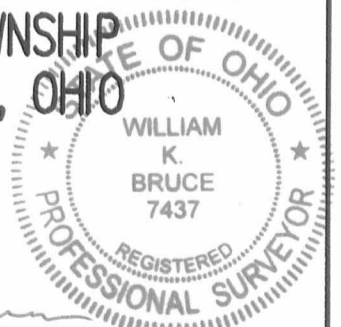
GLENDON P. EMBRY
5.515 ACRES
O.R. 749, PG. 464

(BASIS FOR BEARINGS)
N 07°45'00" W
1661.32'

**SURVEY OF 2.678 ACRES OUT OF THE
GARY A. TRUE AND
THERESA J. TRUE
13.149 ACRE TRACT
OFFICIAL RECORD 230, PAGE 656
VIRGINIA MILITARY SURVEY 9905
McARTHUR TOWNSHIP
LOGAN COUNTY, OHIO**

SURVEYED BY:

William K. Bruce
WILLIAM K. BRUCE
PROFESSIONAL SURVEYOR 7437
JUNE 21, 2010



ORIGINAL STAMP IN GREEN

INDEXED ON MAP
8907 ZP

2 WORKING DAYS

BEFORE YOU DIG



TOWNSHIP ROAD 37

CALL TOLL FREE **800-362-2764**

OHIO UTILITIES PROTECTION SERVICE.

COPYRIGHT 2010 BY:
LEE SURVEYING & MAPPING CO., INC.
117 North Madriver Street
BELLEFONTAINE, OHIO 43311
(937) 593-7335
surveys@lsminc.us
KSS D0610 4977610 L-4977-3

RECID 6-23-10 SML&K ✓

Lee Surveying and Mapping Co., Inc.

Land Surveys • Topography • Subdivisions • Construction Layout

117 N. Madriver St.
Bellefontaine OH 43311



Phone: (937) 593-7335
Fax: (937) 593-7444
surveys@lsminc.us

TRUE 2.678 ACRES

Lying in Virginia Military Survey 9905, McArthur Township, Logan County, Ohio.

Being out of the Gary A. True and Theresa J. True 13.149 acre tract as deeded and described in Official Record 230, Page 656 of the Logan County Records of Deeds and being more particularly described as follows:

Commencing on a 1 inch iron pipe found in a monument box on the southeast corner of Virginia Military Survey 9905 on the intersection of the center-lines of Township Road 37 and County Highway 49.

THENCE, with the east line of Virginia Military Survey 9905 and the center-line of County Highway 49 (40 feet wide), N 07°-45'-00"W, a distance of 1661.32 feet to a 3/4 inch iron bar found at the TRUE POINT OF BEGINNING.

THENCE, with the north line of the Glendon P. Embry 5.515 acre tract (O.R. 749, Pg. 464), S 81°-59'-11"W, a distance of 377.53 feet to a 5/8 inch iron rod set, passing a 5/8 inch iron rod set at 20.00 feet.

THENCE, N 09°-09'-58"E, a distance of 419.39 feet to a 5/8 inch iron rod set.

THENCE, S 80°-42'-05"E, a distance of 267.25 feet to a MAG nail set on the east line of Virginia Military Survey 9905 and the center-line of County Highway 49, passing a 5/8 inch iron rod set at 246.33 feet.

THENCE, with the east line of Virginia Military Survey 9905 and the center-line of County Highway 49, S 07°-45'-00"E, a distance of 321.15 feet to the point of beginning.

Containing 2.678 acres, of which 0.149 acre is within the highway right-of-way.

Property is subject to any and all previous easements and rights-of-way of record.

The basis for bearings is the east line of Virginia Military Survey 9905, being N 07°-45'-00"W, and all other bearings are from angles and distances measured in a field survey by Lee Surveying and Mapping Co., Inc. on June 21, 2010.

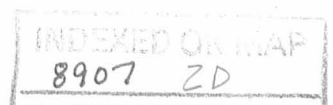


Description prepared by:

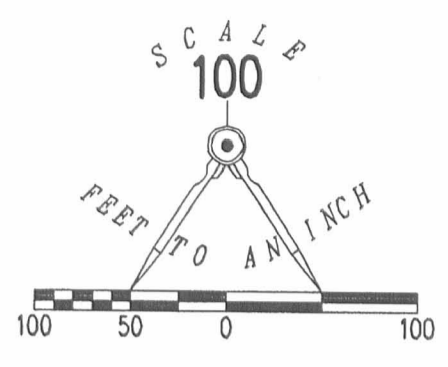
A handwritten signature in cursive script that reads 'William K. Bruce'.

William K. Bruce
Professional Surveyor 7437
June 22, 2010

4977610



REC'D 6-23-10 S.M.J. dk



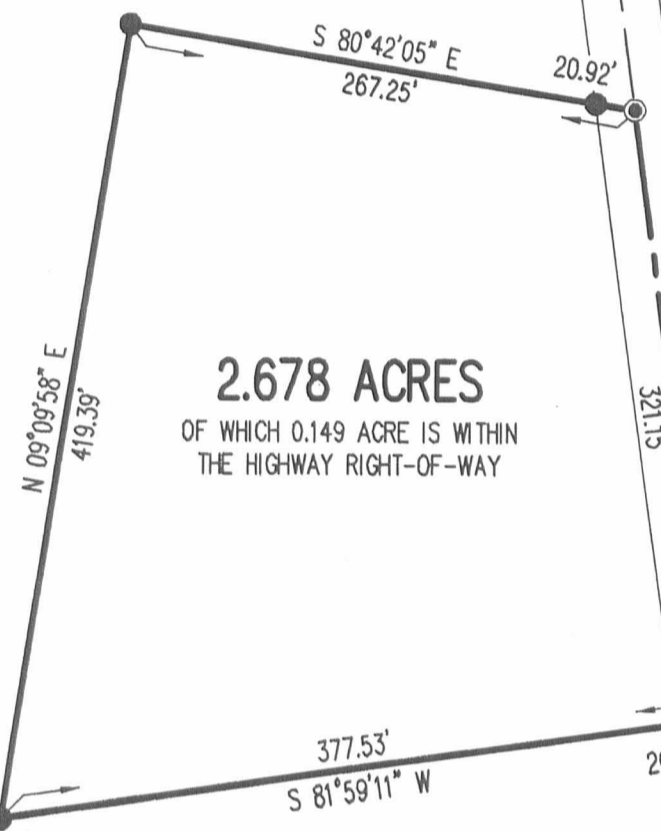
GARY A. TRUE AND
THERESA J. TRUE
13.149 ACRES
O.R. 230, PG. 656

LEGEND:

- ⊕ 1 INCH IRON PIPE FOUND IN A MONUMENT BOX
- ⊙ 3/4 INCH IRON BAR FOUND
- MAG NAIL SET
- 5/8 INCH IRON ROD FOUND
- 5/8 INCH IRON ROD SET WITH PLASTIC I.D. CAP STAMPED "LSM 7437"

2.678 ACRES
OF WHICH 0.149 ACRE IS WITHIN
THE HIGHWAY RIGHT-OF-WAY

COUNTY HIGHWAY 49 (40')



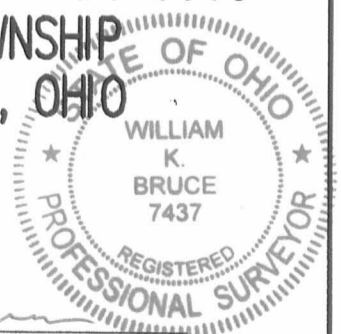
GLENDON P. EMBRY
5.515 ACRES
O.R. 749, PG. 464

(BASIS FOR BEARINGS)
N 07°45'00\"/>

**SURVEY OF 2.678 ACRES OUT OF THE
GARY A. TRUE AND
THERESA J. TRUE
13.149 ACRE TRACT
OFFICIAL RECORD 230, PAGE 656
VIRGINIA MILITARY SURVEY 9905
McARTHUR TOWNSHIP
LOGAN COUNTY, OHIO**

SURVEYED BY:

William K. Bruce
WILLIAM K. BRUCE
PROFESSIONAL SURVEYOR 7437
JUNE 21, 2010



ORIGINAL STAMP IN GREEN

INDEXED ON MAP
8907 ZP

2 WORKING DAYS
BEFORE YOU DIG
CALL TOLL FREE **800-362-2764**
OHIO UTILITIES PROTECTION SERVICE.

TOWNSHIP ROAD 37

COPYRIGHT 2010 BY:
LEE SURVEYING & MAPPING CO., INC.
117 North Madriver Street
BELLEFONTAINE, OHIO 43311
(937) 593-7335
surveys@lsminc.us
KSS D0610 4977610 L-4977-3