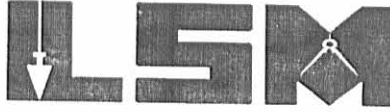


REC'D 10-8-03 SUM OK

Lee Surveying and Mapping Co., Inc.

Land Surveys • Topography • Subdivisions • Construction Layout

117 N. Madriver St.
Bellefontaine OH 43311



Phone: (937) 593-7335
Fax: (937) 593-7444

AIKEN 2.000 ACRES

Lying in Virginia Military Survey 9932, McArthur Township, Logan County, Ohio.

Being out of the Miriam Aiken original 75.72 acre tract as deeded and described in Official Record 314, Page 542, Parcel No. 2, Tract No. I, of the Logan County Records of Deeds and being more particularly described as follows:

Beginning at a MAG nail set at the intersection of the center-lines of U.S. Route 68 and Ohio Route 274.

THENCE, with the center-line of Ohio Route 274 (width varies), S 78°-37'-25" W, a distance of 384.36 feet to a MAG nail set at the TRUE POINT OF BEGINNING.

THENCE, with the center-line of Ohio Route 274, S 78°-37'-25" W, a distance of 272.69 feet to a MAG nail set.

THENCE, with the center-line of Ohio Route 274, S 78°-51'-43" W, a distance of 111.67 feet to a MAG nail set.

THENCE, with the east line of the Trustees of McArthur Township 0.82 acre tract (Vol. 60, Pg. 50), N 11°-18'-21" W, a distance of 189.79 feet to a 5/8 inch iron rod set, passing a 5/8 inch iron rod set at 30.00 feet.

THENCE, with the north line of the said 0.82 acre tract, S 78°-42'-28" W, a distance of 195.00 feet to a 5/8 inch iron rod set on Ohio Route 638 center-line P.I. Station 52+62.76 (Logan County S.H. 395 Sec. A, Logan County Engineers File L-29), passing a 5/8 inch iron rod set at 180.70 feet.

THENCE, with the center-line of Ohio Route 638, N 10°-50'-46" W, a distance of 29.01 feet to a 5/8 inch iron rod set.

THENCE, N 79°-36'-47" E, a distance of 578.95 feet to a 5/8 inch iron rod set, passing a 5/8 inch iron rod set at 17.96 feet.

THENCE, S 11°-22'-35" E, a distance of 209.55 feet to the point of beginning, passing a 5/8 inch iron rod set at 179.55 feet.

Containing 2.000 acres, of which 0.273 acres are within the highway rights-of-way.

The basis for bearings is the center-line of Ohio Route 638, being N 24°-09'-00" W, and all other bearings are from angles and distances measured in a field survey by Lee Surveying and Mapping Co., Inc. on September 22, 2003.

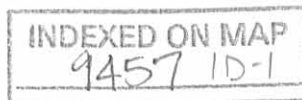
Description prepared by:



ORIGINAL STAMP IN GREEN

William K. Bruce
Professional Surveyor 7437
September 30, 2003

L-3609

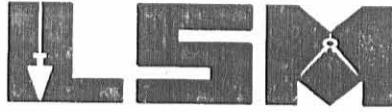


1 REC'D 10-8-03 SMy OK

Lee Surveying and Mapping Co., Inc.

Land Surveys • Topography • Subdivisions • Construction Layout

117 N. Madriver St.
Bellefontaine OH 43311



Phone: (937) 593-7335
Fax: (937) 593-7444

AIKEN 96.680 ACRES

Lying in Virginia Military Survey 9932, McArthur and Rushcreek Townships, Logan County, Ohio.

Being out of the Miriam Aiken original 75.72 acre and all of the 3.06 acre tract as deeded and described in Official Record 314, Page 542, Parcel No. 2, Tracts No. I and II and all of the 19.91 acre tract as deeded and described in Official Record 525, Page 892 of the Logan County Records of Deeds and being more particularly described as follows:

Beginning at a MAG nail set at the intersection of the center-lines of U.S. Route 68 and Ohio Route 274.

THENCE, with the center-line of Ohio Route 274 (width varies), S 78°-37'-25" W, a distance of 384.36 feet to a MAG nail set.

THENCE, N 11°-22'-35" W, a distance of 209.55 feet to a 5/8 inch iron rod set, passing a 5/8 inch iron rod set at 30.00 feet.

THENCE, S 79°-36'-47" W, a distance of 578.95 feet to a 5/8 inch iron rod set, passing a 5/8 inch iron rod set at 560.99 feet.

THENCE, with the center-line and the center-line extended of Ohio Route 638 (width varies) and the east line of the William Milroy 100 acre tract (Vol. 93, Pg. 29), N 10°-50'-46" W, a distance of 1885.75 feet to a 5/8 inch iron rod set, passing a 5/8 inch iron rod set on center-line P.I. Station 66+14.61 (Logan County S.H. 395 Sec. A, Logan County Engineers File L-29) at 1326.45 feet.

THENCE, with the north line of the said 100 acre tract, S 79°-28'-27" W, a distance of 132.43 feet to a MAG nail set in the center-line of Ohio Route 638, passing a 5/8 inch iron rod set at 91.27 feet.

THENCE, with the center-line of Ohio Route 638, N 24°-09'-00" W, a distance of 678.84 feet to a MAG nail set.

THENCE, with the south line of the Melvin L. Shields 19.74 acre tract (Vol. 357, Pg. 127), N 79°-12'-30"E, a distance of 1509.40 feet to a 5/8 inch iron rod set, passing a 5/8 inch iron rod set at 41.11 feet.

THENCE, with the west line of the Elmer L. Hochstetler 36.0 acre tract (O.R. 610, Pg. 907, Parcel No. 4), S 11°-10'-38" E, a distance of 1008.05 feet to a 5/8 inch iron rod set.

THENCE, with the south line of the said 36.0 acre tract and the Elmer L. Hochstetler 11.12 acre tract (O.R. 610, Pg. 907, Parcel No. 1), N 79°-50'-55" E, a distance of 1188.62 feet to a MAG nail set in the center-line of U.S. Route 68, passing a 5/8 inch iron rod set at 1143.59 feet.

THENCE, with the center-line of U.S. Route 68 (70 feet wide), S 28°-39'-45" W, a distance of 184.00 feet to a MAG nail set at center-line station 224+00 (Logan Co. S.H. 226, Sec. D, Logan County Engineers File L-18).

THENCE, with the center-line of U.S. Route 68, S 29°-05'-33" W, a distance of 2076.20 feet to the point of beginning.

Containing 96.680 acres, of which 3.997 acres are within the highway rights-of-way, 84.292 acres are in McArthur Township and 12.388 acres are in Rushcreek Township.

The basis for bearings is the center-line of Ohio Route 638, being N 24°-09'-00" W, and all other bearings are from angles and distances measured in a field survey by Lee Surveying and Mapping Co., Inc. on September 22, 2003.

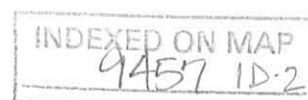
Description prepared by:



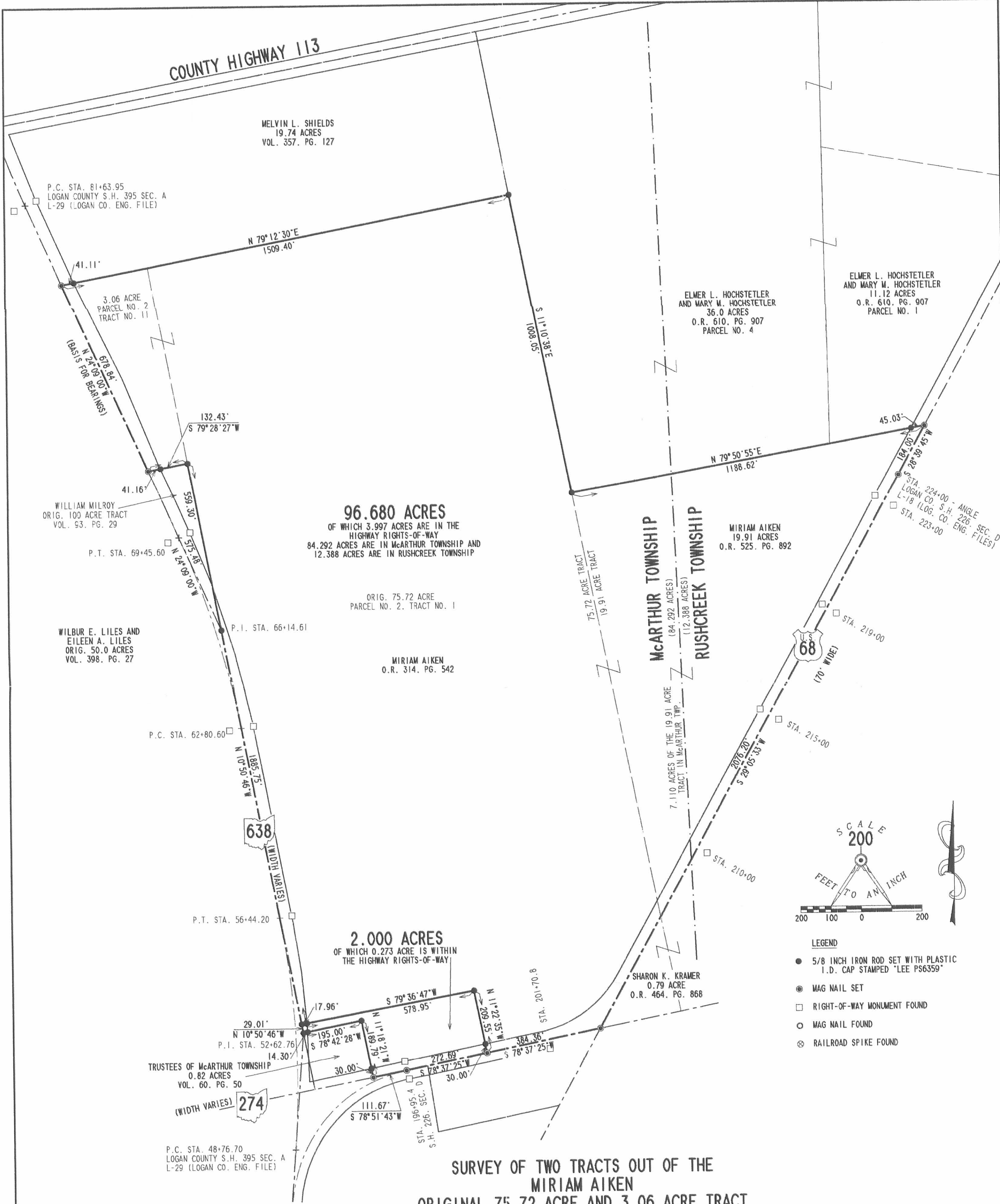
ORIGINAL STAMP IN GREEN

A handwritten signature in black ink that reads 'William K. Bruce'.

William K. Bruce
Professional Surveyor 7437
September 30, 2003



L-3609



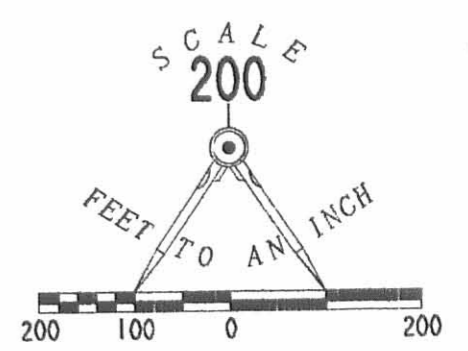
96.680 ACRES
 OF WHICH 3.997 ACRES ARE IN THE
 HIGHWAY RIGHTS-OF-WAY
 84.292 ACRES ARE IN McARTHUR TOWNSHIP AND
 12.388 ACRES ARE IN RUSHCREEK TOWNSHIP

ORIG. 75.72 ACRE
 PARCEL NO. 2, TRACT NO. 1

MIRIAM AIKEN
 O.R. 314, PG. 542

2.000 ACRES
 OF WHICH 0.273 ACRE IS WITHIN
 THE HIGHWAY RIGHTS-OF-WAY

**SURVEY OF TWO TRACTS OUT OF THE
 MIRIAM AIKEN
 ORIGINAL 75.72 ACRE AND 3.06 ACRE TRACT
 OFFICIAL RECORD 314, PAGE 542
 PARCEL NO. 2, TRACTS NO. 1 AND NO. 11
 AND 19.91 ACRE TRACT
 OFFICIAL RECORD 525, PAGE 892
 VIRGINIA MILITARY SURVEY 9932
 McARTHUR AND RUSHCREEK TOWNSHIPS
 LOGAN COUNTY, OHIO**



- LEGEND**
- 5/8 INCH IRON ROD SET WITH PLASTIC I.D. CAP STAMPED "LEE PS6359"
 - ⊙ MAG NAIL SET
 - RIGHT-OF-WAY MONUMENT FOUND
 - MAG NAIL FOUND
 - ⊗ RAILROAD SPIKE FOUND



SURVEYED BY:
William K. Bruce
 WILLIAM K. BRUCE
 PROFESSIONAL SURVEYOR 7437
 SEPTEMBER 22, 2003

COPYRIGHT 2003 BY:
LEE SURVEYING & MAPPING CO., INC.
 117 North Medriver Street
 BELLEFONTAINE, OHIO 43311
 (937) 593-7335

2 WORKING DAYS
BEFORE YOU DIG
 CALL TOLL FREE **800-362-2764**
 OHIO UTILITIES PROTECTION SERVICE.

INDEXED ON MAP
 9457 1P

REC'D 10-8-03 SWM OK

Lee Surveying and Mapping Co., Inc.

Land Surveys • Topography • Subdivisions • Construction Layout

117 N. Madriver St.
Bellefontaine OH 43311



Phone: (937) 593-7335
Fax: (937) 593-7444

MILROY 0.850 ACRE

Lying in Virginia Military Survey 9932, McArthur Township, Logan County, Ohio.

Being the remainder of the William Milroy original 100 acre tract as deeded and described in Volume 93, Page 29, of the Logan County Records of Deeds, and being more particularly described as follows:

Beginning for reference at 5/8 inch iron rod set in the center-line of Ohio Route 638 (width varies) at the center-line P.I. station of 52+62.76 (Logan County S.H. 395 Sec. A, Logan County Engineer's File L-29), on the north line of the Trustees of McArthur Township 0.82 acre tract (Vol. 60, Pg. 50).

THENCE, with the center-line of Ohio Route 638, N 10°-50'-46" W, a distance of 1355.46 feet to a 5/8 inch iron rod set in the center-line of Ohio Route 638 at the center-line P.I. Station 66+14.61 at the TRUE POINT OF BEGINNING, passing a 5/8 inch iron rod set at a distance of 29.01 feet.

THENCE, with the center-line of Ohio Route 638, N 24°-09'-00" W, a distance of 575.48 feet to a MAG nail set.

THENCE, with the south line of the Miriam Aiken 3.06 acre tract (O.R. 314, Pg 542, Parcel No.2, Tract No. II), N 79°-28'-27" E, a distance of 132.43 feet to a 5/8 inch iron rod set, passing a 5/8 inch iron rod set at 41.16 feet.

THENCE, with the west line of the Miriam Aiken 75.72 acre tract (O.R. 314, Pg. 542, Parcel No. 2, Tract No.I), S 10°-50'-46" E, a distance of 559.30 feet to the point of beginning.

Containing 0.850 acre, of which 0.437 acre are within the highway right-of-way.

The basis for bearings is the center-line of Ohio Route 638, being N 24°-09'-00" W, and all other bearings are from angles and distances measured in a field survey by Lee Surveying and Mapping Co., Inc. on September 22, 2003.

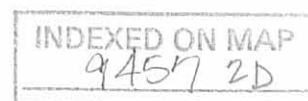
Description prepared by:

William K. Bruce
Professional Surveyor 7437
September 30, 2003



ORIGINAL STAMP IN GREEN

L-3609



REC'D 10-8-03 8M OK

MELVIN L. SHIELDS
19.74 ACRES
VOL. 357, PG. 127

3.06 ACRES
PARCEL NO. 2
TRACT NO. 11

(BASIS FOR BEARINGS)
N 24° 09' 00" W
678.84'

132.43'
S 79° 28' 27" W

0.850 ACRE

OF WHICH 0.437 ACRE IS WITHIN
THE HIGHWAY RIGHT-OF-WAY

41.16'

559.30'

P.T. STA. 69+45.60

N 24° 09' 00" W
515.48'

P.O.B.

P.I. STA. 66+14.61

WILBUR E. LILES AND
EILEEN A. LILES
ORIG. 50.0 ACRES
VOL. 398, PG. 27

MIRIAM AIKEN
ORIG 75.72 ACRES
O.R. 314, PG. 542, PARCEL NO.2, TRACT NO. 1

P.C. STA. 62+80.60

N 10° 50' 46" W
1355.46'

638

(WIDTH VARIES)

P.T. STA. 56+44.20

SURVEY OF 0.850 ACRES BEING
THE REMAINDER OF THE WILLIAM MILROY
ORIGINAL 100 ACRE TRACT
VOLUME 93, PAGE 29
VIRGINIA MILITARY SURVEY 9932
McARTHUR TOWNSHIP
LOGAN COUNTY, OHIO

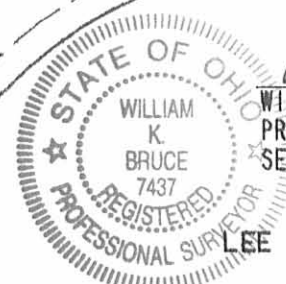
REFERENCE P.O.B.
P.I. STA. 52+62.76
LOGAN COUNTY S.H. 395 SEC. A
L-29 (LOGAN CO. ENG. FILE)

TRUSTEES OF McARTHUR TOWNSHIP
0.82 ACRES
VOL. 60, PG. 50

(WIDTH VARIES) 274

29.01'

SURVEYED BY:



WILLIAM K. BRUCE
PROFESSIONAL SURVEYOR 7437
SEPTEMBER 22, 2003

COPYRIGHT 2003 BY:

LEE SURVEYING & MAPPING CO., INC.
117 North Madriver Street
BELLEFONTAINE, OHIO 43311

(937) 593-7335

D 411 MIRAIKEN

L-3609-2

2 WORKING DAYS
BEFORE YOU DIG
CALL TOLL FREE **800-362-2764**
OHIO UTILITIES PROTECTION SERVICE.

INDEXED ON MAP
9457 2P

ORIGINAL STAMP IN GREEN

Received 11/13/03 OKJAH

Lee Surveying and Mapping Co., Inc.

Land Surveys • Topography • Subdivisions • Construction Layout

117 N. Madriver St.
Bellefontaine OH 43311



Phone: (937) 593-7335
Fax: (937) 593-7444

ZIESSLER 12.000 ACRES

Lying in Virginia Military Survey 9932, McArthur Township, Logan County, Ohio.

Being out of the John J. Ziessler and Doris A. Ziessler original 96.680 acre tract as deeded and described in Official Record 682, Page 399, Tract II of the Logan County Records of Deeds and being more particularly described as follows:

Beginning at a MAG nail found at the intersection of the center-lines of the Ohio Route 274 and Ohio Route 638.

THENCE, with the center-line of Ohio Route 638 (width varies), N 2°-27'-56"E, a distance of 224.57 feet to a MAG nail found AT THE TRUE POINT OF BEGINNING.

THENCE, continuing with the center-line of Ohio Route 638, N 10°-50'-46"W, a distance of 450.00 feet to a MAG nail set.

THENCE, N 79°-36'-47"E, a distance of 450.00 feet to a 5/8 inch iron rod set, passing a 5/8 inch iron rod set at 40.00 feet.

THENCE, S 78°-36'-21"E, a distance of 857.40 feet to a MAG nail set in the center-line of US Route 68, passing a 5/8 inch iron rod set at 820.66 feet.

THENCE, with the center-line of US Route 68 (70 feet wide), S 29°-05'-33"W, a distance of 433.65 feet to a MAG nail found.

THENCE, with the center-line of Ohio Route 274 (width varies), S 78°-37'-25"W, a distance of 384.36 feet to a MAG nail found.

THENCE, with the remainder of the Miriam Aiken 75.72 acre tract (O.R. 314, Pg. 542, Parcel No. 2), the following two (2) courses:

1.) N 11°-22'-35"W, a distance of 209.55 feet to a 5/8 inch iron rod found, passing a 5/8 inch iron rod found at 30.00 feet.

2.) S 79°-36'-47"W, a distance of 578.95 feet to the point of beginning, passing a 5/8 inch iron rod found at 538.95 feet.

Containing 12.000 acres, of which 1.179 acre is within the highway rights-of-way.

The basis for bearings is the center-line of Ohio Route 638, being N 10°-50'-46"W, and all other bearings are from angles and distances measured in a field survey by Lee Surveying and Mapping Co., Inc. on October 30, 2003

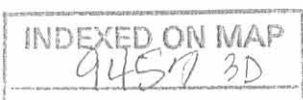
Description prepared by:



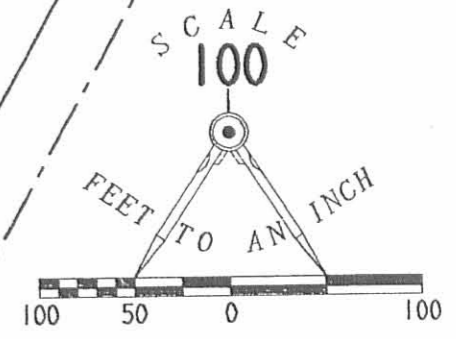
ORIGINAL STAMP IN GREEN

Jeffrey I. Lee
Jeffrey I. Lee
Professional Surveyor 6359
November 5, 2003

L-3609



JOHN J. ZIESSLER AND
DORIS A. ZIESSLER
ORIGINAL 96.680 ACRE TRACT
OFFICIAL RECORD 682, PAGE 399
TRACT II



12.000 ACRES
OF WHICH 1.179 ACRE IS
WITHIN THE HIGHWAY RIGHTS-OF-WAY

MIRIAM AIKEN
REMAINDER OF THE 75.72 ACRE TRACT
O.R. 314, PG. 542
PARCEL NO. 2

SURVEY OF 12.000 ACRES OUT OF THE
JOHN J. ZIESSLER AND DORIS A. ZIESSLER
ORIGINAL 96.680 ACRE TRACT
OFFICIAL RECORD 682, PAGE 399, TRACT II
VIRGINIA MILITARY SURVEY 9932
McARTHUR TOWNSHIP
LOGAN COUNTY, OHIO

LEGEND

- 5/8 INCH IRON ROD SET
- 5/8 INCH IRON ROD FOUND
- ⊙ MAG NAIL SET
- MAG NAIL FOUND

SURVEYED BY:

Jeffrey I. Lee
JEFFREY I. LEE
PROFESSIONAL SURVEYOR 6359
OCTOBER 30, 2003



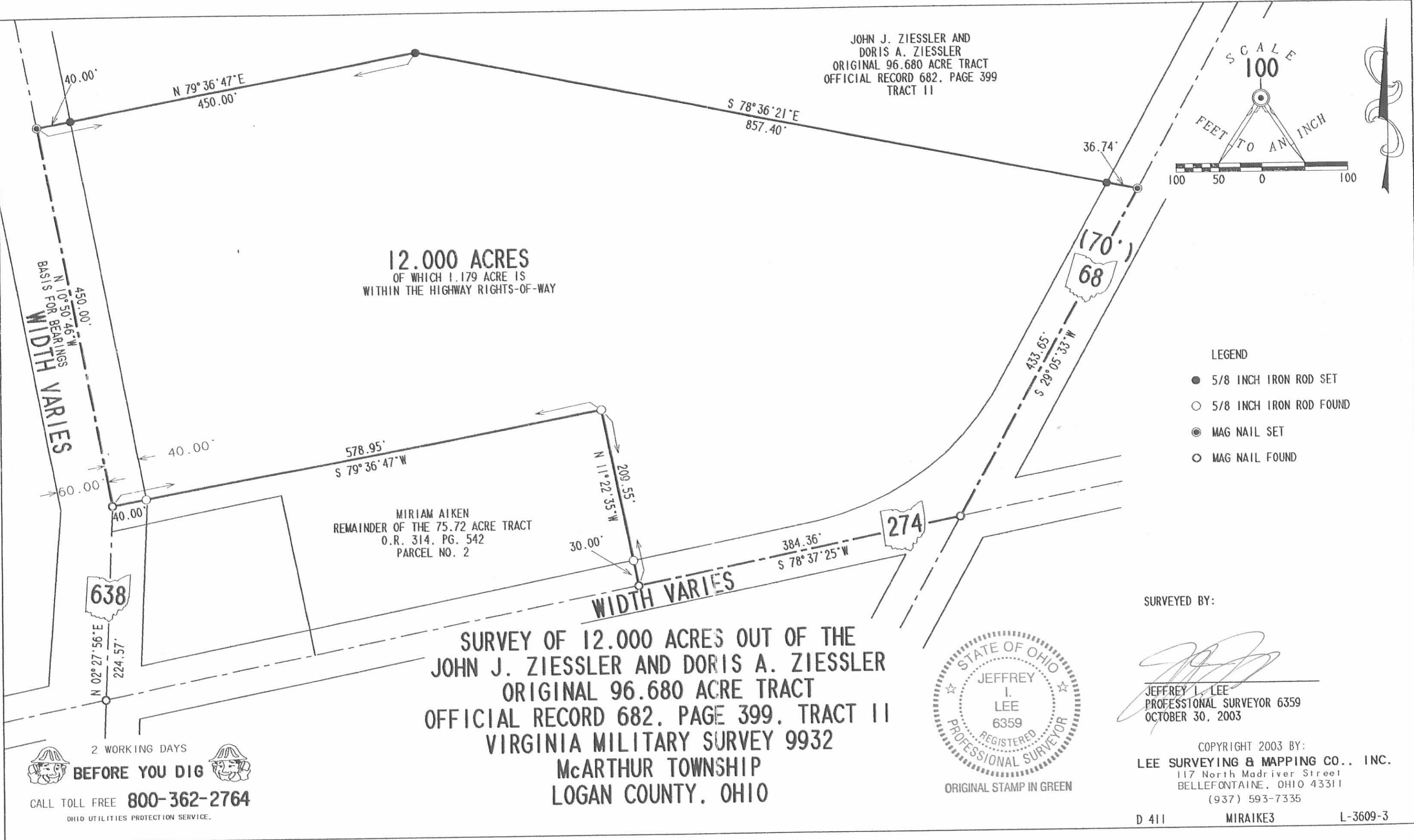
ORIGINAL STAMP IN GREEN

COPYRIGHT 2003 BY:
LEE SURVEYING & MAPPING CO., INC.
117 North Madriver Street
BELLEFONTAINE, OHIO 43311
(937) 593-7335

D 411 MIRAIKE3 L-3609-3

2 WORKING DAYS
BEFORE YOU DIG
CALL TOLL FREE **800-362-2764**
OHIO UTILITIES PROTECTION SERVICE.

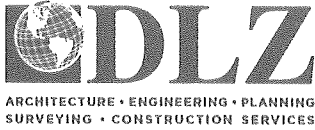
INDEXED ON MAP
9457 3P



1-8-20



APPROVED



INNOVATIVE IDEAS
EXCEPTIONAL DESIGN
UNMATCHED CLIENT SERVICE

SHRIKE HOLDINGS, LLC 5.564 ACRES

Lying in Virginia Military Survey 9932, McArthur Township, Logan County, Ohio (all records referenced herein refer to the Logan County Records of Deeds).

Being out of the Shrike Holdings, LLC, 12.000 acre tract as deeded and described in Official Record 1227, Page 129 and being more particularly described as follows:

COMMENCING at a MAG nail found on the center-line of Ohio Route 274 (width varies) at Station 196+95.4 (Plan L-18, S.H. 226, Section C) and also shown as Station 216+05.7 (Logan County engineer's Field Book 559, Page 76);

THENCE, with said center-line, N 82°-34'-30" E, a distance of 272.70 feet to MAG nail found at a southerly corner common to said 12.000 acre tract and the Richard D. Aiken and Sharon Aiken 2.000 acre tract as deeded and described in Official Record 1105, Page 664;

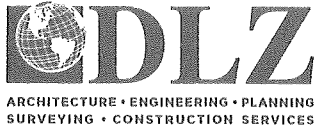
THENCE, with a common line to said 12.000 acre and 2.000 acre tracts, N 07°-24'-54" W, a distance of 209.43 feet to a 5/8 inch iron rod found at the **TRUE POINT OF BEGINNING**;

THENCE, continuing with a common line to said 12.000 acre and 2.000 acre tracts, **S 83°-34'-19" W**, passing a 5/8 inch iron rod found (I.D. cap stamped "LEE PS6359") at a distance of 560.95 feet, a total distance of **578.89 feet** to a 5/8 inch iron rod found (I.D. cap stamped "LEE PS6359") on the center-line of Ohio Route 638 (width varies);

THENCE, with said center-line and westerly line of said 12.000 acre tract, **N 06°-54'-09" W**, a distance of **449.93 feet** to a MAG nail set at a westerly corner common to said 12.000 acre tract and the Charles R. Stout, Jr. and Kathy S. Stout 84.680 acre tract as deeded and described in Official Record 693, Page 373, Tract II;

THENCE, with lines common to said 12.000 acre and 84.680 acre tracts, the following two (2) courses:

INDEXED ON MAP
9457



INNOVATIVE IDEAS
EXCEPTIONAL DESIGN
UNMATCHED CLIENT SERVICE

- 1) **N 83°-34'-07" E**, passing a 5/8 inch iron rod found (I.D. cap stamped "LEE PS6359") at a distance of 40.18 feet, a total distance of **450.07 feet** to a 5/8 inch iron rod found; and
- 2) **S 74°-39'-02" E**, a distance of **59.13 feet** to a point near the center of a swale;

THENCE, with a new division line through said 12.000 acre tract, **S 16°-42'-31" E**, a distance of **434.99 feet** to the **POINT OF BEGINNING**.

Containing **5.564 acres**, more or less, of which 0.413 acre is within the highway right-of-way.

Iron rebar set, where indicated, are 30 inches in length, 5/8 inch in diameter with a plastic I.D. cap stamped "DLZ OHIO INC."

Property is subject to any and all previous easements and rights-of-way of record.

Bearings and distances, described herein, are derived from GPS observations based on Grid North, Ohio State Plane Coordinate System, North Zone, NAD83 (2011, Epoch 2010), with the center-line of Ohio Route 274, having a bearing of N 82°-34'-30" E. Distances are expressed in U.S. Survey Feet. All other measurements are from angles and distances measured in a field survey by DLZ on December 19, 2019.



Description prepared by:

Daniel A. Neer

Professional Surveyor No. 8533

January 2, 2020

1921-2105.00



1-8-20

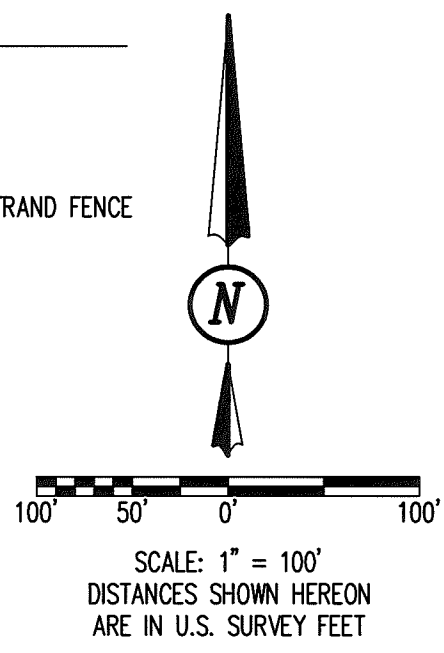
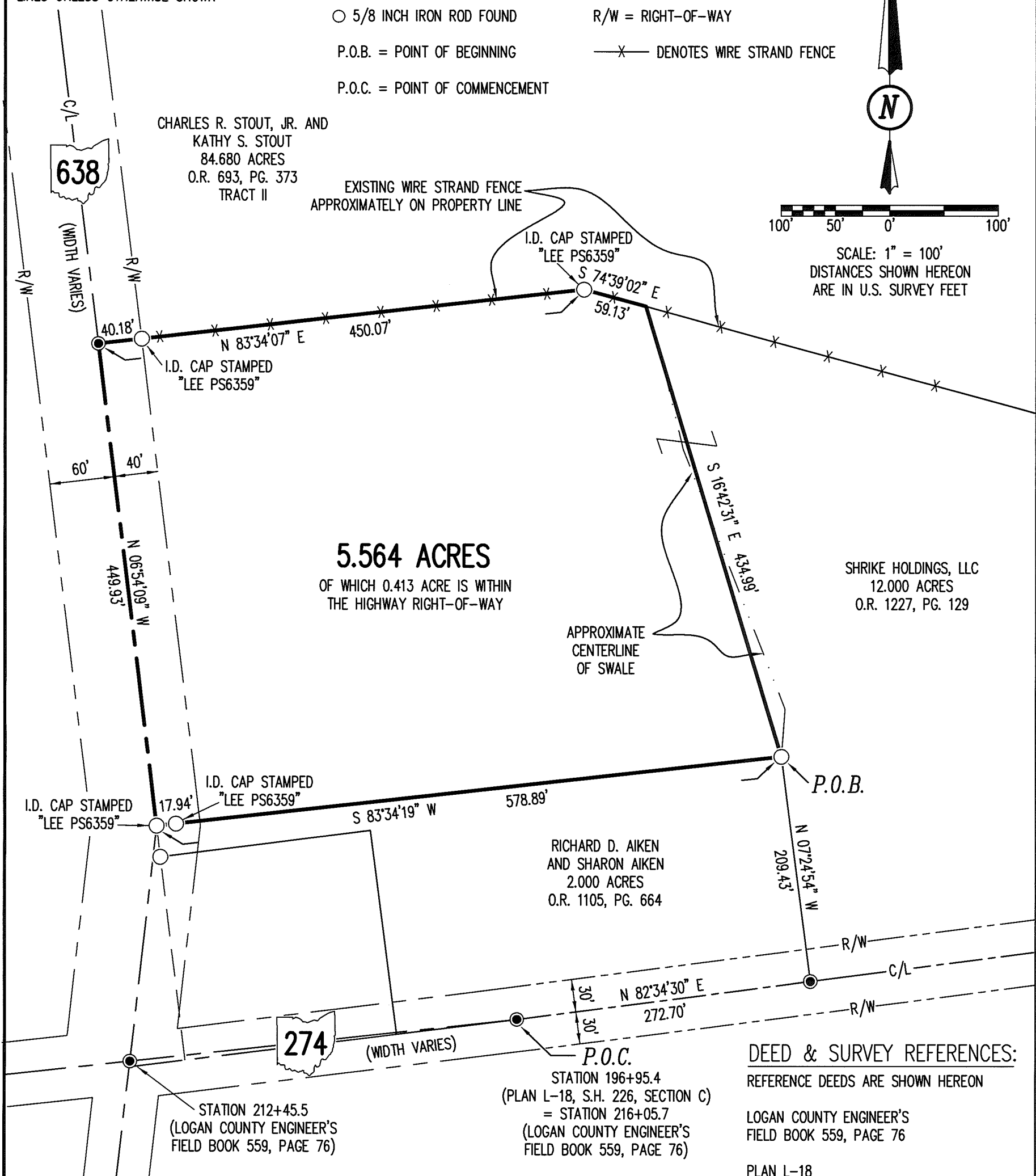


OCCUPATION NOTE:

NO EVIDENCE OF OCCUPATION ALONG BOUNDARY LINES UNLESS OTHERWISE SHOWN

LEGEND:

- MAG NAIL FOUND
- 5/8 INCH IRON ROD FOUND
- P.O.B. = POINT OF BEGINNING
- P.O.C. = POINT OF COMMENCEMENT
- C/L = CENTER-LINE
- R/W = RIGHT-OF-WAY
- X— DENOTES WIRE STRAND FENCE



5.564 ACRES
OF WHICH 0.413 ACRE IS WITHIN THE HIGHWAY RIGHT-OF-WAY

SHRIKE HOLDINGS, LLC
12.000 ACRES
O.R. 1227, PG. 129

RICHARD D. AIKEN
AND SHARON AIKEN
2.000 ACRES
O.R. 1105, PG. 664

DEED & SURVEY REFERENCES:
 REFERENCE DEEDS ARE SHOWN HEREON
 LOGAN COUNTY ENGINEER'S FIELD BOOK 559, PAGE 76
 PLAN L-18
 LOGAN COUNTY ENGINEER'S MAP ROOM FILE 9457

BASIS FOR BEARINGS:

BEARINGS AND DISTANCES, SHOWN HEREON, ARE DERIVED FROM GPS OBSERVATIONS BASED ON GRID NORTH, OHIO STATE PLANE COORDINATE SYSTEM, NORTH ZONE, NAD83 (2011, EPOCH 2010), WITH THE CENTER-LINE OF OHIO ROUTE 274, HAVING A BEARING OF N 82°34'30" E.

THIS SURVEY WAS PREPARED IN THE ABSENCE OF A COMPLETE AND ACCURATE TITLE SEARCH AND DOES NOT GUARANTEE TITLE.

[Signature]
 DANIEL A. NEER
 PROFESSIONAL SURVEYOR NO. 8533
 DECEMBER 19, 2019

COPYRIGHT 2019 BY:

 117 N. Madriver Street Bellefontaine, OH 43311
 (937) 593-7335 www.dlz.com
 Project #1921-2105.00

SURVEY OF 5.564 ACRES
 VIRGINIA MILITARY SURVEY 9932
 McARTHUR TOWNSHIP
 LOGAN COUNTY, OHIO

DRAWN BY:	DESCRIPTION	REV. NO.	DATE
DAN/KSS			1/2/2020

INDEXED ON MAP
9457