

Culp & Hinkle Survey March 31st 1914
 S. E. 1/4 Sec 6, Town 3, R. 13.

STATION. ALIGNMENT. DEFLECTION. REMARKS

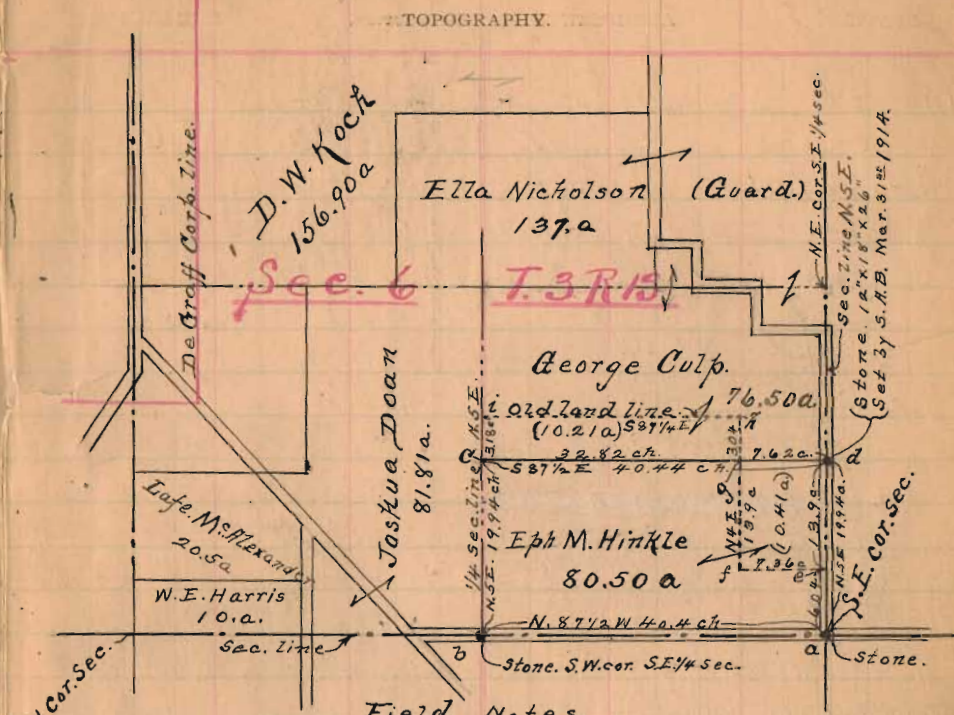
(1) Start at stone cut road S.E. 1/4 Sec 6, E. 1/2 Sec Hinkle.
 Course of E. line Sec 6 N 5 E
 Thence with public road E. 1/2 line Sec 6 N 87 1/2 W
 at Out 2, pins 8 & 67 = 2667 ft
 " 2667' come along S 91 1/2 E. M. Hinkle & SE York Sec
 E. 1/2 Sec 6
 (Come road line N 87 1/2 W Mine = N 5 E)

(2) Start at stone S.E. 1/4 Sec 6, E. 1/2 Sec Hinkle
 Thence with public road E. 1/2 line Hinkle N 5 E
 at 392 1/2 base corner Hinkle E. 1/2 Sec
 (Line Hinkle & Culp from line point N 77 1/2 W. 426 ft
 slow at or end line
 " 1316' set stake for corner between Hinkle & Culp
 in mine fence E. line York Sec Int = 1316

(3) Start at stone in public road S.W. 1/4 Sec 6, E. 1/2 Sec
 Thence with 1/2 line Sec 6 N 5 E 1316 feet to
 at 1316 feet set corner stone 12"x18"x26" with center
 of trail public road East 119 feet
 " 1527

(4) Start at stake in mine fence S. Hinkle & Culp, 1316 ft
 thence with line between Hinkle & Culp S 77 1/2 E
 at 2167 ft East line to M. Hinkle & Mine Culp old line
 " N 5 E Hinkle N 5 E 201' front old cor.
 " 2670 stone in public road mine corner Hinkle & Culp

Culp & Hinkle Survey
 Stationers, St. Louis, Mo. *Ex part Dec 6 Town 3 R 13*



Field Notes.

a = Stone in public road S.E. Cor. Sec. 6, T. 3, R. 13.
 b = " " " " S.W. cor. of S.E. 1/4, Sec. 6.
 c = post in wire fence, cor. Hinkle & Culp, in W. line S.E. 1/4 Sec. 6
 d = Stone 12"x18"x26" " " " " " E. line Sec. 6.
 e, f, h, i = Old land corners, between Hinkle & Culp, abandoned.
 a to b. On Sec. line N 87 1/2 W. 40.40 chains
 b " c " 1/4 " " N. 5 E. 19.94 ch.
 c " d " land line Hinkle & Culp. S 87 1/2 E. 40.44 ch.
 d " a " E. line Sec. 6. S 5 W. 19.94 ch.
 Tract, e, f, g, d, e = 10.41a, sozd by George Culp to Eph. M. Hinkle
 " c, g, h, i, c = 10.21a. " " Eph. M. Hinkle to George Culp.