

Aug. - 7 1935
 F. W. Wright
 J. M. Hartman

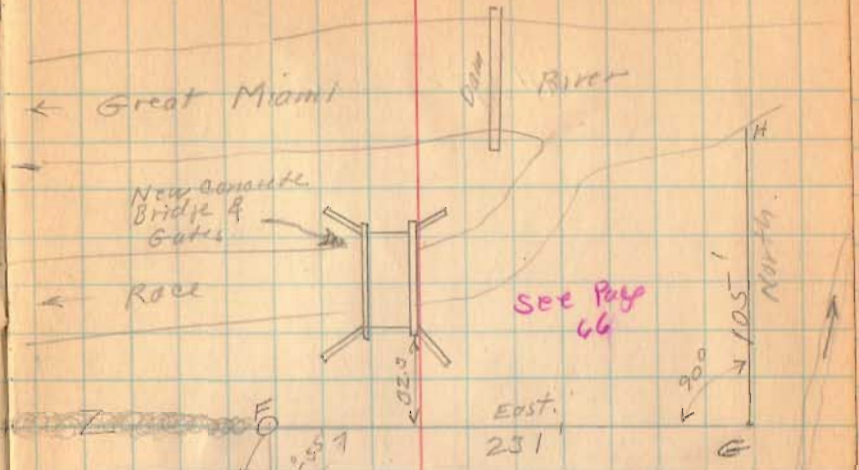
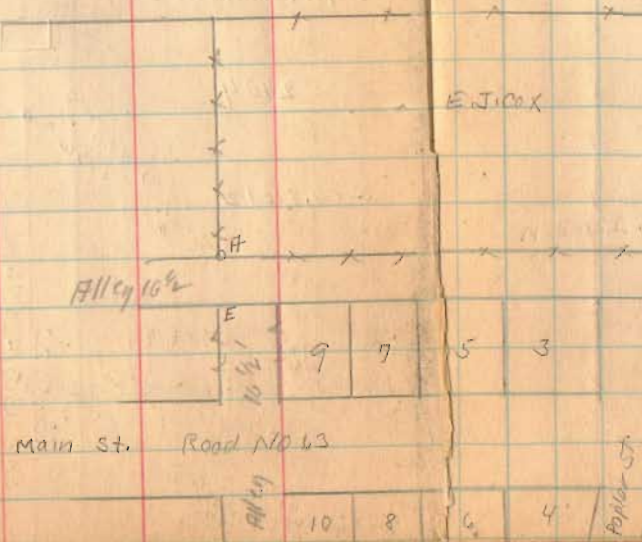
Allinger survey
 Miami Tap.
 sec. 24 T. 3 R. 13

E.D. Measured 337'
 A.B. " 390 1/2'

1677

INDEXED ON MAP

Poplar St. 60'
 Lots 66 X 132



Allinger

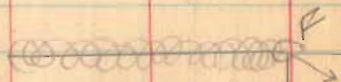
EJOCK

Main St. Road No. 63

Poplar St.

Iron on end see Book 538 Page 37

Allinger Survey



1677

INDEXED ON MAP

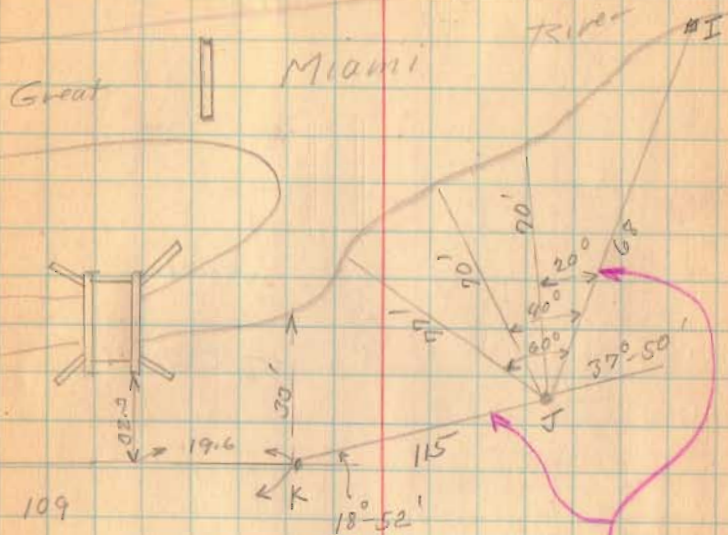
Allinger



EJICOX

8-7-35

62



NOT USED
See Page 66

Allinger survey

These notes taken from field
book at Sidney Highway Dept.
8-7-35.

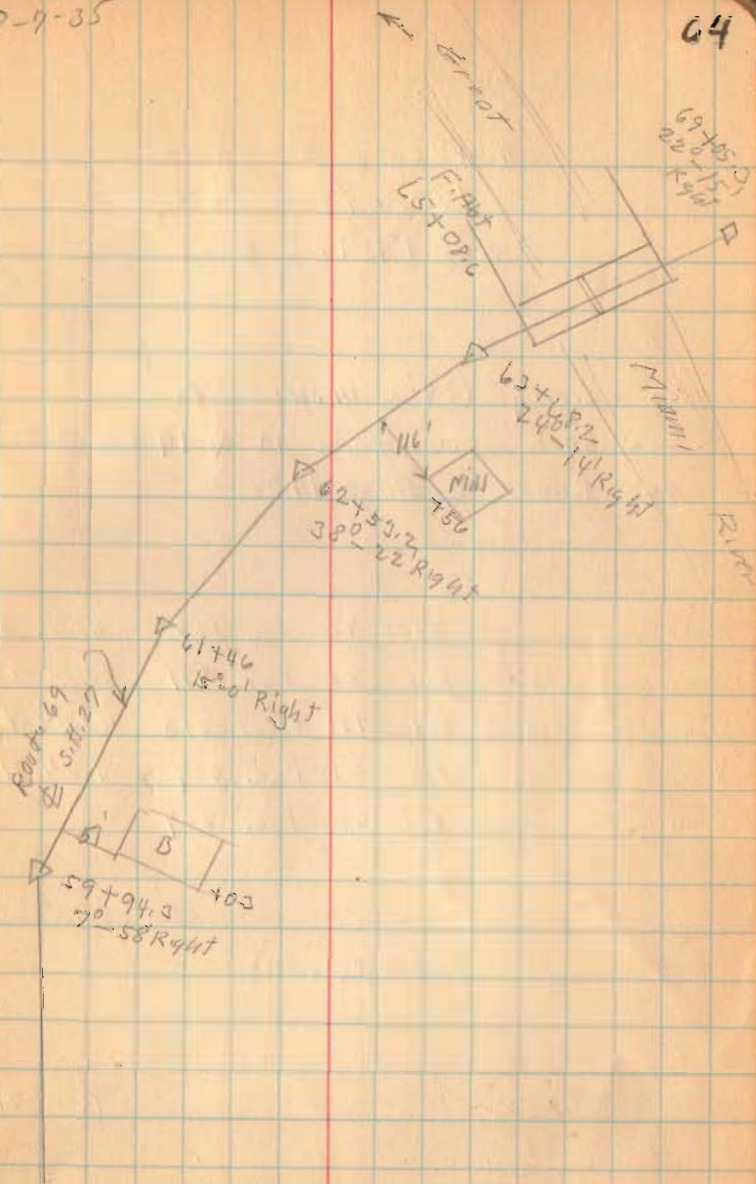
Stationing down the Hill
on old route.

1677

INDEXED ON MAP

8-9-35

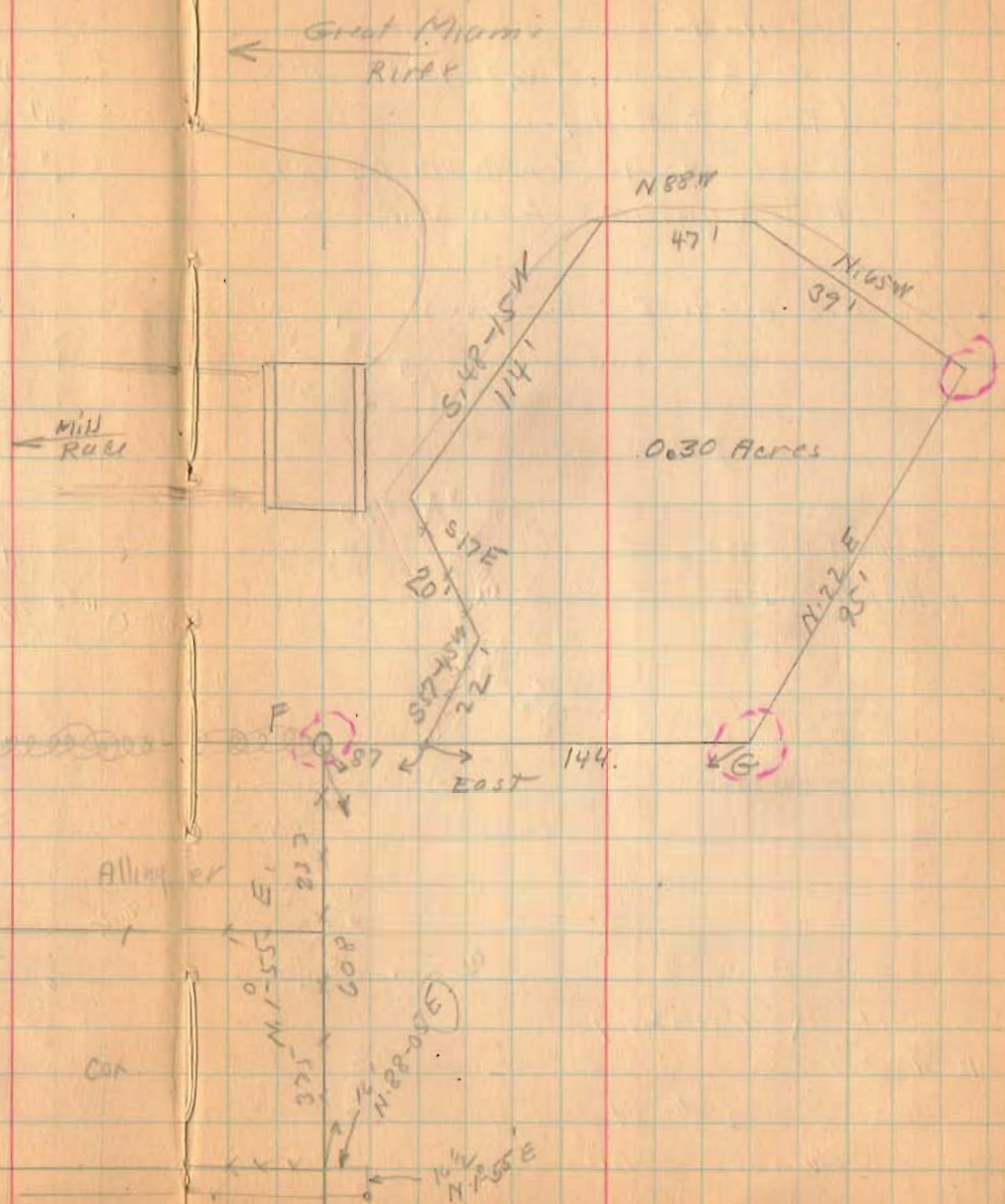
64



(see Page 66)

Allinger Survey

Mr. Allinger says he will set concrete posts at these corners



1677
INDEXED ON MAP