

Road. 11
Miami and Pleasant Twp.

Free Pike Record 2 Page 145

DeGraff - Bellefontaine Pike 1870

Begin stake S.W. Cor., Sec. 1-3-14

50' Except 60' stake ^{920'} 5½ To ^{990'} 7½ = 16 Rods = 264'
Station = 8 Rods.

Road 43 { There are Two 60' stretches
stake 192¾ To 193¾ 16 Rods
stake 251 To 253½ 20 Rods

50' Sta 0+00 To 32+49 Pike Record.
(60 at Hill 264)

60' Sta 32+49 To
Commissioners Journal 5 - Page 167
1837

1798

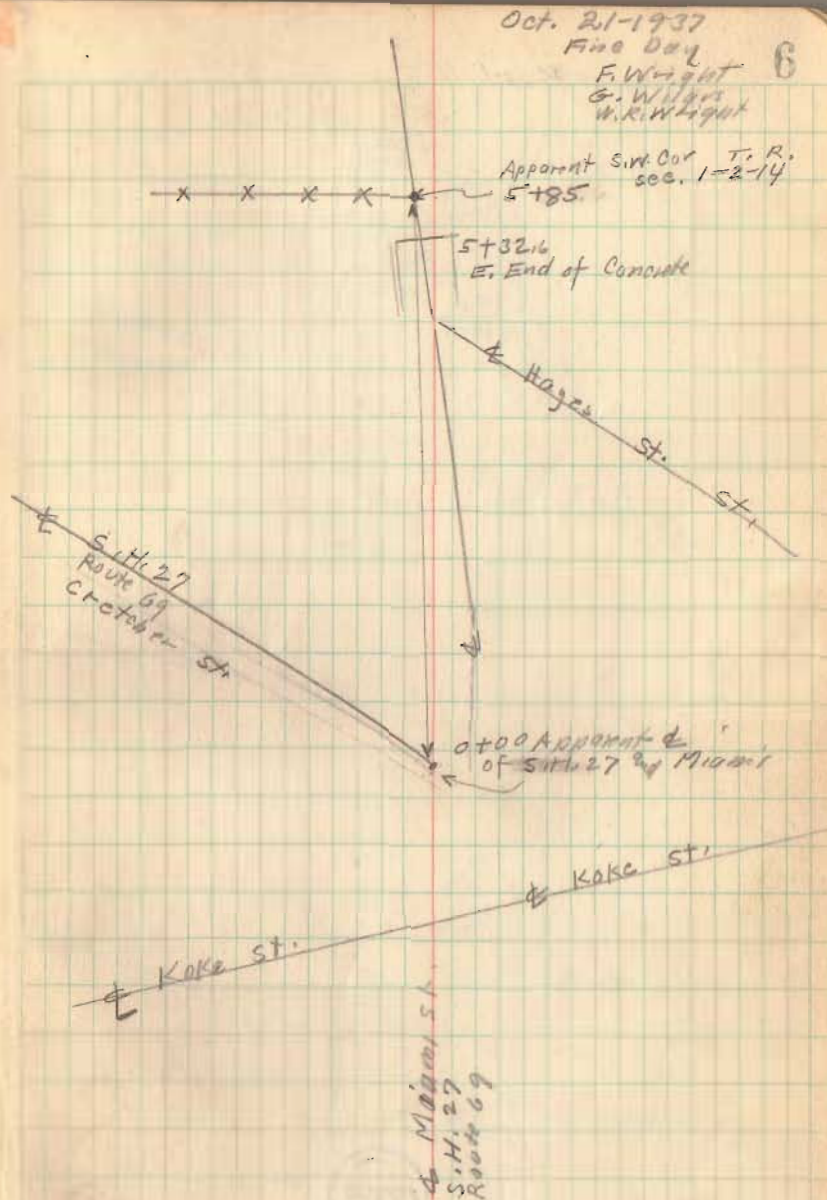
INDEXED ON MAP.

Road 11

Station 0+00 to 5+85
Accurate & Not established
Houses and Buildings not noted

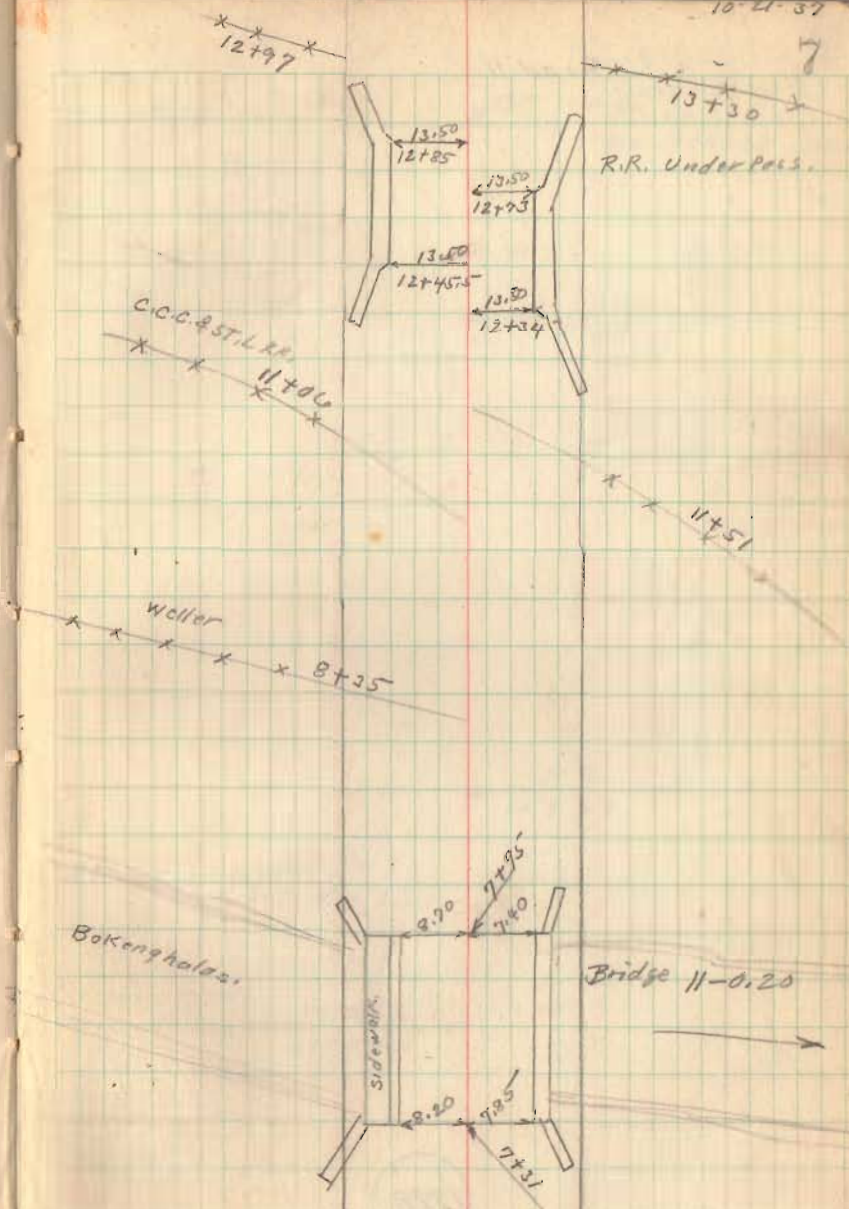
1798

INDEXED ON MAP



Road 11

10-21-37

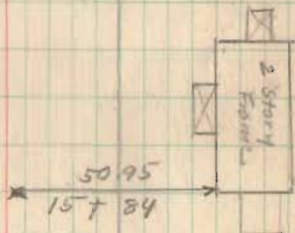
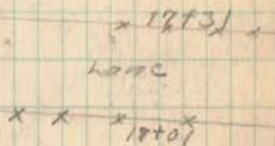
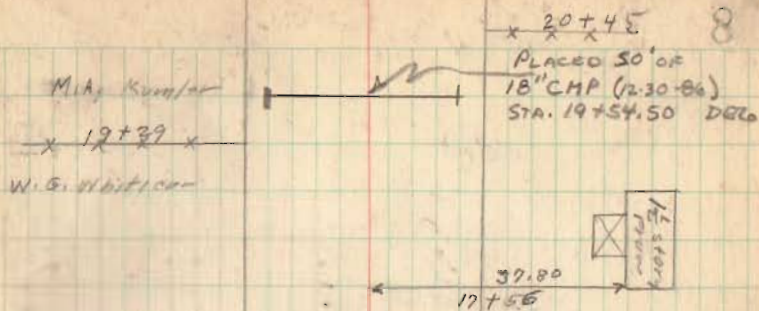


1798

INDEXED ON MAP

Road 11

10-21-32



1798

INDEXED ON MAP

Road 11

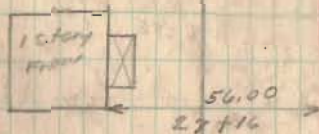
10-21-37

32481

Missie Miller

29789

J.A. SHAW



Geo. Mohr

25+72

M.A. Kuntz

1798

INDEXED ON MAP

Road 11

58+00

52+00

48+00

46+02.94

45+02.34

44+02.34

42+00

39+00

34+00



R/W Posts

Approx 90
Foot Scale

J. Huber

J. Huber

O.W. Loffer

Iron
48+00
20° 53' Right

Iron
46+02.94
36° 17' Right

Iron
45+02.34
23° 50' Right

30.02 30.02

234.0

316.0

316.0

306.5

306.5

63.0

26.70

30.15

33.20

23.70

10' width

10' width

10' width

10' width

10' width

10' width

10' width

10' width

10' width

Sec. 31-3-14

(No Fence)

Sec. 1-3-14

3/4 Iron 18' long
N. End of Tar

Steel
Sec Book
559
Page 65

24" Elm
2' dia

28.40

18.05

62.30

Sec. 36-4-10

Wood Post

000 Timber Pins

Sec. 6-3-13

10' Elm

12' Oak

12' Oak

12' Oak

12' Oak

12' Oak

12' Oak

12' Oak

12' Oak

12' Oak

12' Oak

12' Oak

12' Oak

12' Oak

12' Oak

12' Oak

12' Oak

12' Oak

12' Oak

12' Oak

12' Oak

12' Oak

12' Oak

12' Oak

12' Oak

12' Oak

12' Oak

12' Oak

12' Oak

12' Oak

12' Oak

12' Oak

12' Oak

12' Oak

12' Oak

12' Oak

12' Oak

12' Oak

12' Oak

12' Oak

12' Oak

12' Oak

12' Oak

12' Oak

10

(Sec Book C Page 52)

Road 205

1287.00

339 Sec Book 390-A

Page 86

Ignored Post

54.20

12' Oak

Miller

12' Oak

12' Oak

12' Oak

12' Oak

12' Oak

12' Oak

12' Oak

12' Oak

12' Oak

12' Oak

12' Oak

12' Oak

12' Oak

12' Oak

12' Oak

12' Oak

12' Oak

12' Oak

12' Oak

12' Oak

12' Oak

12' Oak

12' Oak

12' Oak

12' Oak

12' Oak

12' Oak

12' Oak

12' Oak

12' Oak

O.W. Loffer

North
(Needle)

Geo. Moore

000 Post

000 Post

000 Post

000 Post

000 Post

000 Post

000 Post

000 Post

000 Post

000 Post

000 Post

000 Post

000 Post

000 Post

000 Post

000 Post

000 Post

000 Post

000 Post

000 Post

000 Post

10' Elm

10' Elm

10' Elm

10' Elm

10' Elm

10' Elm

10' Elm

10' Elm

10' Elm

10' Elm

10' Elm

10' Elm

10' Elm

10' Elm

10' Elm

10' Elm

10' Elm

10' Elm

10' Elm

10' Elm

10' Elm

10' Elm

10' Elm

10' Elm

10' Elm

Iron
52+49
88

Iron
52+49
88

Iron
52+49
88

Iron
52+49
88

Iron
52+49
88

Iron
52+49
88

Iron
52+49
88

Iron
52+49
88

Iron
52+49
88

Iron
52+49
88

Iron
52+49
88

Iron
52+49
88

Iron
52+49
88

Iron
52+49
88

Iron
52+49
88

Iron
52+49
88

Iron
52+49
88

Iron
52+49
88

Iron
52+49
88

Iron
52+49
88

Iron
52+49
88

Iron
52+49
88

Iron
52+49
88

Mohr Dead
Val. 149-205
Gives 111 Points
(1815 Feet)
An ear to
Angle in
Pike

Mohr Dead
Val. 149-205
Gives 111 Points
(1815 Feet)
An ear to
Angle in
Pike

Mohr Dead
Val. 149-205
Gives 111 Points
(1815 Feet)
An ear to
Angle in
Pike

Mohr Dead
Val. 149-205
Gives 111 Points
(1815 Feet)
An ear to
Angle in
Pike

Mohr Dead
Val. 149-205
Gives 111 Points
(1815 Feet)
An ear to
Angle in
Pike

Mohr Dead
Val. 149-205
Gives 111 Points
(1815 Feet)
An ear to
Angle in
Pike

Mohr Dead
Val. 149-205
Gives 111 Points
(1815 Feet)
An ear to
Angle in
Pike

Mohr Dead
Val. 149-205
Gives 111 Points
(1815 Feet)
An ear to
Angle in
Pike

Mohr Dead
Val. 149-205
Gives 111 Points
(1815 Feet)
An ear to
Angle in
Pike

Mohr Dead
Val. 149-205
Gives 111 Points
(1815 Feet)
An ear to
Angle in
Pike

Mohr Dead
Val. 149-205
Gives 111 Points
(1815 Feet)
An ear to
Angle in
Pike

Mohr Dead
Val. 149-205
Gives 111 Points
(1815 Feet)
An ear to
Angle in
Pike

Mohr Dead
Val. 149-205
Gives 111 Points
(1815 Feet)
An ear to
Angle in
Pike

Mohr Dead
Val. 149-205
Gives 111 Points
(1815 Feet)
An ear to
Angle in
Pike

Mohr Dead
Val. 149-205
Gives 111 Points
(1815 Feet)
An ear to
Angle in
Pike

Mohr Dead
Val. 149-205
Gives 111 Points
(1815 Feet)
An ear to
Angle in
Pike

Mohr Dead
Val. 149-205
Gives 111 Points
(1815 Feet)
An ear to
Angle in
Pike

Mohr Dead
Val. 149-205
Gives 111 Points
(1815 Feet)
An ear to
Angle in
Pike

Mohr Dead
Val. 149-205
Gives 111 Points
(1815 Feet)
An ear to
Angle in
Pike

Mohr Dead
Val. 149-205
Gives 111 Points
(1815 Feet)
An ear to
Angle in
Pike

Mohr Dead
Val. 149-205
Gives 111 Points
(1815 Feet)
An ear to
Angle in
Pike

Mohr Dead
Val. 149-205
Gives 111 Points
(1815 Feet)
An ear to
Angle in
Pike

Mohr Dead
Val. 149-205
Gives 111 Points
(1815 Feet)
An ear to
Angle in
Pike

Iron
52+49
88

Iron
52+49
88

Iron
52+49
88

Iron
52+49
88

Iron
52+49
88

Iron
52+49
88

Iron
52+49
88

Iron
52+49
88

Iron
52+49
88

Iron
52+49
88

Iron
52+49
88

Iron
52+49
88

Iron
52+49
88

Iron
52+49
88

Iron
52+49
88

Iron
52+49
88

Iron
52+49
88

Iron
52+49
88

Iron
52+49
88

Iron
52+49
88

Iron
52+49
88

Iron
52+49
88

Iron
52+49
88

Iron
52+49
88

Iron
52+49
88

Iron
52+49
88

Iron
52+49
88

Iron
52+49
88

Iron
52+49
88

Iron
52+49
88

Iron
52+49
88

Iron
52+49
88

Iron
52+49
88

Iron
52+49
88

Iron
52+49
88

Iron
52+49
88

Iron
52+49
88

Iron
52+49
88

Iron
52+49
88

Iron
52+49
88

Iron
52+49
88

Iron
52+49
88

Iron
52+49
88

Iron
52+49
88

Iron
52+49
88

Iron
52+49
88

Iron
52+49
88

Iron
52+49
88

Iron
52+49
88

Iron
52+49
88

Road 11

71+91

68+00

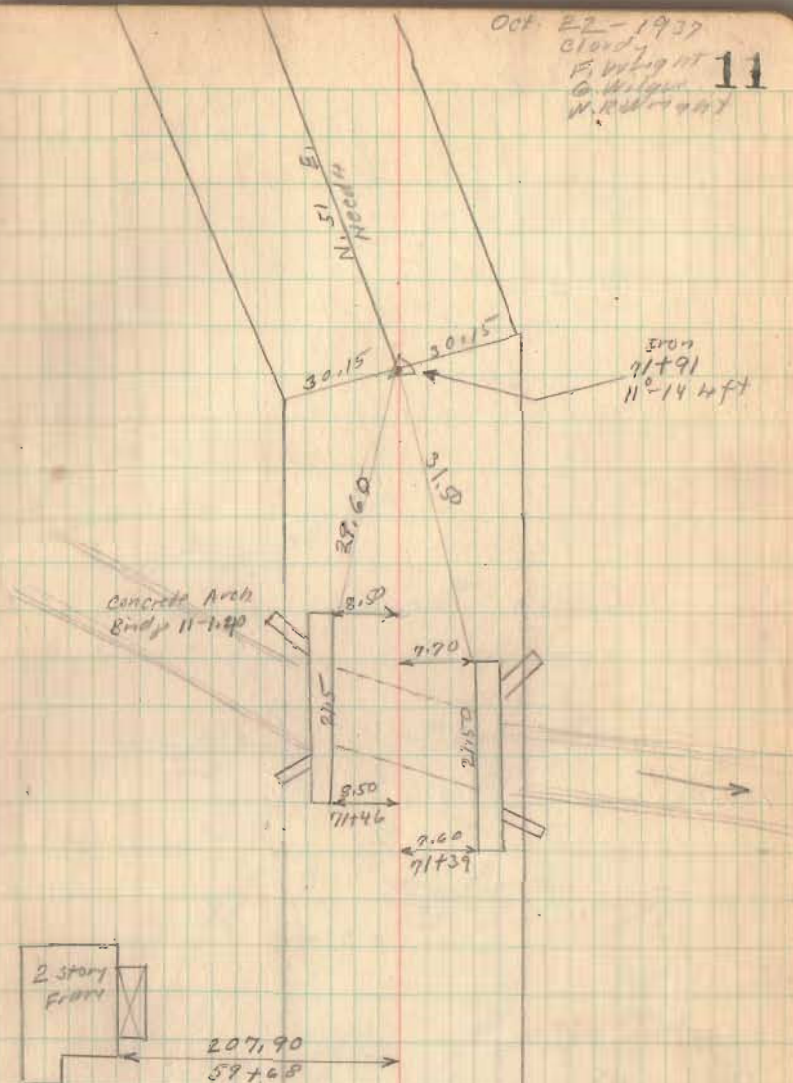
63+00

1798

INDEXED ON MAP

Oct. 22 - 1937
Cloudy
E. Wright
G. Wilson
W. R. ...

11



Road 11

Cooke Survey

Jan. 13, 1965

D. Dodson
L. Geeslin

82+50

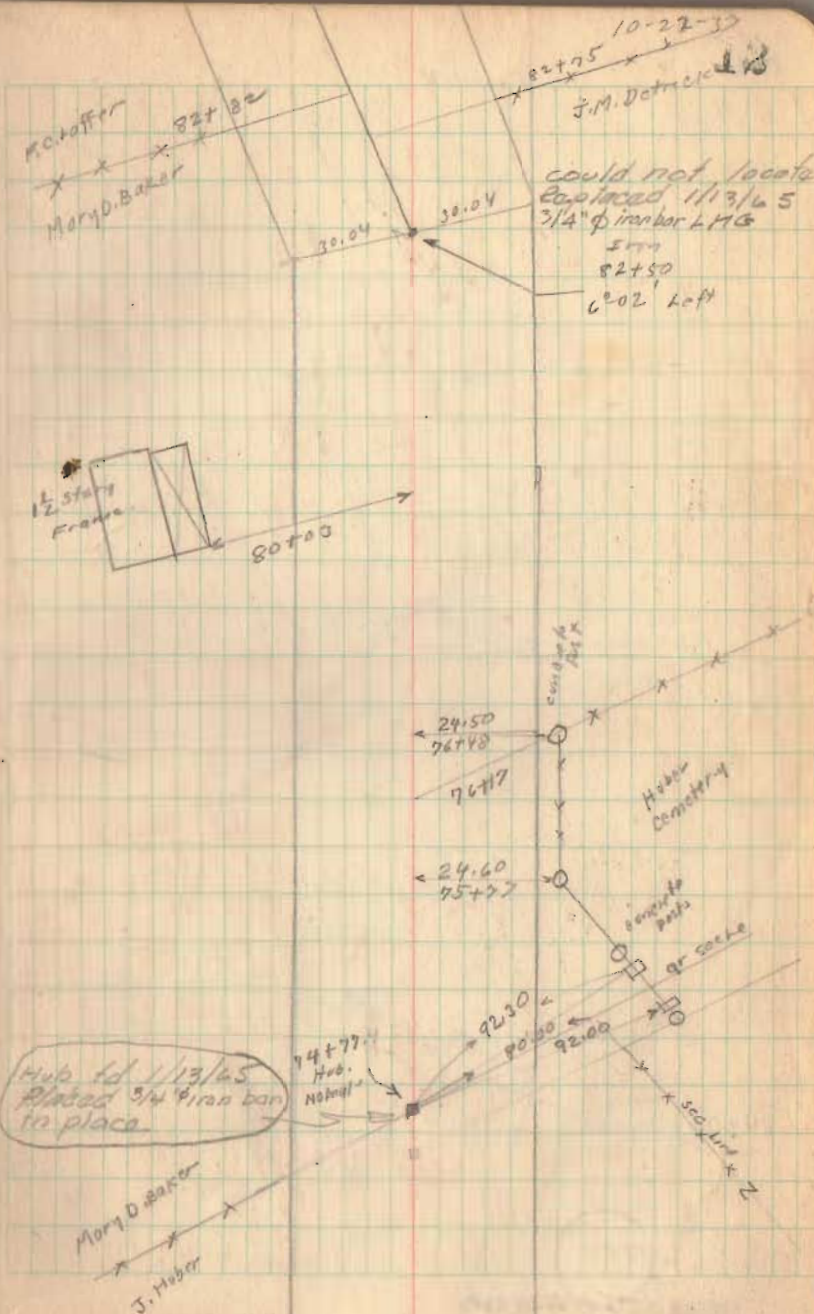
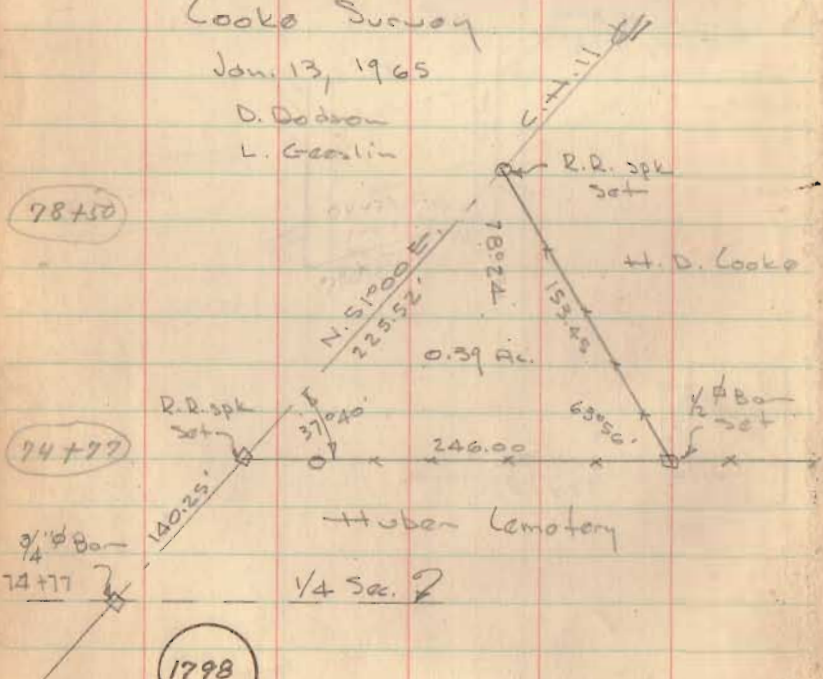
78+50

74+77

74+77

1798

INDEXED ON MAP



Hub Id 11/13/65
Placed 3/4\"/>

Road 11

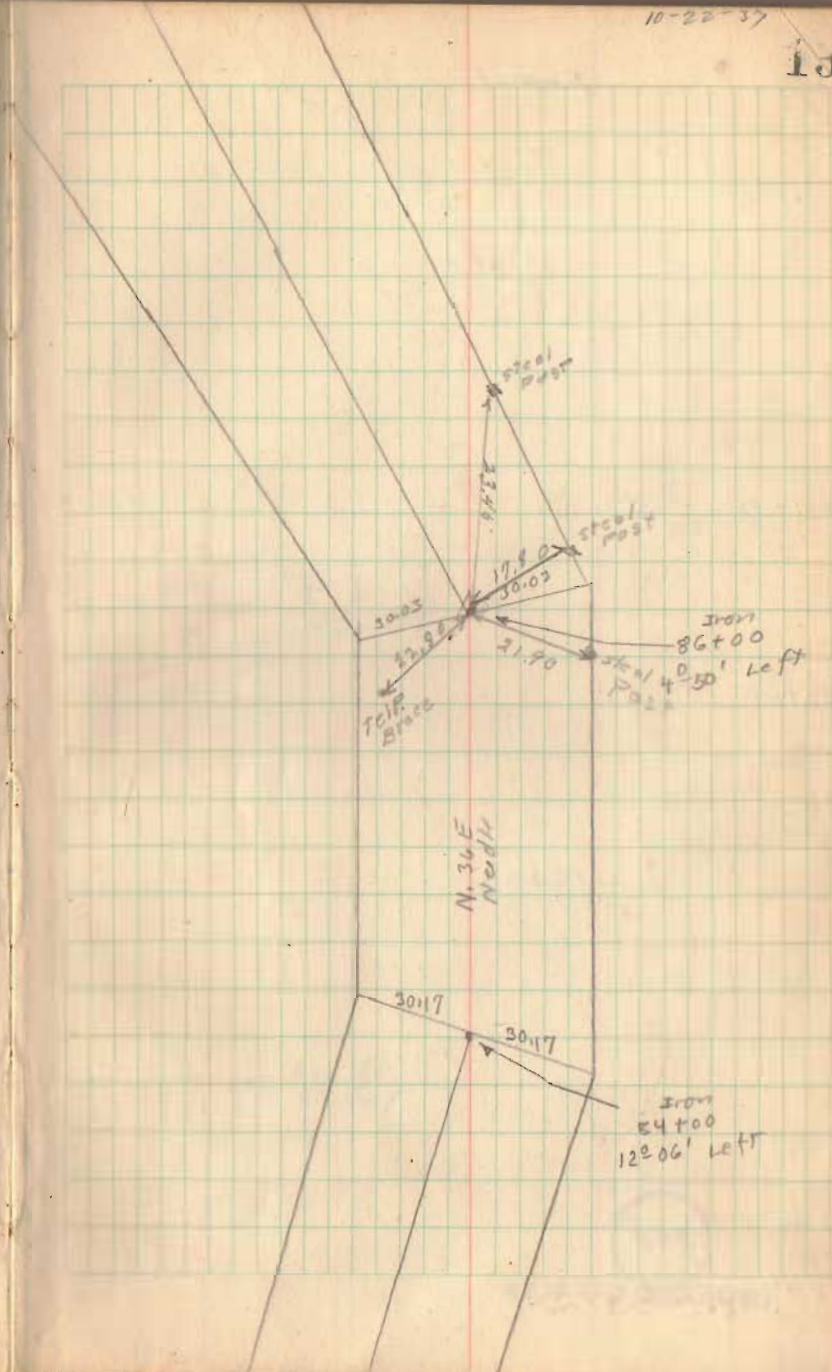
10-22-37

13

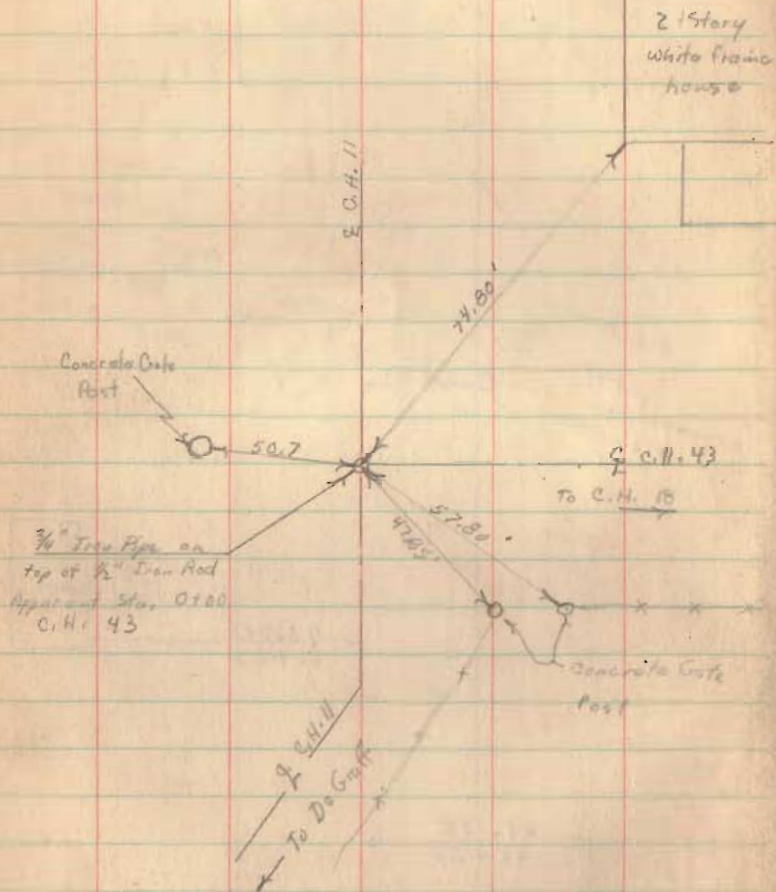
84+00

1798

INDEXED ON MAP



Road 11



179B

INDEXED ON MAP

10-22-37

15

