

FB 699

C. H. Co. A
Miami Twp.

Sta. Perry Twp - Shelby Co.
Stakes set 30' R. & Lt. of $\frac{1}{4}$
for 60' R/W

0+00 Hubs set for Mon. - spk on $\frac{1}{4}$

1+00 Hubs set for Mon. - spk on $\frac{1}{4}$

0+00 Iron pin set on line between Iron
& C.H. 70 & Stone $\frac{1}{4}$ 32.706
& on North R/W line of C.C. 4212

Indexed

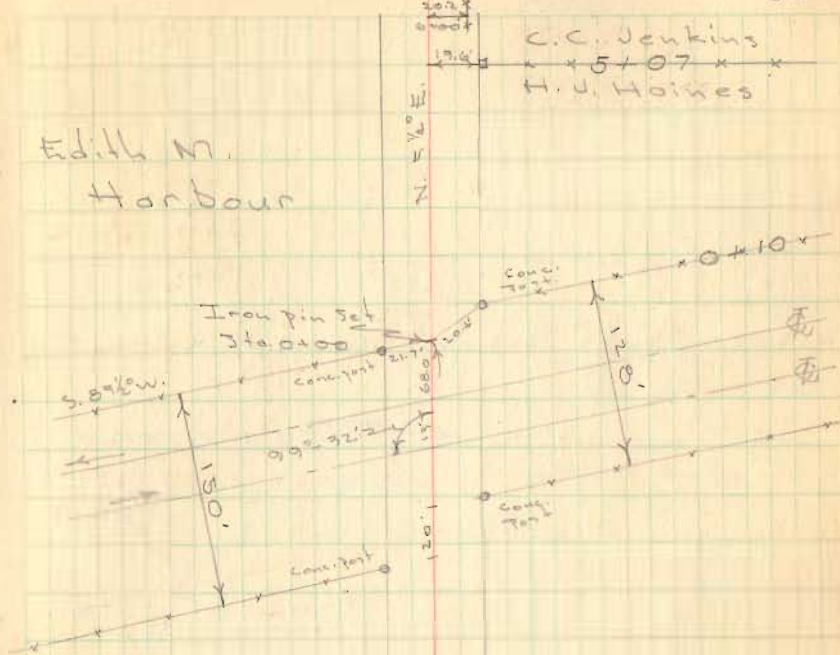
D. Dodson
T. Richardson

F. Webster
D. Craig

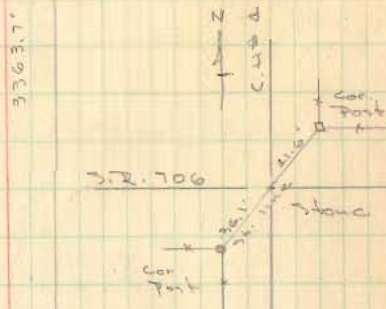
Aug. 10, 1945
Cloudy

59

Edith M.
Harbour



C. C. Jenkins
5707
H. U. Hoines



3451

S.F. # 706
See P.B. # 596
pp. 45

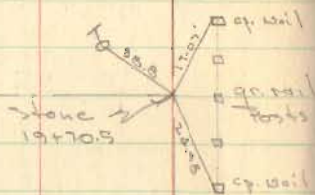
Stone & Brick
Found

FB 699

C. H. No 4
Miami Twp.

21+00 Hubs Set for Man's - spk on R

← To Pemberton



10+00 Hubs Set for Man's - spk on R



11+00 Hubs Set for Man's - spk on R

Aug. 11, 1955
cloudy cool 60

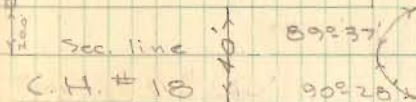
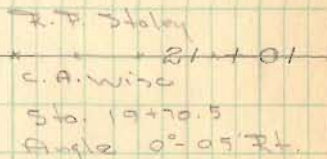
Sec. 6 T-2 R-13

Co.

O.T. # 11A

For

N. 5 1/2° E.



Iron over Stone
(Pointed Granite, drill hole in top)

Co.

SHELBY

Sec. 35, T-3 R-13

*Iron Found
Sta. 15+32.1
No angle

C. H. # 70

Sec. 5 T-2 R-13

N. 5 1/2° E.

LOGAN

11+00

FB 699

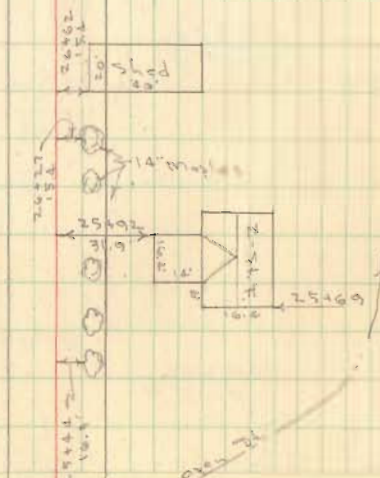
C. H. No. 4
Miami Twp.

29+50 Hubs Set for Monis. - 7pk. on S

O. V. & A. E. Fry

Sta 27+37.50
Dig large hole
No luck

H. Z. Staley
Sec. line
R. P. Staley



FB 699

C. H. Co. A

60+00 Hubs Set for Mon. 7pk on Φ

55+00 Hubs Set for Mon. 7pk on Φ

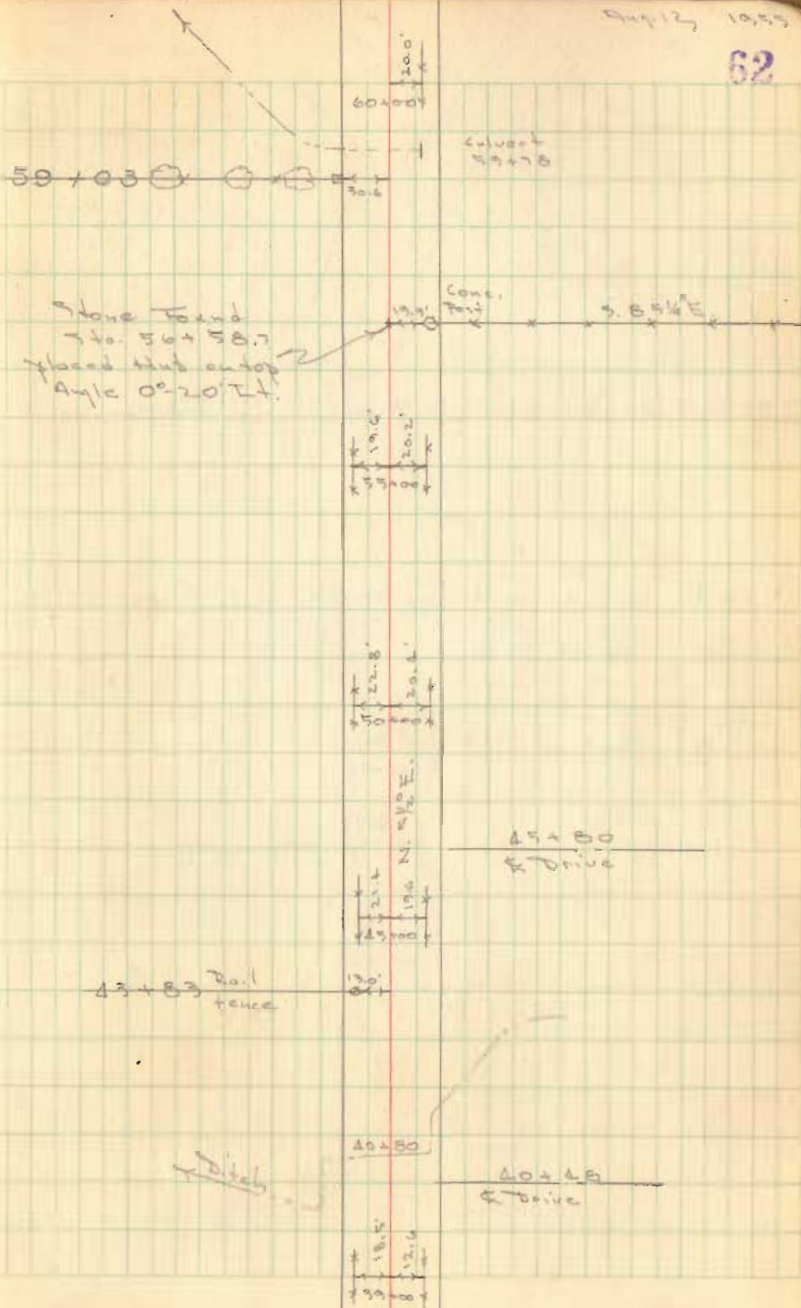
50+00 Hubs Set for Mon. 7pk on Φ

45+00 Hubs Set for Mon. 7pk on Φ

39+00 Hubs Set for Mon. 7pk on Φ

Aug 13, 1955

62



FB 699

80+14.3 Hubs set for Mon's. $\frac{3}{4}$ " Iron on Φ

77+49.7 Hubs set for Mon's. $\frac{3}{4}$ " Iron on Φ

71+50 Hubs set for Mon's. spk on Φ

65+00 Hubs set for Mon's. spk on Φ

Dedron
Richardson
Craig
Saw's Brother

Sta. 81+46.5
S. end of Bridge

Aug. 15, 1959
80° 63

