

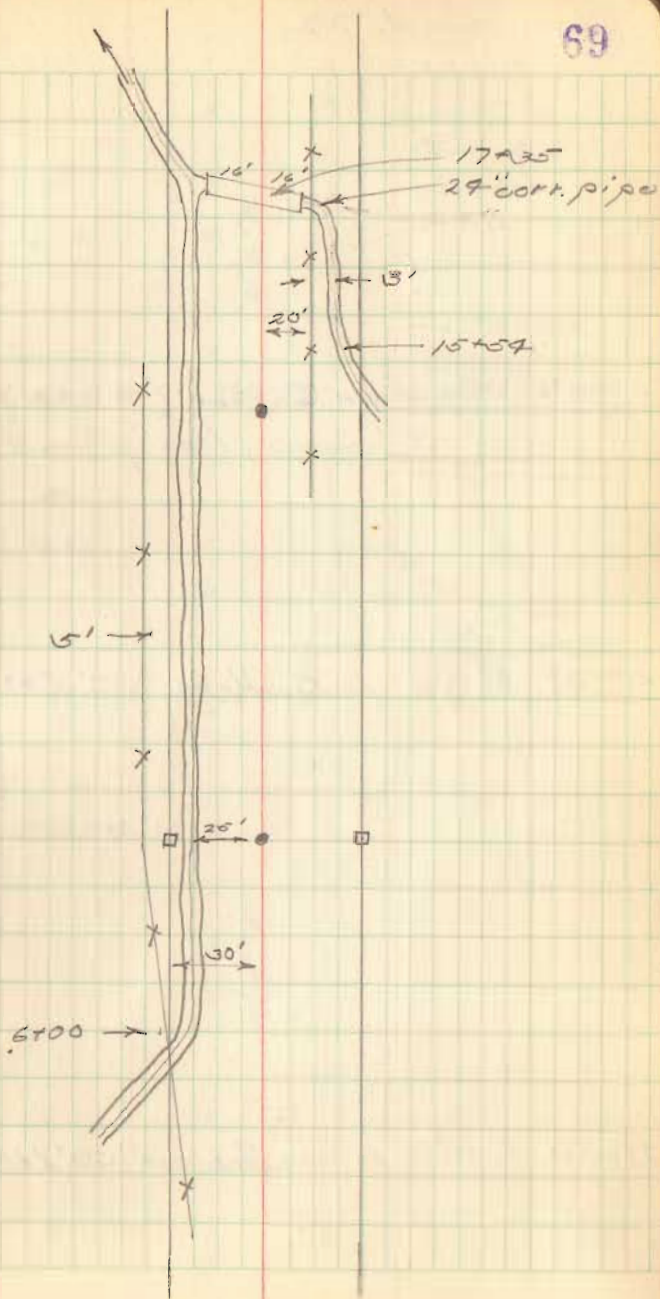
FB 700

C.H. 72

15+00 R.R.S. in E, Hub set 30' Rt. & Lt.

8+00 R.R.S. in E, Hub set 30' Rt. & Lt.

69



27+07 Section Corner (stone found)
(18" deep, iron placard on top)

25+00 R.R.S. in E, Hub set 30' L+8 ft.

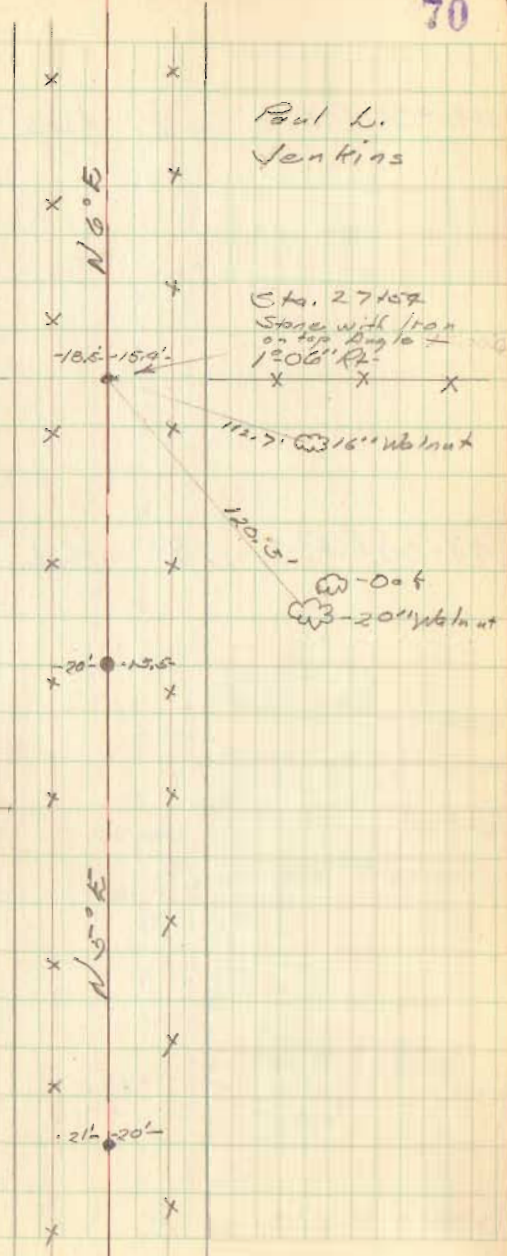
21+00 R.R.S. in E, Hub set 30' L+8 ft.

Harry E.
Glett

Paul L.
Jenkins

Carl E.
Wilkinson

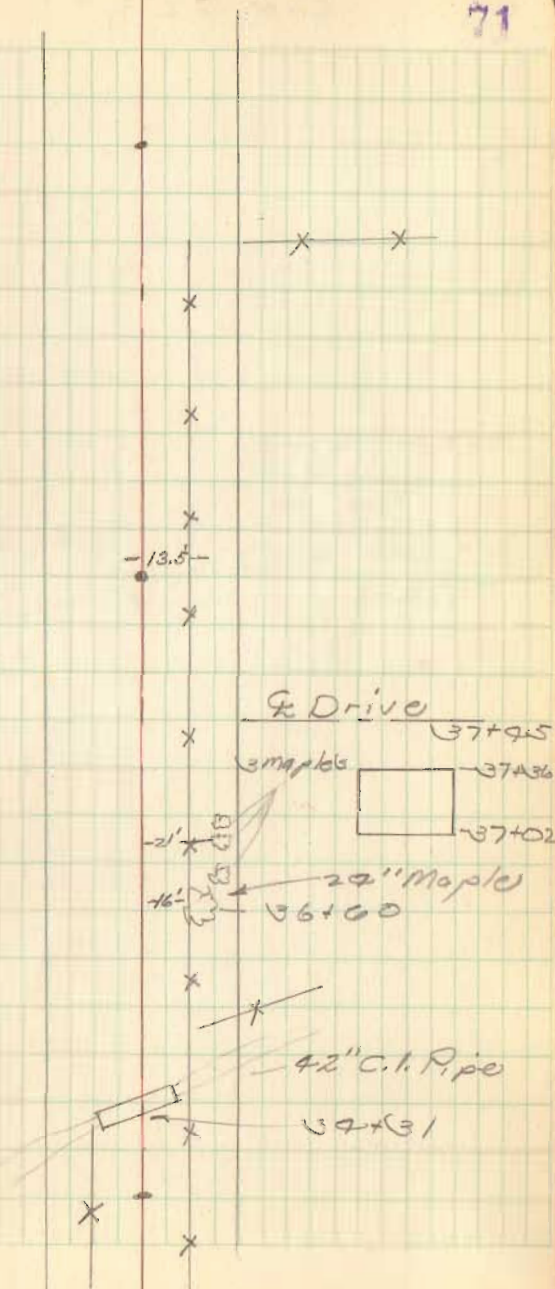
E Drive 23+84



48+00 R.P.S. in R Hubs (30' Lt. & Rt.)

41+00 R.P.S. in R Hubs (30' Lt. & Rt.)

33+00 R.P.S. on G



C.H. 72

FB 700

72

Star 5446.2
Hub found
Iron set
T.R. → 0.530
152.9' 14" Walnut
C.H. #71