

NO.	GRANTOR	DATE	RECORD	CUST No	REMARKS
1	M. F. KIRBY	Mar 14 1893	Bk 608 Pg 34 A B	27	
2	J. N. GISH	Mar 14 1893	Bk 608 Pg 34 A B	27	
3	J. N. GISH	Mar 14 1893	Bk 608 Pg 34 A B	27	
4	J. N. GISH	Mar 14 1893	Bk 608 Pg 34 A B	27	
5	J. N. GISH	Mar 14 1893	Bk 608 Pg 34 A B	27	
6	J. N. GISH	Mar 14 1893	Bk 608 Pg 34 A B	27	
7	J. N. GISH	Mar 14 1893	Bk 608 Pg 34 A B	27	
8	J. N. GISH	Mar 14 1893	Bk 608 Pg 34 A B	27	
9	J. N. GISH	Mar 14 1893	Bk 608 Pg 34 A B	27	
10	J. N. GISH	Mar 14 1893	Bk 608 Pg 34 A B	27	
11	J. N. GISH	Mar 14 1893	Bk 608 Pg 34 A B	27	
12	J. N. GISH	Mar 14 1893	Bk 608 Pg 34 A B	27	
13	J. N. GISH	Mar 14 1893	Bk 608 Pg 34 A B	27	
14	J. N. GISH	Mar 14 1893	Bk 608 Pg 34 A B	27	
15	J. N. GISH	Mar 14 1893	Bk 608 Pg 34 A B	27	
16	J. N. GISH	Mar 14 1893	Bk 608 Pg 34 A B	27	



Kind of Fence	West Side	East Side	Remarks
48" Woven Wire	9504+00 to 9520+00	9520+00 to 9530+00	West Post
36" Woven Wire	9520+00 to 9530+00	9530+00 to 9540+00	West Post
36" Woven Wire	9540+00 to 9550+00	9550+00 to 9560+00	West Post
36" Woven Wire	9560+00 to 9570+00	9570+00 to 9580+00	West Post
36" Woven Wire	9580+00 to 9590+00	9590+00 to 9600+00	West Post

SHELBY CO. OHIO.
SALEM TWP.
LOGAN CO. OHIO.
PLEASANT TWP.

Revised
City of Toledo
June 2, 1937
June 2, 1937

RIGHT OF WAY AND TRACK MAP
DETROIT, TOLEDO & IRONTON R.R.
Station 3504+00 To Station 3609+00
SCALE 1" = 200 FT. JUNE 20, 1938
OFFICE OF CHIEF ENGINEER

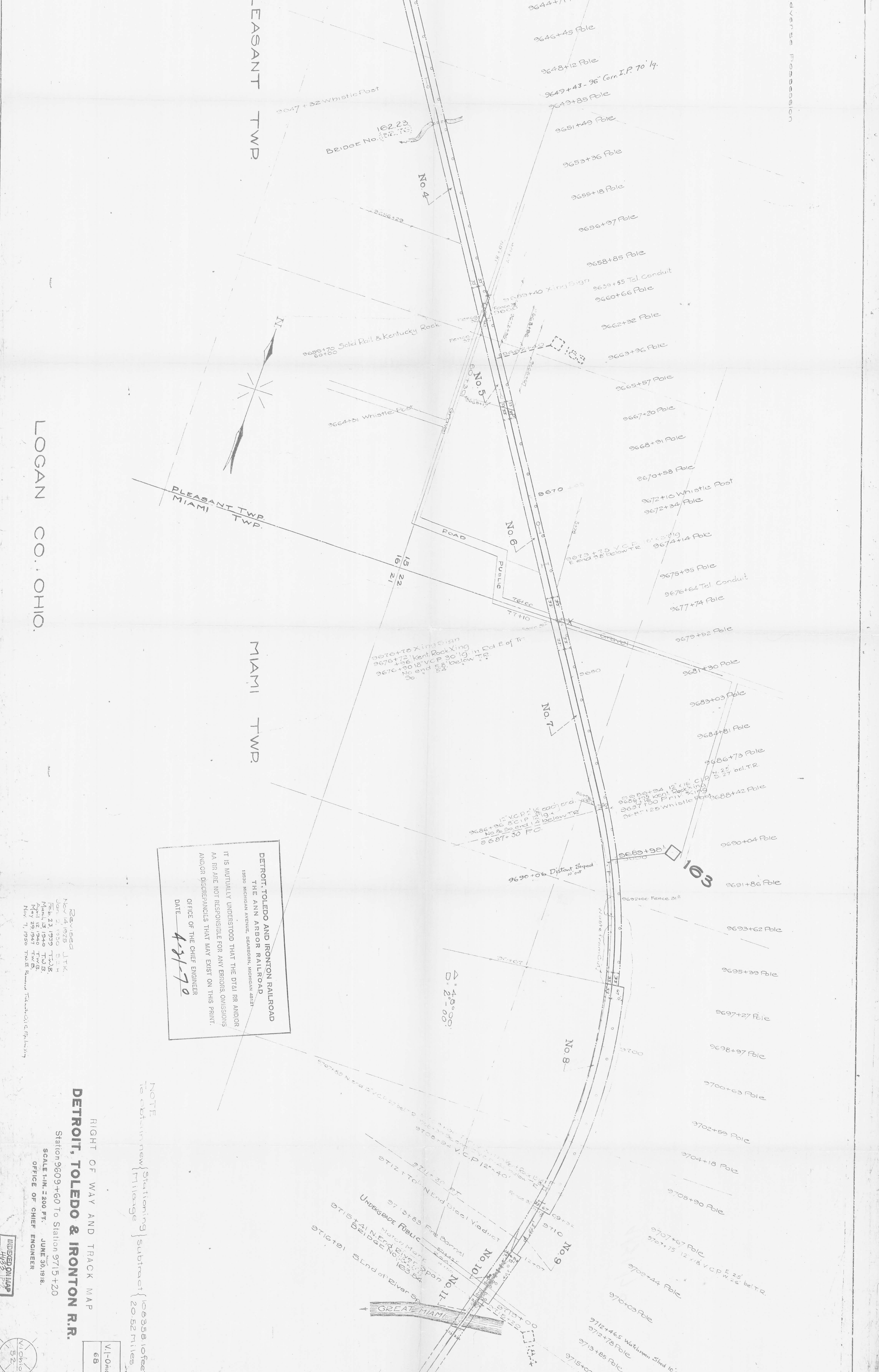
NOTE: Stationing subtract 10835.0 ft. to obtain new mileage 2052 miles

DETROIT TOLEDO AND IRONTON RAILROAD
THE ANN ARBOR RAILROAD
18200 MICHIGAN AVENUE, SANDUSKY, MICHIGAN 44871
IT IS MUTUALLY UNDERSTOOD THAT THE DTLR RR AND/OR
AA RR ARE NOT RESPONSIBLE FOR ANY ERRORS, OMISSIONS
AND/OR DISCREPANCIES THAT MAY EXIST ON THIS PRINT.
OFFICE OF THE CHIEF ENGINEER
DATE 4-21-70



GRANTOR	GRANTEE	INSTRUMENT DATE	RECORD	CUSTNO	REMARKS
Logan Co.	Warrant	1893	1893	29	Parcel No. 5
Logan Co.	Warrant	1893	1893	27	
Logan Co.	Warrant	1893	1893	26	
Logan Co.	Warrant	1893	1893	25	
Logan Co.	Warrant	1893	1893	24	
Logan Co.	Warrant	1893	1893	23	
Logan Co.	Warrant	1893	1893	22	
Logan Co.	Warrant	1893	1893	21	
Logan Co.	Warrant	1893	1893	20	
Logan Co.	Warrant	1893	1893	19	

Kind of Fence	Years	Fence Schedule	Side
4" x 6" V. C. P.	907	1830	1830
4" x 6" V. C. P.	908	1830	1830
4" x 6" V. C. P.	909	1830	1830
4" x 6" V. C. P.	910	1830	1830
4" x 6" V. C. P.	911	1830	1830
4" x 6" V. C. P.	912	1830	1830
4" x 6" V. C. P.	913	1830	1830
4" x 6" V. C. P.	914	1830	1830
4" x 6" V. C. P.	915	1830	1830
4" x 6" V. C. P.	916	1830	1830
4" x 6" V. C. P.	917	1830	1830
4" x 6" V. C. P.	918	1830	1830
4" x 6" V. C. P.	919	1830	1830
4" x 6" V. C. P.	920	1830	1830

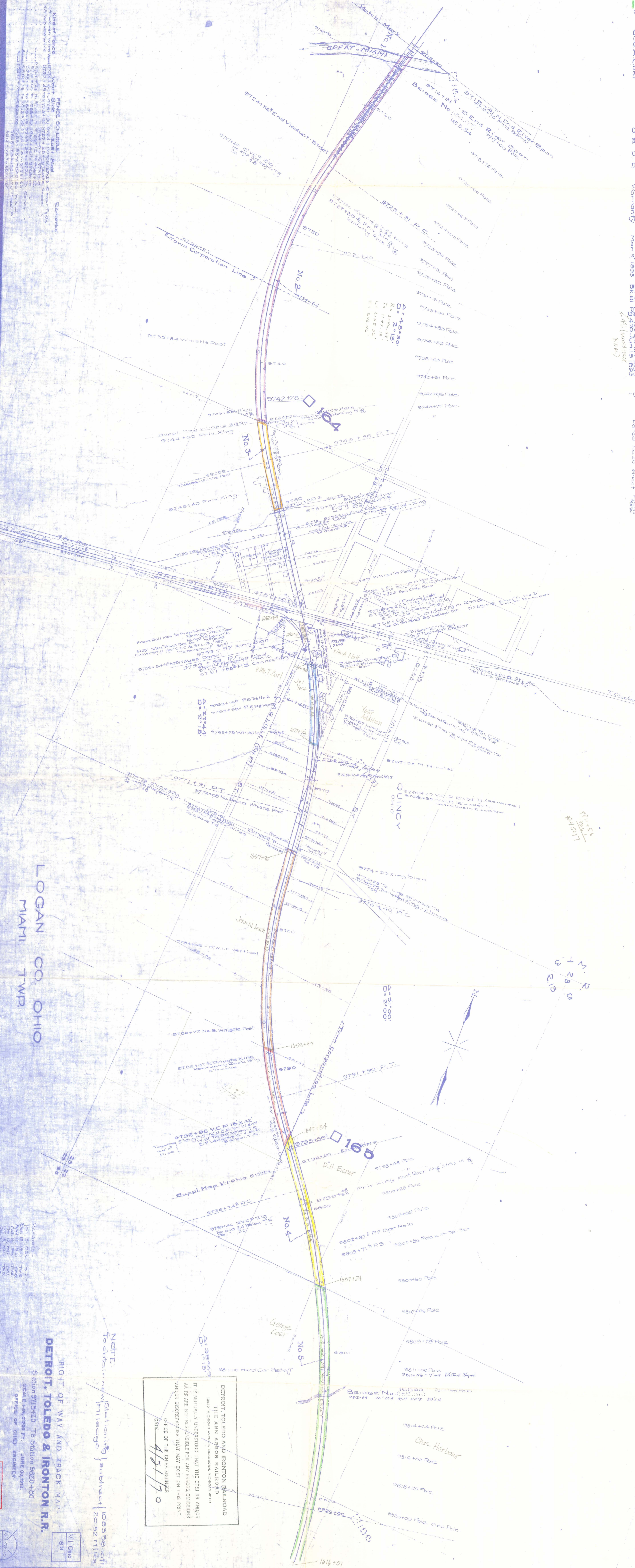


DETROIT TOLEDO AND IRONTON RAILROAD
 THE ANN ARBOR RAILROAD
 18300 Michigan Avenue, Dearborn, Michigan 48123
 IT IS MUTUALLY UNDERSTOOD THAT THE DT&I RR AND/OR
 AA RR ARE NOT RESPONSIBLE FOR ANY ERRORS, OMISSIONS
 AND/OR DISCREPANCIES THAT MAY EXIST ON THIS PRINT.
 OFFICE OF THE CHIEF ENGINEER
 DATE: **4-21-70**

NOTE
 To obtain new Stationing subtract 10005810 feet
 from the stationing on this map.

RIGHT OF WAY AND TRACK MAP
DETROIT, TOLEDO & IRONTON R.R.
 Station 9609+60 To Station 9715+20
 SCALE: H.W. = 200 FT. JUNE 30, 1968.
 OFFICE OF CHIEF ENGINEER

INDEXED MAP 68
 V.L. Ohio
 52



FENCE SCHEDULE
 Kind of Fence
 Height
 Material
 Post Length
 Spacing
 Gate
 Remarks

NOTE:
 Stationing subtract { 108358.10ft }
 To obtain new mileage { 2052.2 miles }

DETROIT TOLEDO AND IRONTON RAILROAD
 THE ANN AYBORN RALLOKOP
 13200 MICHIGAN AVENUE, DETROIT, MICHIGAN 48221
 IT IS NATURALLY UNDERSTOOD THAT THE DT&I RR AND/OR
 AA RR ARE NOT RESPONSIBLE FOR ANY ERRORS, OMISSIONS
 AND/OR DISCREPANCIES THAT MAY EXIST ON THIS PRINT.
 OFFICE OF THE CHIEF ENGINEER
 DATE 4/31/70

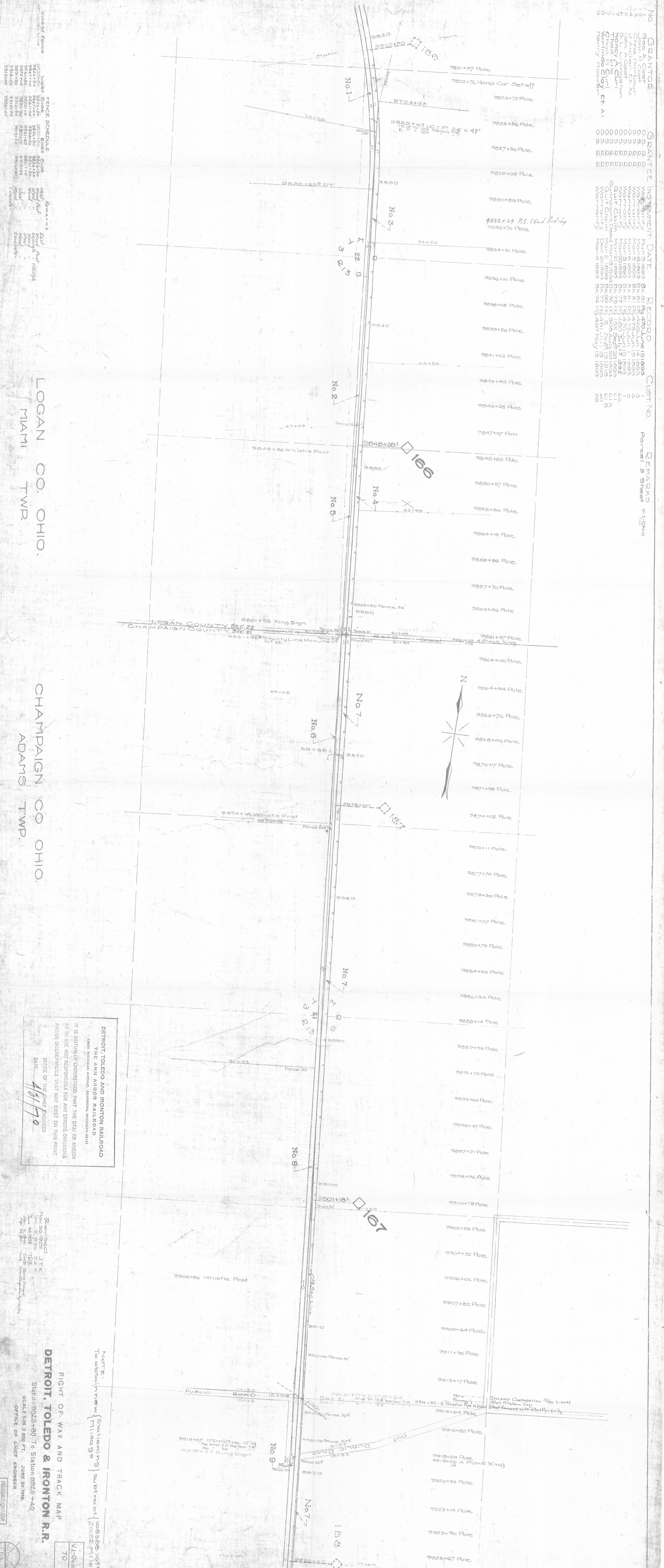
LOGAN CO. OHIO
MIAMI TWP.

RIGHT OF WAY AND TRACK MAP
DETROIT, TOLEDO & IRONTON R.R.
 Station 9715+20 To Station 9820+00
 SCALE 1/4" = 250 FT. JUNE 30, 1970
 OFFICE OF CHIEF ENGINEER

DETROIT TOLEDO AND IRONTON RAILROAD
 THE ANN AYBORN RALLOKOP
 13200 MICHIGAN AVENUE, DETROIT, MICHIGAN 48221
 IT IS NATURALLY UNDERSTOOD THAT THE DT&I RR AND/OR
 AA RR ARE NOT RESPONSIBLE FOR ANY ERRORS, OMISSIONS
 AND/OR DISCREPANCIES THAT MAY EXIST ON THIS PRINT.
 OFFICE OF THE CHIEF ENGINEER
 DATE 4/31/70

V.L.-Ohio
 69

No.	GRANTOR	INSTRUMENT	DATE	RECORD	CUST. NO.
1	Geo. A. Covert	Warrant	June 15 1893	Bk 61 Pg 470	1
2	Geo. A. Covert	Warrant	June 15 1893	Bk 61 Pg 470	2
3	Geo. A. Covert	Warrant	June 15 1893	Bk 61 Pg 470	3
4	Geo. A. Covert	Warrant	June 15 1893	Bk 61 Pg 470	4
5	Geo. A. Covert	Warrant	June 15 1893	Bk 61 Pg 470	5
6	Geo. A. Covert	Warrant	June 15 1893	Bk 61 Pg 470	6
7	Geo. A. Covert	Warrant	June 15 1893	Bk 61 Pg 470	7
8	Geo. A. Covert	Warrant	June 15 1893	Bk 61 Pg 470	8
9	Geo. A. Covert	Warrant	June 15 1893	Bk 61 Pg 470	9
10	Geo. A. Covert	Warrant	June 15 1893	Bk 61 Pg 470	10
11	Geo. A. Covert	Warrant	June 15 1893	Bk 61 Pg 470	11
12	Geo. A. Covert	Warrant	June 15 1893	Bk 61 Pg 470	12
13	Geo. A. Covert	Warrant	June 15 1893	Bk 61 Pg 470	13
14	Geo. A. Covert	Warrant	June 15 1893	Bk 61 Pg 470	14
15	Geo. A. Covert	Warrant	June 15 1893	Bk 61 Pg 470	15
16	Geo. A. Covert	Warrant	June 15 1893	Bk 61 Pg 470	16
17	Geo. A. Covert	Warrant	June 15 1893	Bk 61 Pg 470	17
18	Geo. A. Covert	Warrant	June 15 1893	Bk 61 Pg 470	18
19	Geo. A. Covert	Warrant	June 15 1893	Bk 61 Pg 470	19
20	Geo. A. Covert	Warrant	June 15 1893	Bk 61 Pg 470	20
21	Geo. A. Covert	Warrant	June 15 1893	Bk 61 Pg 470	21
22	Geo. A. Covert	Warrant	June 15 1893	Bk 61 Pg 470	22
23	Geo. A. Covert	Warrant	June 15 1893	Bk 61 Pg 470	23
24	Geo. A. Covert	Warrant	June 15 1893	Bk 61 Pg 470	24
25	Geo. A. Covert	Warrant	June 15 1893	Bk 61 Pg 470	25
26	Geo. A. Covert	Warrant	June 15 1893	Bk 61 Pg 470	26
27	Geo. A. Covert	Warrant	June 15 1893	Bk 61 Pg 470	27
28	Geo. A. Covert	Warrant	June 15 1893	Bk 61 Pg 470	28
29	Geo. A. Covert	Warrant	June 15 1893	Bk 61 Pg 470	29
30	Geo. A. Covert	Warrant	June 15 1893	Bk 61 Pg 470	30
31	Geo. A. Covert	Warrant	June 15 1893	Bk 61 Pg 470	31
32	Geo. A. Covert	Warrant	June 15 1893	Bk 61 Pg 470	32
33	Geo. A. Covert	Warrant	June 15 1893	Bk 61 Pg 470	33
34	Geo. A. Covert	Warrant	June 15 1893	Bk 61 Pg 470	34
35	Geo. A. Covert	Warrant	June 15 1893	Bk 61 Pg 470	35
36	Geo. A. Covert	Warrant	June 15 1893	Bk 61 Pg 470	36
37	Geo. A. Covert	Warrant	June 15 1893	Bk 61 Pg 470	37
38	Geo. A. Covert	Warrant	June 15 1893	Bk 61 Pg 470	38
39	Geo. A. Covert	Warrant	June 15 1893	Bk 61 Pg 470	39
40	Geo. A. Covert	Warrant	June 15 1893	Bk 61 Pg 470	40
41	Geo. A. Covert	Warrant	June 15 1893	Bk 61 Pg 470	41
42	Geo. A. Covert	Warrant	June 15 1893	Bk 61 Pg 470	42
43	Geo. A. Covert	Warrant	June 15 1893	Bk 61 Pg 470	43
44	Geo. A. Covert	Warrant	June 15 1893	Bk 61 Pg 470	44
45	Geo. A. Covert	Warrant	June 15 1893	Bk 61 Pg 470	45
46	Geo. A. Covert	Warrant	June 15 1893	Bk 61 Pg 470	46
47	Geo. A. Covert	Warrant	June 15 1893	Bk 61 Pg 470	47
48	Geo. A. Covert	Warrant	June 15 1893	Bk 61 Pg 470	48
49	Geo. A. Covert	Warrant	June 15 1893	Bk 61 Pg 470	49
50	Geo. A. Covert	Warrant	June 15 1893	Bk 61 Pg 470	50
51	Geo. A. Covert	Warrant	June 15 1893	Bk 61 Pg 470	51
52	Geo. A. Covert	Warrant	June 15 1893	Bk 61 Pg 470	52
53	Geo. A. Covert	Warrant	June 15 1893	Bk 61 Pg 470	53
54	Geo. A. Covert	Warrant	June 15 1893	Bk 61 Pg 470	54
55	Geo. A. Covert	Warrant	June 15 1893	Bk 61 Pg 470	55
56	Geo. A. Covert	Warrant	June 15 1893	Bk 61 Pg 470	56
57	Geo. A. Covert	Warrant	June 15 1893	Bk 61 Pg 470	57
58	Geo. A. Covert	Warrant	June 15 1893	Bk 61 Pg 470	58
59	Geo. A. Covert	Warrant	June 15 1893	Bk 61 Pg 470	59
60	Geo. A. Covert	Warrant	June 15 1893	Bk 61 Pg 470	60
61	Geo. A. Covert	Warrant	June 15 1893	Bk 61 Pg 470	61
62	Geo. A. Covert	Warrant	June 15 1893	Bk 61 Pg 470	62
63	Geo. A. Covert	Warrant	June 15 1893	Bk 61 Pg 470	63
64	Geo. A. Covert	Warrant	June 15 1893	Bk 61 Pg 470	64
65	Geo. A. Covert	Warrant	June 15 1893	Bk 61 Pg 470	65
66	Geo. A. Covert	Warrant	June 15 1893	Bk 61 Pg 470	66
67	Geo. A. Covert	Warrant	June 15 1893	Bk 61 Pg 470	67
68	Geo. A. Covert	Warrant	June 15 1893	Bk 61 Pg 470	68
69	Geo. A. Covert	Warrant	June 15 1893	Bk 61 Pg 470	69
70	Geo. A. Covert	Warrant	June 15 1893	Bk 61 Pg 470	70



Kindert Fence
 9820 West Side
 9821 West Side
 9822 West Side
 9823 West Side
 9824 West Side
 9825 West Side
 9826 West Side
 9827 West Side
 9828 West Side
 9829 West Side
 9830 West Side
 9831 West Side
 9832 West Side
 9833 West Side
 9834 West Side
 9835 West Side
 9836 West Side
 9837 West Side
 9838 West Side
 9839 West Side
 9840 West Side
 9841 West Side
 9842 West Side
 9843 West Side
 9844 West Side
 9845 West Side
 9846 West Side
 9847 West Side
 9848 West Side
 9849 West Side
 9850 West Side
 9851 West Side
 9852 West Side
 9853 West Side
 9854 West Side
 9855 West Side
 9856 West Side
 9857 West Side
 9858 West Side
 9859 West Side
 9860 West Side
 9861 West Side
 9862 West Side
 9863 West Side
 9864 West Side
 9865 West Side
 9866 West Side
 9867 West Side
 9868 West Side
 9869 West Side
 9870 West Side
 9871 West Side
 9872 West Side
 9873 West Side
 9874 West Side
 9875 West Side
 9876 West Side
 9877 West Side
 9878 West Side
 9879 West Side
 9880 West Side
 9881 West Side
 9882 West Side
 9883 West Side
 9884 West Side
 9885 West Side
 9886 West Side
 9887 West Side
 9888 West Side
 9889 West Side
 9890 West Side
 9891 West Side
 9892 West Side
 9893 West Side
 9894 West Side
 9895 West Side
 9896 West Side
 9897 West Side
 9898 West Side
 9899 West Side
 9900 West Side
 9901 West Side
 9902 West Side
 9903 West Side
 9904 West Side
 9905 West Side
 9906 West Side
 9907 West Side
 9908 West Side
 9909 West Side
 9910 West Side
 9911 West Side
 9912 West Side
 9913 West Side
 9914 West Side
 9915 West Side
 9916 West Side
 9917 West Side
 9918 West Side
 9919 West Side
 9920 West Side
 9921 West Side
 9922 West Side
 9923 West Side
 9924 West Side
 9925 West Side

LOGAN CO. OHIO.

CHAMPAIGN CO. OHIO.

MIAMI TWP.

ADAMS TWP.

DETROIT, TOLEDO AND IRONTON RAILROAD
THE ANN ARBOR RAILROAD
 1880 Michigan Avenue, Dearborn, Michigan 48121
 IT IS MUTUALLY UNDERSTOOD THAT THE DATA AND/OR
 PLAN ARE NOT RESPONSIBLE FOR ANY ERRORS, OMISSIONS,
 AND/OR DISCREPANCIES THAT MAY EXIST ON THIS PRINT.
 Office of the Chief Engineer
 DATE: 4/8/70

RIGHT OF WAY AND TRACK MAP
DETROIT, TOLEDO & IRONTON R.R.
 Stationing 9920+80 To Station 9926+40
 SCALE 1" = 200 FT. JUNE 30/1948
 OFFICE OF CHIEF ENGINEER

ML-Ohio
 70

