

*Harbour*  
M<sup>o</sup>Intosh to ~~Cramer~~ Survey Description

April, 1972

Being situated in Miami Township, Logan County, Ohio; and being a part of Section 6, Town 3, Range 13.

Beginning at a iron in the center of State Route 508 that bears N 19° - 27'W 1207.0 feet from the intersection of said State Route 508 with the south line of Section 6.

Thence with the center of State Route 508 N 19° - 27'W 183.6 feet to a iron. Said iron bears S 19° - 27'E 32.4 feet from the south west corner west corner of Stokes 21.80 acre tract.

Thence S 87° - 08'E 167.6 feet to a iron, passing thru a iron at 32.4 feet.

Thence S 19° - 27'E 120.0 feet to a iron.

Thence S 70° - 33'W 155.0 feet to the place of beginning, passing thru a iron at 125.0 feet.

Containing 0.54 of an acre more or less. Being surveyed from a 81.81 acre tract.

---

Owen H. Shirk  
Surveyor 4271

INDEXED ON MAP  
4959

1D-1

*Conner*  
M<sup>c</sup>Intosh to ~~Healour~~ Survey Description

April, 1972

Being situated in Miami Township, Logan County, Ohio; and being a part of Section 6, Town 3, Range 13.

Beginning at a iron in the center of State Route 508 that bears N 19° - 27'W 1057.0 feet from the intersection of said State Route 508 with the south line of Section 6.

Thence with the center of State Route 508 N 19° - 27'W 150.0 feet to a iron. Said iron bears S 19° - 27'E 216.0 feet from the southwest corner of Stoke's 21.80 acre tract.

Thence N 70° - 33'E 155.0 feet to a iron, passing thru a iron at 30.0 feet.

Thence S 19° - 27'E 150.0 feet to a iron.

Thence S 70° - 33'W 155.0 feet to the place of beginning, passing thru a iron at 125.0 feet.

Containing 0.53 of an acre more or less. Being surveyed from a 81.81 acre tract.

---

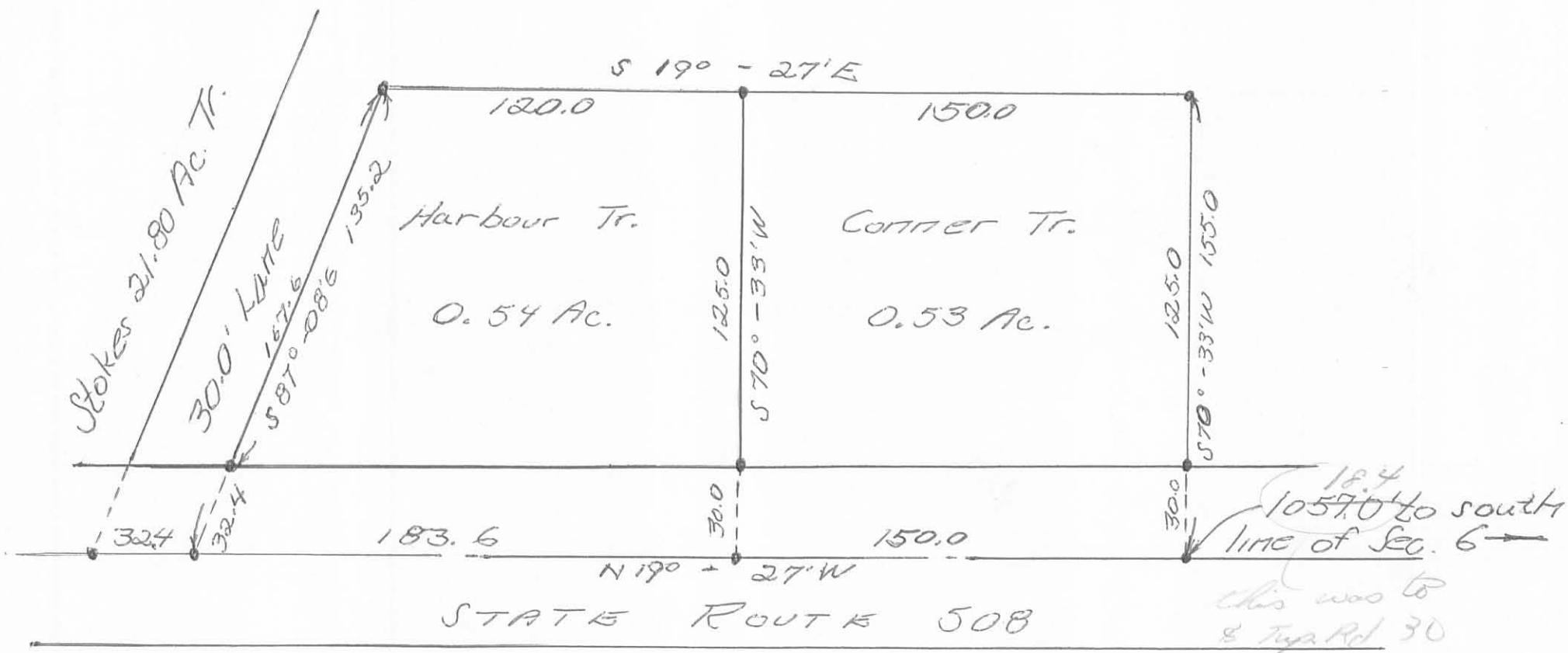
Owen K. Shirk  
Surveyor 4271

INDEXED ON MAP

4959

1D-2

M<sup>c</sup> INTOSH SURVEY = MIAMI TOWNSHIP;  
 LOGAN COUNTY, OHIO; SECTION 6, TOWN 3, RANGE 13  
 1" = 50' - • DENOTES IRONS



Owen K. Stirk  
 Surveyor 4271  
 Surveyed: 4-8-72

INDEXED ON MAP  
 4959 IP