

REVID 8-7-08 SMJ OK

# Lee Surveying and Mapping Co., Inc.

Land Surveys • Topography • Subdivisions • Construction Layout

117 N. Madriver St.  
Bellefontaine OH 43311



Phone: (937) 593-7335  
Fax: (937) 593-7444

## TERRY 1.174 ACRES

Lying in Section 29, Town 3, Range 13, Miami Township, Logan County, Ohio.

Being all of the Bruce A. Terry and Norma J. Terry 0.75 acre tract as deeded and described in Official Record 251, Page 348 of the Logan County Records of Deeds and being more particularly described as follows:

Beginning on a MAG nail set on the center-line of County Highway 70 at the intersection with the east line of the northwest quarter of Section 29.

THENCE, with the center-line of County Highway 70 (60 feet wide), S 76°-30'-58"E, a distance of 275.73 feet to a MAG nail set.

THENCE, with the north line of the C.C.C. & St. L. Ry. 0.25 acre tract (Vol. 128, Pg. 291), S 85°-13'-10"W, a distance of 572.32 feet to a 5/8 inch iron rod set, passing a 5/8 inch iron rod set at 95.72 feet.

THENCE, with the east lines of The Cleveland, Cin., Chicago and St. Louis Ry. Co. 0.21 acre tract (Vol. 128, Pg. 282) and the Holmes I. Bell, Trustee 11.768 acre tract (O.R. 547, Pg. 622, Tract II), N 05°-02'-52"E, a distance of 181.55 feet to a MAG nail found on the center-line of County Highway 70, passing a 5/8 inch iron rod found at 10.15 feet and a railroad spike set at 151.21 feet.

THENCE, with the center-line of County Highway 70, the following two courses:

S 76°-18'-57"E, a distance of 63.70 feet to a railroad spike found.

S 76°-30'-59"E, a distance of 230.70 feet to the point of beginning.

Containing 1.174 acres, of which 0.360 acre is within the highway right-of-way.

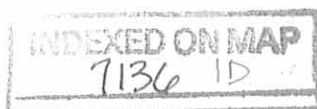
The basis for bearings is the center-line of County Highway 70, being S 76°-18'-57"E, and all other bearings are from angles and distances measured in a field survey by Lee Surveying and Mapping Co., Inc. on August 1, 2008.



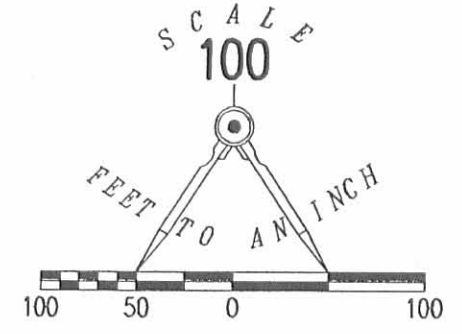
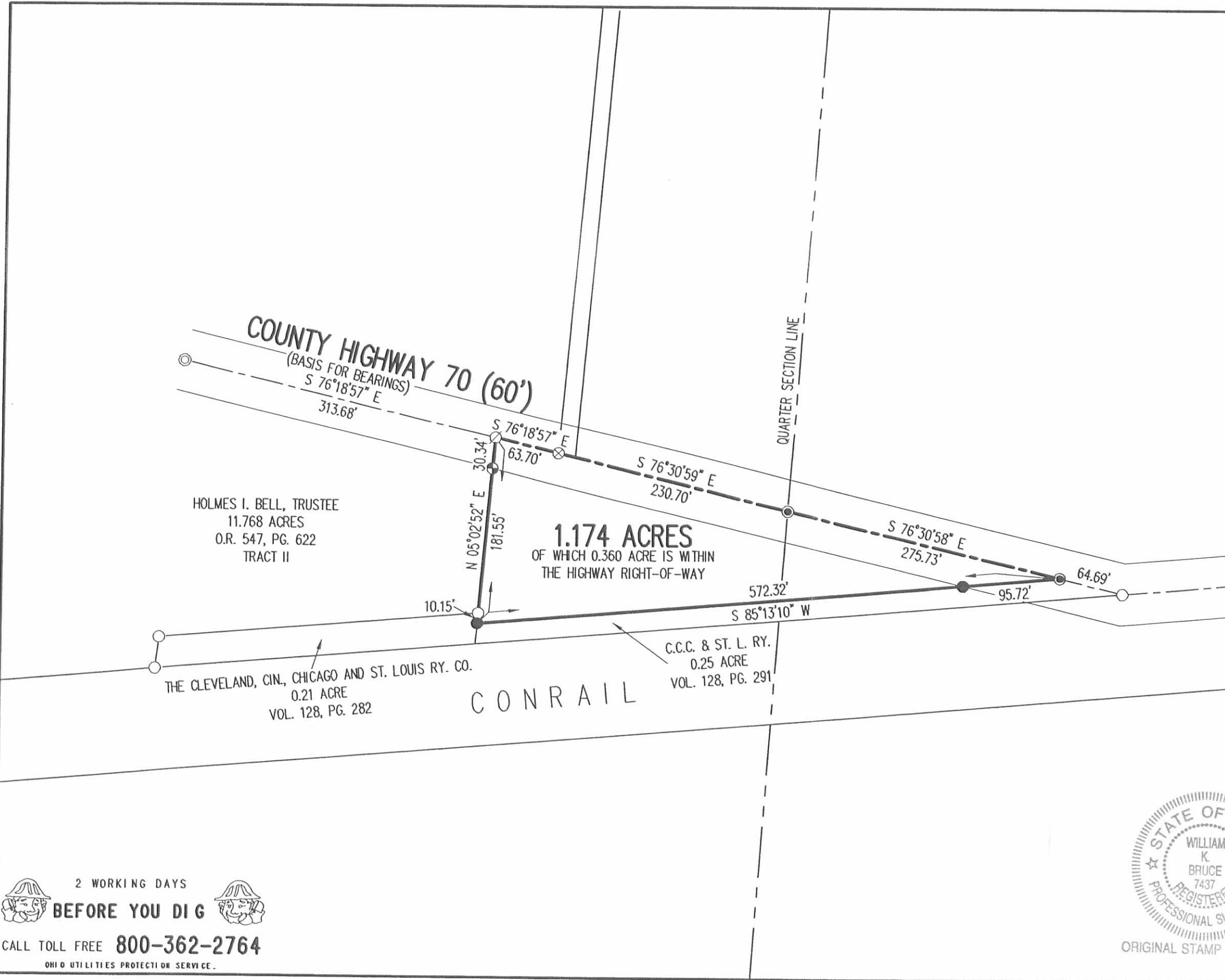
Description prepared by:

William K. Bruce  
Professional Surveyor 7437  
August 6, 2008

4676078



REC'D 8-7-08 EML/CL



- LEGEND:
- ⊙ MAG NAIL FOUND
  - ⊙ MAG NAIL SET
  - 5/8 INCH IRON ROD FOUND
  - 5/8 INCH IRON ROD SET
  - ⊙ 3/4 INCH IRON ROD FOUND
  - ⊕ RAILROAD SPIKE SET
  - ⊗ RAILROAD SPIKE FOUND

**RETRACEMENT SURVEY OF THE  
BRUCE A. TERRY AND  
NORMA J. TERRY  
0.75 ACRE TRACT  
OFFICIAL RECORD 251, PAGE 348  
SECTION 29, TOWN 3, RANGE 13  
MIAMI TOWNSHIP  
LOGAN COUNTY, OHIO**

SURVEYED BY:

*William K. Bruce*  
WILLIAM K. BRUCE  
PROFESSIONAL SURVEYOR 7437  
AUGUST 1, 2008



ORIGINAL STAMP IN GREEN

COPYRIGHT 2008 BY:  
**LEE SURVEYING & MAPPING CO., INC.**  
117 North Madriver Street  
BELLEFONTAINE, OHIO 43311  
(937) 593-7335  
surveys@lsmcinc.us  
KSS D0808 4676078 L-4676-3

2 WORKING DAYS  
**BEFORE YOU DIG**  
CALL TOLL FREE **800-362-2764**  
OHIO UTILITIES PROTECTION SERVICE.

RECORDED ON MAP  
7/30/08 IP

# Lee Surveying and Mapping Co., Inc.

Land Surveys • Topography • Subdivisions • Construction Layout

117 N. Madriver St.  
Bellefontaine OH 43311



Phone: (937) 593-7335  
Fax: (937) 593-7444

## BELL 60.514 ACRES TRACT A

Lying in Sections 29 and 30, Town 3, Range 13, Miami Township, Logan County, Ohio.

Being out of the Holmes I. Bell and Ronald K. Bell original 102.11 acre tract as deeded and described in Volume 400, Page 446 of the Logan County Records of Deeds and being more particularly described as follows:

Beginning at a MAG nail set at the intersection of the center-line of County Highway 70 and the east line of the northwest quarter of Section 29.

THENCE, with the center-line of County Highway 70 (60 feet wide), N 76°-18'-57" W, a distance of 230.70 feet to a railroad spike found at the TRUE POINT OF BEGINNING.

THENCE, with the center-line of County Highway 70, the following two (2) courses:

N 76°-18'-57" W, a distance of 377.38 feet to a 3/4 inch iron rod found;

N 76°-37'-38" W, a distance of 281.29 feet to a railroad spike found.

THENCE, with the lines of the James T. Hamblin 1.025 acre tract (O.R. 202, Pg. 494), the following three (3) courses:

N 13°-54'-37" E, a distance of 241.78 feet to a 5/8 inch iron rod found, passing a 5/8 inch iron rod found at 25.00 feet;

N 76°-36'-01" W, a distance of 200.38 feet to a 5/8 inch iron rod found;

S 6°-25'-07" W, a distance of 243.27 feet to a railroad spike found, passing a 5/8 inch iron rod found at 218.05 feet.

THENCE, with the center-line of County Highway 70, N 76°-05'-41" W, a distance of 538.95 feet to a 1/2 inch iron rod found.

THENCE, with the east line of the Lisa A. Bamauer original 40.0 acre tract (O.R. 198, Pg. 443, Tract No. 2), N 4°-31'-49" E, a distance of 905.35 feet to a 5/8 inch iron rod found, passing a 5/8 inch iron rod set at 25.34 feet.

THENCE, with the lines of the Ronald K. Bell 5.22 acre tract (Vol. 333, Pg. 494), the following four (4) courses:

S 85°-27'-38" E, a distance of 348.85 feet to a 5/8 inch iron rod found;

N 4°-31'-15" E, a distance of 397.81 feet to a 5/8 inch iron rod found;

N 0°-26'-28" W, a distance of 249.19 feet to a 5/8 inch iron rod found;

N 82°-50'-10" W, a distance of 328.66 feet to a 5/8 inch iron rod set.

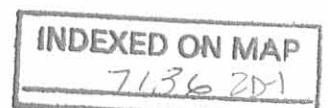
THENCE, with the east line of the said 40 acres, N 4°-30'-00" E, a distance of 1163.59 feet to a 5/8 inch iron rod found.

THENCE, with the lines of the Ronald K. Bell 42.61 acre tract (Vol. 382, Pg. 142), the following three (3) courses:

S 84°-58'-42" E, a distance of 218.40 feet to a 5/8 inch iron rod found;

S 4°-53'-50" W, a distance of 152.13 feet to a 5/8 inch iron rod found;

S 86°-25'-15" E, a distance of 764.24 feet to a 5/8 inch iron rod set.



# Lee Surveying and Mapping Co., Inc.

Land Surveys • Topography • Subdivisions • Construction Layout

117 N. Madriver St.  
Bellefontaine OH 43311



Phone: (937) 593-7335  
Fax: (937) 593-7444

THENCE, S 4°-30'-20" W, a distance of 1600.59 feet to a 5/8 inch iron rod set.

THENCE, S 88°-10'-19" E, a distance of 26.67 feet to a 5/8 inch iron rod set.

THENCE, S 4°-42'-49" W, a distance of 494.50 feet to a 5/8 inch iron rod set.

THENCE, S 76°-26'-14" E, a distance of 353.65 feet to a 5/8 inch iron rod set.

THENCE, with the west line of the said 42.61 acre tract, S 5°-02'-51" W, a distance of 660.81 feet to the point of beginning, passing a 5/8 inch iron rod set at 635.52 feet.


Containing 60.514 acres, of which 0.689 acre is within the highway right-of-way, 32.073 acres are out of Section 30 and 28.441 acres are out of Section 29.

The basis for bearings is the east line of the Lisa A. Bamauer original 40 acre tract (O.R. 198, Pg. 443, Tract No. 2), being N 4°-30'-00" E, and all other bearings are from angles and distances measured in a field survey by Lee Surveying and Mapping Co., Inc. on November 15, 2001.

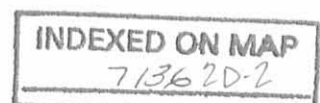
Description prepared by:



ORIGINAL STAMP IN GREEN

  
Jeffrey I. Lee  
Professional Surveyor 6359  
December 3, 2001

L-931



REC'D 12-11-01 SAM/OK  
**Lee Surveying and Mapping Co., Inc.**

Land Surveys • Topography • Subdivisions • Construction Layout

117 N. Madriver St.  
Bellefontaine OH 43311



Phone: (937) 593-7335  
Fax: (937) 593-7444

**BELL  
25.442 ACRES  
TRACT B**

Lying in Sections 29 and 30, Town 3, Range 13, Miami Township, Logan County, Ohio.

Being out of the Holmes I. Bell and Ronald K. Bell original 102.11 acre tract as deeded and described in Volume 400, Page 446 of the Logan County Records of Deeds and being more particularly described as follows:

Beginning at a MAG nail set at the intersection of the center-line of County Highway 70 and the east line of the northwest quarter of Section 29.

THENCE, with the center-line of County Highway 70 (60 feet wide), N 76°-18'-57" W, a distance of 230.70 feet to a railroad spike found.

THENCE, with the west line of the Ronald K. Bell 42.61 acre tract (Vol. 382, Pg. 142), N 5°-02'-51" E, a distance of 660.81 feet to a 5/8 inch iron rod set at the TRUE POINT OF BEGINNING, passing a 5/8 inch iron rod set at 25.29 feet.

THENCE, N 76°-26'-14" W, a distance of 353.65 feet to a 5/8 inch iron rod set.

THENCE, N 4°-42'-49" E, a distance of 494.50 feet to a 5/8 inch iron rod set.

THENCE, N 88°-10'-19" W, a distance of 26.67 feet to a 5/8 inch iron rod set.

THENCE, N 4°-30'-20" E, a distance of 1600.59 feet to a 5/8 inch iron rod set.

THENCE, with the lines of the said 42.61 acre tract, the following four (4) courses:

S 86°-25'-15" E, a distance of 579.28 feet to a 5/8 inch iron rod found;

S 4°-30'-20" W, a distance of 1582.88 feet to a 5/8 inch iron rod set;

N 88°-10'-19" W, a distance of 199.98 feet to a 5/8 inch iron rod set;

S 5°-02'-51" W, a distance of 566.69 feet to the point of beginning.


Containing 25.442 acres, of which 21.170 acres are out of Section 30 and 4.272 acres are out of Section 29.

The basis for bearings is the east line of the Lisa A. Bamauer original 40 acre tract (O.R. 198, Pg. 443, Tract No. 2), being N 4°-30'-00" E, and all other bearings are from angles and distances measured in a field survey by Lee Surveying and Mapping Co., Inc. on November 15, 2001.

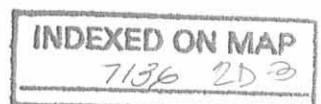
Description prepared by:



ORIGINAL STAMP IN GREEN

  
Jeffrey I. Lee  
Professional Surveyor 6359  
December 3, 2001

L-931



RECID 12-11-01 SMY ok  
**Lee Surveying and Mapping Co., Inc.**

Land Surveys • Topography • Subdivisions • Construction Layout

117 N. Madriver St.  
Bellefontaine OH 43311



Phone: (937) 593-7335  
Fax: (937) 593-7444

**BELL  
0.082 ACRES  
TRACT C**

Lying in Sections 29 and 30, Town 3, Range 13, Miami Township, Logan County, Ohio.

Being out of the Ronald K. Bell and Marquerite Bell original 42.61 acre tract as deeded and described in Volume 382, Page 142 of the Logan County Records of Deeds and being more particularly described as follows:

Beginning at a stone found on the northeast corner of the northwest quarter of Section 29.

THENCE, with the north line of the Holmes I. Bell, Trustee original 5.46 acre tract (O.R. 530, Pg. 127, Tract III), N 88°-10'-19" W, a distance of 216.65 feet to a 5/8 inch iron rod set.

THENCE, N 5°-02'-51" E, a distance of 16.53 feet to a 5/8 inch iron rod set.


THENCE, with a south line of the Holmes I. Bell original 102.11 acre tract (Vol. 400, Pg. 446), S 88°-10'-19" E, a distance of 216.49 feet to a 5/8 inch iron rod set, passing a 5/8 inch iron rod set at 199.98 feet.

THENCE, with a west line of the David A. Heath original 169.34 acre tract (Vol. 301, Pg. 362), S 4°-30'-20" W, a distance of 16.52 feet to the point of beginning.

Containing 0.082 acres, of which 0.061 acre is out of Section 30 and 0.021 acre is out of Section 29.

The basis for bearings is the east line of the Lisa A. Bamauer original 40 acre tract (O.R. 198, Pg. 443, Tract No. 2), being N 4°-30'-00" E, and all other bearings are from angles and distances measured in a field survey by Lee Surveying and Mapping Co., Inc. on November 15, 2001.

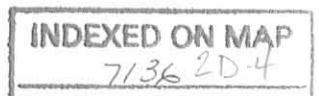
Description prepared by:

  
Jeffrey I. Lee  
Professional Surveyor 6359  
December 3, 2001



ORIGINAL STAMP IN GREEN

L-931



REC'D 12-17-01 SMM OK  
**Lee Surveying and Mapping Co., Inc.**

Land Surveys • Topography • Subdivisions • Construction Layout

117 N. Madriver St.  
Bellefontaine OH 43311



Phone: (937) 593-7335  
Fax: (937) 593-7444

**BELL  
11.768 ACRES  
TRACT D**

Lying in Section 29, Town 3, Range 13, Miami Township, Logan County, Ohio.

Being out of the Holmes I. Bell and Ronald K. Bell original 102.11 acre tract as deeded and described in Volume 400, Page 446 of the Logan County Records of Deeds and being more particularly described as follows:

Beginning at a MAG nail set at the intersection of the center-line of County Highway 70 and the east line of the northwest quarter of Section 29.

THENCE, with the center-line of County Highway 70 (60 feet wide), N 76°-18'-57" W, a distance of 294.40 feet to a MAG nail set at the TRUE POINT OF BEGINNING.

THENCE, with the west line of the Bruce A. Terry original 1.0 acre tract (O.R. 251, Pg. 348), S 5°-02'-51" W, a distance of 171.40 feet to a 5/8 inch iron rod set, passing a 5/8 inch iron rod set at 25.29 feet.

THENCE, with the lines of the Conrail right-of-way, the following three (3) courses:

S 85°-13'-10" W, a distance of 312.40 feet to a 5/8 inch iron rod set;

S 7°-04'-26" W, a distance of 30.65 feet to a 5/8 inch iron rod set;

S 85°-13'-10" W, a distance of 979.89 feet to a 5/8 inch iron rod set.

THENCE, with the east line of the Melvin Pfister 0.11 acre tract (Vol. 333, Pg. 22, Tract Four), N 4°-30'-00" E, a distance of 617.11 feet to a 1/2 inch iron rod found, passing a 3/4 inch iron rod found at 591.77 feet.

THENCE, with the center-line of County Highway 70, the following three (3) courses:

S 76°-05'-41" E, a distance of 573.20 feet to a 5/8 inch iron rod found;

S 76°-37'-38" E, a distance of 408.11 feet to a 3/4 inch iron rod found;

S 76°-18'-57" E, a distance of 313.68 feet to the point of beginning.


Containing 11.768 acres, of which 0.718 acre is within the highway right-of-way.

The basis for bearings is the east line of the Lisa A. Bamauer original 40 acre tract (O.R. 198, Pg. 443, Tract No. 2), being N 4°-30'-00" E, and all other bearings are from angles and distances measured in a field survey by Lee Surveying and Mapping Co., Inc. on November 15, 2001.

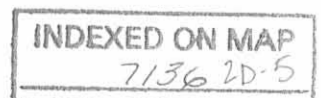
Description prepared by:



ORIGINAL STAMP IN GREEN

  
Jeffrey I. Lee  
Professional Surveyor 6359  
December 3, 2001

L-931



REC'D 12-11-01 SUMAN  
**Lee Surveying and Mapping Co., Inc.**

Land Surveys • Topography • Subdivisions • Construction Layout

117 N. Madriver St.  
Bellefontaine OH 43311



Phone: (937) 593-7335  
Fax: (937) 593-7444

**BELL  
16.5 INGRESS/EGRESS EASEMENT**

Lying in Sections 29 and 30, Town 3, Range 13, Miami Township, Logan County, Ohio.

Being a 16.5 feet wide ingress/egress easement over the Holmes I. Bell and Ronald K. Bell original 102.11 acre tract as deeded and described in Volume 400, Page 446 of the Logan County Records of Deeds and being more particularly described as follows:

Beginning at a railroad spike found on the center-line of County Highway 70 at the southeast corner of the said 102.11 acre tract.

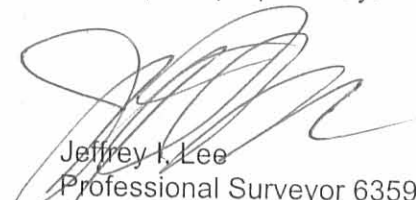
THENCE, with the east line of the said 102.11 acre tract, N 5°-02'-51" E, a distance of 660.81 feet to a 5/8 inch iron rod set at the TRUE POINT OF BEGINNING.

THENCE, with the east line of the said 102.11 acre tract and the east line of the 16.5 feet wide easement, N 5°-02'-51" E, a distance of 566.69 feet to a 5/8 inch iron rod set.

THENCE, with the north line of the 16.5 feet wide easement, N 88°-10'-19" W, a distance of 353.19 feet to a 5/8 inch iron rod set at the terminus of the easement on the west line of a 25.442 acre tract.

The basis for bearings is the east line of the Lisa A. Bamauer original 40 acre tract (O.R. 198, Pg. 443, Tract No. 2), being N 4°-30'-00" E, and all other bearings are from angles and distances measured in a field survey by Lee Surveying and Mapping Co., Inc. on November 15, 2001.

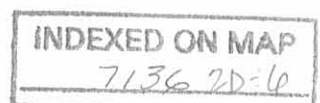
Description prepared by:

  
Jeffrey I. Lee  
Professional Surveyor 6359  
December 3, 2001

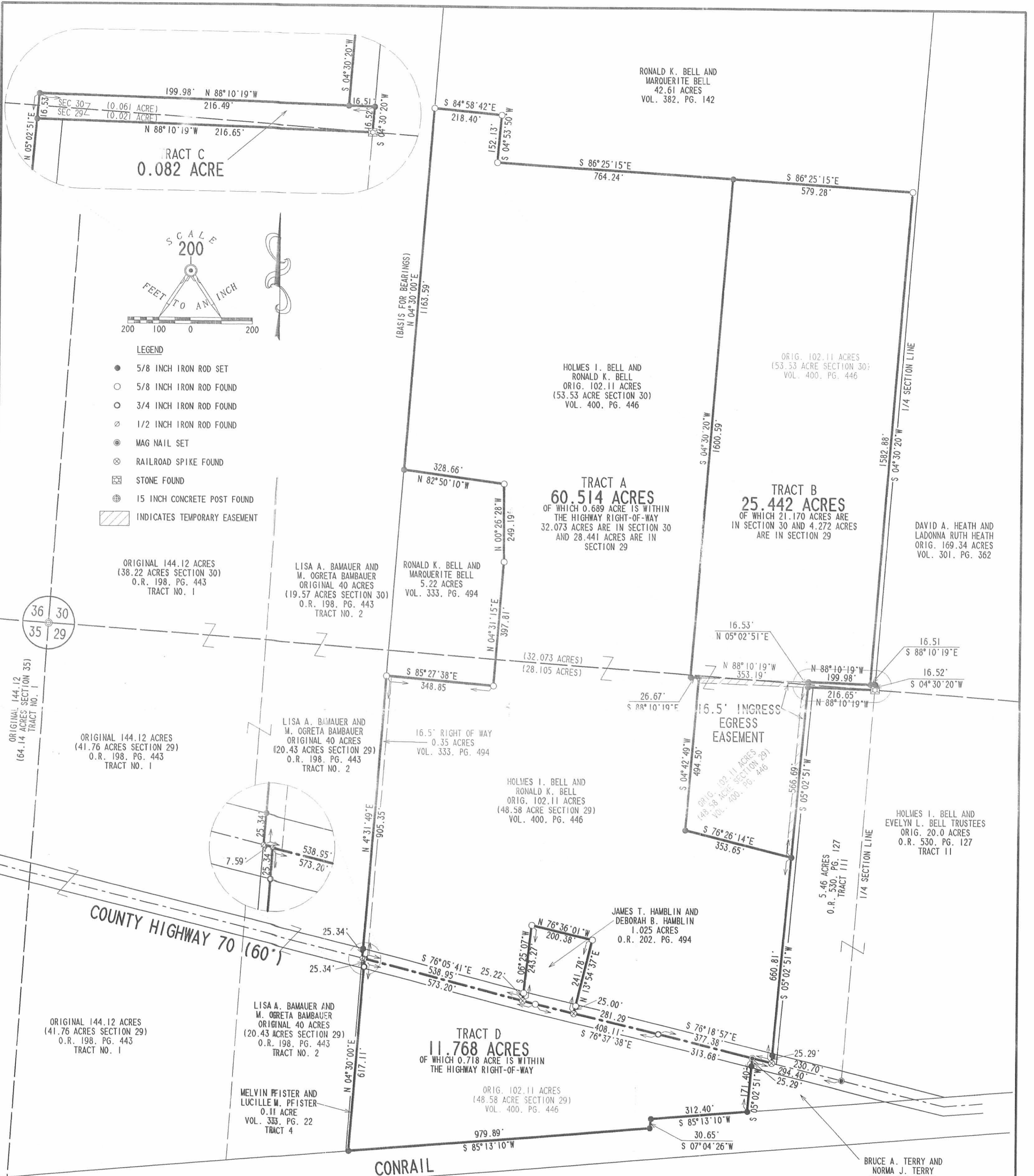


ORIGINAL STAMP IN GREEN

L-931







**SURVEY OF THREE TRACTS OUT OF AND A 16.5' EASEMENT OVER THE HOLMES I. BELL AND RONALD K. BELL ORIGINAL 102.11 ACRES VOLUME 400, PAGE 446 AND SURVEY OF 0.082 ACRES OUT OF THE RONALD K. BELL AND MARQUERITE BELL 42.61 ACRE TRACT VOLUME 382, PAGE 142 SECTIONS 29 AND 30, TOWN 3, RANGE 13 MIAMI TOWNSHIP LOGAN COUNTY, OHIO**



**SURVEYED BY:**  
JEFFREY I. LEE  
PROFESSIONAL SURVEYOR 6359  
NOVEMBER 15, 2001

**COPYRIGHT 2001 BY:**  
LEE SURVEYING & MAPPING CO., INC.  
117 North Madriver Street  
BELLEFONTAINE, OHIO 43311  
(937) 593-7335

**2 WORKING DAYS BEFORE YOU DIG**  
CALL TOLL FREE 800-362-2764  
OHIO UTILITIES PROTECTION SERVICE.

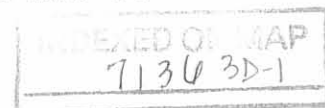
**INDEXED ON MAP**  
7136 2P

BELL WOODS SURVEY

Miami Township  
Logan County, Ohio  
June 1, 1976

The following described real estate is situated in Miami Township, Logan County, Ohio and being part of Section 29 and Fractional Section 30, Town 3, Range 13, Between the Miami Rivers Survey and more particularly described as follows:

Beginning at an iron bar in the line between Russell Stewart's 19.57 acre tract and Russell Bell's 29.13 acre tract in Fractional Section 30 and also being the west line of Tract No. 4 as shown on the recorded plat of E. S. Baughman's land on page 25, Vol. D of the Record of Surveys in the Logan County Engineer's Office, Court House, Bellefontaine, Ohio, said iron bar being N.4°30'E. 4232.4 feet from a stone with a chiseled cross on top at the southwest corner of said Tract No. 4, said stone also being in the south line of the Northwest Quarter of Section 29 and the southwest corner of Melvin Pfister's 4.28 acre tract; thence, with the west line of said Tract No. 4, N.4°30'E. 720.9 feet to the south bank of the Great Miami River, passing a stone with a chiseled cross on top at 678.9 feet; thence northeasterly with the south bank of said river to a point at the northeast corner of Tract No. 1 of said Baughman survey, said point also being the northwest corner of David A. Heath's 103.33 acre tract; thence with the east line of said Tract No. 1, said line being parallel to and 1577.5 feet east of the west line of said Tract No. 4, S.4°30'W. 2960.6 feet to a stone at the northeast corner of Helen Wirick's 5.46 acre tract, passing an iron bar at 15.5 feet, the east side of a 40 inch Hackberry stump at 55.5 feet, and an iron bar at



1361.3 feet; thence N.88°09'W. 200.0 feet to an iron bar at the northwest corner of said Wirick's 5.46 acre tract; thence, with the existing property line fence between said Wirick's 5.46 acre tract and Russell Bell's 0.57 acre tract, S.5°03'W. 1214.3 feet to a railroad spike in the center of County Highway No. 70; thence with said centerline N.76°19'W. 16.7 feet to a railroad spike; thence N.5°03'E. 1227.4 feet, parallel to and 16.5 feet west of the said property line fence, to a point; thence S.88°09'E. 199.9 feet, parallel to and 16.5 feet north of the north line of said Wirick's 5.46 acre tract, to a point; thence N.4°30'E. 1583.3 feet, parallel to and 16.5 feet west of the east line of said Tract No. 1, to an iron bar, said iron bar being N.86°26'W. 16.5 feet from an iron bar in the east line of said Tract No. 1; thence N.86°26'W. 1343.7 feet to an iron bar; thence N.4°56'E. 152.2 feet to an iron bar; thence N.85°00'W. 218.6 feet to the place of beginning, containing 42.61 acres of which 42.15 acres are in Fractional Section 30 and 0.46 acres in Section 29, more or less.

Prepared by: *Richard A. Bruce*

Checked by: *Jan R. Jodo*

7136 2D-2

INDEXED ON MAP



Note: Tracts 1, 2, 3, 4, & 5 refer to the E. S. Baughman Survey found in Vol. D, page 25 of the Record of Surveys.

Fractional Section 30, Town 3, Range 13  
Section 29, Town 3, Range 13

Stone Found  
1999  
N. 88° 53' W.  
200.0'

R/W Area in Sec. 29 = 0.46 Ac.

Both Parties Agree that the Existing Fence is the Property Line

County Highway No. 70  
50' R/W

7136  
INDEXED ON MAP

BELL WOODS SURVEY  
Miami Township  
Logan County, Ohio  
June 1, 1976

Scale 1" = 200'

Surveyed and Platted By:  
Richard A. Bruce  
Surveyor In Training No. 1581

*Don L. Dodson*  
Don L. Dodson  
Reg. Surveyor 4270

Between The Miami Rivers Survey  
Sec. 29 & Fract. Sec. 30, Town 3, Range 13

Louis A. Davidson  
50.34 Ac.

Stone Found With A Chiseled Cross on Top

Iron Bar Found

Melvin Pfister  
4.28 Ac.

Russell Stewart  
14.44 Ac.

Russell H. Bell  
21.26 Ac.

14.32 Ac.

12.56 Ac.

Helen R. Wirick  
5.46 Ac.

Tract No. 5

Russell Stewart  
19.57 Ac.

Russell H. Bell  
17.12 Ac.

Tract No. 4

Tract No. 3

Tract No. 2

Tract No. 1

David A. Heath  
103.33 Ac.

GREAT MIAMI RIVER

Stone Found With A Chiseled Cross On Top

5/8" Iron Bar Set  
40" Hackberry Stump

7.14 Ac. Includes R/W Area in Tract Sec. 30

5.4° 30' W.  
1367.3'

9x9" Conc. Post, 8.2' east of line

720.9'  
N. 4° 30' E.

12.01 Ac.

10.71 Ac.

12.29 Ac.

5/8" Iron Bar Set

N. 85° 00' W.  
218.6'

7.751'

5/8" Iron Bars Set

1343.7'

N. 86° 26' W.

16.5'

5/8" Iron Bar Set

9x9" Conc. Post, 71' East of line

6.83 Ac.

1583.3'

1599.3'

16.5'

N. 4° 30' E.  
2734.4'

Russell H. Bell  
21.26 Ac.

14.32 Ac.

12.56 Ac.

1999  
N. 88° 53' W.  
200.0'

16.5'

Helen R. Wirick  
5.46 Ac.

Iron Bar Found  
0.90' East of Line

N. 76° 30' W.  
789.6'

Iron Bar Found

377.8'

Railroad Spikes Set

County Highway No. 70  
50' R/W

Iron Bar Found

Iron Bar Found

776.6'  
N. 4° 30' E.

Melvin Pfister  
4.28 Ac.

Stone Found With A Chiseled Cross on Top