

REC'D 9-15-08 SMJ DL

Lee Surveying and Mapping Co., Inc.

Land Surveys • Topography • Subdivisions • Construction Layout

117 N. Madriver St.
Bellefontaine OH 43311



Phone: (937) 593-7335
Fax: (937) 593-7444

SHOUGH 6.493 ACRES

Lying in Section 5, Town 3, Range 13, Miami Township, Logan County, Ohio.

Being out of the Daniel P. Shough and Jean Francis Shough 16.585 acre tract as deeded and described in Official Record 26, Page 984 of the Logan County Records of Deeds and being more particularly described as follows:

Beginning on a 5/8 inch iron rod found at the southwest corner of Quail Ridge Subdivision (Plat Cabinet B, Slide 48B).

THENCE, with the south line of Quail Ridge Subdivision, S 85°-00'-56"E, a distance of 1265.38 feet to a railroad spike found on the center-line of Ohio Route 508, passing a 5/8 inch iron rod found at 1225.94 feet.

THENCE, with the center-line of Ohio Route 508 (60 feet wide), S 35°-29'-27"E, a distance of 150.00 feet to a MAG nail set.

THENCE, N 85°-00'-59"W, a distance of 39.44 feet to a 5/8 inch iron rod set on the west right-of-way of Ohio Route 508.

THENCE, with the west right-of-way of Ohio Route 508, N 35°-29'-27"W, a distance of 110.56 feet to a 5/8 inch iron rod set.

THENCE, N 85°-00'-56"W, a distance of 743.14 feet to a 5/8 inch iron rod set.

THENCE, S 04°-12'-30"W, a distance of 476.00 feet to a 5/8 inch iron rod set.

THENCE, with the north line of the Mary J. Weeks, Trustee 80 acre tract (O.R. 628, Pg. 225, Tract I), N 84°-44'-50"W, a distance of 508.00 feet to a concrete post found.

THENCE, with the east line of the Mary J. Weeks, Trustee 18.87 acre tract (O.R. 628, Pg. 225, Tract II), N 04°-12'-15"E, a distance of 503.62 feet to the point of beginning.

Containing 6.493 acres, of which 0.103 acre is within the highway right-of-way.

The basis for bearings is the center-line of Ohio Route 508, being S 35°-29'-27"E, and all other bearings are from angles and distances measured in a field survey by Lee Surveying and Mapping Co., Inc. on September 9, 2008.

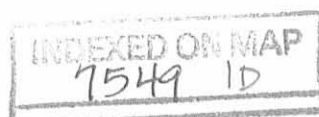


ORIGINAL STAMP IN GREEN

Description prepared by:

William K. Bruce
Professional Surveyor 7437
September 10, 2008

1454095



REC'D 3-19-99 SMJ QLV

LESLIE H. GEESLIN

REGISTERED SURVEYOR 5248

P. O. BOX 274

RUSHSVLVANIA, OHIO 43347

TELEPHONE: (937) 468-2793

FAX: (937) 468-2080

MUELLER SURVEY

March 18, 1999

The following described real estate situated in the State of Ohio, County of Logan, Township of Miami, being part of Section 5, Town 3, Range 13, and more particularly described as follows:

Beginning at a R. R. spike found in the centerline of State Route 508 at the northeast corner of Don L. Baughman's 7.296 acre tract as described in O. R. Vol. 359 Page 628.

Thence with said Baughman's north line N. 85° 40' 58" W. 953.24 feet to a 5/8 inch iron bar found, passing a 5/8 inch iron bar found at 34.68 feet.

Thence N. 56° 22' 27" E. 107.69 feet to a 5/8 inch iron bar found.

Thence on a 120.00 foot radius curve, said curve having a central angle of 20° 12' 21", a tangent of 21.38 feet and a chord measurement of S. 43° 43' 43" E. 42.10 feet, an arc distance of 42.32 feet to a 5/8 inch iron bar set.

Thence N. 30° 20' 45" E. 49.43 feet to a 5/8 inch iron bar set.

Thence S. 59° 39' 15" E. 50.00 feet to a 5/8 inch iron bar set.

Thence S. 30° 20' 45" W. 22.78 feet to a 5/8 inch iron bar set.

Thence S. 4° 19' 20" W. 19.88 feet to a 5/8 inch iron bar set.

Thence on a 120.00 foot radius curve, said curve having a central angle of 3° 12' 12", a tangent of 3.35 feet and a chord measurement of S. 84° 04' 52" E. 6.71 feet, an arc distance of 6.71 feet to a 5/8 inch iron bar found.

Thence S. 85° 40' 58" E. 666.66 feet to a 5/8 inch iron bar found.

Thence on a 35.00 foot radius curve to the left, said curve having a central angle of 120° 06' 04", a tangent of 60.75 feet and a chord measurement of N. 34° 16' 00" E. 60.65 feet, an arc distance of 73.37 feet to a 5/8 inch iron bar found.

Thence N. 64° 12' 58" E. 30.00 feet to a magnetic nail found in the centerline of said S. R. 508.

Thence with the centerline of said S. R. 508 S. 25° 47' 02" E. 101.25 feet to the place of beginning.

Containing 0.616 acres more or less of which 0.064 acre is in the right of way of State Route 508.

The above described 0.616 acre tract being part of Don L. Baughman and Joy A. Pool's original 101.87 acre tract as described in D. B. Vol. 367 page 713.

Bearings are based on an assumed bearing (N. 85° 40' 58" W.) for the north line of Don L. Baughman's 7.296 acre tract as described in O. R. Vol. 359 Page 628 in this field survey by Leslie H. Geeslin, Reg. Surveyor 5248 on March 18, 1999.

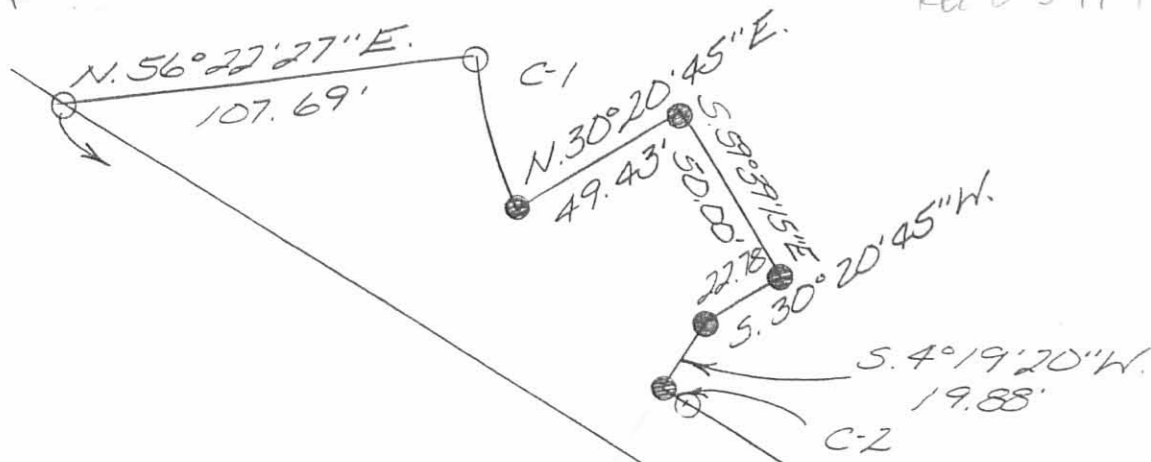
MIAMI\16\MUELLER6.SAM

7549 2D

Leslie H. Geeslin



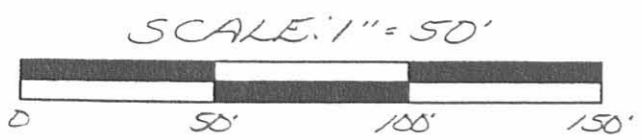
REC'D 3-19-99 SMY OKV



C-1:
 $\Delta = 20^{\circ}12'21''$
 $R = 120.00'$
 $T = 21.38'$
 $ARC = 42.32'$
 $CHORD = S. 43^{\circ}43'43'' E. 42.10'$

C-2:
 $\Delta = 3^{\circ}12'12''$
 $R = 120.00'$
 $T = 3.35'$
 $ARC = 6.71'$
 $CHORD = S. 84^{\circ}04'52'' E. 6.71'$

C-3:
 $\Delta = 120^{\circ}06'04''$
 $R = 35.00'$
 $T = 60.75'$
 $ARC = 73.37'$
 $CHORD = N. 34^{\circ}16'00'' E. 60.65'$



DON L. BAUGHMAN AND JOY A. POOL
 ORIGINAL 101.87 AC.
 D.B. VOL. 367 PG. 713

DON L. BAUGHMAN
 7.296 AC.
 D.B. VOL. 359 PG. 628

666.66'

953.24'

- LEGEND
- Δ = R.R. SPIKE FOUND
 - \square = MAGNETIC NAIL FOUND
 - \circ = 5/8 INCH IRON BAR FOUND
 - \bullet = 5/8 INCH IRON BAR SET

SURVEY OF 0.616 ACRE IN SECTION 5, TOWN 3, RANGE 13, MIAMI TOWNSHIP, LOGAN COUNTY, OHIO FOR BRAD MUELLER ON MARCH 18, 1999

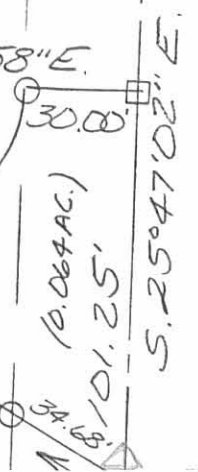


Leslie H. Geeslin
 LESLIE H. GEESLIN
 ZUSASYLVANIA, OH
 PH: (937) 468-2793
 FAX: (937) 468-2080

7549 ZP

JLB

STATE ROUTE 508 (60')



REC'D 12-23-97 JML OK ✓



Lee Surveying and Mapping Co., Inc.



Farm Surveys • Lot Surveys • Topography • Subdivisions • Construction Layout

117 NORTH MADRIVER STREET
BELLEFONTAINE, OHIO 43311

(937) 593-7335
FAX (937) 593-7444

MUELLER 7.296 ACRES

Lying in Section 5, Town 3, Range 13, Miami Township, Logan County, Ohio.

Being out of the Don L. Baughman and Joy A. Pool 101.87 acre tract as deeded and described in Volume 367, Page 713 of the Logan County Records of Deeds and being more particularly described as follows:

Beginning at a 5/8 inch iron rod found at the center of Section 5 on the south line of the Daniel P. Shough 16.585 acre tract (O.R. 26, Pg. 984).

THENCE, with the south line of the said 16.585 acre tract, N 84°-13'-15" W, a distance of 653.87 feet to a concrete post found on the east line of the Ralph E. Weeks, Trustee 18.87 acre tract (O.R. 233, Pgs. 56 and 62).

THENCE, with the east line of the said 18.87 acre tract, N 4°-40'-40" E, a distance of 503.62 feet to a 5/8 inch iron rod found at the TRUE POINT OF BEGINNING.

THENCE, with the east line of the said 18.87 acre tract, N 4°-46'-17" E, a distance of 261.39 feet to a 5/8 inch iron rod set.

THENCE, S 85°-40'-58" E, a distance of 1075.24 feet to a railroad spike set on the center-line of State Route 508, passing a 5/8 inch iron rod set at 1040.56 feet.

THENCE, with the center-line of State Route 508 (60 feet wide), S 25°-47'-02" E, a distance of 231.68 feet to a 1/2 inch iron rod found at an angle in the highway.

THENCE, continuing with the center-line of State Route 508, S 35°-03'-40" E, a distance of 112.62 feet to a railroad spike found at the northeast corner of the aforementioned 16.585 acre tract.

THENCE, with the north line of the said 16.585 acre tract, N 84°-30'-00" W, a distance of 1265.23 feet to the point of beginning.

Containing 7.296 acres, of which 0.236 acre is within the right-of-way of State Route 508.

The basis for bearings is the north line of the said Daniel P. Shough 16.585 acre tract, being N 84°-30'-00" W, and all other bearings and distances are from a field survey by Leslie H. Geeslin, Professional Surveyor 5248, on December 9, 1997.

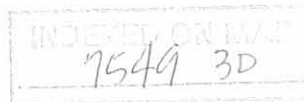
Description prepared by:

Jeffrey J. Lee
Professional Surveyor 6359
December 15, 1997



ORIGINAL STAMP IN GREEN

L-1454



RALPH E. WEEKS, TRUSTEE
18.87 ACRES
O.R. 233, PG. 56 AND 62

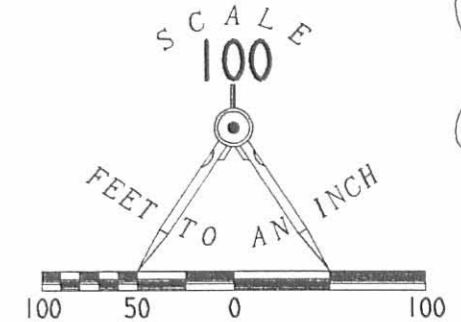
DON L. BAUGHMAN
AND JOY A. POOL
101.87 ACRES
VOL. 367, PG. 713

7.296 ACRES
OF WHICH 0.236 ACRE IS WITHIN
THE HIGHWAY RIGHT-OF-WAY

DANIEL P. SHOUGH
16.585 ACRES
O.R. 26, PG. 984

SURVEY OF 7.296 ACRES OUT
OF THE DON L. BAUGHMAN AND JOY A. POOL
ORIGINAL 101.87 ACRE TRACT
VOLUME 367, PAGE 713
SECTION 5, TOWN 3, RANGE 13
MIAMI TOWNSHIP
LOGAN COUNTY, OHIO

NOTE:
MAP WAS PREPARED FROM A SURVEY
PERFORMED BY LESLIE H. GEESLIN
PROFESSIONAL SURVEYOR 5248, ON
DECEMBER 9, 1997



- LEGEND
- 5/8" IRON ROD SET
 - 5/8" IRON ROD FOUND
 - ⊗ RAILROAD SPIKE SET
 - ⊕ RAILROAD SPIKE FOUND
 - ⊙ 1/2" IRON ROD FOUND
 - ⊞ HOUSE SITES
 - ⊛ CONC. POST



Jeffrey I. Lee
JEFFREY I. LEE
PROFESSIONAL SURVEYOR 6359
DECEMBER 9, 1997
COPYRIGHT 1997 BY:
LEE SURVEYING & MAPPING CO., INC.
117 North Madriver Street
BELLEFONTAINE, OHIO 43311
(937) 593-7335
D 320 MUELLER L-1454-3

REFERENCES
LOGAN COUNTY ENGINEER'S FILES:
R-3113, R-4958, R-5092
R-5592 AND R-7549

2 WORKING DAYS
BEFORE YOU DIG

CALL TOLL FREE **800-362-2764**
OHIO UTILITIES PROTECTION SERVICE.

INDEXED ON MAP
75493P

CENTER OF SECTION
POINT OF BEGINNING

N 4° 40' 40" E
503.62'

N 04° 46' 17" E
261.39'

S 85° 40' 58" E
1075.24' DRIVE

1265.23'
N 84° 30' 00" W

653.87'
N 84° 13' 15" W

34.68'

S 25° 47' 02" E
231.68'

S 35° 03' 40" E
112.62'

39.54'

STATE ROUTE 508 (60')

Received 8-12-86

OK 8-13-86 C.P.

Lee Surveying and Mapping Co.



Farm Surveys • Lot Surveys • Topography • Subdivisions • Construction Layout

855 EAST SANDUSKY AVENUE
BELLEFONTAINE, OHIO 43311

(513) 593-5780

CLAYTON M. LEE, P.S.
JEFFREY I. LEE, P.S.

DON BAUGHMAN, 16.585 ACRES

Lying in the north half of Section 5, T-3, R-13, Miami Township, Logan County, Ohio.

Being a part of that 101.87 acre tract in the name of Don Baughman as deeded and described in Volume 367, Page 713, Tract II of the Logan County Records of Deeds and being more particularly described as follows:

Beginning at a 5/8" iron rod set at a fence corner marking the center of Section 5, T-3, R-13 and also being the northeast corner of the Ralph Weeks 80 acre tract (Volume 210, Page 404).

THENCE, with the north line of said 80 acre tract, N 84°-13'-15" W, a distance of 653.87 feet to a concrete post marking the southeast corner of the Rockwell International 18.87 acre tract (Volume 400, Page 241).

THENCE, with the line between said 18.87 acres and the grantor's said 101.87 acres, N 4°-40'-40" E, a distance of 503.62 feet to a 5/8" iron rod.

THENCE, S 84°-30' E, a distance of 1265.26 feet to a railroad spike set on the old center-line of State Route 508 (Station 58+14.55 in county engineer's Field Book 582, Page 14).

THENCE, with the said center-line, the following 2 bearings and distances:
S 35°-01' E, 409.42 feet to a 'PK' nail.
S 46°-31'-10" E, 85.16 feet to a railroad spike.

THENCE, S 66°-56'-10" W, a distance of 288.24 feet to a 5/8" iron rod set 8.6 feet north of the quarter-section line.

THENCE, N 84°-56'-30" W, a distance of 684.15 feet to the point of beginning.

Containing 16.585 acres.

Prepared by:

Clayton M. Lee
Registered Professional Surveyor No. 6181
August 11, 1986

This description prepared from an actual field survey.



INDEXED ON MAP
7549 40

ORIGINAL STAMP IN GREEN
L-1454

ROCKWELL INT.
18.87 AC.
VOL. 400, PG. 241
N 4°-40'-40" E
503.62'

DON L. BAUGHMAN, 101.87 AC.
VOL. 367, PG. 713 (TRACT II)

S 84°-30" E
1265.26'

16.585 ACRES

COND. POST
N 84°-13'-15" W
653.87'

RALPH WEEKS
80 ACRES
VOL. 201, PG. 404

CENTER OF
SEC. 5, T-3, R-13
BEGINNING POINT

N 84°-56'-30" W
684.15'

STA. 57+02 (Co. ENGR. FB. 582, PG. 14)
FOUND 1/2" IRON ROD
39.46'

STA. 58+14.55
SET RR SPIKE
BEGIN POINT

BASIS FOR BEARINGS ← SCALE
1" = 200'

'PK' 62+24.7
32.70'
SET RR SPIKE

S 66°-56'-10" W
288.24'

1/4 SEC. LINE

S 46°-31'-10" E
1000.00'
STATE ROUTE 508

SURVEY OF 16.585 ACRES OUT OF THE
DON L. BAUGHMAN 101.87 ACRES (VOL. 367, PG. 713, TRACT II)
IN THE N 1/2 OF SEC. 5, T-3, R-13
MIAMI TOWNSHIP, LOGAN COUNTY, OHIO

By: *Jeffrey I. Lee*
JEFFREY I. LEE
REG. PROF. SURVEYOR 6359
AUG. 7, 1986



ORIGINAL STAMP IN GREEN

L-1454-4

INDEXED ON MAP
75494P

7-11-13

Lee Surveying and Mapping Co., Inc.



Land Surveys • Topography • Subdivisions • Construction Layout

117 N. Madriver St.
Bellefontaine OH 43311



Phone: (937) 593-7335
Fax: (937) 593-7444
surveys@lsminc.us

SHOUGH 1.505 ACRES

Lying in Section 5, Town 3, Range 13, Miami Township, Logan County, Ohio.

Being out of the Daniel P. Shough and Jean Francis Shough 16.585 acre tract as deeded and described in Official Record 26, Page 984 of the Logan County Records of Deeds and being more particularly described as follows:

Commencing on a 5/8 inch iron rod found on the west right-of-way of Ohio Route 508 and being the southeast corner of Lot 1 of Quail Ridge Subdivision (Plat Cabinet B, Slide 48B).

THENCE, with the south line of Lot 1 extended, S 85°-00'-56"E, a distance of 39.44 feet to a railroad spike found on the center-line of Ohio Route 508.

THENCE, with the center-line of Ohio Route 508 (60 feet wide), S 35°-29'-27"E, a distance of 150.00 feet to a MAG nail found at the TRUE POINT OF BEGINNING.

THENCE, with the center-line of Ohio Route 508, S 35°-29'-27"E, a distance of 224.93 feet to a MAG nail set.

THENCE, S 52°-57'-28"W, a distance of 136.23 feet to a 5/8 inch iron rod set, passing a 5/8 inch iron rod set at 30.01 feet.

THENCE, S 78°-48'-19"W, a distance of 121.16 feet to a 5/8 inch iron rod set.

THENCE, N 06°-02'-30"W, a distance of 160.03 feet to a 5/8 inch iron rod set.

THENCE, S 57°-09'-18"W, a distance of 92.36 feet to a 5/8 inch iron rod set.

THENCE, N 08°-58'-34"W, a distance of 201.60 feet to a 5/8 inch iron rod set.

THENCE, S 85°-00'-56"E, a distance of 223.75 feet to the point of beginning, passing a 5/8 inch iron rod found at 184.31 feet.

Containing 1.505 acres, of which 0.164 acre is within the highway right-of-way.

Property is subject to any and all previous easements and rights-of-way of record.

The basis for bearings is the center-line of Ohio Route 508, being S 35°-29'-27"E, and all other bearings are from angles and distances measured in a field survey by Lee Surveying and Mapping Co., Inc. on July 5, 2013.

Description prepared by:

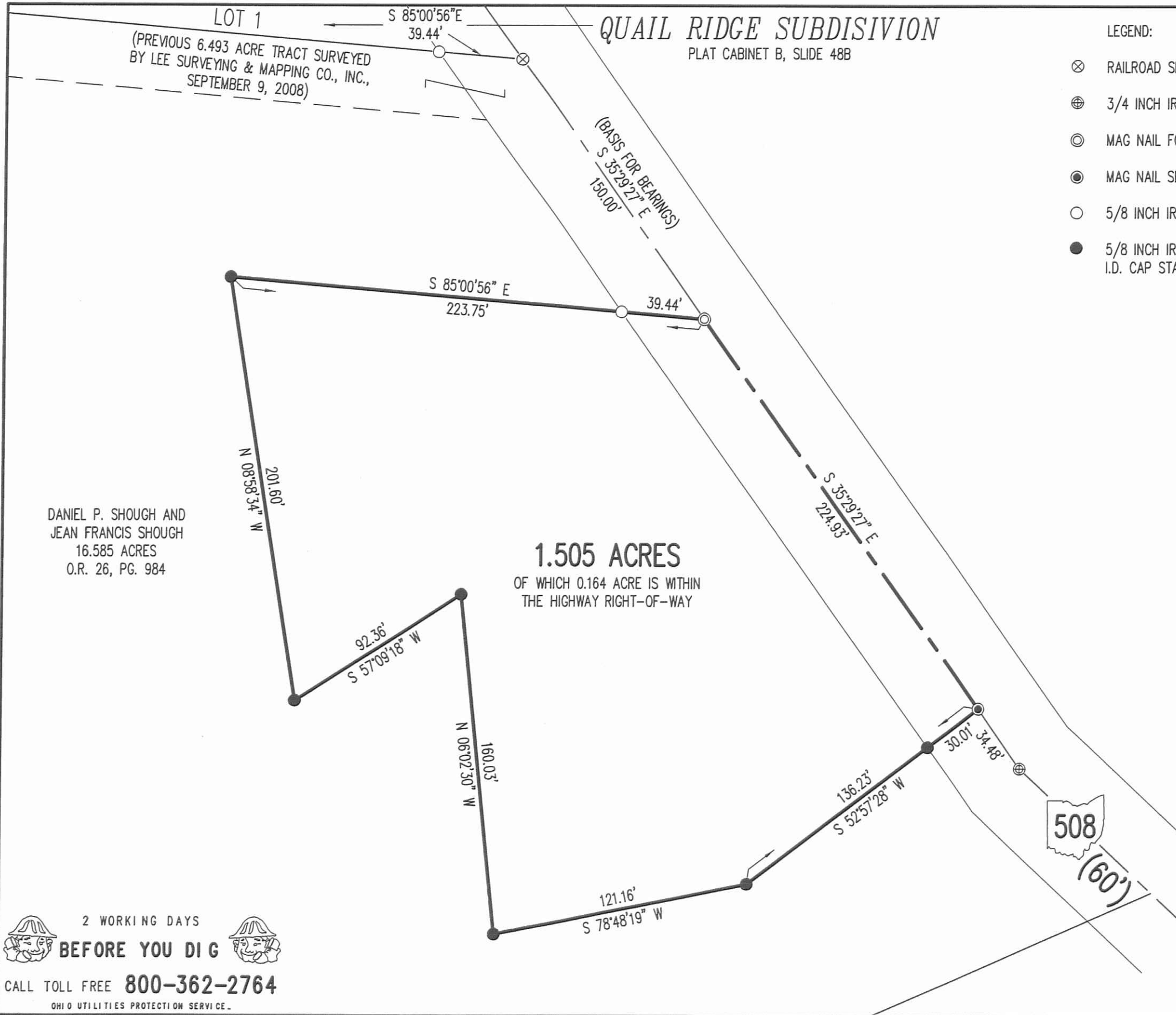
William K. Bruce
Professional Surveyor 7437
July 5, 2013



14540613

INDEXED ON MAP
7549 SD ORIGINAL STAMP IN GREEN

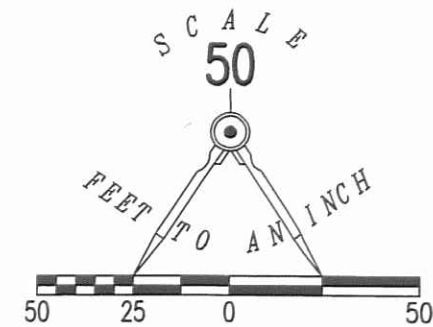
7-11-13
APPROVED



DANIEL P. SHOUGH AND
 JEAN FRANCIS SHOUGH
 16.585 ACRES
 O.R. 26, PG. 984

1.505 ACRES
 OF WHICH 0.164 ACRE IS WITHIN
 THE HIGHWAY RIGHT-OF-WAY

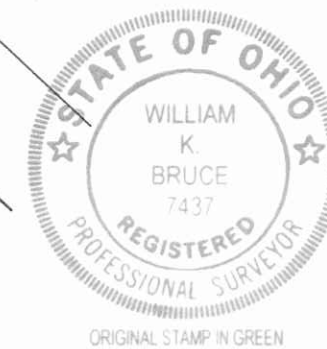
- LEGEND:
- ⊗ RAILROAD SPIKE FOUND
 - ⊕ 3/4 INCH IRON ROD FOUND
 - ⊙ MAG NAIL FOUND
 - MAG NAIL SET
 - 5/8 INCH IRON ROD FOUND
 - 5/8 INCH IRON ROD SET WITH PLASTIC I.D. CAP STAMPED "LSM 7437"



**SURVEY OF 1.505 ACRES OUT OF THE
 DANIEL P. SHOUGH AND
 JEAN FRANCIS SHOUGH
 16.585 ACRE TRACT
 OFFICIAL RECORD 26, PAGE 984
 SECTION 5, TOWN 3, RANGE 13
 MIAMI TOWNSHIP
 LOGAN COUNTY, OHIO**

SURVEYED BY:

William K. Bruce
 WILLIAM K. BRUCE
 PROFESSIONAL SURVEYOR 7437
 JULY 5, 2013



COPYRIGHT 2013 BY:
LEE SURVEYING & MAPPING CO., INC.
 117 North Madriver Street
 BELLEFONTAINE, OHIO 43311
 (937) 593-7335
 WWW.LSMINC.US
 surveys@lsminc.us

KSS D0613 14540613 L-1454-3

2 WORKING DAYS
BEFORE YOU DIG
 CALL TOLL FREE **800-362-2764**
 OHIO UTILITIES PROTECTION SERVICE

INDEXED ON MAP
 7549 SP