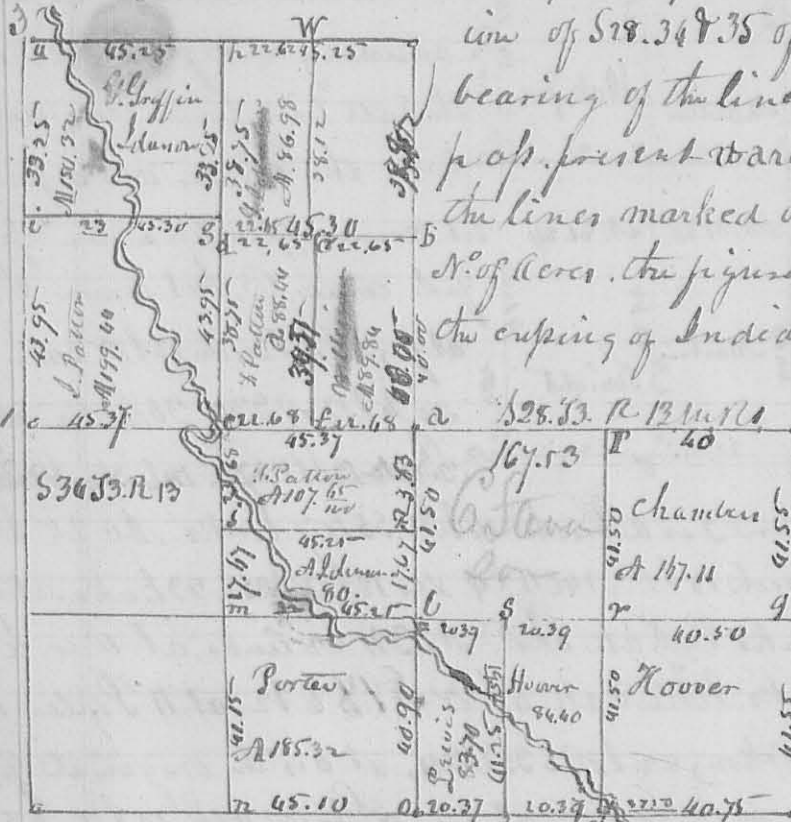


N^o 248

S35 T.3. R.13. W.1/4

This plat represents the Survey & Sub. division of S28.34 & 35 of T.3. R.13. W.1/4. Original bearing of the lines due course by the Comp. of present variation 7° E. the length of the lines marked on the plat together with the N. of Acres. the figures with - under them show the cupping of Indian Creek which passes through them. Description of

8330



them. Description of
 Corners: at \bar{c} Beech 20 \bar{d}
 North 4 links. an do \bar{e} \bar{f}
 57 \bar{g} 28 links. at \bar{g} Gray ash
 30 \bar{h} \bar{i} 30 \bar{j} 18 links. \bar{k} \bar{l}
 4 \bar{m} 54 \bar{n} 8 links. & Beech 18
 \bar{o} \bar{p} 14 \bar{q} 17 links. do 18
 \bar{r} \bar{s} 2 \bar{t} 2 \bar{u} 2 \bar{v} 2 \bar{w} 2 \bar{x} 2 \bar{y} 2 \bar{z} 2

Lynn 20 \bar{b} 57 \bar{c} 33 links Sugar 15 \bar{d} 57 \bar{e} 45. at \bar{f} Beech 18 \bar{g} 53 \bar{h} \bar{i}
 and same 15 \bar{j} \bar{k} 48 \bar{l} 5 links. \bar{m} orig. \bar{n} \bar{o} \bar{p} \bar{q} \bar{r} \bar{s} \bar{t} \bar{u} \bar{v} \bar{w} \bar{x} \bar{y} \bar{z}
 figures \bar{a} \bar{b} \bar{c} \bar{d} \bar{e} \bar{f} \bar{g} \bar{h} \bar{i} \bar{j} \bar{k} \bar{l} \bar{m} \bar{n} \bar{o} \bar{p} \bar{q} \bar{r} \bar{s} \bar{t} \bar{u} \bar{v} \bar{w} \bar{x} \bar{y} \bar{z}
 5 links \bar{a} \bar{b} \bar{c} \bar{d} \bar{e} \bar{f} \bar{g} \bar{h} \bar{i} \bar{j} \bar{k} \bar{l} \bar{m} \bar{n} \bar{o} \bar{p} \bar{q} \bar{r} \bar{s} \bar{t} \bar{u} \bar{v} \bar{w} \bar{x} \bar{y} \bar{z}
 at \bar{c} Beech 10 \bar{d} 12 \bar{e} 25 same 12 \bar{f} \bar{g} 15 \bar{h} 23 links. at \bar{i} Beech \bar{j} \bar{k} \bar{l} \bar{m} \bar{n} \bar{o} \bar{p} \bar{q} \bar{r} \bar{s} \bar{t} \bar{u} \bar{v} \bar{w} \bar{x} \bar{y} \bar{z}
 Elow \bar{a} \bar{b} \bar{c} \bar{d} \bar{e} \bar{f} \bar{g} \bar{h} \bar{i} \bar{j} \bar{k} \bar{l} \bar{m} \bar{n} \bar{o} \bar{p} \bar{q} \bar{r} \bar{s} \bar{t} \bar{u} \bar{v} \bar{w} \bar{x} \bar{y} \bar{z}
 Post. \bar{a} \bar{b} \bar{c} \bar{d} \bar{e} \bar{f} \bar{g} \bar{h} \bar{i} \bar{j} \bar{k} \bar{l} \bar{m} \bar{n} \bar{o} \bar{p} \bar{q} \bar{r} \bar{s} \bar{t} \bar{u} \bar{v} \bar{w} \bar{x} \bar{y} \bar{z}
 ash \bar{a} \bar{b} \bar{c} \bar{d} \bar{e} \bar{f} \bar{g} \bar{h} \bar{i} \bar{j} \bar{k} \bar{l} \bar{m} \bar{n} \bar{o} \bar{p} \bar{q} \bar{r} \bar{s} \bar{t} \bar{u} \bar{v} \bar{w} \bar{x} \bar{y} \bar{z}
 and same 12 \bar{a} \bar{b} \bar{c} \bar{d} \bar{e} \bar{f} \bar{g} \bar{h} \bar{i} \bar{j} \bar{k} \bar{l} \bar{m} \bar{n} \bar{o} \bar{p} \bar{q} \bar{r} \bar{s} \bar{t} \bar{u} \bar{v} \bar{w} \bar{x} \bar{y} \bar{z}
 12 \bar{a} \bar{b} \bar{c} \bar{d} \bar{e} \bar{f} \bar{g} \bar{h} \bar{i} \bar{j} \bar{k} \bar{l} \bar{m} \bar{n} \bar{o} \bar{p} \bar{q} \bar{r} \bar{s} \bar{t} \bar{u} \bar{v} \bar{w} \bar{x} \bar{y} \bar{z}
 91 \bar{a} \bar{b} \bar{c} \bar{d} \bar{e} \bar{f} \bar{g} \bar{h} \bar{i} \bar{j} \bar{k} \bar{l} \bar{m} \bar{n} \bar{o} \bar{p} \bar{q} \bar{r} \bar{s} \bar{t} \bar{u} \bar{v} \bar{w} \bar{x} \bar{y} \bar{z}
 24 \bar{a} \bar{b} \bar{c} \bar{d} \bar{e} \bar{f} \bar{g} \bar{h} \bar{i} \bar{j} \bar{k} \bar{l} \bar{m} \bar{n} \bar{o} \bar{p} \bar{q} \bar{r} \bar{s} \bar{t} \bar{u} \bar{v} \bar{w} \bar{x} \bar{y} \bar{z}
 Water Beech 4 \bar{a} \bar{b} \bar{c} \bar{d} \bar{e} \bar{f} \bar{g} \bar{h} \bar{i} \bar{j} \bar{k} \bar{l} \bar{m} \bar{n} \bar{o} \bar{p} \bar{q} \bar{r} \bar{s} \bar{t} \bar{u} \bar{v} \bar{w} \bar{x} \bar{y} \bar{z}
 a \bar{a} \bar{b} \bar{c} \bar{d} \bar{e} \bar{f} \bar{g} \bar{h} \bar{i} \bar{j} \bar{k} \bar{l} \bar{m} \bar{n} \bar{o} \bar{p} \bar{q} \bar{r} \bar{s} \bar{t} \bar{u} \bar{v} \bar{w} \bar{x} \bar{y} \bar{z}
 \bar{a} \bar{b} \bar{c} \bar{d} \bar{e} \bar{f} \bar{g} \bar{h} \bar{i} \bar{j} \bar{k} \bar{l} \bar{m} \bar{n} \bar{o} \bar{p} \bar{q} \bar{r} \bar{s} \bar{t} \bar{u} \bar{v} \bar{w} \bar{x} \bar{y} \bar{z}
 \bar{a} \bar{b} \bar{c} \bar{d} \bar{e} \bar{f} \bar{g} \bar{h} \bar{i} \bar{j} \bar{k} \bar{l} \bar{m} \bar{n} \bar{o} \bar{p} \bar{q} \bar{r} \bar{s} \bar{t} \bar{u} \bar{v} \bar{w} \bar{x} \bar{y} \bar{z}

Oct. 1834

David Hopkins Land Surveyor

N^o 249

Oct. 1834 Surveyed for William John Lewis town Resins. part of
 S36. T.6. S. R. 82 beginning on the north line of said lot at the \bar{a} \bar{b} \bar{c} \bar{d} \bar{e} \bar{f} \bar{g} \bar{h} \bar{i} \bar{j} \bar{k} \bar{l} \bar{m} \bar{n} \bar{o} \bar{p} \bar{q} \bar{r} \bar{s} \bar{t} \bar{u} \bar{v} \bar{w} \bar{x} \bar{y} \bar{z}
 Post. thence \bar{a} \bar{b} \bar{c} \bar{d} \bar{e} \bar{f} \bar{g} \bar{h} \bar{i} \bar{j} \bar{k} \bar{l} \bar{m} \bar{n} \bar{o} \bar{p} \bar{q} \bar{r} \bar{s} \bar{t} \bar{u} \bar{v} \bar{w} \bar{x} \bar{y} \bar{z}
 18 \bar{a} \bar{b} \bar{c} \bar{d} \bar{e} \bar{f} \bar{g} \bar{h} \bar{i} \bar{j} \bar{k} \bar{l} \bar{m} \bar{n} \bar{o} \bar{p} \bar{q} \bar{r} \bar{s} \bar{t} \bar{u} \bar{v} \bar{w} \bar{x} \bar{y} \bar{z}
 Hickory 12 \bar{a} \bar{b} \bar{c} \bar{d} \bar{e} \bar{f} \bar{g} \bar{h} \bar{i} \bar{j} \bar{k} \bar{l} \bar{m} \bar{n} \bar{o} \bar{p} \bar{q} \bar{r} \bar{s} \bar{t} \bar{u} \bar{v} \bar{w} \bar{x} \bar{y} \bar{z}
 Forked Elm \bar{a} \bar{b} \bar{c} \bar{d} \bar{e} \bar{f} \bar{g} \bar{h} \bar{i} \bar{j} \bar{k} \bar{l} \bar{m} \bar{n} \bar{o} \bar{p} \bar{q} \bar{r} \bar{s} \bar{t} \bar{u} \bar{v} \bar{w} \bar{x} \bar{y} \bar{z}
 corner thence \bar{a} \bar{b} \bar{c} \bar{d} \bar{e} \bar{f} \bar{g} \bar{h} \bar{i} \bar{j} \bar{k} \bar{l} \bar{m} \bar{n} \bar{o} \bar{p} \bar{q} \bar{r} \bar{s} \bar{t} \bar{u} \bar{v} \bar{w} \bar{x} \bar{y} \bar{z}
 18 \bar{a} \bar{b} \bar{c} \bar{d} \bar{e} \bar{f} \bar{g} \bar{h} \bar{i} \bar{j} \bar{k} \bar{l} \bar{m} \bar{n} \bar{o} \bar{p} \bar{q} \bar{r} \bar{s} \bar{t} \bar{u} \bar{v} \bar{w} \bar{x} \bar{y} \bar{z}
 to the beginning \bar{a} \bar{b} \bar{c} \bar{d} \bar{e} \bar{f} \bar{g} \bar{h} \bar{i} \bar{j} \bar{k} \bar{l} \bar{m} \bar{n} \bar{o} \bar{p} \bar{q} \bar{r} \bar{s} \bar{t} \bar{u} \bar{v} \bar{w} \bar{x} \bar{y} \bar{z}
 101.93

8331