

Trails Recorded

N<sup>o</sup> 416

Survey

8431

Survey April 30. 1838 for Daniel K. Colvin part of Military Survey N<sup>o</sup> 9989. Beginning at an Ash South East corner to the original Survey (also 2<sup>nd</sup> run) thence N 11<sup>o</sup> W 100 poles to a Sargo Ash; thence S 78<sup>o</sup> W 80<sup>o</sup> poles to a Beech & Sugar thence S 11<sup>o</sup> E 98 poles to a stake thence N 77<sup>o</sup> E 80 poles to the beginning containing 2<sup>nd</sup> run.

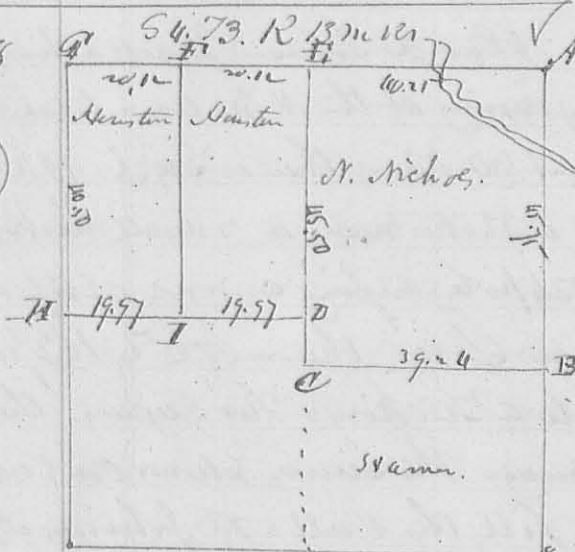
D. Hoffman A. S. W. S. C.

N<sup>o</sup> 417

Survey May 29. 1838 for Andrew Roberts part of Survey 9889. Beginning at a Sargo & Beech Patent call for a stake thence N 11<sup>o</sup> W 200 poles crossing a Creek at 128 poles to 2 Sugar (New Cut down) being the beginning call of the Patent thence N 78<sup>o</sup> E 107 poles back at 20 poles to a Beech & Cypress the Cypress down; thence S 10<sup>o</sup> E 200 poles to a Beech thence S 7<sup>o</sup> E 105 poles crossing run at 14 poles back at 45 & 60 poles to the beginning.

D. Hoffman A. S. W. S. C.

N<sup>o</sup> 418



Corner.

- A. White Oak 12 S. D. N 68 W 30 Links
- B. ditto 10 " " N 55 E 20 "
- B. Stump in a drain
- C. White Oak 20 S. D. N 80 E W 33. "
- D. Bl. Walnut 3 " " S 59 E 17 1/2 "
- Bl. Oak 8 " " N 57 W 61 "
- III ditto 12 " " N 58 E 50 "
- Hickory 15 " " N 17 1/2 W 33 "
- F. Stake.

G. Red Elm 5 S. D. South 27 Links down and gone. (plate-stump)  
 Bl. Walnut 10 S. D. N 57 W 23 Links.  
 H. Sack Oak 6. S 48<sup>o</sup> W 57 Links. Elm 12 S. D. N 80 E 61 Links (Stump)  
 D. Stump & White Oak 12 S. D. N 30<sup>o</sup> E 57 Links and White O 15 S. D. N 61<sup>o</sup> W 95  
 then Beginning at C. thence ~~Call~~ ditto stump & white oak 20 S. D.  
 N 13<sup>o</sup> E 75 Links; thence N 24<sup>o</sup> E 16 ch to a stump thence N 52<sup>o</sup> E 10.50 Links  
 to a Sargo stump thence N 45 W 7.88 ch to a Bl. Walnut 12 S. D. S 29 E  
 37 Links; thence on a Walnut 12 S. D. N 29 1/2 E 42 Links thence

