



Lee Surveying and Mapping Co.



Farm Surveys • Lot Surveys • Topography • Subdivisions • Construction Layout

143 EAST COLUMBUS AVENUE
BELLEFONTAINE, OHIO 43311

(513) 593-7335

JEFFREY I. LEE, P.S.

CARTER 16.106 ACRES

Lying in Section 21, Town 1, Range 8, Miami Township, Logan County, Ohio.

Being out of the Jimmie A. Carter 72.0 acre tract as deeded and described in Volume 305, Page 909 of the Logan County Records of Deeds and being more particularly described as follows:

Beginning at a stone found at the northeast corner of said Section 21.

THENCE, with the east line of Section 21, S 1°-00'-00" E, a distance of 1834.00 feet to a 5/8 inch iron rod set at the northeast corner of the said 72.0 acre tract and the TRUE POINT OF BEGINNING.

THENCE, with the east line of Section 21 and the west line of the Ronald E. Furrow 68.005 acre tract (Vol. 302, Pg. 209), S 1°-00'-00" E, a distance of 1416.75 feet to a point at the low water line of the north side of the Great Miami River, passing a railroad spike set on the center-line of County Highway 73 (60 feet wide) at 1220.08 feet and passing a 5/8 inch iron rod set for reference at 1404.75 feet.

THENCE, with the north low water line of the Great Miami River the following three courses:

N 79°-29'-30" W, a distance of 172.80 feet to a point that is S 8°-54'-31" W, a distance of 12.00 feet from a 5/8 inch iron rod set for reference.

N 82°-48'-23" W, a distance of 203.02 feet to a point that is S 00°-51'-13" E, a distance of 12.00 feet from a 5/8 inch iron rod set for reference.

S 78°-58'-37" W, a distance of 245.96 feet to a point.

THENCE, N 1°-26'-18" E, a distance of 275.53 feet to a railroad spike set on the center-line of County Highway 73, passing a 5/8 inch iron rod set for reference at 20.00 feet.

THENCE, N 10°-36'-05" E, a distance of 1147.34 feet to a 5/8 inch iron rod set.

THENCE, with the south line of the Ruby Jane Leiss Murphy 106.72 acre tract (Vol. 391, Pg. 227), N 89°-30'-00" E, a distance of 370.00 feet to the point of beginning.

Containing 16.106 acres of which 0.844 acre is within the highway right-of-way.

The basis for bearings is based upon the east line of Section 21 being S 1°-00'-00" E, and all other bearings are from angles and distances measured in a field survey by Lee Surveying and Mapping Company on March 1, 1994.

Description prepared by:

Jeffrey I. Lee
Professional Surveyor 6359
March 4, 1994



L 2164

INDEXED ON MAP
8881 1D

ORIGINAL STAMP IN GREEN

SECTION 16 SECTION 15

PLEASANT TOWNSHIP
MIAMI TOWNSHIP

LINE	BEARING	DISTANCE
L 1	S 08° 54' 31" W	12.00'
L 2	S 00° 51' 13" E	12.00'

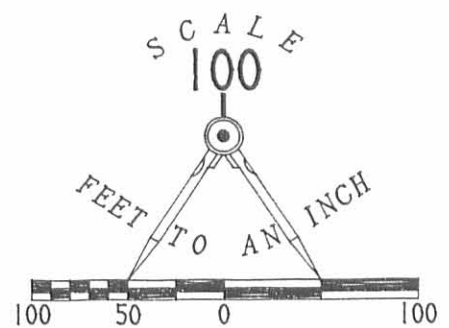
RONALD EUGENE FURROW
68.005 ACRES
VOL. 302. PAGE 209

RONALD EUGENE FURROW
68.005 ACRES
VOL. 302. PAGE 209

SECTION 22
SECTION 21

16.106 ACRES

(OF WHICH 0.844 ACRE IS WITHIN
THE HIGHWAY RIGHT-OF-WAY)



RUBY JANE LEISS MURPHY
106.72 ACRES
VOL. 391. PAGE 227

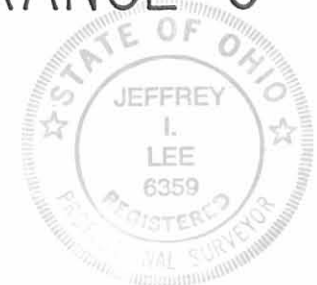
JIMMIE A. CARTER
72 ACRES
VOL. 305. PAGE 909

JIMMIE A. CARTER
72 ACRES
VOL. 305. PAGE 909

LEGEND

- ☒ STONE FOUND
- ⊙ 12" DIAMETER CONCRETE FILLED METAL POST
- ⊕ RAILROAD SPIKE SET
- 5/8" IRON ROD SET

SURVEY OF 16.106 ACRES OUT OF THE
JIMMIE A. CARTER, 72 ACRES
VOLUME 305, PAGE 909
SECTION 21, TOWN 1, RANGE 8
MIAMI TOWNSHIP
LOGAN COUNTY
OHIO



SURVEYED BY
[Signature]
JEFFREY I. LEE
PROFESSIONAL SURVEYOR 6359
MARCH 1, 1994

LEE SURVEYING & MAPPING CO.
143 East Columbus Avenue
BELLEFONTAINE, OHIO 43311
(513) 593-7335

2 WORKING DAYS
BEFORE YOU DIG
CALL TOLL FREE **800-362-2764**
OHIO UTILITIES PROTECTION SERVICE

INDEXED ON MAP
88811P

D233 JCARTER L 2164-3



Lee Surveying and Mapping Co.



Farm Surveys • Lot Surveys • Topography • Subdivisions • Construction Layout

143 EAST COLUMBUS AVENUE
BELLEFONTAINE, OHIO 43311

(513) 593-7335

JEFFREY I. LEE, P.S.

FRIEDERS 56.510 ACRES

Lying in Fractional Section 21, Town 1, Range 8, Miami Township, Logan County, Ohio.

Being out of the John P. Frieders 72.0 acre tract as deeded and described in Official Record 229, Page 542, Tracts I and II of the Logan County Records of Deeds and being more particularly described as follows:

Beginning at a stone found at the northeast corner of said Section 21 and the northeast corner of the Ruby Jane Leiss Murphy 106.72 acre tract (Vol. 391, Pg. 227).

THENCE, with the north line of Section 21, S 89°-18'-40" W,, a distance of 677.16 feet to a 5/8 inch iron rod found at the TRUE POINT OF BEGINNING.

THENCE, with the west line of the said 106.72 acre tract, S 1°-13'-37" E, a distance of 1831.84 feet to a 5/8 inch iron rod set.

THENCE, with the south line of the said 106.72 acre tract, N 89°-30'-00" E, a distance of 299.92 feet to a 5/8 inch iron rod found.

THENCE, through the said 72.0 acre tract the following two courses:
S 10°-36'-05" W, a distance of 1147.34 feet to a railroad spike found on the center-line of County Highway 73 (60 feet right-of-way width).

S 1°-26'-18" W, a distance of 275.53 feet to a point at the low water line of the north side of the Great Miami River, south line of the said 72.0 acre tract, and the south line of Fractional Section 21, passing a 5/8 inch iron rod set for reference at 255.53 feet.

THENCE, with the north low water line of the Great Miami River the following two courses:

S 59°-50'-43" W, a distance of 522.59 feet to a point referenced by a 5/8 inch iron rod set N 12°-11'-11" W, a distance of 11.54 feet.

S 74°-38'-37" W, a distance of 265.83 feet to a point at the southwest corner of the said 72.0 acre tract.

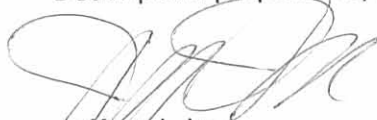
THENCE, with the east line of the Holmes E. Bell 105.61 acre tract (Vol. 293, Pg. 546), N 0°-52'-55" W, a distance of 3557.62 feet to a 5/8 inch iron rod set at the northwest corner of the said 72.0 acre tract, passing a 5/8 inch iron rod set for reference at 12.00 feet and a railroad spike set on the center-line of County Highway 73 at 370.25 feet.

THENCE, with the north line of Section 21, N 89°-18'-40" E, a distance of 641.88 feet to the point of beginning.

Containing 56.510 acres of which 1.052 acres are within the highway right-of-way.

The basis for bearings is based upon the east line of Section 21 being S 1°-00'-00" E, and all other bearings are from angles and distances measured in a field survey by Lee Surveying and Mapping Company on June 13, 1994.

Description prepared by:


Jeffrey I. Lee
Professional Surveyor 6359
June 21, 1994

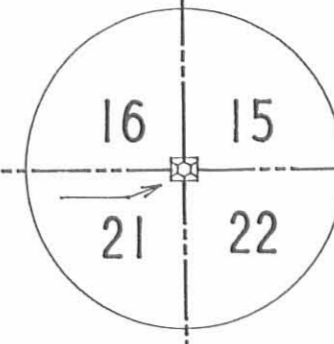


L 2164

ORIGINAL STAMP IN GREEN

INDEXED ON MAP
8801 2D

KAREN K. NICHOLS
21.097 ACRES
O.R. 190, PG. 176



PLEASANT TOWNSHIP
MIAMI TOWNSHIP

SECTION LINE

S 89° 18' 40" W
677.16'

N 89° 18' 40" E
3957.12'

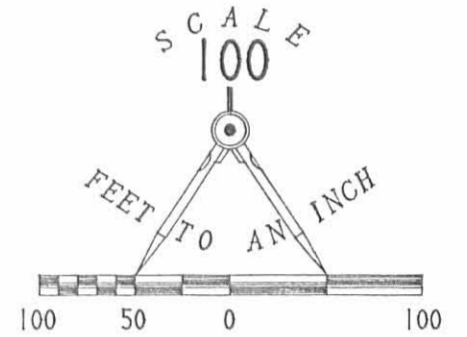
N 89° 18' 40" E
641.88'

HOLMES E. BELL
105.61 ACRES
VOL. 293, PG. 546

56.510 ACRES
OF WHICH 1.052 ACRES ARE WITHIN
THE HIGHWAY RIGHT-OF-WAY.

RUBY JANE LEISS MURPHY
106.72 ACRES
VOL. 391, PG. 227

JOHN P. FRIEDERS
72 ACRES
O.R. 229, PG. 542

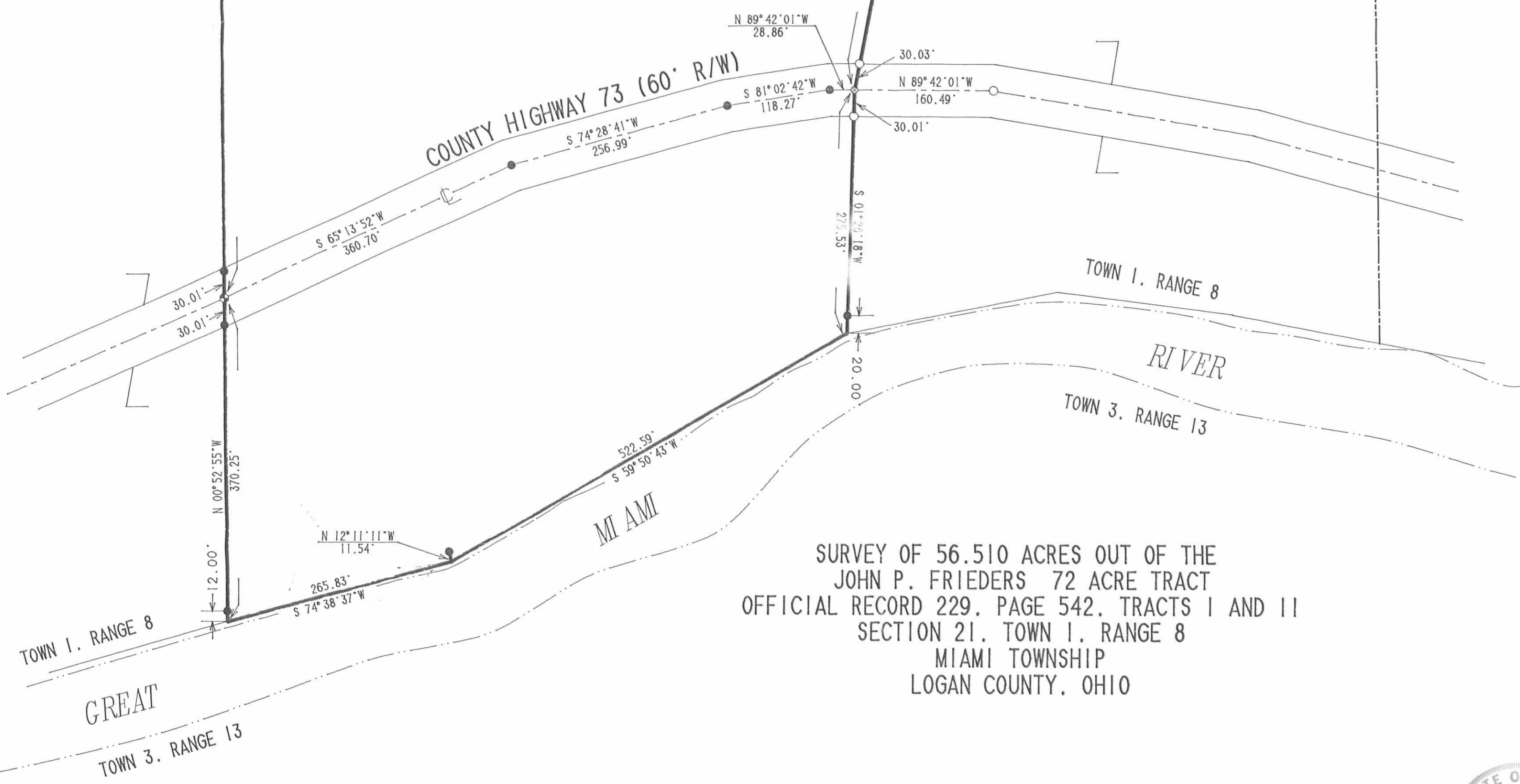


LEGEND

- 5/8" IRON ROD SET
- ⊙ RAILROAD SPIKE SET
- 5/8" IRON ROD FOUND
- ⊙ RAILROAD SPIKE FOUND
- ⊠ STONE FOUND
- ⊠ 5/8" IRON ROD W/ LOGAN CO. ENG. I.D. CAP IN MONUMENT BOX FOUND.
- LINE NOT DRAWN TO SCALE

REFERENCES

- 1.) LOGAN COUNTY ENGINEERS F.B. 655, PG. 11 AND F.B. 589, PG. 60.
- 2.) LOGAN COUNTY ENGINEER BOOK "D", PG. 18 AND BOOK "A", PG. 223.
- 3.) LOGAN COUNTY ENGINEER MAP ROOM, FILE NUMBER 950.



SURVEY OF 56.510 ACRES OUT OF THE
JOHN P. FRIEDERS 72 ACRE TRACT
OFFICIAL RECORD 229, PAGE 542, TRACTS I AND II
SECTION 21, TOWN 1, RANGE 8
MIAMI TOWNSHIP
LOGAN COUNTY, OHIO

TOWN 1, RANGE 8
TOWN 3, RANGE 13
GREAT MIAMI RIVER



SURVEYED BY:
JEFFREY L. LEE
PROFESSIONAL SURVEYOR 6359
JUNE 13, 1994

LEE SURVEYING & MAPPING CO.
143 East Columbus Avenue
BELLEFONTAINE, OHIO 43311
(513) 593-7335
D 240 JCARTER2 L-2164-1

2 WORKING DAYS
BEFORE YOU DIG
CALL TOLL FREE 800-362-2764
OHIO UTILITIES PROTECTION SERVICE

INDEXED ON MAP
2001 2P

ORIGINAL STAMP IN GREEN