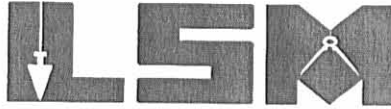


# Lee Surveying and Mapping Co., Inc.

Land Surveys • Topography • Subdivisions • Construction Layout

117 N. Madriver St.  
Bellefontaine OH 43311



Phone: (937) 593-7335  
Fax: (937) 593-7444

## DAVIDSON 1.860 ACRES

Lying in Section 22, Town 1, Range 8, Miami Township, Logan County, Ohio.

Being out of the Martha J. Davidson original 41-1/2 acre tract as deeded and described in Official Record 301, Page 312, Tract I of the Logan County records of Deeds and being more particularly described as follows:

Beginning at a railroad spike found at the intersection of the center-lines of County Highway 255 and Ohio Route 235.

THENCE, with the center-line of County Highway 255, S 1°-04'-35" W, a distance of 49.58 feet to a MAG nail set at the TRUE POINT OF BEGINNING.

THENCE, S 88°-55'-25" E, a distance of 270.00 feet to a 5/8 inch iron rod set, passing a 5/8 inch iron rod set at 30.00 feet.

THENCE, S 1°-04'-35" W, a distance of 300.00 feet to a 5/8 inch iron rod set.

THENCE, N 88°-55'-25" W, a distance of 270.00 feet to a MAG nail set, passing a 5/8 inch iron rod set at 240.00 feet.


THENCE, with the center-line of County Highway 255, N 1°-04'-35" E, a distance of 300.00 feet to the point of beginning.

Containing 1.860 acres, of which 0.207 acre is within the highway right-of-way.

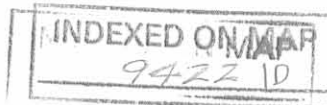
The basis for bearings is the center-line of County Highway 255, N 1°-04'-35" E, and all other bearings are from angles and distances measured in a field survey by Lee Surveying and Mapping Co., Inc. on December 6, 2002.

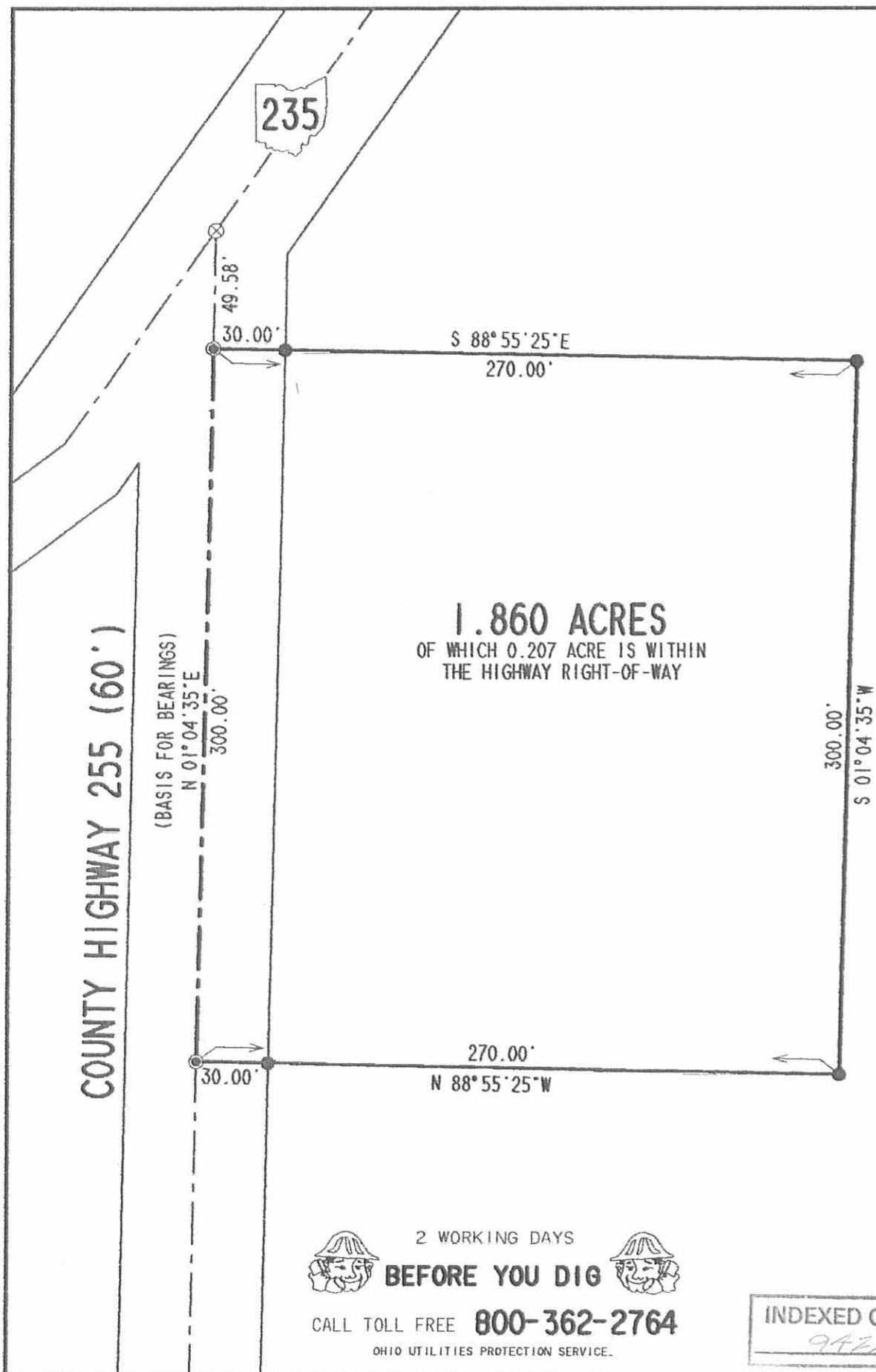
Description prepared by:



  
Jeffrey I. Lee  
Professional Surveyor 6359  
December 6, 2002

L-1089



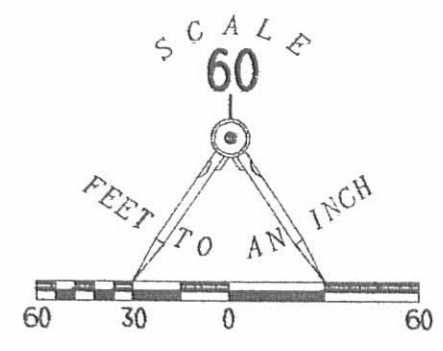


**1.860 ACRES**  
 OF WHICH 0.207 ACRE IS WITHIN  
 THE HIGHWAY RIGHT-OF-WAY

MARTHA J. DAVIDSON  
 ORIG. 41-1/2 ACRES  
 O.R. 301, PG. 312  
 TRACT 1

**LEGEND**

- 5/8 INCH IRON ROD SET
- ⊙ MAG NAIL SET
- ⊗ RAILROAD SPIKE FOUND



**SURVEY OF 1.860 ACRES OUT  
 OF THE MARTHA J. DAVIDSON  
 ORIGINAL 41-1/2 ACRE TRACT  
 OFFICIAL RECORD 301, PAGE 312  
 TRACT 1  
 SECTION 22, TOWN 1, RANGE 8  
 MIAMI TOWNSHIP  
 LOGAN COUNTY, OHIO**

COUNTY HIGHWAY 255 (60')

(BASIS FOR BEARINGS)  
 N 01° 04' 35" E

2 WORKING DAYS  
**BEFORE YOU DIG**  
 CALL TOLL FREE **800-362-2764**  
 OHIO UTILITIES PROTECTION SERVICE.

INDEXED ON MAP  
 9422 IP



ORIGINAL STAMP IN GREEN

SURVEYED BY:  
  
 JEFFREY I. LEE  
 PROFESSIONAL SURVEYOR 6359  
 DECEMBER 6, 2002

COPYRIGHT 2002 BY:  
**LEE SURVEYING & MAPPING CO., INC.**  
 117 North Madriver Street  
 BELLEFONTAINE, OHIO 43311  
 (937) 593-7335