

REV'D 9-1-05 GMM OL

Lee Surveying and Mapping Co., Inc.

Land Surveys • Topography • Subdivisions • Construction Layout

117 N. Madriver St.
Bellefontaine OH 43311



Phone: (937) 593-7335
Fax: (937) 593-7444

1975 - 2005 - 30 YEARS OF EXCELLENCE
SWANK
106.095 ACRES

Lying in Section 21, Town 1, Range 8, Miami Township, Logan County, Ohio.

Being all of the Terrel L. Swank and Joan K. Swank original 105.61 acre tract as deeded and described in Official Record 316, Page 746 of the Logan County Records of Deeds and being more particularly described as follows:

Beginning at a stone found at the northeast corner of Section 21.

THENCE, with the north line of Section 21, the north line of Miami Township and the south line of the Karen K. Nichols 21.097 acre tract (O.R. 190, Pg. 176), S 89°-18'-40"W, a distance of 1319.04 feet to a 5/8 inch iron rod found at THE TRUE POINT OF BEGINNING.

THENCE, with the west line of the John P. Frieders and Kay A. Frieders 72 acre tract (O.R. 229, Pg. 542 Tract I and Tract II), S 0°-52'-55"E, a distance of 3587.62 feet to a point on the center-line of the Great Miami River, passing 5/8 inch iron rods set at 3154.56 feet, 3220.18 feet, a railroad spike set on the center-line of County Highway 73 (50 feet wide) at 3187.37 feet, and a 5/8 inch iron rod found at 3545.62 feet.

THENCE, with the south line of fractional Section 21 and the center-line of the Great Miami River the following two courses:

S 77°-47'-16"W, a distance of 1158.45 feet to a point, referenced by a 5/8 inch iron rod set
N 4°-14'-12"E, a distance of 43.00 feet.

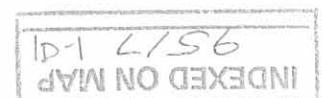
N 40°-27'-36"W, a distance of 246.49 feet to a point.

THENCE, with the lines of the Laura R. Bell 110.27 acre tract, (O.R. 231, Pg. 948), the following three courses:

N 1°-18'-01"W, a distance of 2959.09 feet to a 5/8 inch iron rod set, passing 5/8 inch iron rods set at 63.99 feet, 365.60 feet and 417.86 feet and passing a MAG nail set on the center-line of County Highway 73 at 391.73 feet.

N 89°-18'-40"E, a distance of 325.08 feet to a 5/8 inch iron rod set.

N 1°-18'-01"W, a distance of 670.69 feet to a 5/8 inch iron rod set.



Lee Surveying and Mapping Co., Inc.

Land Surveys • Topography • Subdivisions • Construction Layout

117 N. Madriver St.
Bellefontaine OH 43311



Phone: (937) 593-7335
Fax: (937) 593-7444

1975 - 2005 - 30 YEARS OF EXCELLENCE

THENCE, with the north line of Section 21, the north line of Miami Township and the south line of W. James McBrien 16.893 (O.R. 126, Pg. 186 Tract I), and the south line of the David E. Richardson 5.00 acre tract (Vol. 303, Pg. 730), N 89°-18'-40"E, a distance of 994.35 feet to the point of beginning.

Containing 106.095 acres of which 1.542 acres are within the highway right-of-way and 1.3 +/- acres are in the floodway of the Great Miami River.

The basis for bearings is the north line of Section 21 being N 89°-18'-40"E, and all other bearings are from angles and distances measured in a field survey by Lee Surveying and Mapping Co., Inc. on August 25, 2005.

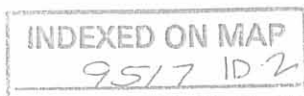


Description prepared by:

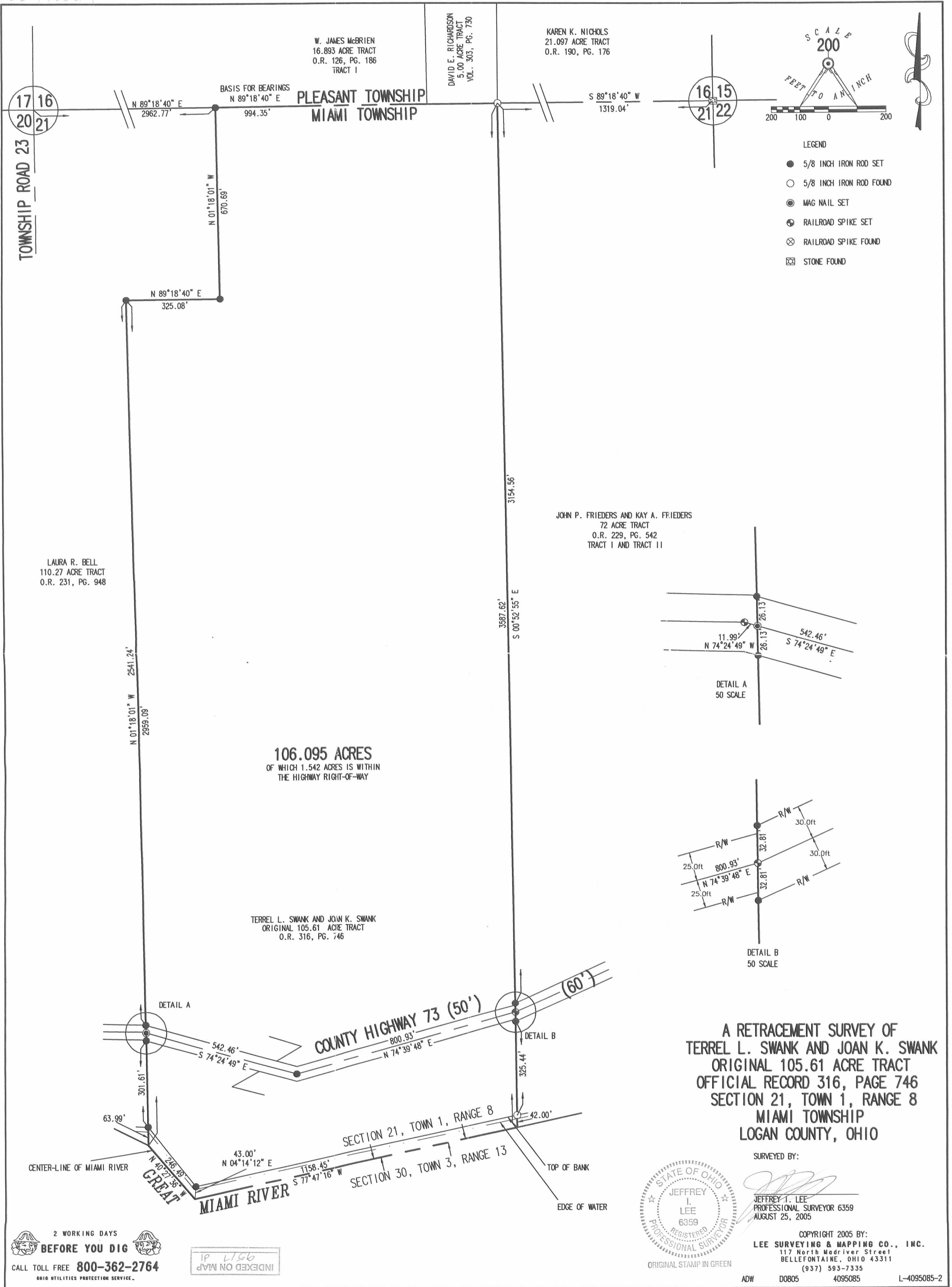
Jeffrey I. Lee
Jeffrey I. Lee
Professional Surveyor 6359
August 26, 2005

L-4095085

ORIGINAL STAMP IN GREEN



REV'D 9-1-05 SML OK



TOWNSHIP ROAD 23

17 16
20 21

16 15
21 22

LAURA R. BELL
110.27 ACRE TRACT
O.R. 231, PG. 948

106.095 ACRES
OF WHICH 1.542 ACRES IS WITHIN
THE HIGHWAY RIGHT-OF-WAY

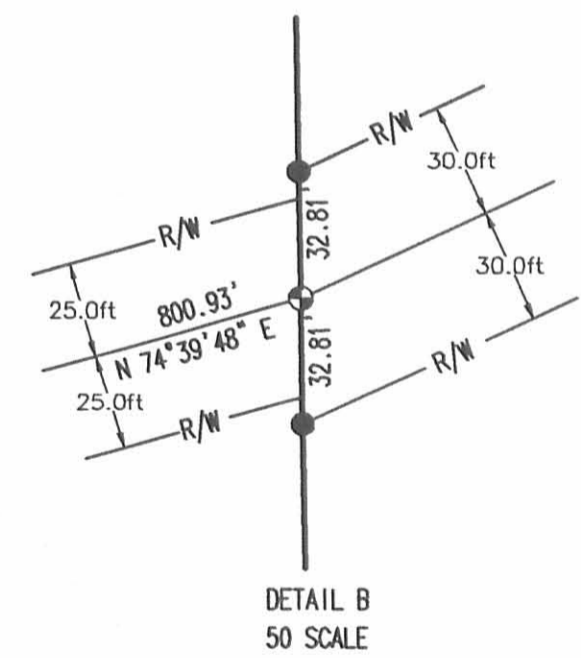
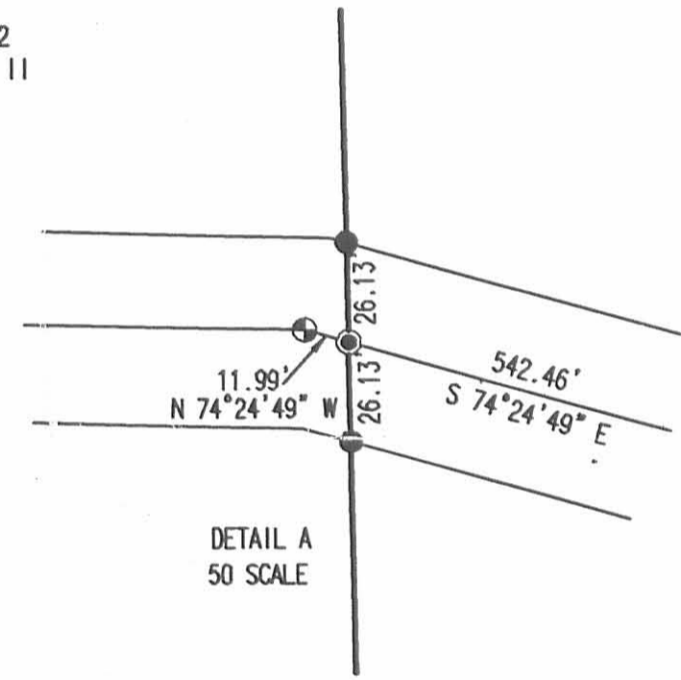
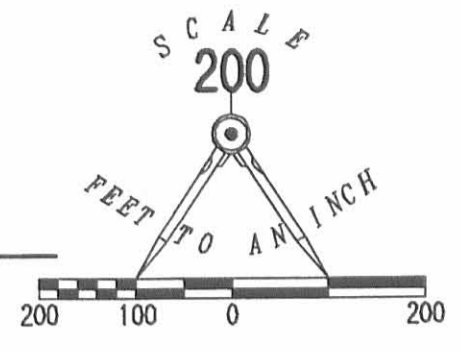
TERREL L. SWANK AND JOAN K. SWANK
ORIGINAL 105.61 ACRE TRACT
O.R. 316, PG. 746

W. JAMES McBRIEN
16.893 ACRE TRACT
O.R. 126, PG. 186
TRACT I

DAVID E. RICHARDSON
5.00 ACRE TRACT
VOL. 303, PG. 730

KAREN K. NICHOLS
21.097 ACRE TRACT
O.R. 190, PG. 176

JOHN P. FRIEDERS AND KAY A. FRIEDERS
72 ACRE TRACT
O.R. 229, PG. 542
TRACT I AND TRACT II



A RETRACEMENT SURVEY OF
TERREL L. SWANK AND JOAN K. SWANK
ORIGINAL 105.61 ACRE TRACT
OFFICIAL RECORD 316, PAGE 746
SECTION 21, TOWN 1, RANGE 8
MIAMI TOWNSHIP
LOGAN COUNTY, OHIO

SURVEYED BY:
Jeffrey T. Lee
JEFFREY T. LEE
PROFESSIONAL SURVEYOR 6359
AUGUST 25, 2005



COPYRIGHT 2005 BY:
LEE SURVEYING & MAPPING CO., INC.
117 North Madriver Street
BELLEFONTAINE, OHIO 43311
(937) 593-7335

2 WORKING DAYS
BEFORE YOU DIG
CALL TOLL FREE 800-362-2764
OHIO UTILITIES PROTECTION SERVICE.

IP L156
INDEXED ON MAP

ADW D0805 4095085 L-4095085-2

6-18-14

Lee Surveying and Mapping Co., Inc.

APPROVED Land Surveys • Topography • Subdivisions • Construction Layout

117 N. Madriver St.
Bellefontaine OH 43311



Phone: (937) 593-7335
Fax: (937) 593-7444
surveys@lsminc.us

BELL 13.233 ACRES

Lying in Section 21, Town 1, Range 8, Miami Township, Logan County, Ohio.

Being out of the David B. Bell and P. Joanne Bell 106.095 acre tract as deeded and described in Official Record 795, Page 718 of the Logan County Records of Deeds and being more particularly described as follows:

Commencing on a stone found on the northeast corner of Section 21.

THENCE, with the north line of Section 21, S 89°-18'-40"W, a distance of 1319.04 feet to a 5/8 inch iron rod found.

THENCE, with the west line of the John P. Frieders 72 acre tract (O.R. 229, Pg. 542, Tract I and Tract II), S 00°-52'-55"E, a distance of 3187.37 feet to a railroad spike found on the center-line of County Highway 73 at the TRUE POINT OF BEGINNING.

THENCE, with the west line of the said 72 acre tract, S 00°-52'-55"E, a distance of 400.25 feet to a point on the south line of Section 21 and the center-line of the Great Miami River, passing 5/8 inch iron rods found at 32.81 feet and 358.25 feet.

THENCE, with the south line of Section 21 and the center-line of the Great Miami River, the following two courses:

S 77°-47'-16"W, a distance of 1158.45 feet to a point, referenced by a 5/8 inch iron rod found bearing N 04°-14'-12"E, a distance of 43.00 feet.

N 40°-27'-36"W, a distance of 246.49 feet to a point.

THENCE, with the east line of the Holmes E. Bell 94.526 acre tract (O.R. 798, Pg. 702), N 01°-18'-03"W, a distance of 506.73 feet to a 5/8 inch iron rod set, passing 5/8 inch iron rods found at 63.99 feet and 365.60 feet, a MAG nail found on the center-line of County Highway 73 at 391.73 feet, and a 5/8 inch iron rod found at 417.86 feet.

THENCE, S 88°-11'-12"E, a distance of 335.00 feet to a 5/8 inch iron rod set.

Lee Surveying and Mapping Co., Inc.

Land Surveys • Topography • Subdivisions • Construction Layout

117 N. Madriver St.
Bellefontaine OH 43311



Phone: (937) 593-7335
Fax: (937) 593-7444
surveys@lsminc.us

THENCE, S 06°-53'-09"W, a distance of 192.00 feet to a MAG nail set on the center-line of County Highway 73, passing a 5/8 inch iron rod set at 166.71 feet.

THENCE, with the center-line of County Highway 73 (50 feet wide), the following two courses:

S 74°-24'-49"E, a distance of 221.46 feet to a 5/8 inch iron rod found.

N 74°-39'-48"E, a distance of 800.93 feet to the point of beginning.

Containing 13.233 acres, of which 0.956 acre is within the highway right-of-way.

Property is subject to any and all previous easements and rights-of-way of record.

The basis for bearings is the north line of Section 21, being S 89°-18'-40"W, and all other bearings are from angles and distances measured in a field survey by Lee Surveying and Mapping Co., Inc. on June 6, 2014.



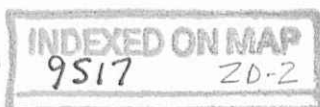
ORIGINAL STAMP IN GREEN

Description prepared by:

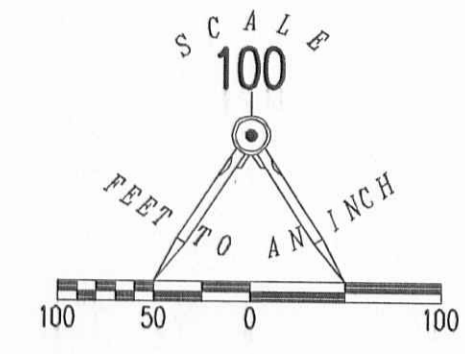
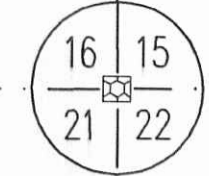
A handwritten signature in black ink that reads 'William K. Bruce'.

William K. Bruce
Professional Surveyor 7437
June 9, 2014

40950514



(BASIS FOR BEARINGS)
 S 89°18'40" W
 1319.04'



- LEGEND
- 5/8 INCH IRON ROD SET
 - 5/8 INCH IRON ROD FOUND
 - ⊙ MAG NAIL FOUND
 - ⊗ MAG NAIL SET
 - ⊗ RAILROAD SPIKE FOUND
 - ⊗ STONE FOUND

DAVID B. BELL AND
 P. JOANNE BELL
 106.095 ACRES
 O.R. 795, PG. 718

HOLMES E. BELL
 94.526 ACRES
 O.R. 798, PG. 702

JOHN P. FRIEDERS
 72 ACRES
 O.R. 229, PG. 542
 TRACT I AND TRACT II

13.233 ACRES
 OF WHICH 0.956 ACRE IS WITHIN
 THE HIGHWAY RIGHT-OF-WAY

**SURVEY OF 13.233 ACRES OUT OF THE
 DAVID B. BELL AND
 P. JOANNE BELL
 106.095 ACRE TRACT
 OFFICIAL RECORD 795, PAGE 718
 SECTION 21, TOWN 1, RANGE 8
 MIAMI TOWNSHIP
 LOGAN COUNTY, OHIO**

SURVEYED BY:

William K. Bruce
 WILLIAM K. BRUCE
 PROFESSIONAL SURVEYOR 7437
 JUNE 6, 2014



COPYRIGHT 2014 BY:
LEE SURVEYING & MAPPING CO., INC.
 117 North Madriver Street
 BELLEFONTAINE, OHIO 43311
 (937) 593-7335
 WWW.LSMINC.US
 surveys@lsminc.us
 KSS D0514 40950514 L-4095-2

2 WORKING DAYS
BEFORE YOU DIG
 CALL TOLL FREE **800-362-2764**
 OHIO UTILITIES PROTECTION SERVICE

INDEXED ON MAP
 9517 2P

