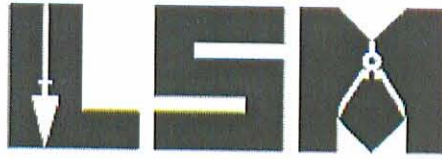


# Lee Surveying and Mapping Co., Inc.

Land Surveys • Topography • Subdivisions • Construction Layout

117 N. Madriver St.  
Bellefontaine OH 43311



Phone: (937) 593-7335  
Fax: (937) 593-7444  
surveys@lsminc.us

## McCULLY 10.972 ACRES

Lying in Section 4, Town 3, Range 13, Miami Township, Logan County, Ohio.

Being out of the Marvin W. McCully and Becky E. McCully 106 acre tract and 23 acre tract as deeded and described in Official Record 218, Page 482, Tract I and Tract II of the Logan County Records of Deeds and being more particularly described as follows:

Commencing on a 3/4 inch iron bolt found at Station 23+87.65 (Logan County Engineer's Field Book 685, Page 22) on the intersection of the center-lines of County Highway 65 and Township Road 295.

THENCE, with the center-line of Township Road 295 (40 feet wide), N 86°-47'-00"E, a distance of 521.55 feet to a MAG nail set at the TRUE POINT OF BEGINNING.

THENCE, N 03°-25'-06"E, a distance of 139.43 feet to a 5/8 inch iron rod set, passing a 5/8 inch iron rod set at 20.13 feet.

THENCE, N 21°-42'-55"E, a distance of 360.90 feet to a 5/8 inch iron rod set.

THENCE, N 86°-47'-00"E, a distance of 925.04 feet to a 5/8 inch iron rod set.

THENCE, S 03°-13'-00"E, a distance of 465.77 feet to a MAG nail set on the center-line of Township Road 295, passing a 5/8 inch iron rod set at 445.77 feet.

THENCE, with the center-line of Township Road 295, S 86°-47'-00"W, a distance of 1093.28 feet to the point of beginning.

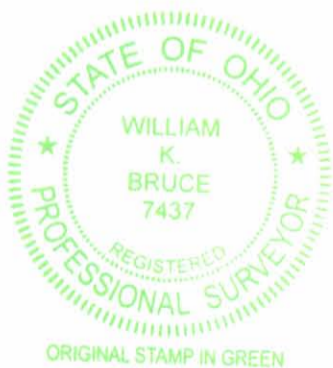
Containing 10.972 acres, of which 0.501 acre is within the highway right-of-way.

Property is subject to any and all previous easements and rights-of-way of record.

The basis for bearings is the center-line of Township Road 295, being N 86°-47'-00"E, and all other bearings are from angles and distances measured in a field survey by Lee Surveying and Mapping Co., Inc. on January 24, 2012.

Description prepared by:

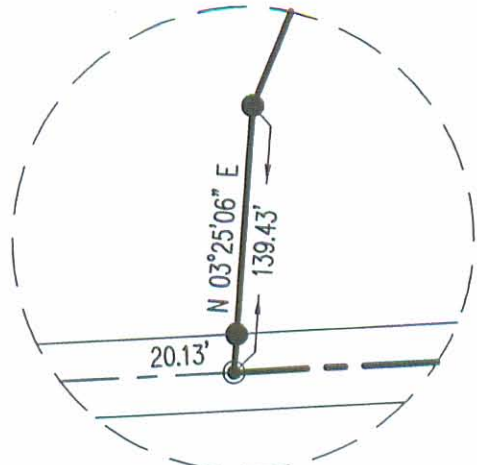
William K. Bruce  
Professional Surveyor 7437  
January 24, 2012



52640112

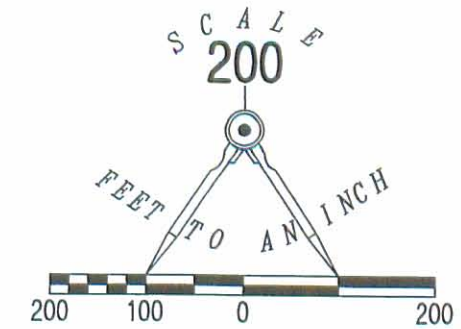


REC'D 1-27-12 SMYAK



**DETAIL**  
NOT TO SCALE

MARVIN W. McCULLY AND  
BECKY E. McCULLY  
106 ACRES  
O.R. 218, PG. 482  
TRACT I



LEGEND:

- ⊕ 3/4 INCH IRON BOLT FOUND
- ⊗ RAILROAD SPIKE FOUND
- MAG NAIL SET
- 5/8 INCH IRON ROD SET WITH PLASTIC I.D. CAP STAMPED "LSM 7437"

**SURVEY OF 10.972 ACRES OUT OF THE  
MARVIN W. McCULLY AND  
BECKY E. McCULLY  
106 ACRE TRACT AND 23 ACRE TRACT  
OFFICIAL RECORD 218, PAGE 482  
TRACT I AND TRACT II  
SECTION 4, TOWN 3, RANGE 13  
MIAMI TOWNSHIP  
LOGAN COUNTY, OHIO**

SURVEYED BY:

*William K. Bruce*

WILLIAM K. BRUCE  
PROFESSIONAL SURVEYOR 7437  
JANUARY 24, 2012



COPYRIGHT 2012 BY:  
**LEE SURVEYING & MAPPING CO., INC.**  
117 North Madriver Street  
BELLEFONTAINE, OHIO 43311  
(937) 593-7335  
WWW.LSMINC.US  
surveys@lsminc.us  
KSS D0112 52640112 L-5264-3

2 WORKING DAYS  
**BEFORE YOU DIG**  
CALL TOLL FREE **800-362-2764**  
OHIO UTILITIES PROTECTION SERVICE.

**INDEXED ON MAP**

9644 IP

COUNTY HIGHWAY 65 (60')

CENTER OF SECTION

MARVIN W. McCULLY AND  
BECKY E. McCULLY  
23 ACRES  
O.R. 218, PG. 482  
TRACT II

521.55'  
N 86°47'00" E  
(BASIS FOR BEARINGS)

STATION 23+87.65  
(LOGAN COUNTY ENGINEER'S  
FIELD BOOK 685, PAGE 22)

TOWNSHIP ROAD 295 (40')

**10.972 ACRES**  
OF WHICH 0.501 ACRE IS WITHIN  
THE HIGHWAY RIGHT-OF-WAY

SEE  
DETAIL

N 21°42'55" E  
360.90'

N 86°47'00" E  
925.04'

(3.338 ACRES)  
(7.634 ACRES)

S 03°13'00" E  
465.77'

20.00'  
S 86°47'00" W  
384.06'

1093.28'  
S 86°47'00" W

QUARTER SECTION LINE

QUARTER SECTION LINE