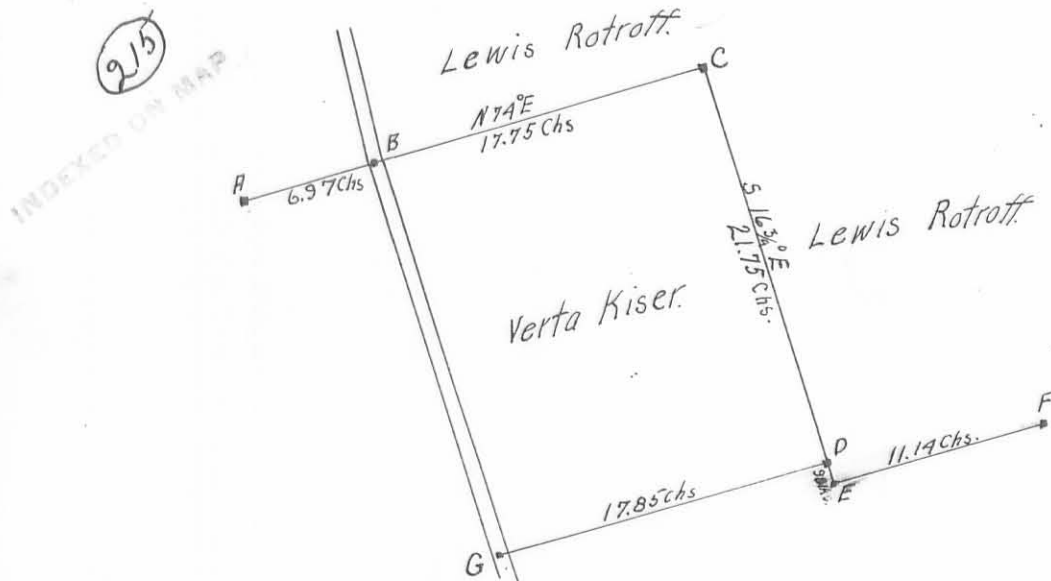


Surveyed for  
Verta Kiser & Lewis Rotrott.  
In Survey 4492, Monroe Township.

September 27<sup>th</sup> 1911.

by Walter V. Scott.  
Deputy County Surveyor.

C. W. Cash } Chainmen  
Frank Bailey }



Description of Corners.

- A, large Jack Oak tree.
- B, Iron bolt and old Stake in center of road.
- C, Set Limestone and bricks wit. Walnut 3' SW. 311ks
- D, Stone.
- E, Post.
- F, Post.
- G, Center of public road.

Corner C was planted in the presence of Peter Hulsizer, C. W. Cash, Frank Bailey, Marvin Kiser, Verta Kiser and Lewis Rotrott.

REC'D 8-30-01 Sky Ak

# Lee Surveying and Mapping Co., Inc.

Land Surveys • Topography • Subdivisions • Construction Layout

117 N. Madriver St.  
Bellefontaine OH 43311



Phone: (937) 593-7335  
Fax: (937) 593-7444

## MAURICE 1.000 ACRE TRACT A

Lying in Virginia Military Survey 4492, Monroe Township, Logan County, Ohio.

Being out of the Jeffrey L. Maurice 40.663 acre tract as deeded and described in Official Record 511, Page 563 of the Logan County Records of Deeds and being more particularly described as follows:

Beginning at a railroad spike found at the intersection of the center-lines of County Highway 171 and Township Road 166.

THENCE, with the center-line of Township Road 166 (40 feet wide) the following three (3) courses:

N 16°-00'-00" W, a distance of 1148.90 feet to a 1/2 inch iron pipe found.

N 86°-48'-02" W, a distance of 1240.87 feet to a 5/8 inch iron rod found.

N 14°-26'-16" W, a distance of 1102.46 feet to a MAG nail set at the TRUE POINT OF BEGINNING.

THENCE, S 73°-14'-07" W, a distance of 290.65 feet to a 5/8 inch iron rod set, passing a 5/8 inch iron rod set at 20.00 feet.

THENCE, N 14°-25'-59" W, a distance of 150.00 feet to a 5/8 inch iron rod set.

THENCE, with the south line of the Cyril C. Woodard, Trustee, 83.0 acre tract (O.R. 279, Pg. 390, Tract I), N 73°-14'-07" E, a distance of 290.64 feet to a boat spike found, passing a 5/8 inch iron rod found at 270.60 feet.

THENCE, with the center-line of Township Road 166, S 14°-26'-16" E, a distance of 150.00 feet to the point of beginning.

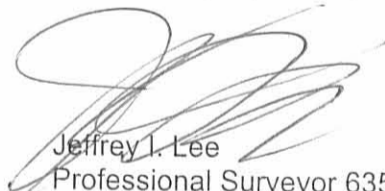
Containing 1.000 acre, of which 0.069 acre is within the highway right-of-way.

The basis for bearings is the center-line of Township Road 166 at the intersection with the center-line of County Highway 171, being N 16°-00'-00" W, and all other bearings are from angles and distances measured in a field survey by Lee Surveying and Mapping Co., Inc. on August 24, 2001.

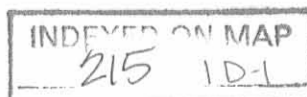
Description prepared by:



ORIGINAL STAMP IN GREEN

  
Jeffrey I. Lee  
Professional Surveyor 6359  
August 28, 2001

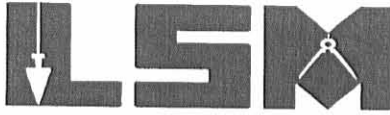
L-3222



# Lee Surveying and Mapping Co., Inc.

Land Surveys • Topography • Subdivisions • Construction Layout

117 N. Madriver St.  
Bellefontaine OH 43311



Phone: (937) 593-7335  
Fax: (937) 593-7444

## MAURICE 1.000 ACRE TRACT B

Lying in Virginia Military Survey 4492, Monroe Township, Logan County, Ohio.

Being out of the Jeffrey L. Maurice 40.663 acre tract as deeded and described in Official Record 511, Page 563 of the Logan County Records of Deeds and being more particularly described as follows:

Beginning at a railroad spike found at the intersection of the center-lines of County Highway 171 and Township Road 166.

THENCE, with the center-line of Township Road 166 (40 feet wide) the following three (3) courses:

N 16°-00'-00" W, a distance of 1148.90 feet to a 1/2 inch iron pipe found.

N 86°-48'-02" W, a distance of 1240.87 feet to a 5/8 inch iron rod found.

N 14°-26'-16" W, a distance of 1102.46 feet to a MAG nail set at the TRUE POINT OF BEGINNING.

THENCE, with the center-line of Township Road 166, N 14°-26'-16" W, a distance of 150.00 feet to a boat spike found.

THENCE, with the south line of the Cyril C. Woodard, Trustee, 83.0 acre tract (O.R. 279, Pg. 390, Tract I), N 75°-20'-54" E, a distance of 290.40 feet to a 5/8 inch iron rod set, passing a 5/8 inch iron rod found at 19.99 feet.

THENCE, S 14°-25'-59" E, a distance of 150.00 feet to a 5/8 inch iron rod set.

THENCE, S 75°-20'-54" W, a distance of 290.39 feet to the point of beginning, passing a 5/8 inch iron rod set at 270.39 feet.

Containing 1.000 acre, of which 0.069 acre is within the highway right-of-way.

The basis for bearings is the center-line of Township Road 166 at the intersection with the center-line of County Highway 171, being N 16°-00'-00" W, and all other bearings are from angles and distances measured in a field survey by Lee Surveying and Mapping Co., Inc. on August 24, 2001.

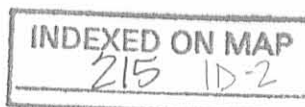
Description prepared by:



ORIGINAL STAMP IN GREEN

*Jeffrey I. Lee*  
Jeffrey I. Lee  
Professional Surveyor 6359  
August 28, 2001

L-3222



REC'D 8-30-01 *only*

# Lee Surveying and Mapping Co., Inc.

Land Surveys • Topography • Subdivisions • Construction Layout

117 N. Madriver St.  
Bellefontaine OH 43311



Phone: (937) 593-7335  
Fax: (937) 593-7444

## BOYER 1.127 ACRES

Lying in Virginia Military Survey 4492, Monroe Township, Logan County, Ohio.

Being out of the Micky G. Boyer and R. Darlene Boyer 40.663 acre tract as deeded and described in Official Record 511, Page 560 of the Logan County Records of Deeds and being more particularly described as follows:

Beginning at a railroad spike found at the intersection of the center-lines of County Highway 171 and Township Road 166.

THENCE, with the center-line of Township Road 166 (40 feet wide), N 16°-00'-00" W, a distance of 1148.90 feet to a 1/2 inch iron pipe found.

THENCE, continuing with the center-line of Township Road 166, N 86°-48'-02" W, a distance of 1097.20 feet to a MAG nail set at the TRUE POINT OF BEGINNING.

THENCE, with the center-line of Township Road 166, N 86°-48'-02" W, a distance of 143.67 feet to a 5/8 inch iron rod found.

THENCE, continuing with the center-line of Township Road 166, N 14°-26'-16" W, a distance of 319.45 feet to a MAG nail set.


THENCE, N 75°-33'-44" E, a distance of 150.00 feet to a 5/8 inch iron rod set, passing a 5/8 inch iron rod set at 20.00 feet.

THENCE, S 12°-22'-23" E, a distance of 363.22 feet to the point of beginning, passing a 5/8 inch iron rod set at 342.96 feet.

Containing 1.127 acres, of which 0.203 acre is within the highway right-of-way.

The basis for bearings is the center-line of Township Road 166 at the intersection with the center-line of County Highway 171, being N 16°-00'-00" W, and all other bearings are from angles and distances measured in a field survey by Lee Surveying and Mapping Co., Inc. on August 24, 2001.

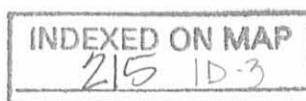
Description prepared by:

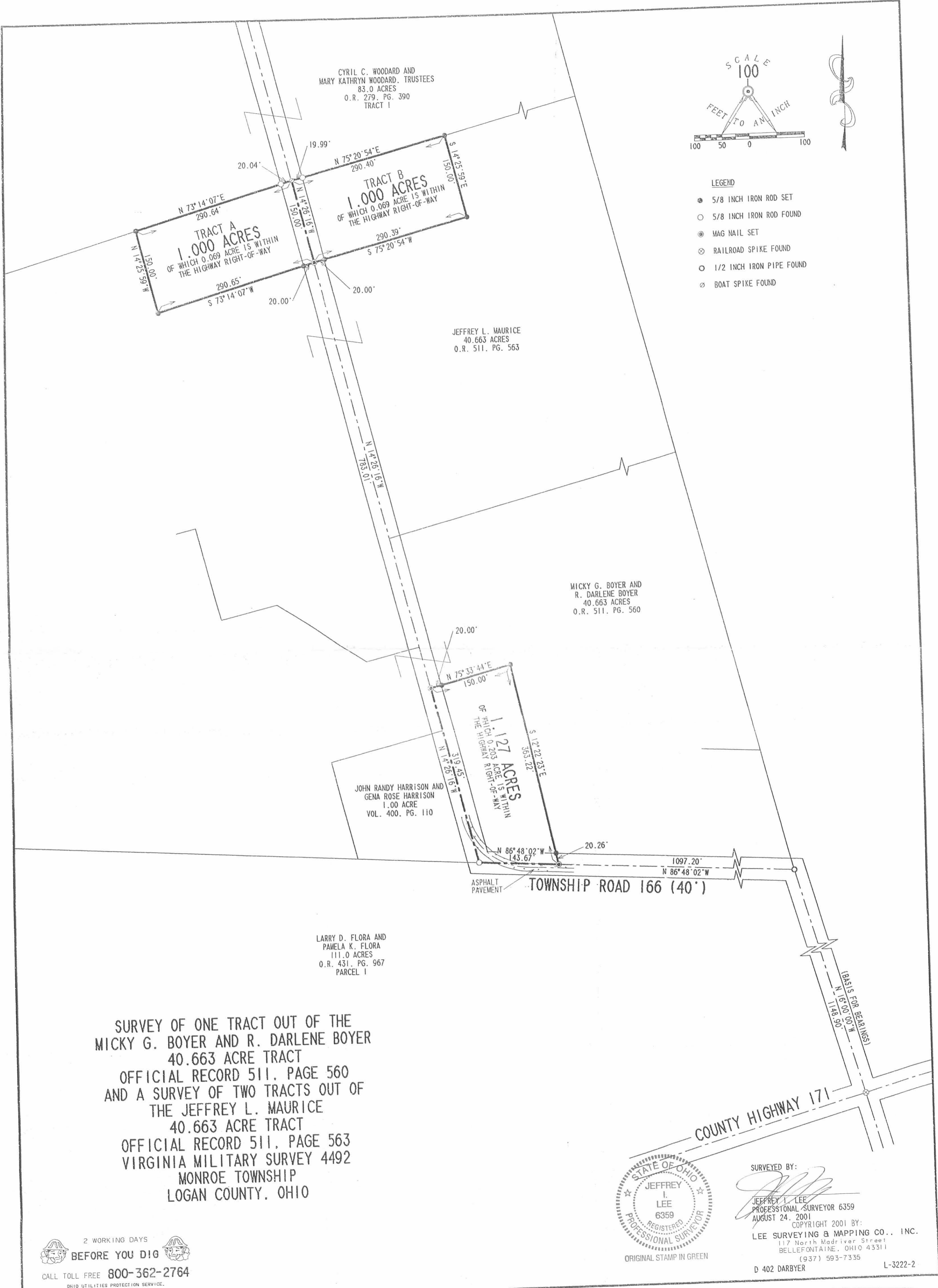
  
Jeffrey I. Lee  
Professional Surveyor 6359  
August 28, 2001



ORIGINAL STAMP IN GREEN

L-3222





SURVEYED BY:  
*Jeffrey I. Lee*  
 JEFFREY I. LEE  
 PROFESSIONAL SURVEYOR 6359  
 AUGUST 24, 2001  
 COPYRIGHT 2001 BY:  
 LEE SURVEYING & MAPPING CO., INC.  
 117 North Madriver Street  
 BELLEFONTAINE, OHIO 43311  
 (937) 593-7335  
 D 402 DARBYER L-3222-2

2 WORKING DAYS  
**BEFORE YOU DIG**  
 CALL TOLL FREE 800-362-2764  
 OHIO UTILITIES PROTECTION SERVICE.

INDEXED ON MAP  
 215



REC'D 9-6-01 SMM OK

# Lee Surveying and Mapping Co., Inc.

Land Surveys • Topography • Subdivisions • Construction Layout

117 N. Madriver St.  
Bellefontaine OH 43311



Phone: (937) 593-7335  
Fax: (937) 593-7444

## BOYER 19.185 ACRES

Lying in Virginia Military Survey 4492, Monroe Township, Logan County, Ohio.

Being out of the Micky G. Boyer and R. Darlene Boyer 40.663 acre tract as deeded and described in Official Record 511, Page 560 of the Logan County Records of Deeds and being more particularly described as follows:

Beginning at a railroad spike found at the intersection of the center-lines of County Highway 171 and Township Road 166.

THENCE, with the center-line of Township Road 166 (40 feet wide), N 16°-00'-00" W, a distance of 1148.90 feet to a 1/2 inch iron pipe found.

THENCE, continuing with the center-line of Township Road 166, N 86°-48'-02" W, a distance of 244.55 feet to a 5/8 inch iron rod found at the TRUE POINT OF BEGINNING.

THENCE, with the center-line of Township Road 166, N 86°-48'-02" W, a distance of 852.65 feet to a MAG nail set.

THENCE, N 12°-22'-23" W, a distance of 363.22 feet to a 5/8 inch iron rod set, passing a 5/8 inch iron rod set at 20.26 feet.

THENCE, S 75°-33'-44" W, a distance of 150.00 feet to a MAG nail set, passing a 5/8 inch iron rod set at 130.00 feet.

THENCE, with the center-line of Township Road 166, N 14°-26'-16" W, a distance of 276.55 feet to a MAG nail found.

THENCE, with the south line of the Jeffrey L. Maurice 40.663 acre tract (O.R. 511, Pg. 563), N 75°-20'-54" E, a distance of 1181.30 feet to a 5/8 inch iron rod found, passing a MAG nail found at 20.00 feet.

THENCE, with the west line of the Frank Giannola 31.985 acre tract (O.R. 404, Pg. 309), S 14°-30'-51" E, a distance of 757.14 feet to a point.

THENCE, with the north line of the R. Darlene Boyer and Micky G. Boyer 1.011 acre tract (O.R. 461, Pg. 3), N 86°-49'-29" W, a distance of 177.84 feet to a 5/8 inch iron rod found, passing a 5/8 inch iron rod found at 0.87 feet.

THENCE, with the west line of the said 1.011 acre tract, S 3°-12'-59" W, a distance of 208.59 feet to the point of beginning, passing a 5/8 inch iron rod found at 188.59 feet.


Containing 19.185 acres, of which 0.525 acre is within the highway right-of-way.

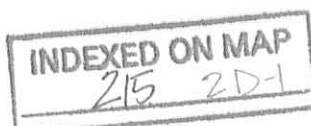
The basis for bearings is the center-line of Township Road 166 at the intersection with the center-line of County Highway 171, being N 16°-00'-00" W, and all other bearings are from a recorded survey by Blackburn Surveying, dated October 14, 1999 and angles and distances measured in a partial field survey by Lee Surveying and Mapping Co., Inc. on August 24, 2001.



ORIGINAL STAMP IN GREEN

Description prepared by:

  
Jeffrey I. Lee  
Professional Surveyor 6359  
August 28, 2001



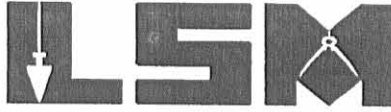
L-3222

REC'D 9-11-01 SMJ OK

# Lee Surveying and Mapping Co., Inc.

Land Surveys • Topography • Subdivisions • Construction Layout

117 N. Madriver St.  
Bellefontaine OH 43311



Phone: (937) 593-7335  
Fax: (937) 593-7444

## BOYER 1.127 ACRES

Lying in Virginia Military Survey 4492, Monroe Township, Logan County, Ohio.

Being out of the Micky G. Boyer and R. Darlene Boyer 40.663 acre tract as deeded and described in Official Record 511, Page 560 of the Logan County Records of Deeds and being more particularly described as follows:

Beginning at a railroad spike found at the intersection of the center-lines of County Highway 171 and Township Road 166.

THENCE, with the center-line of Township Road 166 (40 feet wide), N 16°-00'-00" W, a distance of 1148.90 feet to a 1/2 inch iron pipe found.

THENCE, continuing with the center-line of Township Road 166, N 86°-48'-02" W, a distance of 1097.20 feet to a MAG nail set at the TRUE POINT OF BEGINNING.

THENCE, with the center-line of Township Road 166, N 86°-48'-02" W, a distance of 143.67 feet to a 5/8 inch iron rod found.

THENCE, continuing with the center-line of Township Road 166, N 14°-26'-16" W, a distance of 319.45 feet to a MAG nail set.

THENCE, N 75°-33'-44" E, a distance of 150.00 feet to a 5/8 inch iron rod set, passing a 5/8 inch iron rod set at 20.00 feet.

THENCE, S 12°-22'-23" E, a distance of 363.22 feet to the point of beginning, passing a 5/8 inch iron rod set at 342.96 feet.

Containing 1.127 acres, of which 0.203 acre is within the highway right-of-way.

The basis for bearings is the center-line of Township Road 166 at the intersection with the center-line of County Highway 171, being N 16°-00'-00" W, and all other bearings are from angles and distances measured in a field survey by Lee Surveying and Mapping Co., Inc. on August 24, 2001.

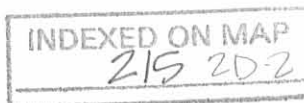
Description prepared by:

Jeffrey J. Lee  
Professional Surveyor 6359  
August 28, 2001

L-3222



ORIGINAL STAMP IN GREEN



REC'D 9-6-01 SUM OK

# Lee Surveying and Mapping Co., Inc.

Land Surveys • Topography • Subdivisions • Construction Layout

117 N. Madriver St.  
Bellefontaine OH 43311



Phone: (937) 593-7335  
Fax: (937) 593-7444

## MAURICE 1.000 ACRE TRACT A

Lying in Virginia Military Survey 4492, Monroe Township, Logan County, Ohio.

Being out of the Jeffrey L. Maurice 40.663 acre tract as deeded and described in Official Record 511, Page 563 of the Logan County Records of Deeds and being more particularly described as follows:

Beginning at a railroad spike found at the intersection of the center-lines of County Highway 171 and Township Road 166.

THENCE, with the center-line of Township Road 166 (40 feet wide) the following three (3) courses:

N 16°-00'-00" W, a distance of 1148.90 feet to a 1/2 inch iron pipe found.

N 86°-48'-02" W, a distance of 1240.87 feet to a 5/8 inch iron rod found.

N 14°-26'-16" W, a distance of 1102.46 feet to a MAG nail set at the TRUE POINT OF BEGINNING.

THENCE, S 73°-14'-07" W, a distance of 290.65 feet to a 5/8 inch iron rod set, passing a 5/8 inch iron rod set at 20.00 feet.

THENCE, N 14°-25'-59" W, a distance of 150.00 feet to a 5/8 inch iron rod set.

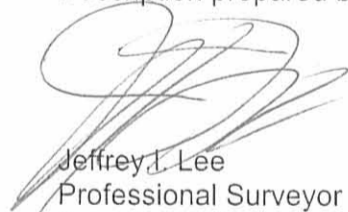
THENCE, with the south line of the Cyril C. Woodard, Trustee, 83.0 acre tract (O.R. 279, Pg. 390, Tract I), N 73°-14'-07" E, a distance of 290.64 feet to a boat spike found, passing a 5/8 inch iron rod found at 270.60 feet.

THENCE, with the center-line of Township Road 166, S 14°-26'-16" E, a distance of 150.00 feet to the point of beginning.

Containing 1.000 acre, of which 0.069 acre is within the highway right-of-way.

The basis for bearings is the center-line of Township Road 166 at the intersection with the center-line of County Highway 171, being N 16°-00'-00" W, and all other bearings are from angles and distances measured in a field survey by Lee Surveying and Mapping Co., Inc. on August 24, 2001.

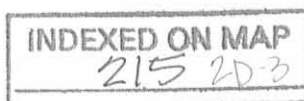
Description prepared by:

  
Jeffrey L. Lee  
Professional Surveyor 6359  
August 28, 2001



ORIGINAL STAMP IN GREEN

L-3222





REC'D 9-6-01 SJM/OK

# Lee Surveying and Mapping Co., Inc.

Land Surveys • Topography • Subdivisions • Construction Layout

117 N. Madriver St.  
Bellefontaine OH 43311



Phone: (937) 593-7335  
Fax: (937) 593-7444

## MAURICE 16.795 ACRES

Lying in Virginia Military Survey 4492, Monroe Township, Logan County, Ohio.

Being out of the Jeffrey L. Maurice 40.663 acre tract as deeded and described in Official Record 511, Page 563 of the Logan County Records of Deeds and being more particularly described as follows:

Beginning at a railroad spike found at the intersection of the center-lines of County Highway 171 and Township Road 166.

THENCE, with the center-line of Township Road 166 (40 feet wide) the following three (3) courses:

N 16°-00'-00" W, a distance of 1148.90 feet to a 1/2 inch iron pipe found.

N 86°-48'-02" W, a distance of 1240.87 feet to a 5/8 inch iron rod found.

N 14°-26'-16" W, a distance of 596.00 feet to a MAG nail found at the TRUE POINT OF BEGINNING.

THENCE, with the center-line of Township Road 166, N 14°-26'-16" W, a distance of 506.46 feet to a MAG nail set.

THENCE, N 75°-20'-54" E, a distance of 290.39 feet to a 5/8 inch iron rod set, passing a 5/8 inch iron rod set at 20.00 feet.

THENCE, N 14°-25'-59" W, a distance of 150.00 feet to a 5/8 inch iron rod set.

THENCE, with the south line of the Cyril C. Woodard, Trustee, 83.0 acre tract (O.R. 279, Pg. 390, Tract I), N 75°-20'-54" E, a distance of 889.97 feet to a stone found.

THENCE, with the west lines of the Allen W. Traucht original 43.0 acre tract (O.R. 5, Pg. 354) and the Frank Giannola 31.985 acre tract (O.R. 404, Pg. 309), S 14°-30'-51" E, a distance of 656.45 feet to a 5/8 inch iron rod found.

THENCE, with the north line of the Micky G. Boyer 40.663 acre tract (O.R. 511, Pg. 560), S 75°-20'-54" W, a distance of 1181.30 feet to the point of beginning, passing a MAG nail found at 1161.30 feet.

Containing 16.795 acres, of which 0.233 acre is within the highway right-of-way.

The basis for bearings is the center-line of Township Road 166 at the intersection with the center-line of County Highway 171, being N 16°-00'-00" W, and all other bearings are from a recorded survey by Blackburn Surveying, dated October 14, 1999 and angles and distances measured in a partial field survey by Lee Surveying and Mapping Co., Inc. on August 24, 2001.

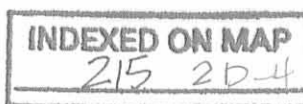
Description prepared by:



ORIGINAL STAMP IN GREEN

*Jeffrey I. Lee*  
Jeffrey I. Lee  
Professional Surveyor 6359  
August 28, 2001

L-3222



REC'D 9-6-01 SWM OK

# Lee Surveying and Mapping Co., Inc.

Land Surveys • Topography • Subdivisions • Construction Layout

117 N. Madriver St.  
Bellefontaine OH 43311



Phone: (937) 593-7335  
Fax: (937) 593-7444

## MAURICE 1.000 ACRE TRACT B

Lying in Virginia Military Survey 4492, Monroe Township, Logan County, Ohio.

Being out of the Jeffrey L. Maurice 40.663 acre tract as deeded and described in Official Record 511, Page 563 of the Logan County Records of Deeds and being more particularly described as follows:

Beginning at a railroad spike found at the intersection of the center-lines of County Highway 171 and Township Road 166.

THENCE, with the center-line of Township Road 166 (40 feet wide) the following three (3) courses:

N 16°-00'-00" W, a distance of 1148.90 feet to a 1/2 inch iron pipe found.

N 86°-48'-02" W, a distance of 1240.87 feet to a 5/8 inch iron rod found.

N 14°-26'-16" W, a distance of 1102.46 feet to a MAG nail set at the TRUE POINT OF BEGINNING.

THENCE, with the center-line of Township Road 166, N 14°-26'-16" W, a distance of 150.00 feet to a boat spike found.

THENCE, with the south line of the Cyril C. Woodard, Trustee, 83.0 acre tract (O.R. 279, Pg. 390, Tract I), N 75°-20'-54" E, a distance of 290.40 feet to a 5/8 inch iron rod set, passing a 5/8 inch iron rod found at 19.99 feet.

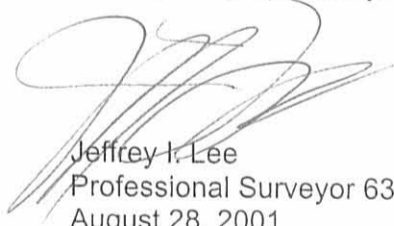
THENCE, S 14°-25'-59" E, a distance of 150.00 feet to a 5/8 inch iron rod set.

THENCE, S 75°-20'-54" W, a distance of 290.39 feet to the point of beginning, passing a 5/8 inch iron rod set at 270.39 feet.

Containing 1.000 acre, of which 0.069 acre is within the highway right-of-way.

The basis for bearings is the center-line of Township Road 166 at the intersection with the center-line of County Highway 171, being N 16°-00'-00" W, and all other bearings are from angles and distances measured in a field survey by Lee Surveying and Mapping Co., Inc. on August 24, 2001.

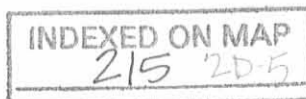
Description prepared by:

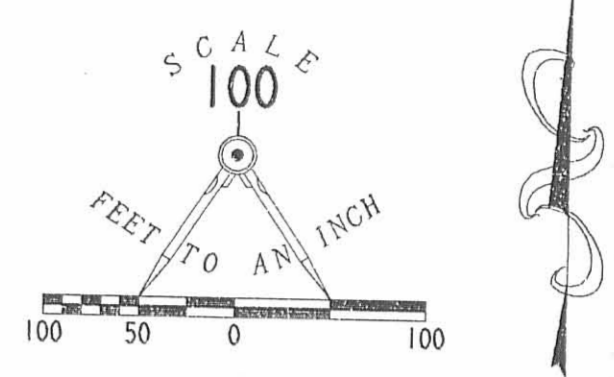
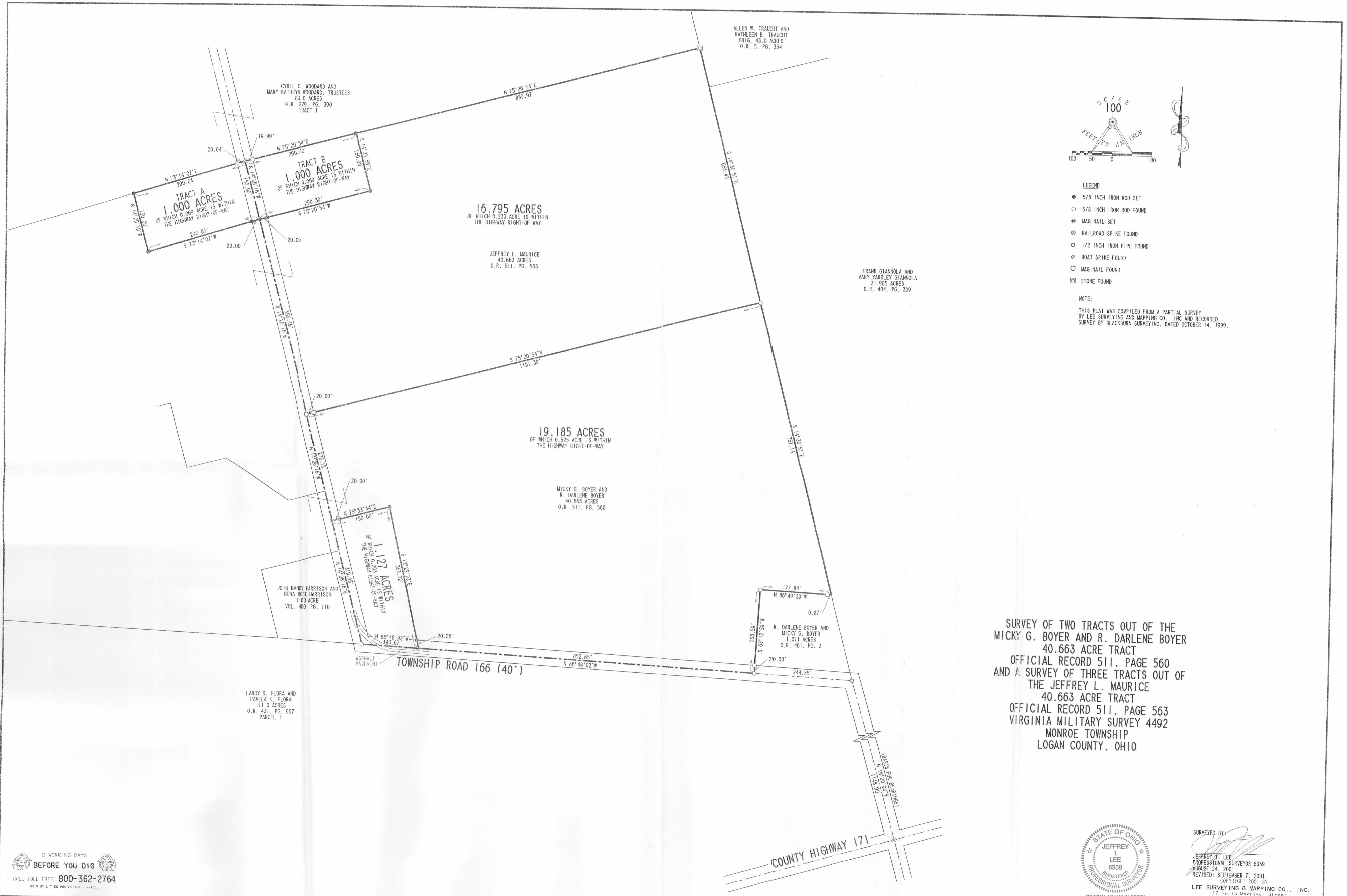
  
Jeffrey I. Lee  
Professional Surveyor 6359  
August 28, 2001



ORIGINAL STAMP IN GREEN

L-3222





- LEGEND**
- 5/8 INCH IRON ROD SET
  - 5/8 INCH IRON ROD FOUND
  - ⊙ MAG NAIL SET
  - ⊗ RAILROAD SPIKE FOUND
  - 1/2 INCH IRON PIPE FOUND
  - ⊙ BOAT SPIKE FOUND
  - MAG NAIL FOUND
  - ⊗ STONE FOUND

**NOTE:**  
 THIS PLAT WAS COMPILED FROM A PARTIAL SURVEY  
 BY LEE SURVEYING AND MAPPING CO., INC AND RECORDED  
 SURVEY BY BLACKBURN SURVEYING, DATED OCTOBER 14, 1999.

**SURVEY OF TWO TRACTS OUT OF THE  
 MICKY G. BOYER AND R. DARLENE BOYER  
 40.663 ACRE TRACT  
 OFFICIAL RECORD 511, PAGE 560  
 AND A SURVEY OF THREE TRACTS OUT OF  
 THE JEFFREY L. MAURICE  
 40.663 ACRE TRACT  
 OFFICIAL RECORD 511, PAGE 563  
 VIRGINIA MILITARY SURVEY 4492  
 MONROE TOWNSHIP  
 LOGAN COUNTY, OHIO**



SURVEYED BY:  
 JEFFREY L. LEE  
 PROFESSIONAL SURVEYOR 6359  
 AUGUST 24, 2001  
 REVISED: SEPTEMBER 7, 2001  
 COPYRIGHT 2001 BY:  
 LEE SURVEYING & MAPPING CO., INC.  
 117 North Madriver Street  
 BELLEFONTAINE, OHIO 43311  
 (937) 593-7335  
 D 402 DARBYSER L-3222-2

2 WORKING DAYS  
**BEFORE YOU DIG**  
 CALL TOLL FREE 800-362-2764  
 OHIO UTILITIES PROTECTION SERVICE.

INDEXED ON MAP  
 215 2P



HARRISON SURVEY

The following described real estate situated in the Township of Monroe, County of Logan, State of Ohio and being a part of Virginia Military Survey No. 4492 and being out of a 82.55 Acre tract in the name of Rodney and Maxine Harrison as recorded in Deed Volume No. 205 Page 538 (11-16-1951) and being more particularly described as follows:

Beginning at an iron pipe found at Station No. 11+50.40 of the centerline survey of T. R. No. 166 as recorded in Logan County Engineer's Field Book No. 689 Page 30 and being the southeast corner to Harrison's tract and the northeast corner to Dorothy E. Flora's present 113.00 Acre tract and in the west line of Donald W. Ropp's present 47.878 Acre tract;

Thence with the centerline of T. R. No. 166 (Note: This line is the Basis of Bearing for this survey), N. 87°24' W. 245.00 feet to a 5/8" x 30" Rebar set;

Thence N. 2°36' E. 208.72 feet to a 5/8" x 30" Rebar set, passing through a 5/8" x 30" Rebar set at 20.00 feet;

Thence S. 87°24' E. 177.50 Feet to a 5/8" x 30" Rebar set in the east line of Harrison's tract and the west line of Ropp's tract;

Thence with the line between Harrison and Ropp, S. 15°19'16" E. 219.36 feet to the place of beginning, passing through a R. R. Spike set at 198.18 feet, containing 44,092.10 square feet or 1.011 Acres, more or less.

Of the above described tract, there is 4,835.30 Square feet or 0.111 Acres in the right of way of T. R. No. 166.

I hereby certify that this description is based on a field survey done by me on February 5, 1990.



*Daniel E. Gilbert*

DANIEL E. GILBERT, P.S.  
Reg. Sur. No. 5402  
400 N. Park St.  
Bellefontaine, Ohio  
43311

INDEXED ON MAP  
2153D

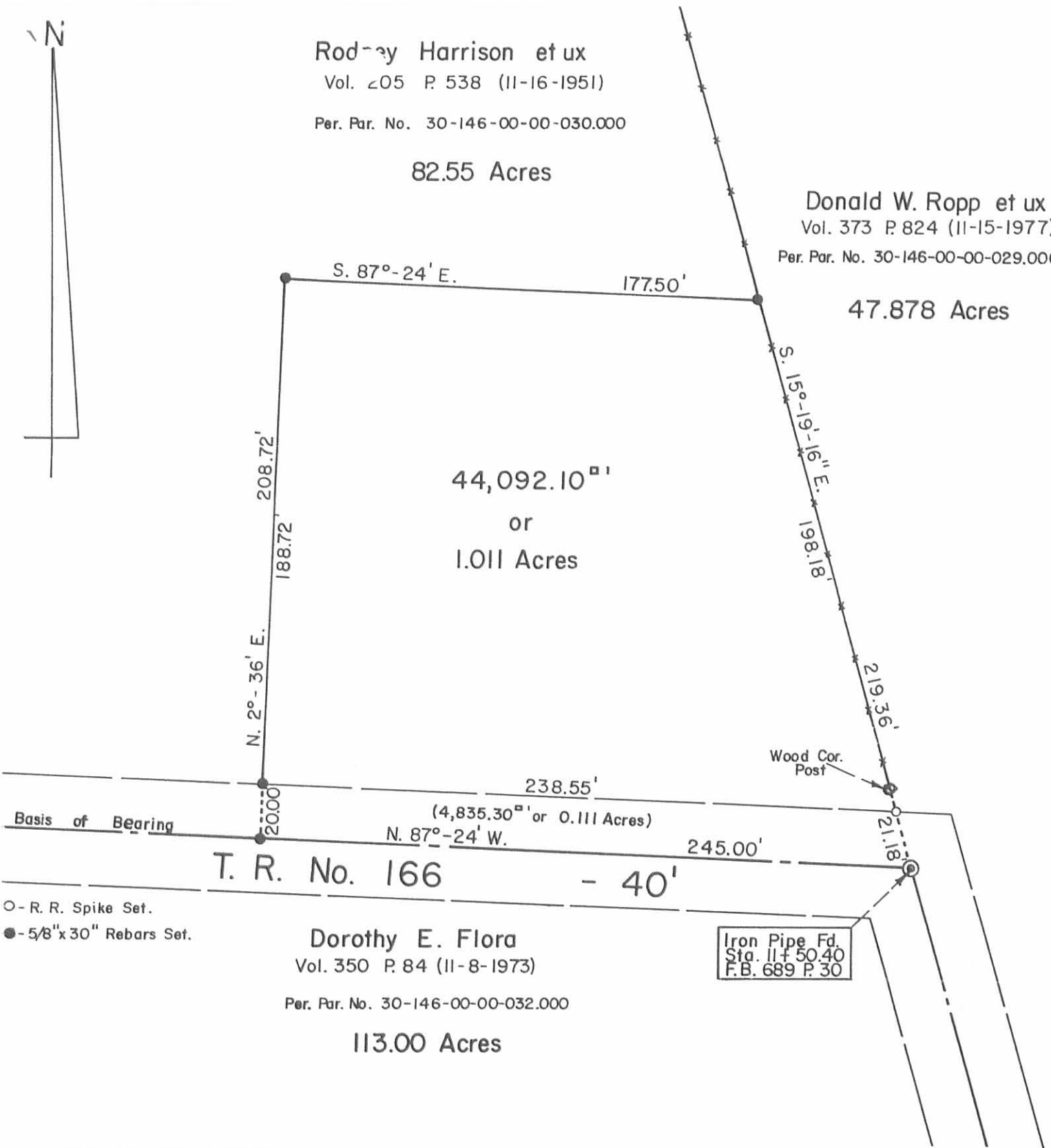
Rodney Harrison et ux  
 Vol. 205 P. 538 (11-16-1951)  
 Per. Par. No. 30-146-00-00-030.000

82.55 Acres

Donald W. Ropp et ux  
 Vol. 373 P. 824 (11-15-1977)  
 Per. Par. No. 30-146-00-00-029.000

47.878 Acres

44,092.10<sup>sq</sup> ft  
 or  
 1.011 Acres



○ - R. R. Spike Set.  
 ● - 5/8" x 30" Rebars Set.

T. R. No. 166 - 40'

Dorothy E. Flora  
 Vol. 350 P. 84 (11-8-1973)  
 Per. Par. No. 30-146-00-00-032.000

113.00 Acres

Iron Pipe Fd.  
 Sta. 11+50.40  
 F.B. 689 P. 30

INDEXED ON MAP  
 215 3P

*Daniel E. Gilbert*  
 Daniel E. Gilbert, P.S.  
 Reg. Sur. No. 5402  
 400 N. Park St.  
 Bellefontaine, Ohio  
 43311



HARRISON SURVEY  
 V. M. S. No. 4492  
 MONROE TOWNSHIP  
 LOGAN COUNTY, OHIO  
 FEBRUARY 5,  
 1990  
 Scale: 1" = 50'