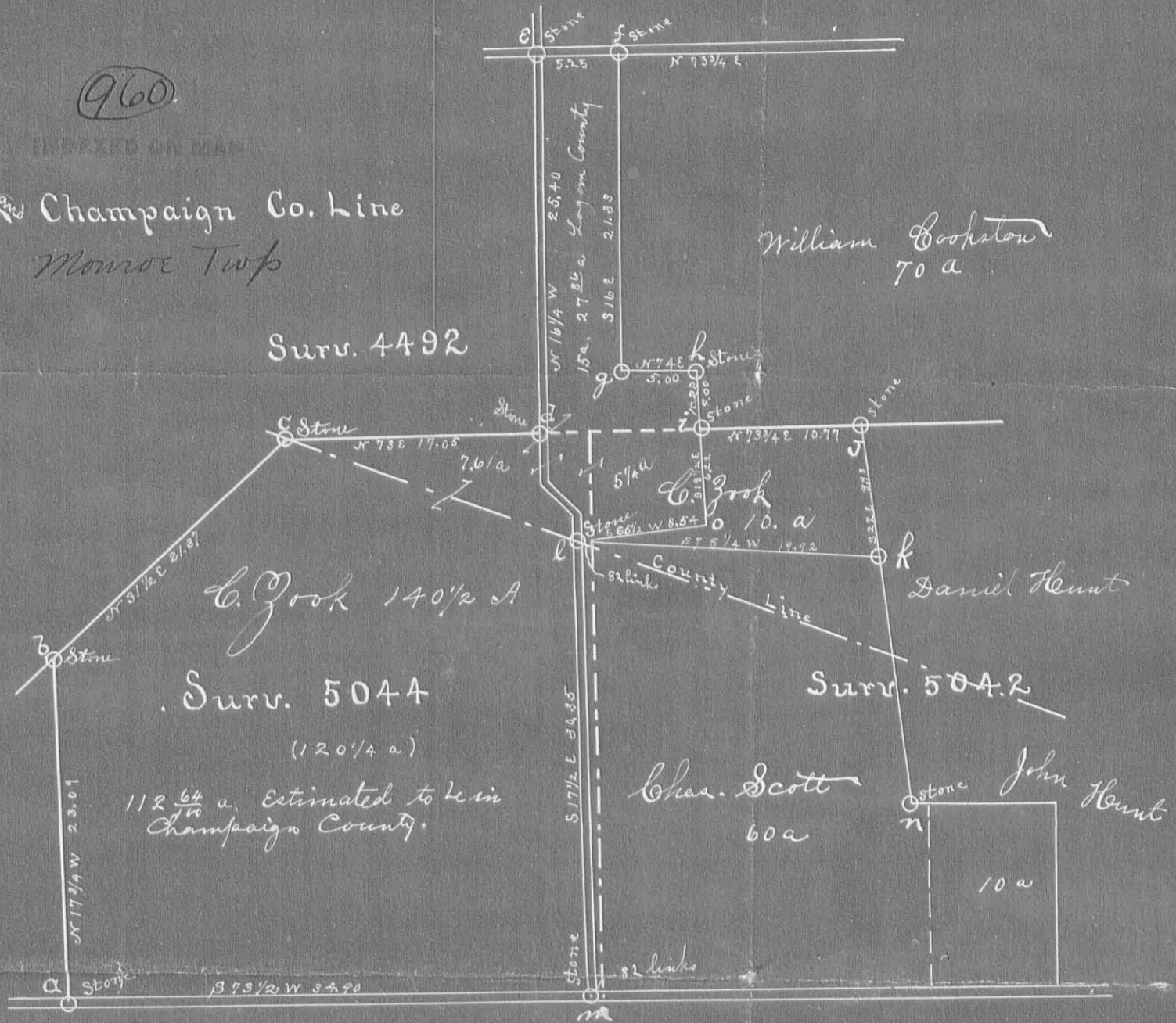


960

INDEXED ON MAP

Logan & Champaign Co. Line
Monroe Twp



Corners

Field Notes

- a. Stone in center public road. Southwest corner Surr. 5044.
- b. " corner to Surr. 5044
- c. " " " " Burr O. 36" S 33 W 49 links
- d. " in Surr. line at west side road. Black Walnut 10" S 34 1/4 E 61 3/4 links.
- e. " in cent x road. W. Oak 30" S 9 3/4 E 75 link 2/3 Red Oak 14" S 48 1/4 W 75 lks.
- f. " cent road, north west corner Wm Cookston. W. Oak 30" S 6 E 17 1/2 links.
- g. stake, Black Walnut 24" N 1 E 67 1/3 links 2/3 Black Walnut 24" N 70 1/2 W 89 links
- i. stone, in S line Surr 4492 2/3 N. line Surr 5042. Red Oak 30" S 54 1/4 E 71 link also White Oak 30" N 71 3/4 E 120 links.
- h. Stone.
- o. post near Sassafras tree 16"
- l. Stone center pub. road.
- m. Stone " " " and 82 links west of South east corner to Surr. 5044.
- j. Stone at Shel Hickory 20" in Survey line.
- k. stake in west line Danl. Hunt land. Walnut Black 6" S 12 1/2 E 11 links
- n. Stone corner Daniel Hunt and Chas Scott.