

Piatt Survey.

The following described land in Section 21, Town 5, Range 13, of between the Miami River Survey and being in Monroe Township, Logan County, Ohio.

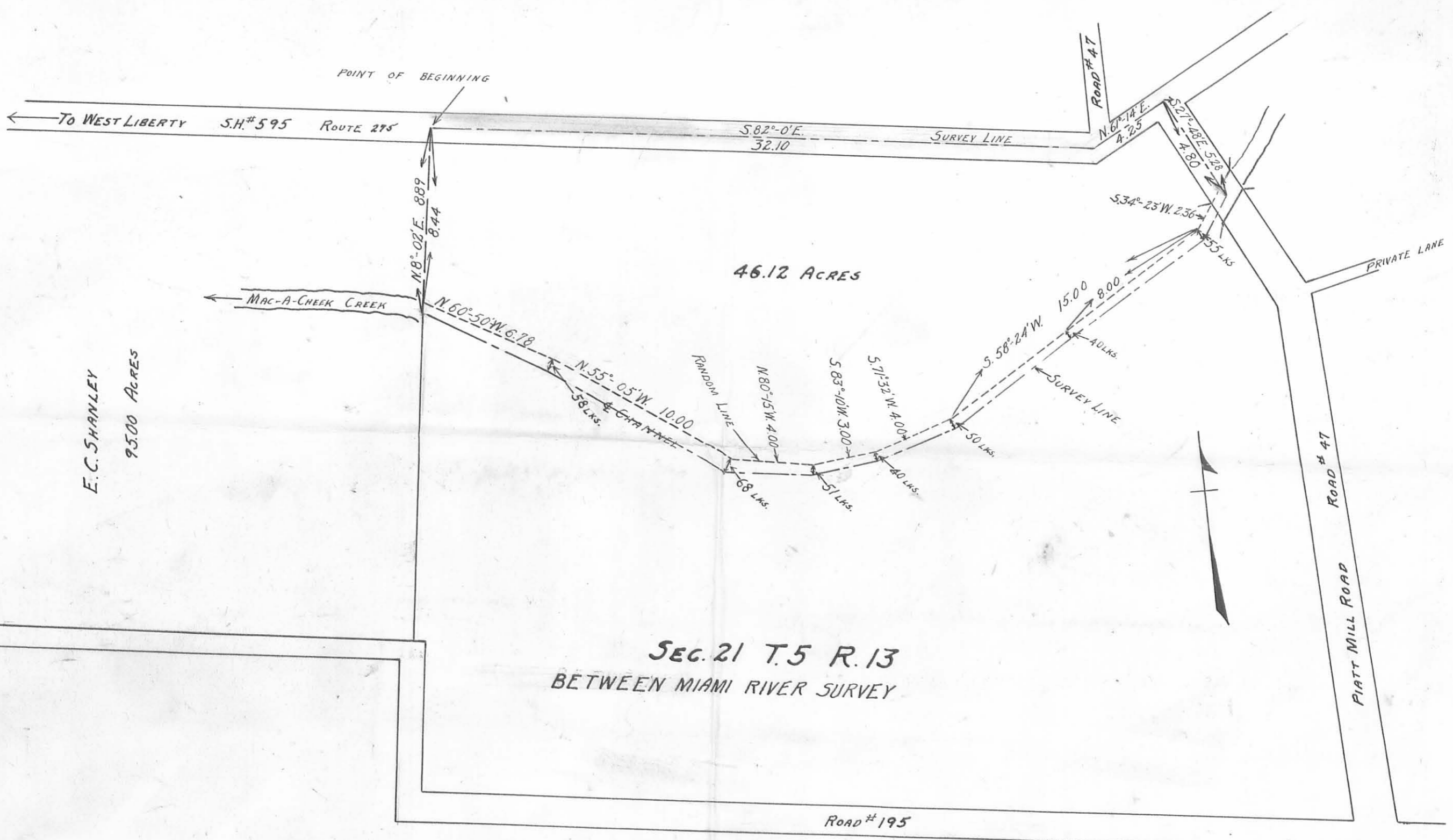
Beginning at a point in the center of Road No. S.H. 595²⁷⁵ State Route 275 (formerly known as the Mac_a_cheek pike) said point being the N.E. corner of a 95 acre tract of land now owned by E.C. Shanley; thence (1) with the center of said road No. S.H. 595 S.82° 0'E. 32.10 chains; thence (2) N.61° 14'E. 4.25 chains to a point in the center of the so called Piatt Mill Road (Tp. Road No. 47); thence (3) with the center of said Road No. 47 S.27° 48'E. 5.28 chains to a point in the center of Mac_a_cheek Creek; thence (4) Westerly on the center line of Mac_a_cheek creek channel to a point in the East line of Shanley's 95 acre tract, said center line being set forth as distances South of a random line running along N. bank of said creek and described as follows; said random line beginning at a point in the center line of Road No. 47 S.27° 48'E. 4.80 chains from the end of above described course (2); thence (a) S.34° 23'W. 2.36 chains to a point, said point being 55 links N. of center line of creek; thence (b) S.58° 24'W. 8.00 chains to a point; said point being 40 links N. of center line of creek; thence continuing along the same course (b) 7.00 chains to a point, said point being 50 links N. of center line of creek; thence (c) S.71° 32'W. 4.00 chains to a point; said point being 40 links N. of center line of creek; thence (d) S.83° 10'W. 3.00 chains to a point; said point being 51 links N. of center line of creek, thence (d)

966
1D-1

N.80° 15' W. 4.00 chains to a point; said point being 68 links N. of center line of creek; thence (e) N.55° 05' W. 10.00 chains to a point, said point being 58 links N. of center line of creek; thence (f) N.60° 50' W. 6.78 chains to a point which is the end of above mentioned random line, said point being N.8° 02' E. 45 links from center line of creek; thence beginning in the center line of creek at the end of course (4) and running on Shanley's E. line (5) N.8° 02' E. 8.89 chains to the beginning containing 46.12 acres more or less.

This survey is shown and recorded in Logan County Surveyor's Field Book #403, Page 21.

966
10-2
①



E.C. SHANLEY
95.00 ACRES

46.12 ACRES

SEC. 21 T. 5 R. 13
BETWEEN MIAMI RIVER SURVEY

NAME *N.A. Montgomery*
SURVEYOR
CERTIFICATE APPLIED FOR
DATE *June 26, 1934*

NOTE:
SURVEY NOTES IN SURVEYOR'S
FIELD BOOK # 403 PAGE 21
ALL DISTANCES IN CHAINS.

E.K. CORE JAN. 25, 1934

966 IP
Indexed on Map

PIATT SURVEY
MONROE TOWNSHIP
LOGAN COUNTY, OHIO

March 1926

Piatt Survey.

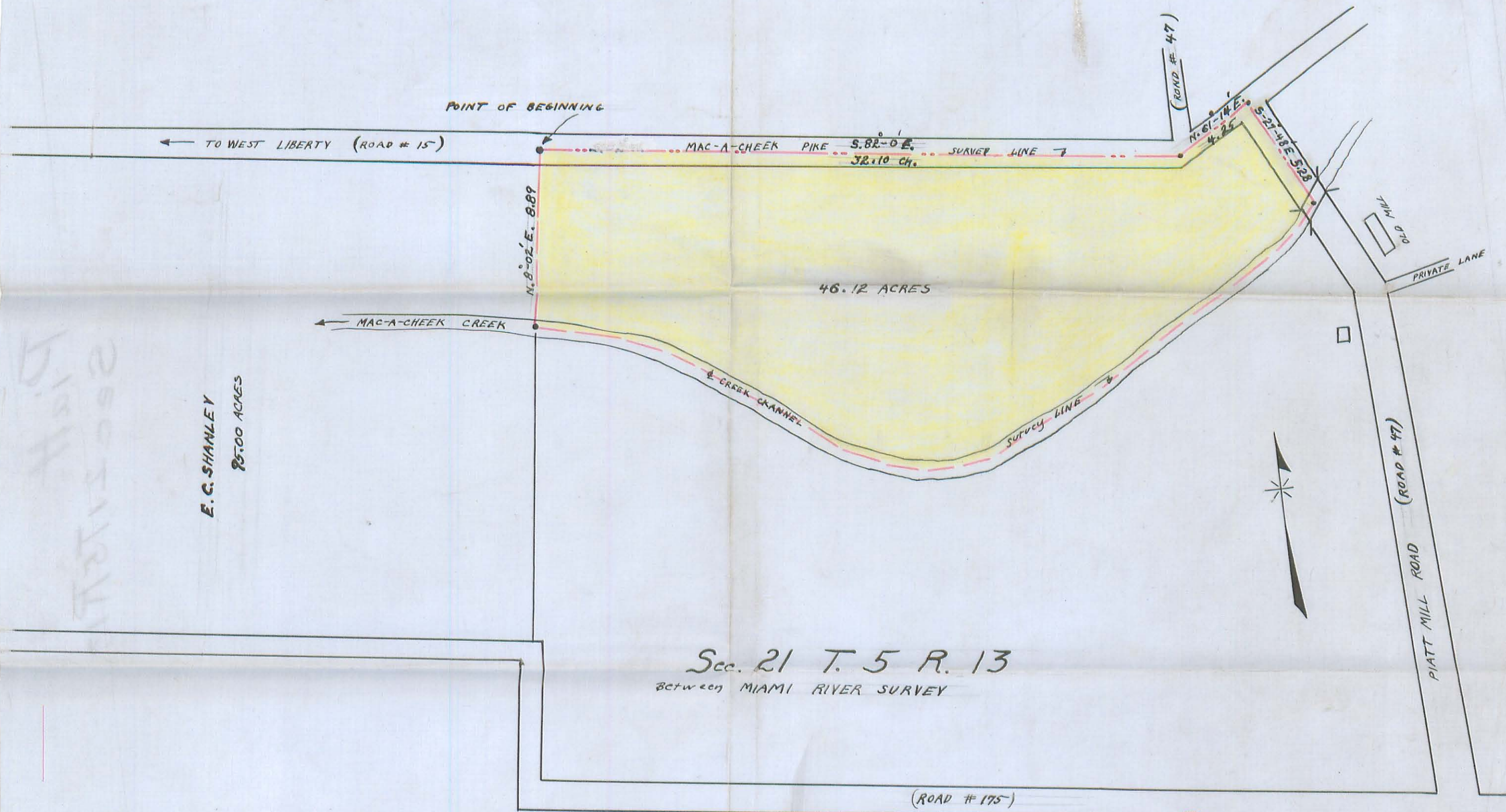
32

The following described land in Sec. 21, T. 5, R. 13, Miami River Survey, and being in Monroe Township, Logan County, Ohio.

Beginning at a point in the center of the Mac-A-Cheek Pike (known as Road #15), said point being the N.E. corner of a 95 acre tract of land now owned by E.C. Shanley; thence with the center of said Mac-A-Cheek Pike S. 82 - 0 E. 32.10 chains, and N. 61-14 E. 4.25 chains to a point in the center of the Piatt Mill Road, so called (known as Road #47); thence with the center of said Piatt Mill Road S. 27-48 E. 5.28 chains to a point in the center of Mac-A-Cheek creek, thence in a Westerly direction following the center of Mac-A-Cheek Creek channel to a point in the East line of Shanley's 95 acre tract; thence with said Shanley's East line N. 8 - 02 E. 8.89 chains to place of beginning, containing forty-six and twelve hundredths (46.12) acres more or less as surveyed March 4, 1926 by F.F. Wright.

Book 403 Page 21

966
20



POINT OF BEGINNING

← TO WEST LIBERTY (ROAD # 15)

MAC-A-CHEEK PIKE S. 82° 0' E. SURVEY LINE 7
32.10 CH.

(ROAD # 47)

N. 61° 14' E.
4.25

S. 21° 48' E. 528

N. 8° 02' E. 8.89

46.12 ACRES

← MAC-A-CHEEK CREEK

← CREEK CHANNEL

SURVEY LINE 8

PRIVATE LANE

(ROAD # 47)

PIATT MILL ROAD

E. C. SHANLEY

85.00 ACRES

Sec. 21 T. 5 R. 13
Between MIAMI RIVER SURVEY

(ROAD # 175)



NOTE:-

THIS SURVEY MADE MARCH-4-1926.
SURVEY NOTES IN SURVEYORS
FIELD BOOK # 403 PAGE 24
ALL DISTANCES IN CHAINS
G. F. Wright
Civil Eng.

466 2R

INDEXED ON MAP

PIATT SURVEY
MONROE TOWNSHIP
LOGAN COUNTY