

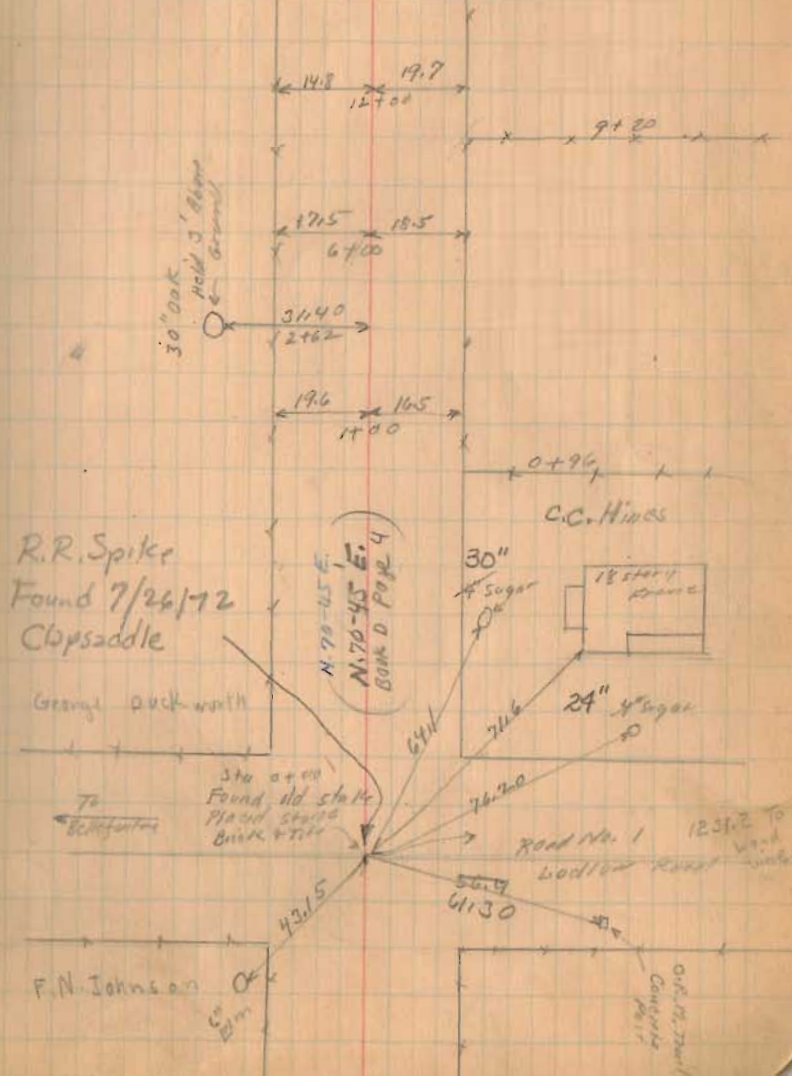
Road 47  
Monroe Twp.

Placed stakes 25' from E for 50' Road

60' Road 1 To 166 Vol. 6 - 240  
Vol. 6 - 294  
Dec. 7-1841

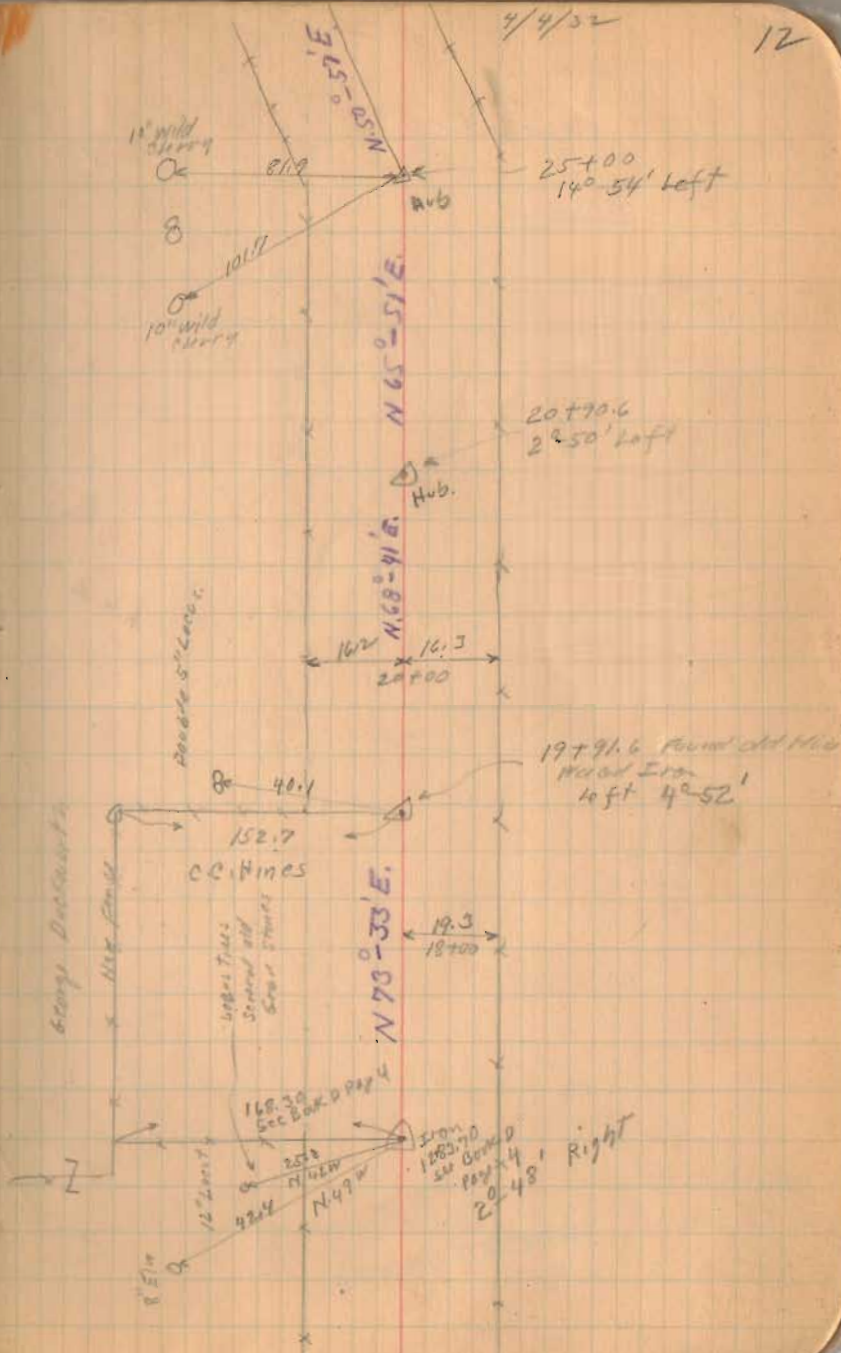
INDEXED ON MAP  
(136)

April-9-1932  
Cool  
Wright  
McKinnon  
Doff



Road 47

1361  
INDEXED ON MAP



Road 47

3801  
2801  
1000

INDEXED ON MAP  
1361

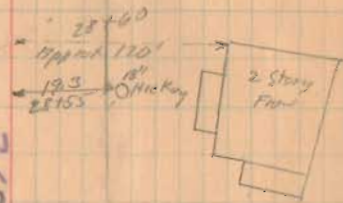
From 5-152  
Wormer  
Wright  
M = Kishan  
Duff

13

Went  
22718  
3° 0m 2  
33.9  
22711

1515  
1517  
30700

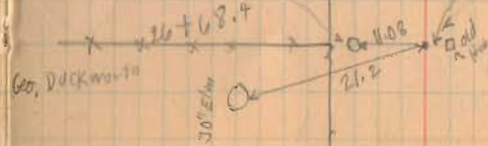
29+17  
01114



N. 50°-57' E

stone on  
V.M.S. Survey L.  
Set. This stone deeper 4/5/52  
A. D. Duff

J.I. Stuart

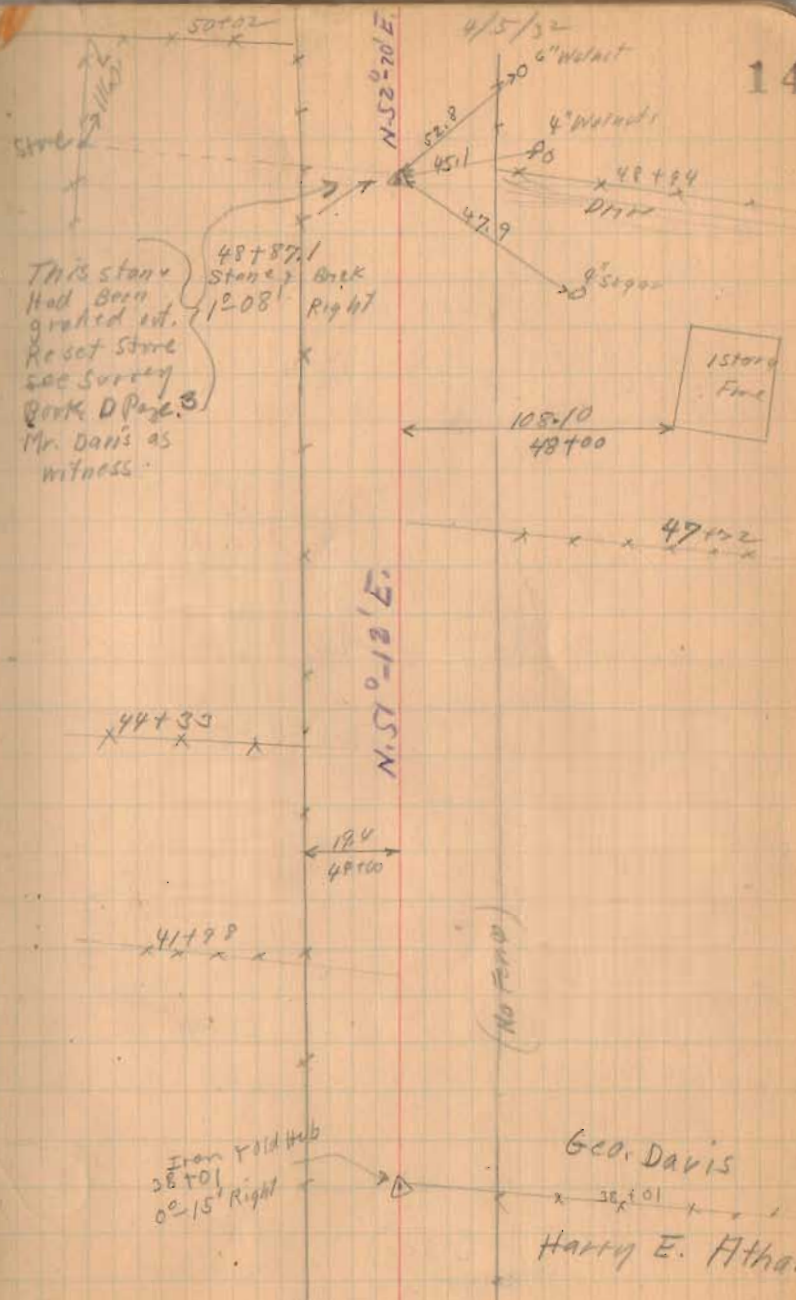


Geo. Duckworth

22+09  
Do  
26+68.4  
No Angle  
Harra E. Atha  
26+68 (Nufine)  
Rosa. Watkins

Road 47

14



This stone  
Had Been  
grahnd out.  
Re set Stone  
see Survey  
Book. D Page. 3  
Mr. Davis as  
witness.

48+87.1  
Stone }  
12-08 }  
Berk  
Right

(No Find)

Iron Fold Hub  
38+01  
02-15' Right

Geo. Davis  
38+01  
Harry E. Htha.

1361

INDEXED ON MAP

Road No. 47

Note: See FB 689 pg 40  
for new witnesses on  
CH # 47 & CH # 166

1361  
INDEXED ON MAP

15

