

SMUCKER SURVEY
MORRIS TOWNSHIP

FB 549

V.M.S. 6487, 2220, #4492

1533

JAN. 1, 1934

E.K. CORE

SMUCKER

" HAND
RAIN.

49

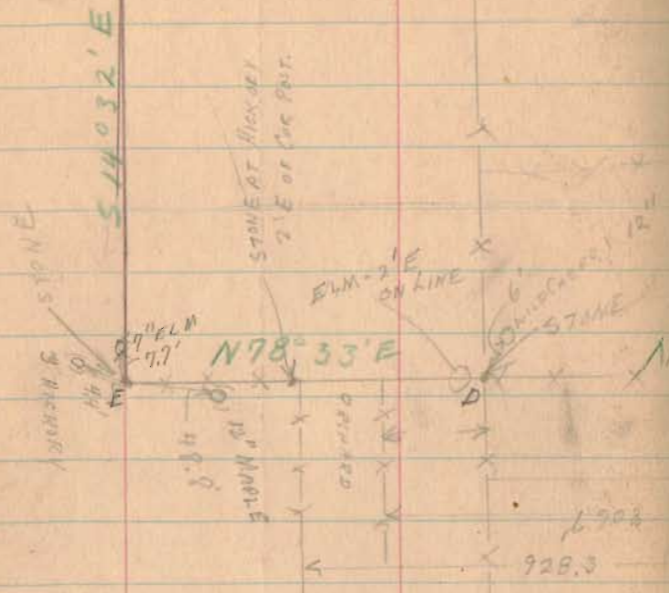
INDEXED ON MAP

LINE	DISTANCE	OBSERVED BEARINGS	CALL. BEARINGS	OBSERVED EXTERNAL ANGLE	RANDOM LINE DISTANCE OFF AT	CALCULATED EXTERNAL ANGLE
A	563.0'	N 62 1/2° E.	N 64° 13' E			
B	1308.6'	S. 15 1/2° E.	S 13° 05' E	102° 32' R	B-C 8.6' LEFT OF	102° ⁴² / ₅₅ R.
C	664.8'	N. 74 1/2° E	N 78° 05' E	88° 42' L	C. LEFT	88° ³⁰ / ₄₂ L.
D	959.6'	N. 75° E	N 78° 33' E		DE - 11.45' LEFT OF	²⁸ / ₄₄ R
E	1639.2'	S 18° E	S 14° 32' E	91° 18' R	E	86° ⁵⁵ / ₀₅ R
F	1377.3'	S 74° W	S 77° 50' W	92° 30' R	EF - 119.4' RIGHT OF F	87° ⁰⁵ / ₂₇ R
G	868.4'	N 14 1/2° W	N. 12° 09' W	90° 15' R.		92° ⁰¹ / ₁₅ R
H	725.7'	S 73° W	S. 75° 01' W.	92° 40' L		90° ⁵⁰ / ₁₅ R
I	1834.5'	N 13 1/2° W	N 12° 44' W	92° 14' R.	I-J 7.2' LEFT OF	92° ⁷⁵ / ₂₈ R
J	167.2'	S 65° W	S 64° 48' W	102° 24' L		92° ²⁸ / ₂₄ L
K	168.6'	N 14 1/2° W	N 12° 27' W	102° 47' R		102° ⁴⁵ / ₄₉ R
A			N 64° 13' E	76° 43' R.		102° ⁴⁶ / ₄₃ R

FB 549

F

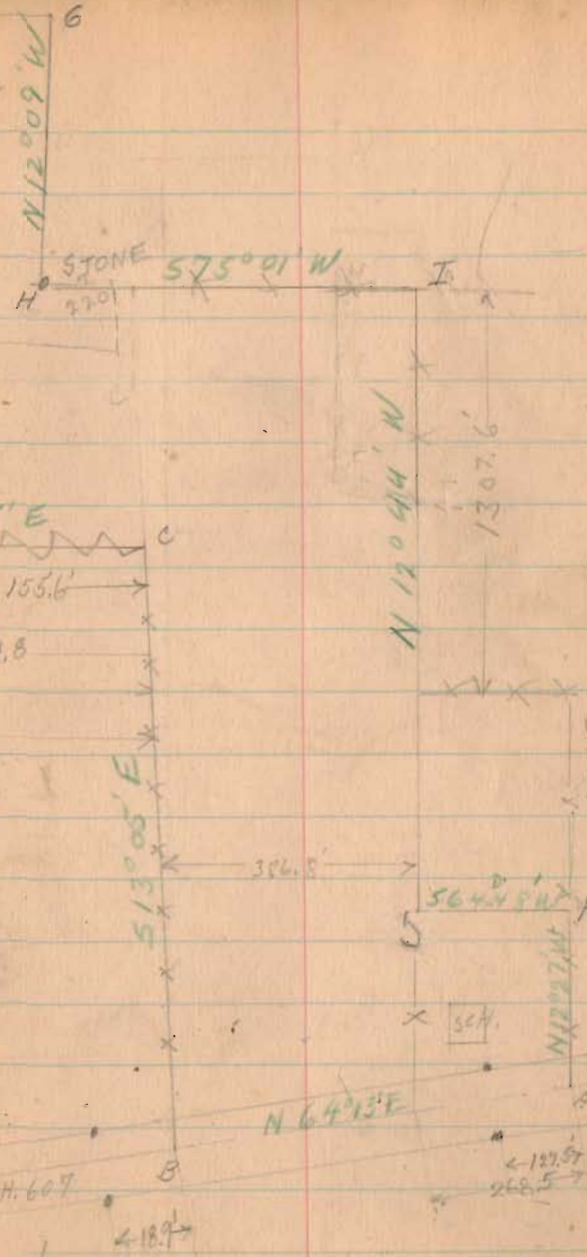
577°50' W



1533

INDEXED ON MAP

50



Smucker Survey.

The following described land situated in V.M.S. 6487, 2220 and 4492, Monroe Township, Logan County, Ohio.

Beginning at a point 18.48 feet East of the West line of V.M.S. 6487, and in the center of State Highway #607 (Route #287) formerly known as the Mac_a_cheek Pike), 127.5 feet West of two right_of_way monuments, said monuments being at Station 97+00 of Highway plans as shown in Logan County Surveyor's office plan L_25 Page 2; thence with the centerline of said State Highway #607 N.64° 13' E. 563.0' to a point 18.9 feet West of two right_of_way monuments at station 101+35.9 on said plan L_25 Page 2; thence S.13° 05' E. with the East line of Arthur B. Davis land 1308.6 feet to a post in the South line of V.M.S. #2220 and the North line of V.M.S. #4492; thence with said Davis South line and the survey line, N.78° 05' E. 664.8 feet to a stone in the line between Arthur B. Davis and Henry Trabert; thence with said Trabert's South line and the survey line, N.78° 33' E. 959.6 feet to a stone in the N.E. corner of V.M.S. #4492 and the S.E. corner of V.M.S. #2220; thence with the East line of V.M.S. #4492 S.14° 32' E. 1659.2 feet to a post in David Hartzler's N.E. corner; thence with Hartzler's North line S.77° 50' W. 1377.3 feet to a post in said Hartzler's N.W. corner, and Rebecca L. Yoder's East line; thence with said Yoder's East line N.12° 09' W. 868.4 feet to a stone in said Yoder's N.E. corner; thence with Yoder's North line S.75° 01' W. 725.7 feet to a post in Francis M. Wade's S.E. corner; thence with Wade's E. line N.12° 44' W. 1839.5 feet to a post in the East line of Mattie Neets and the South line of a former school lot; thence

1533 ID-1
INDEXED ON MAP

8

with the S. line of said lot S.64° 48' W. 167.2 feet to a post 18.48' East of the West line of V.M.S. #6487; thence parallel with the West line of V.M.S. #6487 N.12° 27' W. 168.6 feet to the place of beginning containing 75.45 acres.

4.92 acres being in V.M.S. #6487

4.85 acres being in V.M.S. #2220

65.66 acres being in V.M.S. #4492

This is the same tract as surveyed January 6, 1934 as shown and recorded in Logan County Surveyor's Book #549, Pages 49-52.

1533 ID-2
INDEXED ON MAP

FB C.M. RICHEY 1

Boyles Survey
of
Entire Randle Land
Survey 6487, 2220
4492

1533

Broyles Survey

Commenced at S.E. of
Emily Randal land also
corner Jones.

Stone of 40" W. Only 2' S.
Chained N. N. 15° W.
11.49 ch. to stone
Mary Randal, Henry Tolbert
Emily Randal and Jones.
18" Ch. 18" East

LINE B:

Offset 6'-8" S. 3/4 W.
Random 57 3/4 W.
Came out 15'-3" S of stone
10.04 ch.

O.K. Cre. 57 1/2 W

LINE C

Ch. N. Offset 6' W.
Random N. 15 3/4 W

Came out 37' W. of fence

19.78 ch

O.K. Cre. N 14 1/2 W

Morris Twp. 2/28, 1912

LINE D

W. with O. fake

4.46 ch.
S. 63 3/4 W

LINE E

with E. line school lot

S. 11 E
2.53

LINE F

S. 63° W
1.42

FB C.M. RICHEY 1

1533

LINE G.
Ch. South with fence

5.148

Passed north S. line at 8.05
Passed stone in fence
line at 15.05

27.82 - line Hart's line
corner post

LINE H
along south line
N. 73 1/4 E
16.13

Ch. W. along north S. line
corner S. 31.1 - 2.76
Ch. S. in line of fence closed
on Black corner

turned angle of 56°
5.14 1/2 E. Block corner N.
Ang 56°
5.76 1/2 E.

5.29 ch. to line B. at point
18.47 ch. from line B. at

Ch. from line C
to stone at 15.05 of
line G
6.00 ch.

Survey corner is 12 1/2 rods
from line C

FB C.M. RICHEY 1

1533