

Smucker survey  
 V.M.S. 4492  
 Monroe Twp.

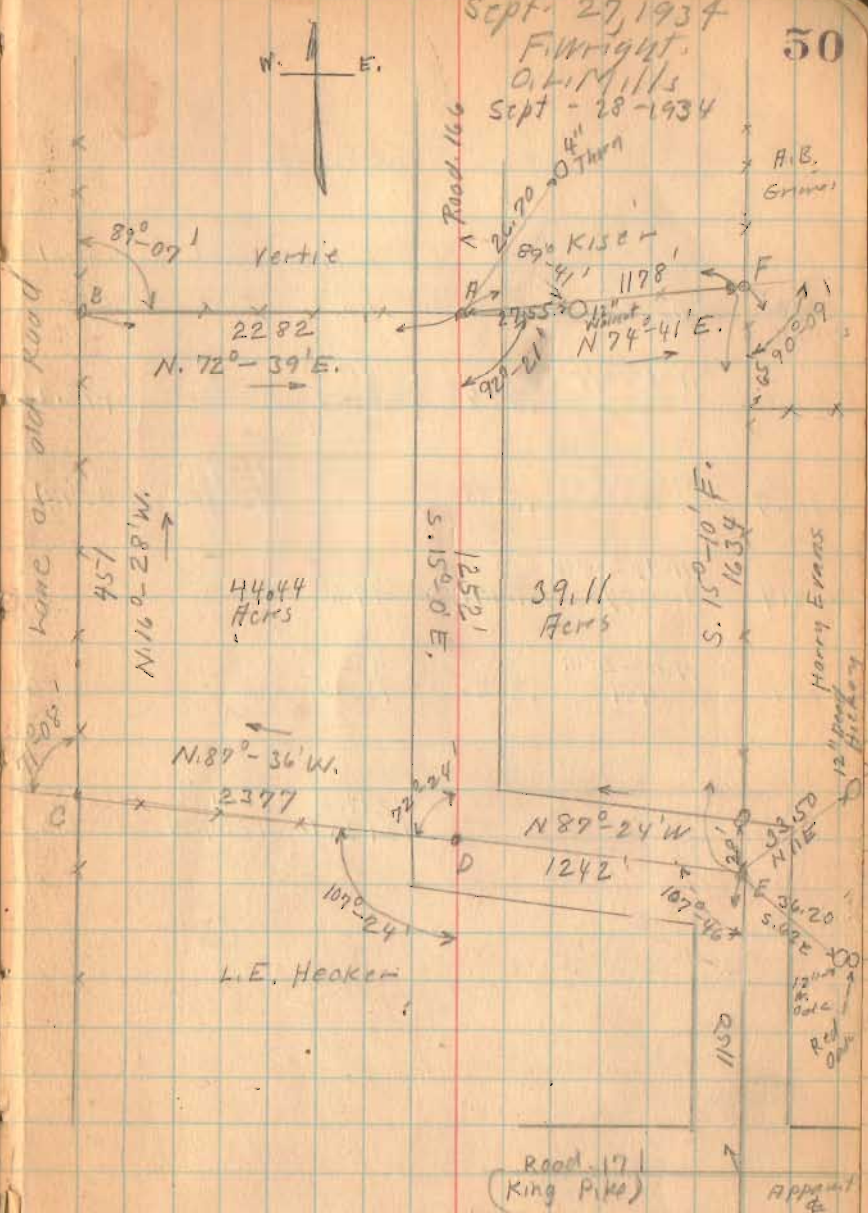
- A - stake
- B - stone N. side of post
- C - post
- D - stone found. (NOTE: THIS STONE REPLACED BY 5/2" x 30" ROSS (3-2-95) D.C. GILGOUR)
- E - 1/2" Iron 30" long
- F - Stone West side of post.

44.44  
 39.11  
 ---  
 83.55

163

INDEXED ON MAP

Sept. 27, 1934  
 Fairright,  
 O.H. Mills  
 Sept. 28 - 1934



(over)

Smucker Survey

Cosine	Bearing Dist.	Sine	Lat. (Cosine)		Dept. E+ S.-
			N+	S.-	
.2982	N. 72°-39'E 2282	.9545	680.0 680.5		2178.2
.9659	S. 15°-0'E 1252	.2588		1211.0 1209.3	324.3 824.0
.0419	N. 89°-36'W 2377	.9991	99.0 99.6		
.9590	N. 16°-28'W 451	.2835	432.0 432.5		

1211.0 1211.0 2502.5  
 1212.6 1209.3 2502.2  
 (3.3)

9-27-34

(West of Road)

(Sine)	D.M.D.	Area (P.M.D)	(Lat.)
W-		N+	S.-
	2178.2	1,481,176	
	4680.7		5,668,328
23749	2630.1	260,380	
127.6 127.8	127.6	55,120	
2502.5	1,796	1,796,679	5,668,328
2502.9			1,796,679
⑤			2 3,871,649
	43560		1,935,824
			44,4404
			44.44 Acres
			West of Road 166

1613



Smucker Survey

(East of Road)

Casin	Bearing Dist	Sine	Lat. (Casin)		Dist EF	Sine	D.M.D.	Area (D.M.D.) (Lat)	
			N +	S -				N +	S -
.2642	N. 74-41 E. 1128	.9645	311.2		1136.6 1136.2		1136.6	353,710	
.9652	1634 S. 15-10 E.	.12616		1577.0 1577.1	427.7 429.5		2700.9		4,259,319
.0454	N. 1242 N. 87-24 W	.9990	56.4			1240.5 1240.8	1888.3	106,500	
.9659	1252 N. 15-0 W.	.2588	1209.4 1209.3			324.0	324.0	391,846	
			1577.0	1577.0	1564.3	1564.3			
			1576.9	1577.1	1563.7	1564.8		852,056	4,259,319
									852,056
									2 3,407,263
								43560	1,703,631
									39,1029
									39.11

(1613)

INDEXED ON MAP

1934

20, 21

Smucker Survey ( 83.55 acres )

The following described land in V.M.S. 4492 Monroe Township, Logan County Ohio.

Beginning at the center of Road No. 171 (King Pike) where it crosses the center of Road No. 166; thence with the center of Road No. 166 N.15° W, 1150 feet to an iron, said iron being the beginning point of this survey; thence with the center of Road No. 166 N.87° 24' W. 1242 feet to a stone at an angle in said road; thence with L.E. Hecker's North line N.87° 36' W. 2377 feet to a post at said Hecker's N.W. corner and in C.A. Hartzler's East line; thence with said Hartzler's <sup>E. Line</sup> N.16° 28' W. 451 feet to a post at V. Kiser's S.W. corner thence with said Kiser's South line N.72° 39' E. 2282 feet to a stake in Road No. 166; thence N.74° 41' E. 1178 feet to a stone at said Kiser's S.E. corner and in the West line of A.B. Grimes' land; thence S.15° 10' E. with said Grimes' W. line and H.E. Evans West line 1634 feet to iron at place of beginning, the last described line passing H.E. Evan's N.W. corner at 65 feet, said tract containing 44.44 acres West of Road No. 166 39.11 acres East of Road No. 166 making a total of 83.55 acres and being the same tract as surveyed Sept. 1934 as shown in Logan County Survey Book 521 Page 50 to 52.

INDEXED ON MAP  
6839

1613 ID-1

INDEXED ON MAP

1934

Smucker Survey ( 64.70 acres )

The following described land in V.M.S. 4479 and V.M.S. 4492 Monroe Township, Logan County Ohio.

Beginning at a stone and a brick in the center of S.H. 607 (State Route 287) said stone being also the center of Road 166 and Station 52+12 of S.H. 607 as shown on Logan County Survey Records L-25 Pages 1 and 2. Thence with center of S.H. 607 N.70°44' E. 134 feet , N.62° 23' E. 1728 feet to an iron at F.M. Wade's N.W. corner; thence with Wade's line S.13° 05' E. 356 feet to a post; N.76° 55' E. 117 feet to a post, S.13° 44' E. 1413 feet; the last described line passing said Wade's S.W. corner, and L.M. Turner's N.W. corner at 1064 feet; thence with said Turner's North line S.77° 27' W. 1849 feet to a stone in center of Road No. 166; thence with center of Road No. 166 N.12° 19' W. 363 feet to a stake; N. 11° 04' W. 513½ feet to an iron, N.27° 50' W. 438½ feet to beginning said tract having 5.61 acres in V.M.W. 4479 59.09 acres in V.M.S. 4492 making a total of 64.70 acres and being the same tract as surveyed Sept.1934 as shown in Logan County Survey Book 521 Pages 53 and 54.

INDEXED ON MAP  
6839

1613 1D2

INDEXED ON MAP



Smucker Survey

V.M.S. 4492  
Monroe Twp.

- A - Stake
- B - Stone on side of post
- C - Post
- D - Stone found. (NOTE: THIS STONE REPLACED BY 3/4" x 30" ROSS (5-7-33) D.E. GILBERT)
- E - 1/2" Iron 36" Long
- F - Stone West side of Post

44,44  
39,11  

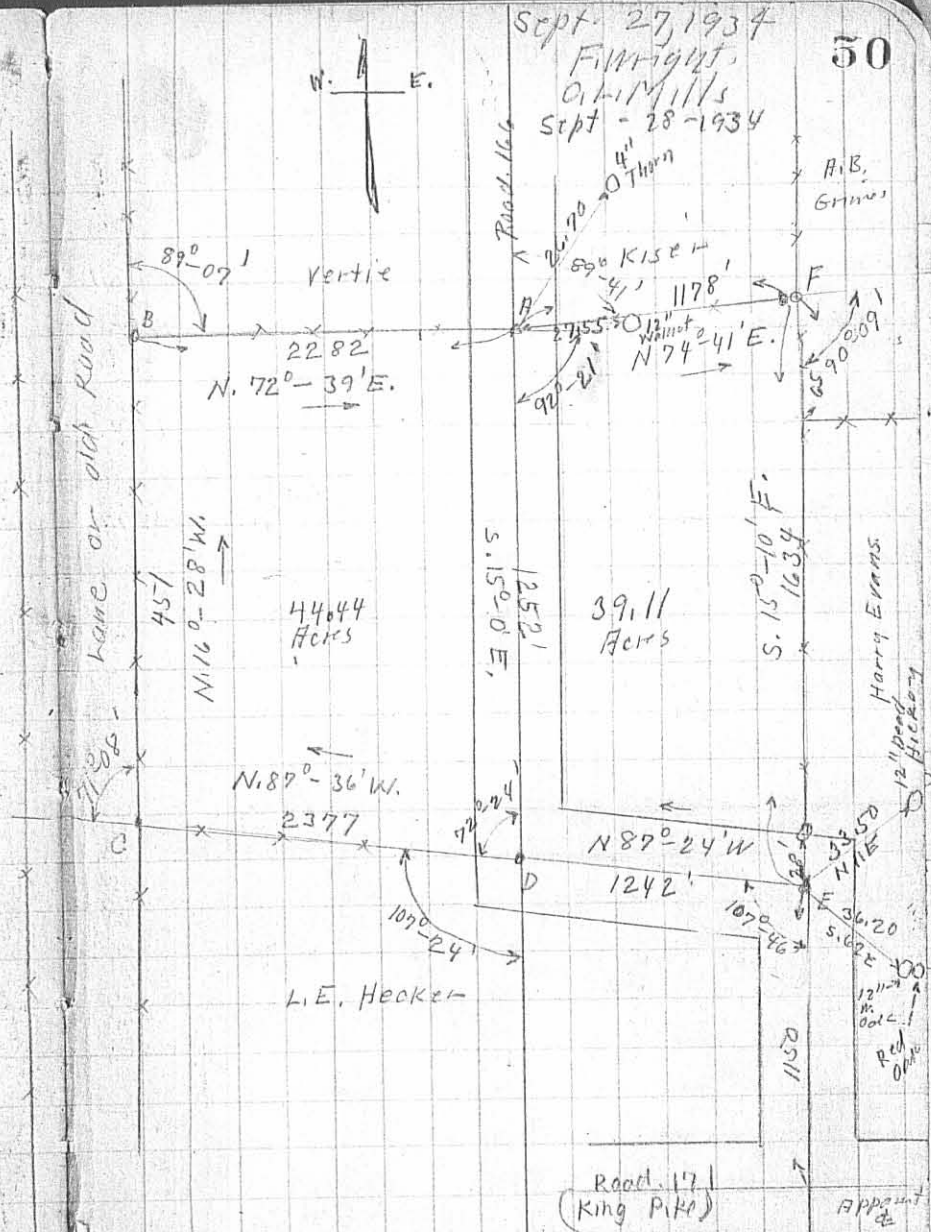
---

83,55

(163)

IP

INDEXED ON MAP



(over)