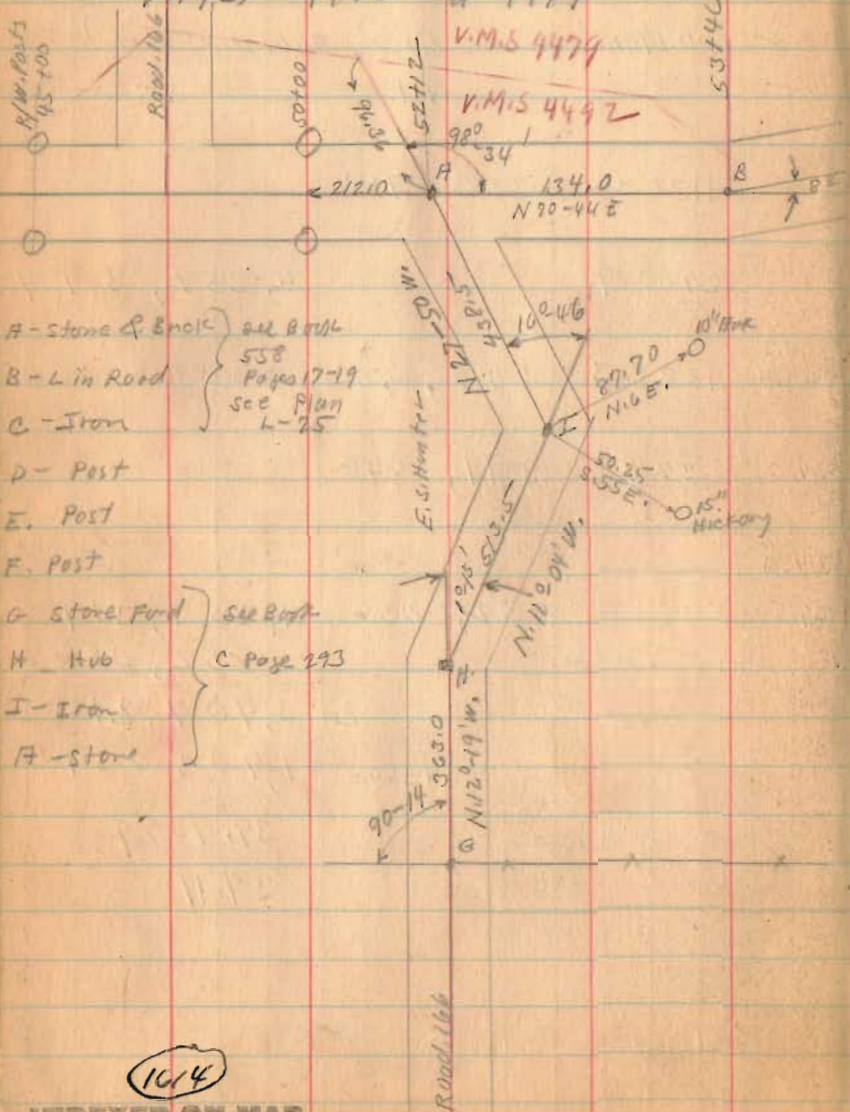
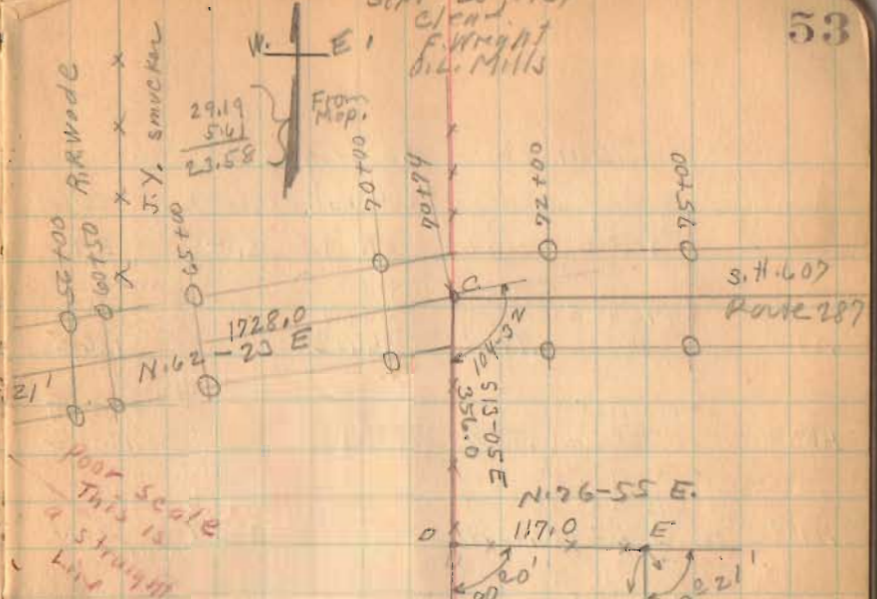


Sept. 28, 1934  
 Clear  
 F. W. Mott  
 Oil Mills

Smucker Survey Monte Tap.  
 V.M.S. 4492 and 4479



- A - Stone & Brick
  - B - L in Road
  - C - Iron
  - D - Post
  - E - Post
  - F - Post
  - G - Stone Ford
  - H - Hub
  - I - Iron
  - F - Stone
- all B.M.'s 558 Pages 17-19 see Plan L-25
- see Book C Page 293



No. evidence in field of V.M.S. line Present Records show 5.61 Acres in V.M.S. 4479

V.M.S. 4479	5.61	Acres
V.M.S. 4492	59.09	"
	64.70	" (south of Road)

S.77°-27' W  
 1849.0

see Book 618 Page 12

1064

## SMUCKER SURVEY

cosine	Bearing Dist	Sine	Lat. (Cosine)		DEPT ET	(Sine) W.-	D.M.I.D	Area (Lat) (D.M.I.D)	
			N. +	S. -				N. +	S. -
3300	N. 70-44 E 134.0	.9440	44.4 44.2		126.5		12.605	5,617	
4606	N. 62-23 E 1728.9	.8861	801.5 801.1		1580.5 1531.2		1783.5	1,429,475	
7740	S. 13-05 E. 356.0	.2204		346.4 346.7	80.6		3394.6		1,175,889
2264	N. 76-55 E 117.0	.9740	26.5		114.0		3589.2	95,114	
9714	S. 13-44 E. 1413.0	.2374		1371.8 1372.6	335.0 335.4		4038.2		5,539,603
2173	S. 77-22 W. 1849.0	.9761		401.4 401.8		1805.4 1804.8	2567.8		1,030,715
9770	N. 12-19 W. 363.0	.2133	354.9 354.7			77.4	685.0	243,107	
9814	N. 11-04 W. 513.5	.1920	504.3 503.9			98.8 98.6	508.8	256,588	
8843	N. 27-50 W. 438.5	.4669	388.0 387.8			205.0 204.7	205.0	79,540	

2119.6 2119.6 2186.6 2186.6  
 2118.2 2121.1 2187.7 2185.5

(2.9)

(2.2)

2,109,441 7,746,207

2,109,441

2 5,636,766

2 2,818,383

64,241