

FB 689

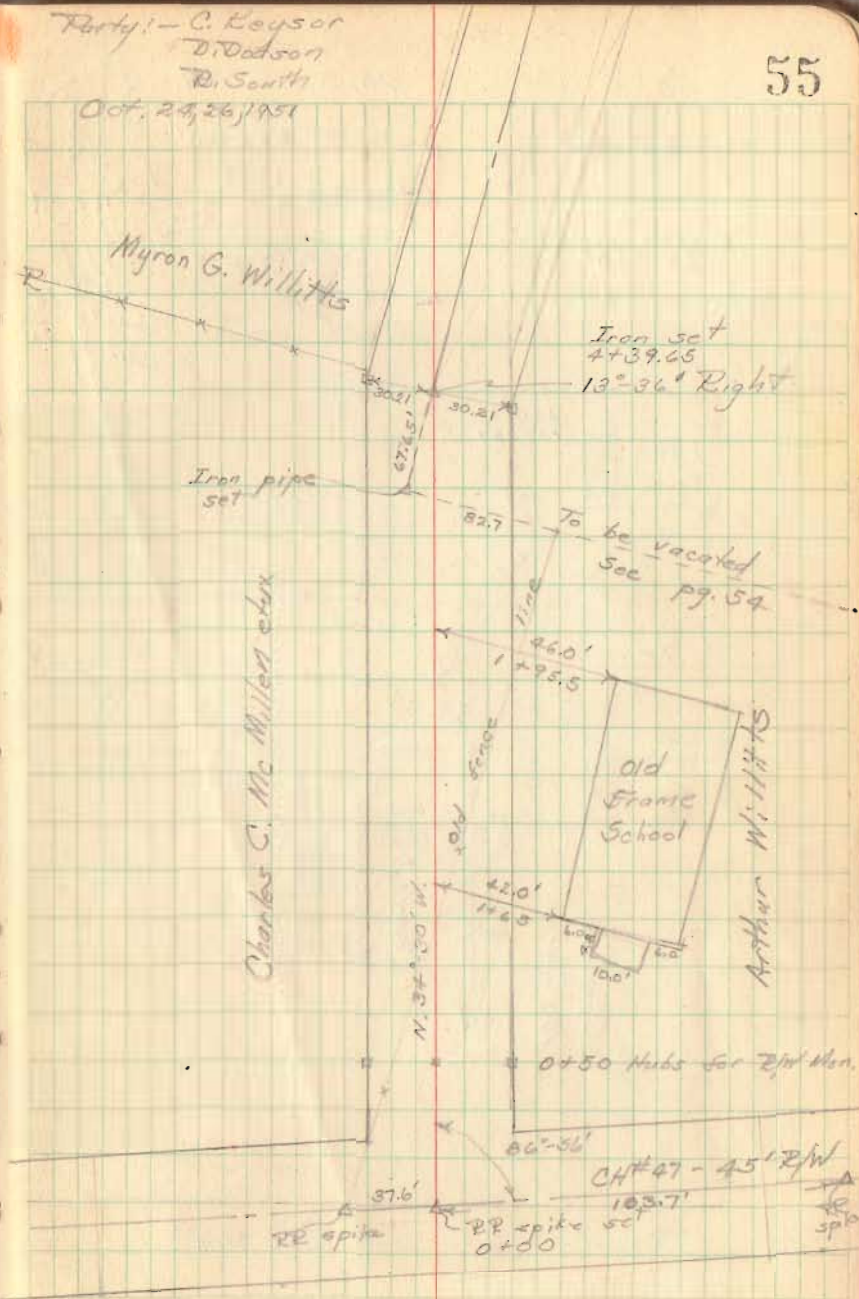
Survey CH #165

Staked 60' Right-of-way.

4+39.65 13°-36' Right - Iron set - Nubs set for RR.

0+50 Nubs set for 2nd Men.

Party! - C. Keyser
D. Dodson
R. Smith
Oct. 24, 26, 1951



Iron set
4+39.65
13°-36' Right

Myron G. Willitts

Iron pipe set

To be vacated
Sec pg. 54

Charles C. McMillan et ux

old
Frame
School

Arthur Willitts

0+50 Nubs set for 2nd Men.

RR spike

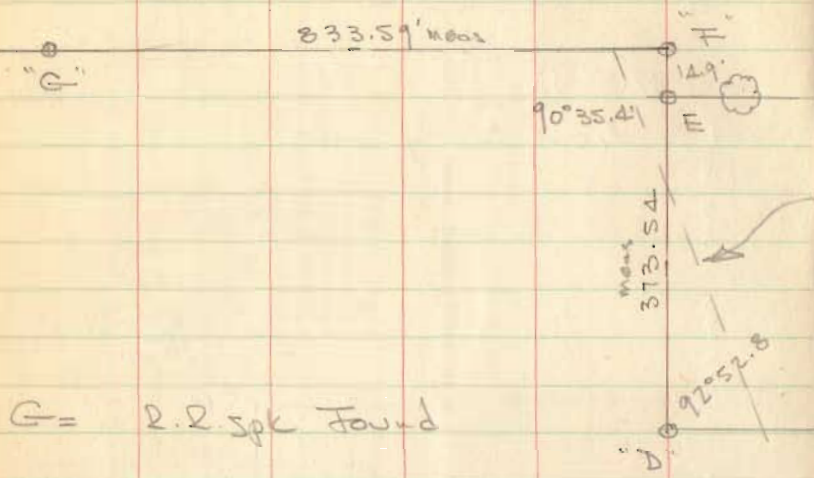
RR spike set
0+00

CH #47 - 45' R/W

RR
spike

FB 689

T.R. 165



G = R.R. spike Found

F = 1" Pipe Set (well Point)

E = 3/4" pipe Found

D = 5/8" ϕ Bar Found St. 19+40.7 6' deep

C = 1" Pipe Found St. 12+89.5

B = R.R. spike Found - Removed & Set 1" Pipe
18" long - 3' deep

A = 0+00 R.R. spike Found 2" deep -
1.50' N. of R.R. spike on surface

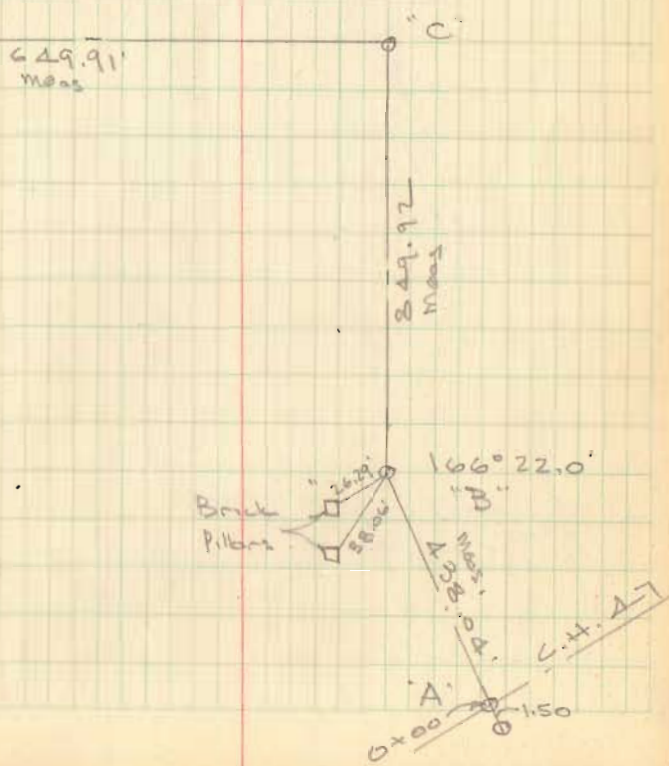
Oct 21, 1981
Dodson
Nichols
D.H.

Oct 6, 1981
Dodson
Nichols
D.H.

57

Stakes Set for R/W Fence
From C to E. 30' N. of E
For 60' Road 10/28/81 D.H.D.

See Pg 58 For Related Δ



FB 689

REVISED CENTERLINE
T.R. 165

EXISTING E "D"-F" RELOCATED
TO "J"-H" BY ORDER OF MOWERS
TWP TRUSTEE & DON LOCKWOOD.

H = $\frac{3}{4}$ " ϕ Bore w/cap stamped 1981 Set
I = " " " " "
J = Nothing Set

Oct 28, 1981

Dobson
Nichols
Dill

58

