

Lee Surveying and Mapping Co.



Farm Surveys • Lot Surveys • Descriptions • Subdivisions

855 EAST SANDUSKY AVENUE
BELLEFONTAINE, OHIO 43311

CLAYTON M. LEE, P. S.
(513) 593-5780

ROBINSON TO COMMAGER

Lying in V.M.S. 3221, Monroe Township, Logan County, Ohio and being out of that 94.38 acre tract deeded and described in Volume 367, Page 902 of the Logan County Records of Deeds and more particularly described as follows:

Beginning at a railroad spike set in the center-line of County Highway No. 28 and lying S 18°-30' E a distance of 250.7 feet from the northwest corner of said 94.38 acres and being Station 128+30.42 in the Logan County Engineers records as recorded in Field Book 706, Page 48.

THENCE, S 89°-00' E, a distance of 179.6 feet to an iron rod set on the northeast side of a corner post.

THENCE, along a fence, N 73°-49'-40" E, a distance of 208.3 feet to an iron rod set at a corner post at the north side of a gate.

THENCE, N 86°-43'-40" E, a distance of 280.1 feet to an iron rod set at the northeast corner of a corner post.

THENCE, S 4°-36' W, a distance of 605.3 feet along a fence, to an iron rod set on a point projected from a line along the north line of the Friend's Church Cemetery.

THENCE, S 82°-15' W, a distance of 403.8 feet to an iron bar found in the center-line of C.H. 28, at Station 122+07.64, and passing through the northeast corner of the cemetery at 203.8 feet and passing an iron rod set in the road right-of-way at 373.1 feet.

THENCE, with the center-line of C.H. 28, N 20°-04'-40" W, to a railroad spike found at Station 127+06.87.

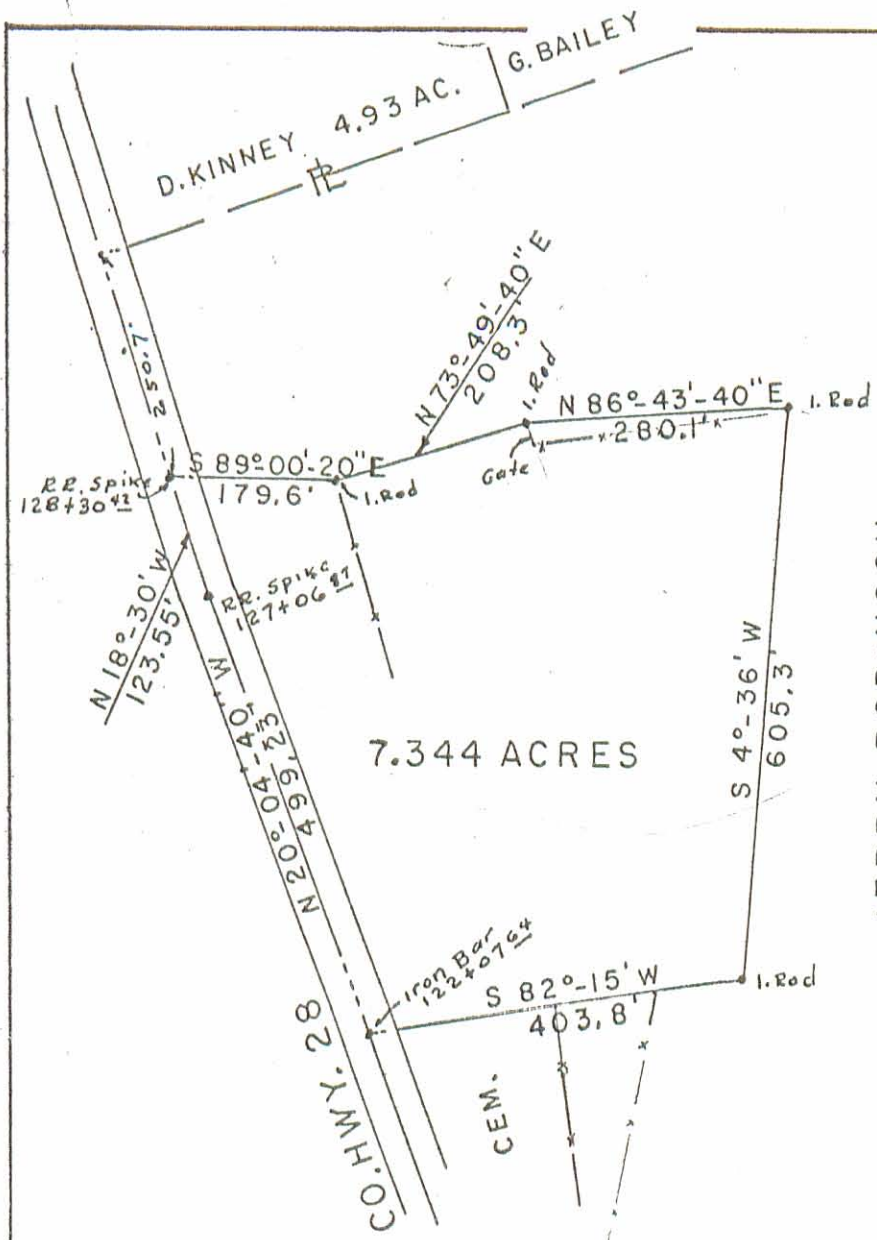
THENCE, continuing with the center-line, N 18°-30' W, a distance of 123.55 feet to the point of beginning. Containing 7.344 acres.

Last previous deed reference: Volume 367, Page 902.

Surveyed by

Clayton M. Lee
Clayton M. Lee
Reg. Surveyor No. 6181
1-4-77





7.344 ACRES

JERRY ROBINSON
94.38 ACRES
VOL. 367, PG. 902

(87,036 AC. REMAINING)

SURVEY OF 7,344 ACRES
OUT OF A 94,38 AC. TRACT
(VOL. 367, PG. 902)
V.M.S. 3221
MONROE TWP., LOGAN CO., O.

SURVEYED BY:

Clayton M. Lee
Clayton M. Lee
Reg. Surveyor 6181

1-4-77

NORTH



SCALE ~ 1" = 200'

5980 IP

INDEXED ON MAP