

PIATT CASTLES CO., Inc.
Commercial Area

The following described real estate situated in the Township of Monroe, County of Logan, State of Ohio and being a part of the present 80.00 Acre tract known as Tract No. I in the name of Piatt Castles Co., Inc. as recorded in Deed Volume No. 364 Pages 598-600 (6-8-1976) and being designated as the Commercial Area and being in Sections No. 15-21, Town 5, Range 13, Between the Miami Rivers Survey and being more particularly described as follows:

Beginning at at one inch round iron bar found at the southeast corner to said 80.00 Acre tract and in the centerline of T. R. No. 47 (Piatt Mill Road) which is 40.00 feet wide;

Thence with the centerline of said T. R. No. 47, N. 4°00'00" W. 100.51 feet to a one inch square iron bar found at Station No. 28+36.00 as shown in Logan County Engineers Field Book No. 707 Page 66;

Thence continuing with the centerline of said T. R. No. 47, N. 31°15'20" W. 192.62 feet to a R. R. Spike set (Note: This line is the Basis of Bearing for this survey);

Thence S. 83°32'20" E. 152.66 feet, N. 30°07'56" E. 254.52 feet, N. 48°08'40" 140.00 feet, N. 20°24'40" E. 63.38 feet, N. 34°33'40" E. 146.68 feet, N. 59°12'40" E. 106.14 feet, N. 75°21'40" E. 168.66 feet, S. 59°11'20" E. 50.78 feet, N. 79°04'55" E. 241.24 feet, S. 4°35'25" E. 279.03 feet, N. 89°20'22" W. 315.58 feet, S. 8°44'40" W. 183.84 feet, N. 84°29'53" W. 230.42 feet, S. 3°52'40" W. 406.83 feet to a wood corner post in the south line of said 80.00 Acre tract and thence S. 87°01'44" W. 339.78 feet to the place of beginning, containing 333,532.60 square feet or 7.657 Acres, more or less.

Of the above described tract, there is 56,569.585 square feet or 1.299 Acres in Section 15, T.5, R.13 and 276,963.015 square feet or 6.358 Acres in Section No. 21, T. 5, R.13.

I hereby certify that this description is the result of a field survey made by me on December 19, 1991.



Daniel E. Gilbert

DANIEL E. GILBERT, P.S.
REG. SUR. NO. 5402
400 N. PARK ST.
BELLEFONTAINE, OHIO 43311
TELEPHONE: 1 (513) 593-1428

INDEXED ON MAP
6508 1D

PIATT CASTLES CO., INC.
 Vol. No. 364 P. 598 (6-8-1976)
 30-145-00-00-029.000

39.500 Acres
 - 6.358 Acres
 33.142 Acres

Commercial Area
 Total: 333,532.60^{sq}
 or
 7.657 Acres

56,569.585^{sq}
 or
 1.299 Acres

40.500 Acres
 - 1.299 Acres
 39.201 Acres

PIATT MILL ROAD
 T.R. No. 47

R. R. Spike Set

S. 83°-32'-20" E.
 152.66'

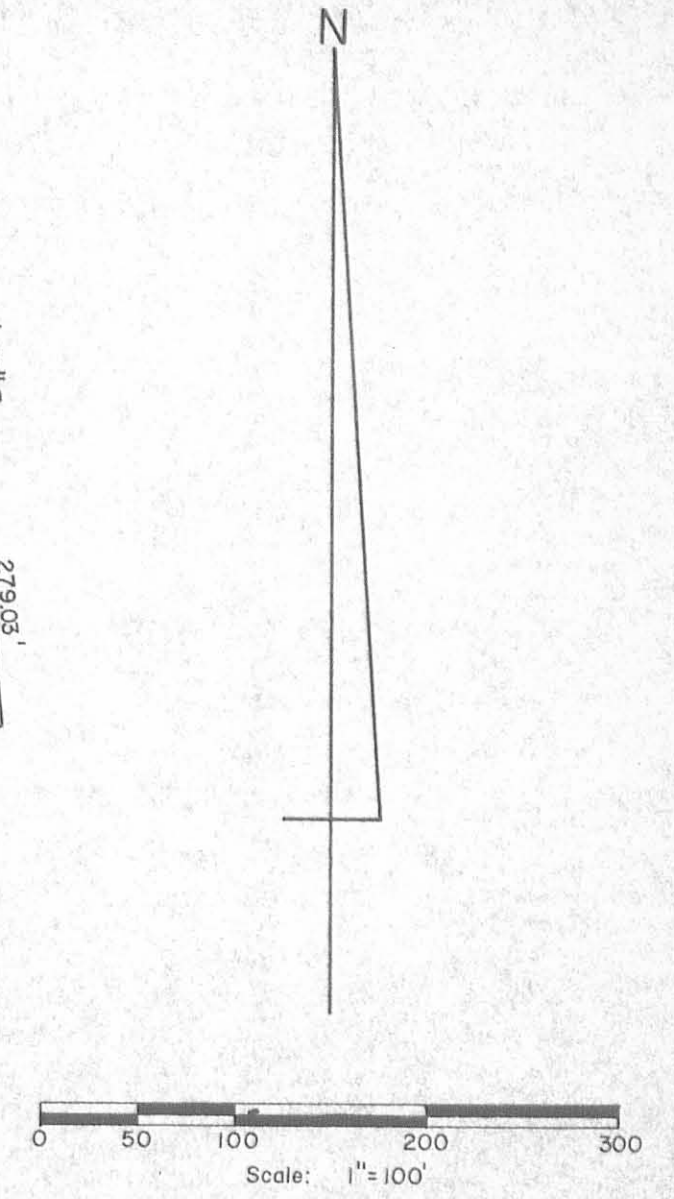
N. 31°-15'-20" W.
 Basis of Bearing

Sta. 28+36.00
 1" Iron Bar Fd.
 Δ = 27°-15'-20" Lt.

1" Iron Bar Fd.

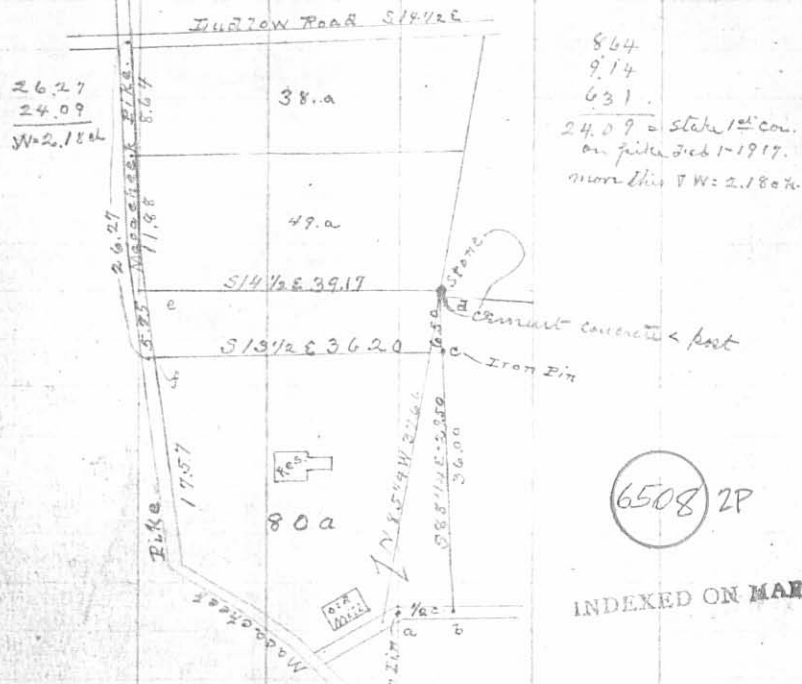
Reference:
 Piatt Mill Road - T.R. No. 47.
 F.B. No. 707 P. 64-66.

INDEXED ON MAP
 6508 1P



TOLERANCES (EXCEPT AS NOTED)	REVISIONS			PIATT CASTLES CO., INC.-Commercial Area. Sections No. 15-21, T.5, R.13 B.M.R.S. Monroe Township, Logan County, Ohio.
	NO.	DATE	BY	
DECIMAL	1			DRAWN BY DEG
±	2			
FRACTIONAL	3			CHK'D DEG
±	4			DATE 12-19-1991
ANGULAR	5			TRACED DEG
±				MATERIAL As Noted
				DRAWING NO. 091-054

Piatt lands near West Liberty O. Feb 1st 1917
 Son Bramble } ch. man.
 H. K. Blair }



864
 914
 631
 24.09 = stake 1st con.
 on pike Feb 1-1917.
 more this ∇ W = 2.180%

(1) Start at iron pin a. Thence north road S 3 1/2 E
 at 5.0 links put in iron pin 3/4" x 12" = b
 with S W. \angle Mill f.d. a N 13 1/2 E 43 1/2 ft
 by camore 18" S 63 W = 25.2' ft

(2) Start at corner \angle post d. Thence N 87 3/4 W
 at 6.50 ch set ∇ = c. Moved this ∇ S 4.9'
 " 14.00 ch ∇ line " " ∇ S 10.5'
 " 36.03 strike line set at 27 N. of b = 6' S of a.
 corner course S 88 1/2 W = 36.00 ch

Piatt Survey, Dec 15th / 21. 1883. 21
 near West Liberty Ohio
 Feb 1st 1917. cold. snow.

(3) Start at NW \angle Piatt land in east tender tract
 of Moccasin pike.
 Thence N. on east pike 24.09 ch to \angle f
 set stake each side east pike at

(4) Start at east Moccasin pike = \angle f = 24.09 of (3)
 Thence S 9 1/4 E
 at 36.00 set ∇
 " 36.63 ∇ at 6.50 of (2) before meet
 " 36.70 ∇ " 6.50 of (2) at meet to Ok \angle Iron pin

Rest Iron pin at \angle 4.9' S of 6.50 of (2)
 with Iron pin \angle c
 Ash Hick 9" N 70 1/2 W = 17.7' S of Hick 7" N 41 E = 19.3'
 W. Oak 14" S 82 E = 35.6'
 Red Oak 12" S 51 1/2 E = 27'

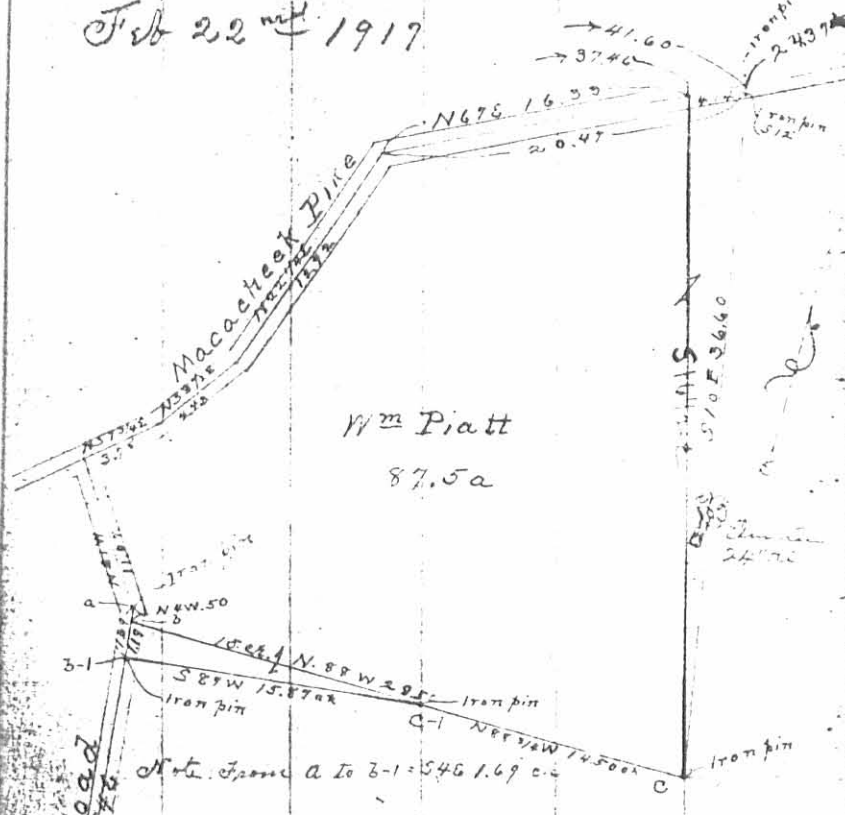
See Logan County Engineer's
 Records for later survey,
 see File 55-409

CITY ENG. FD. BK. 184



Mrs Piatt Resurvey Sec 15 & 21, T. 5 R. 13

Feb 22nd 1917



Mrs Piatt
87.5a

Feb 22nd 1917

Don Brambley ch a
Harry Snyder

Mary H. Worthington
Mrs Piatt

Sec 21, T. 5 R. 13 = 53.65a = 24.5

CITY Edw. F. B. 184

6508 3P

INDEXED ON MAP

INDEXED
308

Piatt Resurvey. Near W. Liberty

23

Feb 22nd 1917

- (1) Start at iron pin SE < Piatt < c
Traverse on old line N88 3/4 W. (to point bearing)
at 14.50 ch set c-1 = iron pin 7/8" x 24"
Hit apple tree N68 1/4 W = 41' apple tree N82 1/4 W = 12.5'
" apple tree 12" N74 E = 28.5'
" " 20 S46 E = 33.6'
- (2) Start at c-1 = 14.50 ch of (1)
Traverse S86 1/4 W (to road) correct. S87 W 16.80
at 6.6 ch at 7 in line Post this N = 1.74'
" 14.2 " " " " N = 4.1'
" 15.87 ch from 4.6 S of iron pin = E - 1 in road

- (3) Start at old iron pin in ang. Mill Road = < a
Traverse along road S4E = 54 E
at 16.9 ch set iron pin 1" x 18" long = < c-1
Hit N E L 1 S F Res N76 1/4 W = 28.7'
Locust 10" N78 E = 14' Locust 8" N31 1/2 E = 9.7'

- (4) Start at 724.09 of (3) on page 21. Move S67 W 3.42 ch
= 27.51 ch from N < Piatt land.

- (5) Start at 3.42 of (4) on Macaheek Pike
Iron pin 1/2" x 30" N. 18 links / Iron pin 1" x 36" S. 18 links.
Traverse S15 E. Corrected course S16 E = 36.00 ch
at 36.00 ch iron pin = SE < Mrs Piatt 80.00 of (1) above
See page 22.

Mrs Piatt Resurvey 2nd Resurvey

25

16.33

Feb 27th 1917

- (1) Start at N end Piatt Mill Road / cut Macaheek Pike
Traverse with center of Pike

N39 1/2 E (421)	33.5	to angle
N22 1/4 E (2112)	35.8	" "
N67 E (3742)	35.8	iron pin
" 41.90	37.4	" "
" (4718)	38.47	" "
N19 E (347)	41.90	to angle
	48.18	Traverse on line

- (2) Start at ... on page 21
Traverse ... to point ...

- (3) Start at cut pipe 3.15 of (2) Traverse on E line
87 1/2 a = 510 1/4 E
at 36.61 Iron pin S. E < 87 1/2 a. at 6.5 of (2) page 20