

Lee Surveying and Mapping Co., Inc.

Land Surveys • Topography • Subdivisions • Construction Layout

117 N. Madriver St.
Bellefontaine OH 43311



Phone: (937) 593-7335
Fax: (937) 593-7444

STRATTON 1.212 ACRES

Lying in Virginia Military Survey 3221, Monroe Township, Logan County, Ohio.

Being out of the Mary K. Stratton 4.212 acre tract as deeded and described in Official Record 358, Page 1 of the Logan County Records of Deeds and being more particularly described as follows:

Beginning at railroad spike found on the center-line of County Highway 29 at the southwest corner of the said 4.212 acre tract and the southeast corner of the Robert E. Devore 19.564 acre tract (O.R. 451, Pg. 982).

THENCE, with the lines of the said 19.564 acre tract, the following two (2) courses:

N 5°-28'-10" W, a distance of 26.07 feet to a 3/4 inch iron rod found.

N 76°-00'-50" E, a distance of 304.21 feet to a 5/8 inch iron rod found.

THENCE, N 51°-01'-55" E, a distance of 82.20 feet to a 5/8 inch iron rod set.

THENCE, N 68°-33'-04" E, a distance of 90.89 feet to a 5/8 inch iron rod set.

THENCE, S 9°-01'-49" E, a distance of 158.61 feet to a 5/8 inch iron rod set.

THENCE, S 74°-50'-58" W, a distance of 343.38 feet to a MAG nail set, passing a 5/8 inch iron rod set at 305.95 feet.

THENCE, with the center-line of County Highway 29 (50 feet wide), N 63°-15'-00" W, a distance of 141.62 feet to a MAG nail found.

THENCE, continuing with the center-line of County Highway 29, S 77°-51'-40" W, a distance of 8.38 feet to the point of beginning.

Containing 1.212 acres, of which 0.098 acre is within the highway right-of-way.

The basis for bearings is the center-line of County Highway 29 east of the angle, being N 63°-15'-00" W, and all other bearings are from angles and distances measured in a field survey by Lee Surveying and Mapping Co., Inc. on September 27, 2001.

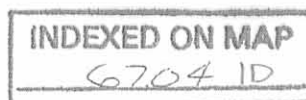
Description prepared by:



ORIGINAL STAMP IN GREEN

Jeffrey I. Lee
Jeffrey I. Lee
Professional Surveyor 6359
October 3, 2001

L-886



REC'D 10-4-01 SUMAC

ROBERT E. DEVORE AND
LOUANNE DEVORE
19.564 ACRES
O.R. 451, PG. 982

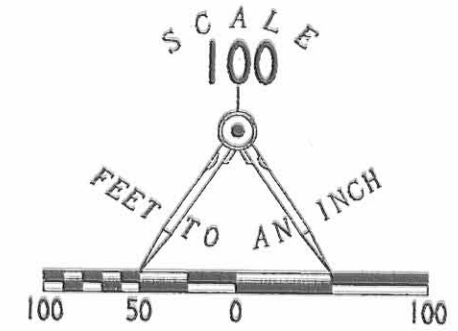
MARY K. STRATTON
4.212 ACRES
O.R. 358, PG. 001

1.212 ACRES
OF WHICH 0.098 ACRE IS WITHIN
THE HIGHWAY RIGHT-OF-WAY



LEGEND

- 5/8 INCH IRON ROD SET
- 5/8 INCH IRON ROD FOUND
- ⊗ 3/4 INCH IRON ROD FOUND
- ⊙ MAG NAIL SET
- MAG NAIL FOUND
- ⊗ RAILROAD SPIKE FOUND



SURVEY OF 1.212 ACRES
OUT OF THE MARY K. STRATTON
4.212 ACRE TRACT
OFFICIAL RECORD 358, PAGE 001
VIRGINIA MILITARY SURVEY 3221
MONROE TOWNSHIP
LOGAN COUNTY, OHIO



ORIGINAL STAMP IN GREEN

SURVEYED BY:

JEFFREY I. LEE
PROFESSIONAL SURVEYOR 6359
SEPTEMBER 27, 2001

COPYRIGHT 2001 BY:
LEE SURVEYING & MAPPING CO., INC.
117 North Madriver Street
BELLEFONTAINE, OHIO 43311
(937) 593-7335

D 404 LOBIAN

L-886-3

2 WORKING DAYS
BEFORE YOU DIG
CALL TOLL FREE 800-362-2764
OHIO UTILITIES PROTECTION SERVICE.

INDEXED ON MAP
67041P

Lee Surveying and Mapping Co.



Farm Surveys • Lot Surveys • Topography • Subdivisions • Construction Layout

855 EAST SANDUSKY AVENUE
BELLEFONTAINE, OHIO 43311

(513) 593-5780

CLAYTON M. LEE, P.S.
JEFFREY I. LEE, P.S.

HAMM 4.212 ACRES (HOUSE LOT)

Lying in V.M.S. 3221, Monroe Township, Logan County, Ohio.

Being out of the southwest corner of that 44.19 acre tract (Deed) 44.212 acres (Actual survey) deeded and described in Volume 369, Page 951 of the Logan County Records of Deeds and more particularly described as follows:

Beginning at a railroad spike set on the center-line of County Road 29 at the most southwesterly corner of the said 44.19 acres and also being a corner in the south line of the Carrie L. Smith 31.58 acres (Volume 328, Page 951) and being a distance of 433.62 feet easterly along said road center-line from the southwest corner of said 31.58 acres.

THENCE, with the boundary of said 31.58 acres, the following three (3) bearings and distances:

N 5°-28'-10" W, a distance of 26.07 feet to an iron rod.
N 76°-00'-50" E, a distance of 304.21 feet to an iron rod.
N 9°-23'-10" W, a distance of 207.56 feet to an iron rod.

THENCE, N 84°-27'-10" E, a distance of 324.51 feet to an iron rod.

THENCE, S 5°-02'-10" E, a distance of 312.92 feet to an iron rod set on the east side of a drainage ditch.

THENCE, with said east side of drainage ditch, S 46°-01'-30" W, a distance of 101.75 feet to an iron rod.

THENCE, S 17°-19'-25" W, a distance of 196.97 feet to a railroad spike set on the center-line of County Road 29.

THENCE, with said road center-line, N 63°-15' W, a distance of 525.48 feet to an iron rod.

THENCE, continuing with said road center-line, S 77°-51'-40" W, a distance of 8.38 feet to the point of beginning. Containing 4.212 acres.

Last previous deed reference: Volume 369, Page 951.



Prepared by:

Clayton M. Lee
Clayton M. Lee
Reg. Surveyor No. 6181
12-2-81
Revised 1-12-82

(6704) 2D-1

Lee Surveying and Mapping Co.



Farm Surveys • Lot Surveys • Topography • Subdivisions • Construction Layout

855 EAST SANDUSKY AVENUE
BELLEFONTAINE, OHIO 43311

(513) 593-5780

CLAYTON M. LEE, P.S.
JEFFREY I. LEE, P.S.

HAMM TO DEVORE

Lying in V.M.S. 3221, Monroe Township, Logan County, Ohio.

Being the greater part of that 44.19 acre tract (Deed) 44.212 acres (This survey) deeded and described in Volume 369, Page 951 of the Logan County Records of Deeds and more particularly described as follows:

Beginning at a railroad spike set on the center-line of County Road 29, being a distance of 33.94 feet northwesterly along said center-line from a railroad spike found on the east line of V.M.S. 3221. Said beginning point being the southeast corner of the said 44.19 acre tract and also being the southwest corner of the Michael Phelps land (Volume 289, Page 469).

THENCE, parallel to and 24.75 feet westerly from the east line of V.M.S. 3221, N 16°-26' W, a distance of 1249.94 feet to an iron rod set at the northwest corner of a one and one-half rod wide lane.

THENCE, with the north line of said lane, N 73°-34' E, a distance of 24.75 feet to an iron rod set on the east line of V.M.S. 3221.

THENCE, with the said east line of V.M.S. 3221, N 16°-26' W, a distance of 1260.11 feet to a corner stone marked with a chiseled '+' found at the southeast corner of the Lee Devore property (Volume 314, Page 907), lying on the west line of the R.O. Slenker 100 acre tract (Volume 348, Page 387) and being southerly along said V.M.S. line a distance of 379.5 feet from the northeast corner of V.M.S. 3221.

THENCE, with the south line of said Devore land, S 73°-01' W, a distance of 690.68 feet to an iron set at the northeast corner of a 1.5 acre tract also lying in the name of Devore and also being the northwest corner of said 44.19 acres.

THENCE, with the east line of said 1.5 acres and the east line of the Carrie Smith 31.58 acres (Volume 328, Page 951), S 0°-00'-30" W, a distance of 1090.57 feet to an iron rod.

THENCE, continuing with the Smith east line, S 9°-23'-10" E, a distance of 15.83 feet to an iron rod set on the northwest corner of a 4.212 acre tract (Also part of said 44.212 acres).

THENCE, with the boundary of said 4.212 acres the following four (4) bearings and distances:

N 84°-27'-10" E, a distance of 324.51 feet to an iron rod set on the east side of a ditch.

S 5°-02'-10" E, a distance of 312.92 feet to an iron rod set on the east

side of a ditch.

S 46°-01'-30" W, a distance of 101.75 feet to an iron rod.

S 17°-19'-25" W, a distance of 196.97 feet to a railroad spike set on

the center-line of County Road 29.

THENCE, with said road center-line, S 63°-15' E, a distance of 1260.89 feet to the point of beginning. Containing 40.00 acres.

Last previous deed reference: Volume 369, Page 951.

Prepared by:

Clayton M. Lee
Clayton M. Lee

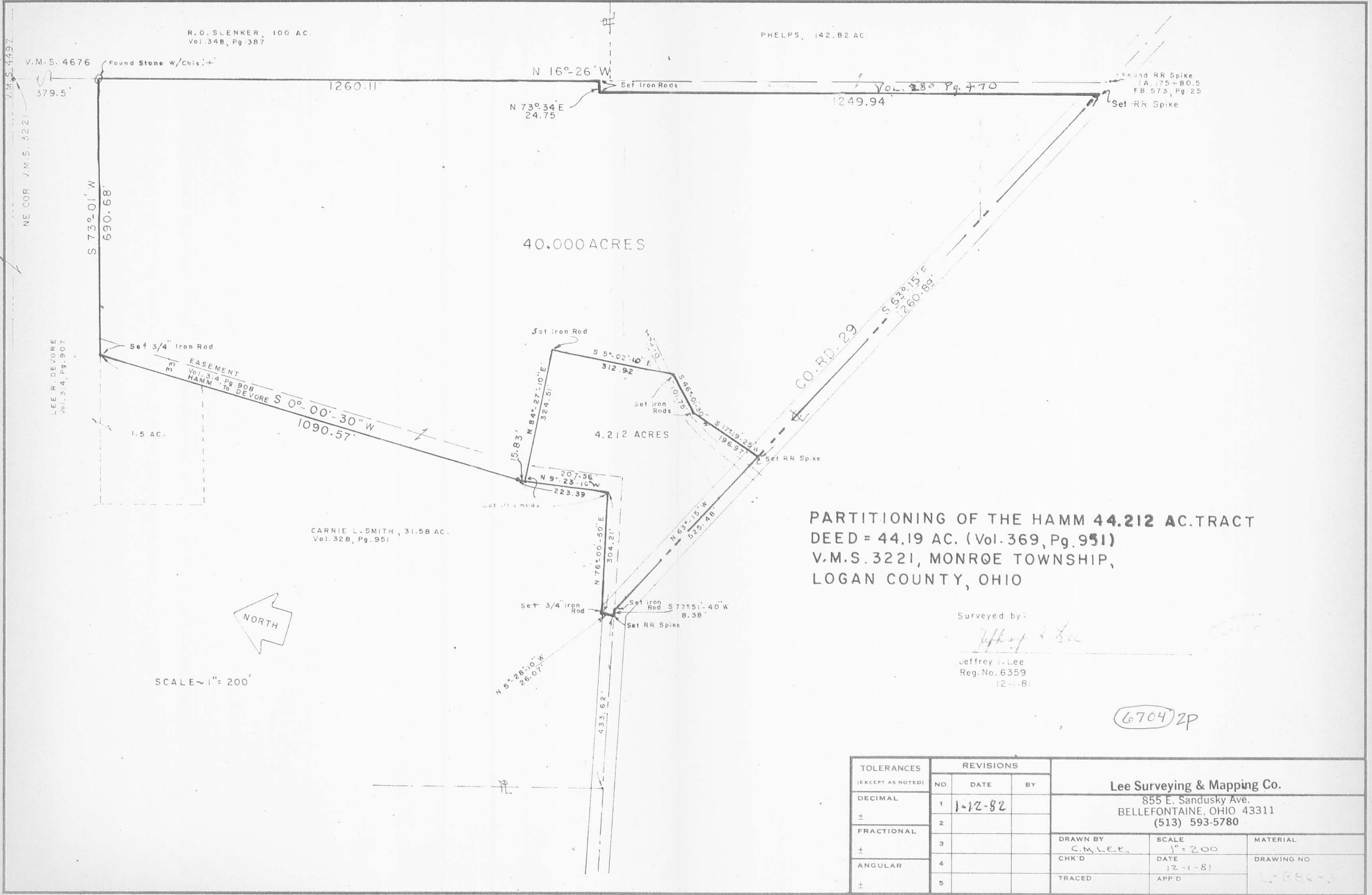
Reg. Surveyor No. 6181

12-2-81

*Revised 1-12-82



(6704) 2D-2



PARTITIONING OF THE HAMM 44.212 AC. TRACT
 DEED = 44.19 AC. (Vol. 369, Pg. 951)
 V.M.S. 3221, MONROE TOWNSHIP,
 LOGAN COUNTY, OHIO

Surveyed by:
Jeffrey I. Lee

Jeffrey I. Lee
 Reg. No. 6359
 12-1-81



SCALE ~ 1" = 200'

6704 2P

TOLERANCES (EXCEPT AS NOTED)	REVISIONS			Lee Surveying & Mapping Co. 855 E. Sandusky Ave. BELLEFONTAINE, OHIO 43311 (513) 593-5780		
	NO.	DATE	BY			
DECIMAL	1	1-12-82		DRAWN BY C.M. LEE	SCALE 1" = 200'	MATERIAL
±	2					
FRACTIONAL	3			CHK'D	DATE 12-1-81	DRAWING NO. L-884-3
±	4					
ANGULAR	5			TRACED	APP'D	
±						