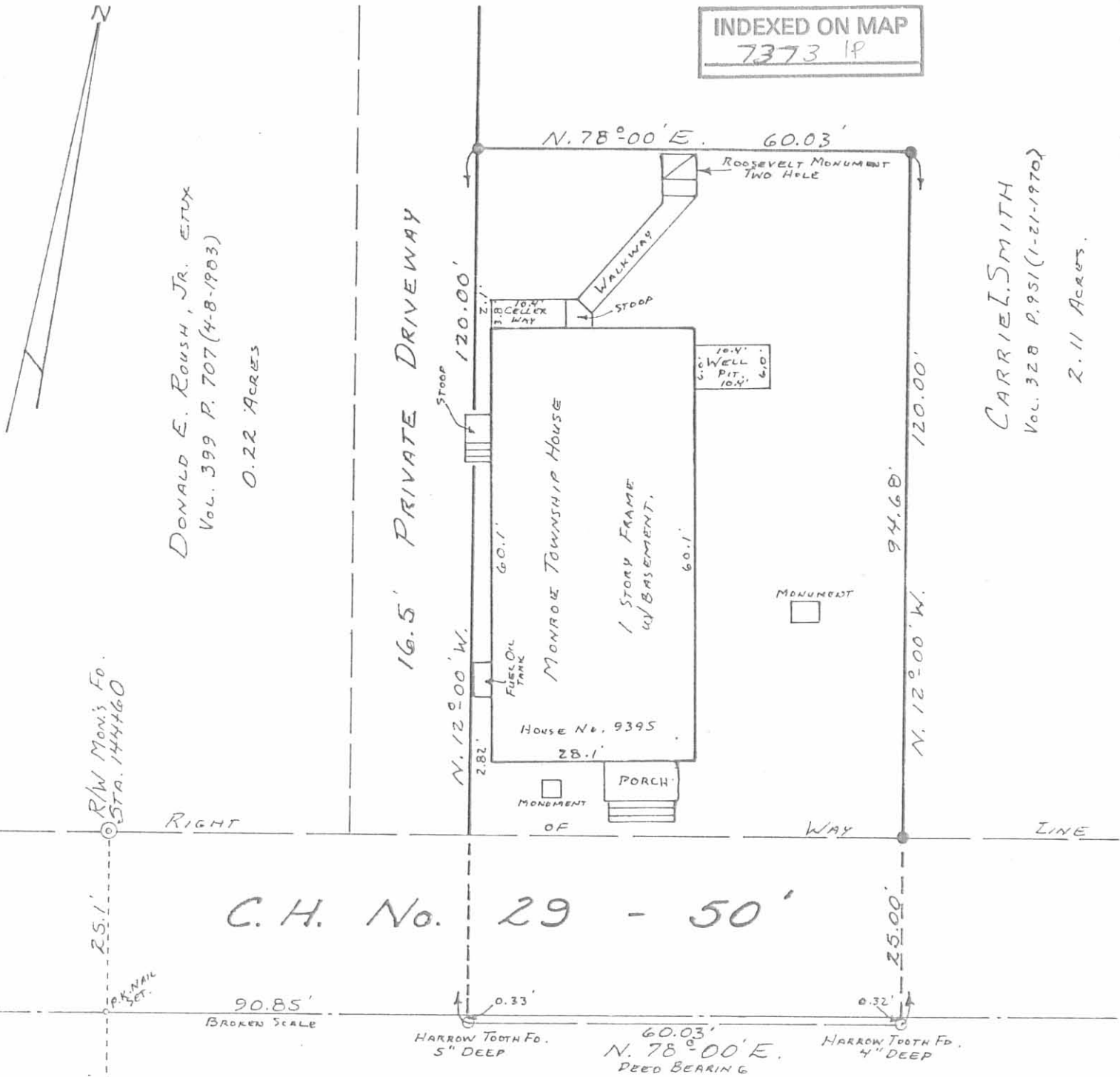


INDEXED ON MAP
7373 1P



DONALD E. ROUSH, JR. ETUX
Vol. 399 P. 707 (4-8-1903)
0.22 ACRES

CARRIEL SMITH
Vol. 328 P. 951 (1-21-1970)
2.11 ACRES.

R/W Mon's Fd.
STA. 144460

25.1' P.K. NAIL SET.

25.1'

DEED OF RECORD:
ELWOOD M. OUTLAND
to
ST. CLAIR JEWELL ETAL
TOWNSHIP TRUSTEES OF MONROE TWP.
Vol. 118 P. 304 (4-17-1917)
0.17 ACRES.

Daniel E. Gilbert
DANIEL E. GILBERT, P.S.
REG. SUR. NO. 5402
LOGAN COUNTY DEPUTY SURVEYOR



MONROE TOWNSHIP TRUSTEES
SURVEY
V.M.S. No. 3221
"PICKRELLTOWN"
MONROE TOWNSHIP
LOGAN COUNTY, OHIO
MAY 6, 1986

SCALE: 1" = 20'

CHESTER R. KURTZ - COUNTY ENGINEER