

Received 12-31-85 OK E.C.P.

Lee Surveying and Mapping Co.



Farm Surveys • Lot Surveys • Topography • Subdivisions • Construction Layout

855 EAST SANDUSKY AVENUE
BELLEFONTAINE, OHIO 43311

(513) 593-5780

CLAYTON M. LEE, P.S.
JEFFREY I. LEE, P.S.

DAVID TRABERT 4.00 ACRE SURVEY

Lying in V.M.S. 3225, Monroe Township, Logan County, Ohio.

Being out of that 103.2 acre tract lying in the name of Robert and Wanda Trabert as deeded and described in Volume 379, Page 792 (Tract 2) of the Logan County Records of Deeds and being more particularly described as follows:

Beginning at a railroad spike set on the center-line of State Route 287, a distance of 576.5 feet easterly along said center-line from the grantor's west property line. The west property line being at Station 151+80 and the beginning point of this survey at 157+56.5 (See County Engineer's Field Book 558, Page 26 to 28).


THENCE, close to the perimeter of a wooded area, the following 5 bearings and distances:

N 53°-03'-20" E, a distance of 254.12 feet to a 5/8" iron rod.
S 28°-30' E, a distance of 346.72 feet to a 5/8" iron rod.
S 9°-31'-30" E, a distance of 315.74 feet to a 5/8" iron rod.
S 48°-05'-20" E, a distance of 355.78 feet to a 5/8" iron rod.
S 45°-37'-20" W, a distance of 181.04 feet to a railroad spike set on the center-line of State Route 287.

THENCE, with said center-line, N 33°-54' W, a distance of 997.12 feet to the point of beginning.

Containing 4.00 acres.

Prepared by:



Clayton M. Lee
Professional Surveyor No. 6181
December 26, 1985

This description prepared from an actual field survey.



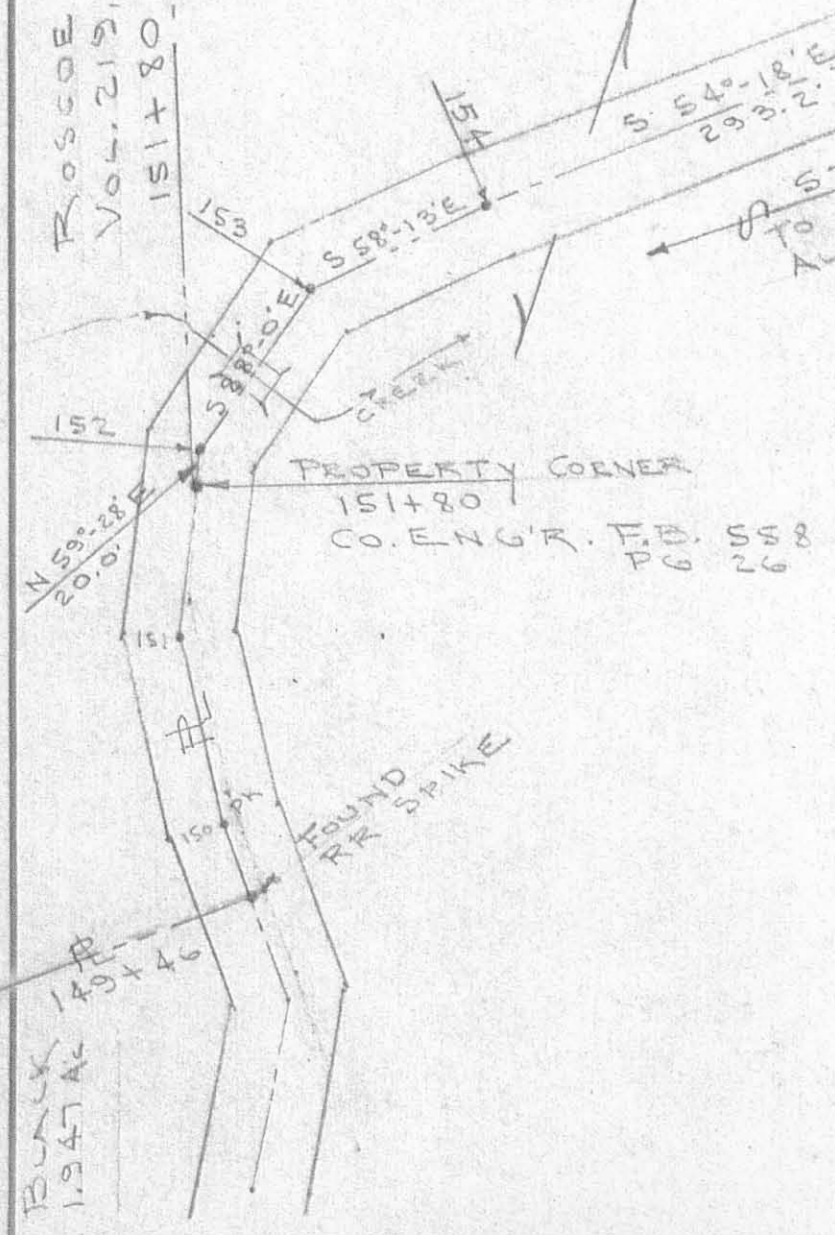
ORIGINAL STAMP IN GREEN

L-1352



ROSCOE GREEN, 112.1 AC.
VOL. 219, PG. 492

ROBERT L. & WANDA TRABERT
103.2 ACRES
DEED VOL. 319, PG. 792 (TRACT 2)



• INDICATES
5/8" IRON ROD SET

SURVEY OF 4.00 ACRES OUT OF THE
TRABERT 103.2 ACRE TRACT (VOL. 319, PG. 792)
V.M.S. 3225, MONROE TWP.
LOGAN COUNTY, OHIO

SCALE 1" = 100'



ORIGINAL STAMP IN GREEN

By: *Jeffrey I. Lee*
JEFFREY I. LEE
PROF. SURVEYOR 6359
DEC. 19, 1985

INDEXED ON MAP
7468 IP

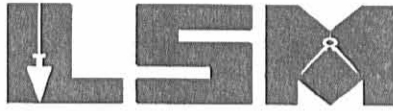
TOLERANCES (EXCEPT AS NOTED)	REVISIONS			DRAWN BY C.M.L.	SCALE 1" = 100'	MATERIAL		
	NO.	DATE	BY					
DECIMAL	1			CHK'D	DATE	DRAWING NO. L-1352-3		
±	2							
FRACTIONAL	3						TRACED	APP'D
±	4							
ANGULAR	5							

REC'D 12-10-04 SML/ak

Lee Surveying and Mapping Co., Inc.

Land Surveys • Topography • Subdivisions • Construction Layout

117 N. Madriver St.
Bellefontaine OH 43311



Phone: (937) 593-7335
Fax: (937) 593-7444

TRABERT 5.000 ACRES

Lying in Virginia Military Survey 3225, Monroe Township, Logan County, Ohio.

Being out of the Wanda F. Trabert original 27.655 acre tract as deeded and described in Official Record 617, Page 30 of the Logan County Records of Deeds and being more particularly described as follows:

Beginning at a 1 inch iron bar found on the intersection of center-lines of Ohio Route 287 and County Highway 28.

THENCE, with the center-line of Ohio Route 287 (60 feet wide), the following three courses:

N 48°-58'-13"W, a distance of 431.02 feet to a railroad spike found.

N 48°-57'-28"W, a distance of 140.37 feet to a railroad spike found.

N 37°-46'-19"W, a distance of 303.33 feet to a MAG nail set.

THENCE, with the easterly line of the Scott A. Musser 4.00 acre tract (O.R. 638, Pg. 987), N 41°-45'-01"E, a distance of 181.04 feet to a 5/8 inch iron rod set, passing a 5/8 inch iron rod set at 30.51 feet.

THENCE, S 55°-47'-25"E, a distance of 716.63 feet to a MAG nail set, passing a 5/8 inch iron rod set at 684.96 feet.

THENCE, with the center-line of County Highway 28 (60 feet wide), S 15°-31'-16"W, a distance of 360.17 feet to the point of beginning.

Containing 5.000 acres, of which 0.821 acre is within the highway rights-of-way.

The basis for bearings is the center-line of County Highway 28, being S 15°-31'-16"W, and all other bearings are from angles and distances measured in a field survey by Lee Surveying and Mapping Co., Inc. on December 6, 2004.



ORIGINAL STAMP IN GREEN

Description prepared by:

Jeffrey I. Lee
Jeffrey I. Lee
Professional Surveyor 6359
December 7, 2004

L-1352

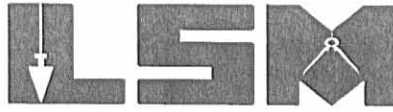
INDEXED ON MAP
7468 2D-1

REC'D 12-10-04 SUM/EC

Lee Surveying and Mapping Co., Inc.

Land Surveys • Topography • Subdivisions • Construction Layout

117 N. Madriver St.
Bellefontaine OH 43311



Phone: (937) 593-7335
Fax: (937) 593-7444

TRABERT 24.490 ACRES

Lying in Virginia Military Survey 3225, Monroe Township, Logan County, Ohio.

Being out of the Wanda F. Trabert original 27.655 acre tract as deeded and described in Official Record 617, Page 30 of the Logan County Records of Deeds and being more particularly described as follows:

Beginning at a 1 inch iron bar found on the intersection of center-lines of Ohio Route 287 and County Highway 28.

THENCE, with the center-line of County Highway 28 (60 feet wide), N 15°-31'-16"E, a distance of 360.17 feet to a MAG nail set at the TRUE POINT OF BEGINNING.

THENCE, N 55°-47'-25"W, a distance of 716.63 feet to a 5/8 inch iron rod set, passing a 5/8 inch iron rod set at 31.67 feet.

THENCE, with the northeasterly lines of the Scott A. Musser 4.00 acre tract (O.R. 638, Pg. 987), the following three courses:

N 51°-54'-20"W, a distance of 355.92 feet to a 5/8 inch iron rod found.

N 13°-24'-12"W, a distance of 315.76 feet to a 5/8 inch iron rod found.

N 32°-25'-04"W, a distance of 346.54 feet to a 5/8 inch iron rod found.

THENCE, with the lines of the M. Edward Wenger 15.799 acre tract (O.R. 475, Pg. 694), the following two courses:

N 51°-52'-10"E, a distance of 550.70 feet to a 5/8 inch iron rod found.

S 63°-54'-24"E, a distance of 541.60 feet to a 5/8 inch iron rod found.

THENCE, with the lines of the Michael J. Alloway 8.06 acre tract (O.R. 535, Pg. 870), the following two courses:

S 33°-50'-41"W, a distance of 428.55 feet to a point on a large boulder, passing a 5/8 inch iron rod set at 426.55 feet.

S 87°-24'-42"E, a distance of 711.47 feet to a 1-1/4 inch iron rod found, passing 5/8 inch iron rods set at 2.00 feet and 680.69 feet.

THENCE, with the center-line of County Highway 28, S 15°-31'-16"W, a distance of 971.36 feet to the point of beginning.

Containing 24.490 acres, of which 0.663 acre is within the highway right-of-way.

The basis for bearings is the center-line of County Highway 28, being S 15°-31'-16"W, and all other bearings are from angles and distances measured in a field survey by Lee Surveying and Mapping Co., Inc. on December 6, 2004.

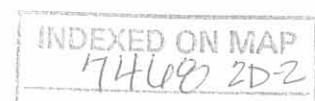


ORIGINAL STAMP IN GREEN

Description prepared by:

A handwritten signature in black ink, appearing to read 'Jeffrey I. Lee'.
Jeffrey I. Lee
Professional Surveyor 6359
December 7, 2004

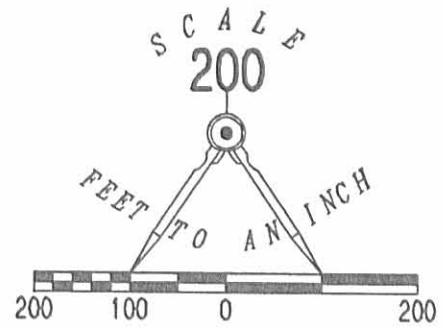
L-1352



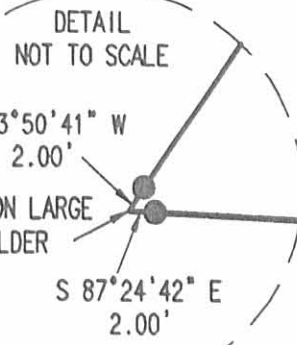
LEGEND:

- 1 INCH IRON BAR FOUND
- ⊗ RAILROAD SPIKE FOUND
- MAG NAIL SET
- 5/8 INCH IRON ROD SET
- 5/8 INCH IRON ROD FOUND
- ⊙ 1-1/4 INCH IRON ROD FOUND

M. EDWARD WENGER
15.799 ACRES
O.R. 475, PG. 694



MICHAEL J. ALLOWAY
8.06 ACRES
O.R. 535, PG. 870



POINT ON LARGE BOULDER
(SEE DETAIL)

24.490 ACRES

OF WHICH 0.663 ACRE IS WITHIN THE HIGHWAY RIGHT-OF-WAY

WANDA F. TRABERT
ORIGINAL 27.655 ACRES
O.R. 617, PG. 30

5.000 ACRES
OF WHICH 0.821 ACRE IS WITHIN THE HIGHWAY RIGHTS-OF-WAY

**SURVEY OF TWO TRACTS
OUT OF THE
WANDA F. TRABERT
ORIGINAL 27.655 ACRE TRACT
OFFICIAL RECORD 617, PAGE 30
VIRGINIA MILITARY SURVEY 3225
MONROE TOWNSHIP
LOGAN COUNTY, OHIO**

INDEXED ON MAP
7460 2P



CALL TOLL FREE **800-362-2764**

OHIO UTILITIES PROTECTION SERVICE



ORIGINAL STAMP IN GREEN

SURVEYED BY:

Jeffrey I. Lee
JEFFREY I. LEE
PROFESSIONAL SURVEYOR 6359
DECEMBER 6, 2004

COPYRIGHT 2004 BY:
LEE SURVEYING & MAPPING CO., INC.
117 North Madriver Street
BELLEFONTAINE, OHIO 43311
(937) 593-7335

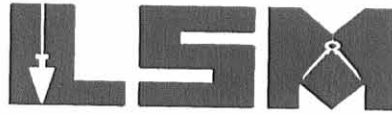
KSR D413 1352114 L-1352-3

PLOT 12-10-04 SWM 02L

Lee Surveying and Mapping Co., Inc.

Land Surveys • Topography • Subdivisions • Construction Layout

117 N. Madriver St.
Bellefontaine OH 43311



Phone: (937) 593-7335
Fax: (937) 593-7444

TRABERT 55.746 ACRES

Lying in Virginia Military Survey 3225, Monroe Township, Logan County, Ohio.

Being out of the Robert L. Trabert and Wanda F. Trabert original 103.20 acre tract as deeded and described in Volume 379, Page 792, Tract 2 of the Logan County Records of Deeds and being more particularly described as follows:

Beginning at a 1 inch iron bar found at the intersection of the center-lines of Ohio Route 287 and County Highway 28.

THENCE, with the center-line of Ohio Route 287 (60 feet wide), S 48°-36'-38" E, a distance of 20.63 feet to a 1 inch iron bar found.

THENCE, with the center-line of Township Road 169 (60 feet wide), S 35°-23'-14" W, a distance of 55.52 feet to a 1 inch iron bar found.

THENCE, with the north lines of the Linda K. Norton 4.31 acre tract (O.R. 457, Pg. 507) and the Jarold D. Bryant 34.217 acre tract (O.R. 497, Pg. 287), S 71°-25'-50" W, a distance of 1564.59 feet to a 5/8 inch iron rod found, passing a 5/8 inch iron rod set at 50.99 feet.

THENCE, with the east line of the Steven T. Bangs, Trustee, 89.030 acre tract (O.R. 475, Pg. 594), N 19°-05'-52" W, a distance of 2119.38 feet to a railroad spike found, passing a 5/8 inch iron rod found at 2085.78 feet.

THENCE, with the center-line of Ohio Route 287, the following twelve (12) courses:

- S 76°-01'-43" E, a distance of 112.14 feet to a MAG nail set;
- S 81°-52'-35" E, a distance of 100.00 feet to a railroad spike found;
- N 64°-04'-51" E, a distance of 100.15 feet to a P.K. nail found;
- N 33°-04'-47" E, a distance of 99.95 feet to a MAG nail set;
- N 42°-38'-01" E, a distance of 100.00 feet to a MAG nail set;
- N 57°-33'-31" E, a distance of 100.00 feet to a 5/8 inch iron rod found;
- S 89°-53'-51" E, a distance of 99.17 feet to a P.K. nail found;
- S 61°-54'-12" E, a distance of 93.10 feet to a 5/8 inch iron rod found;
- S 57°-56'-29" E, a distance of 293.01 feet to a 5/8 inch iron rod found;

INDEXED ON MAP
7468 3D-1

Lee Surveying and Mapping Co., Inc.

Land Surveys • Topography • Subdivisions • Construction Layout

117 N. Madriver St.
Bellefontaine OH 43311



Phone: (937) 593-7335
Fax: (937) 593-7444

S 37°-46'-17" E (basis for bearings), a distance of 1363.14 feet to a P.K. nail found;

S 45°-51'-16" E, a distance of 139.86 feet to a railroad spike found;

S 48°-40'-34" E, a distance of 431.07 feet to the point of beginning.

Containing 55.746 acres, of which 2.126 acres are within the highway rights-of-way.

The basis for bearings is the center-line of Ohio Route 287, being S 37°-46'-17" E, and all other bearings are from angles and distances measured in a field survey by Lee Surveying and Mapping Co., Inc. on February 27, 2002.

Description prepared by:

A handwritten signature in black ink, appearing to read 'Jeffrey I. Lee'.

Jeffrey I. Lee
Professional Surveyor 6359
March 5, 2002

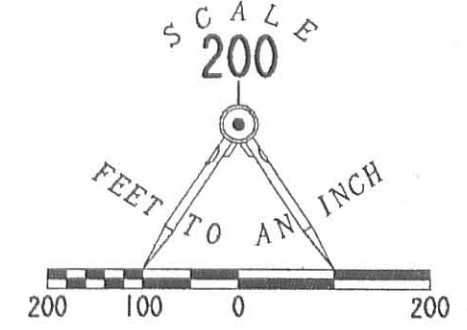


ORIGINAL STAMP IN GREEN

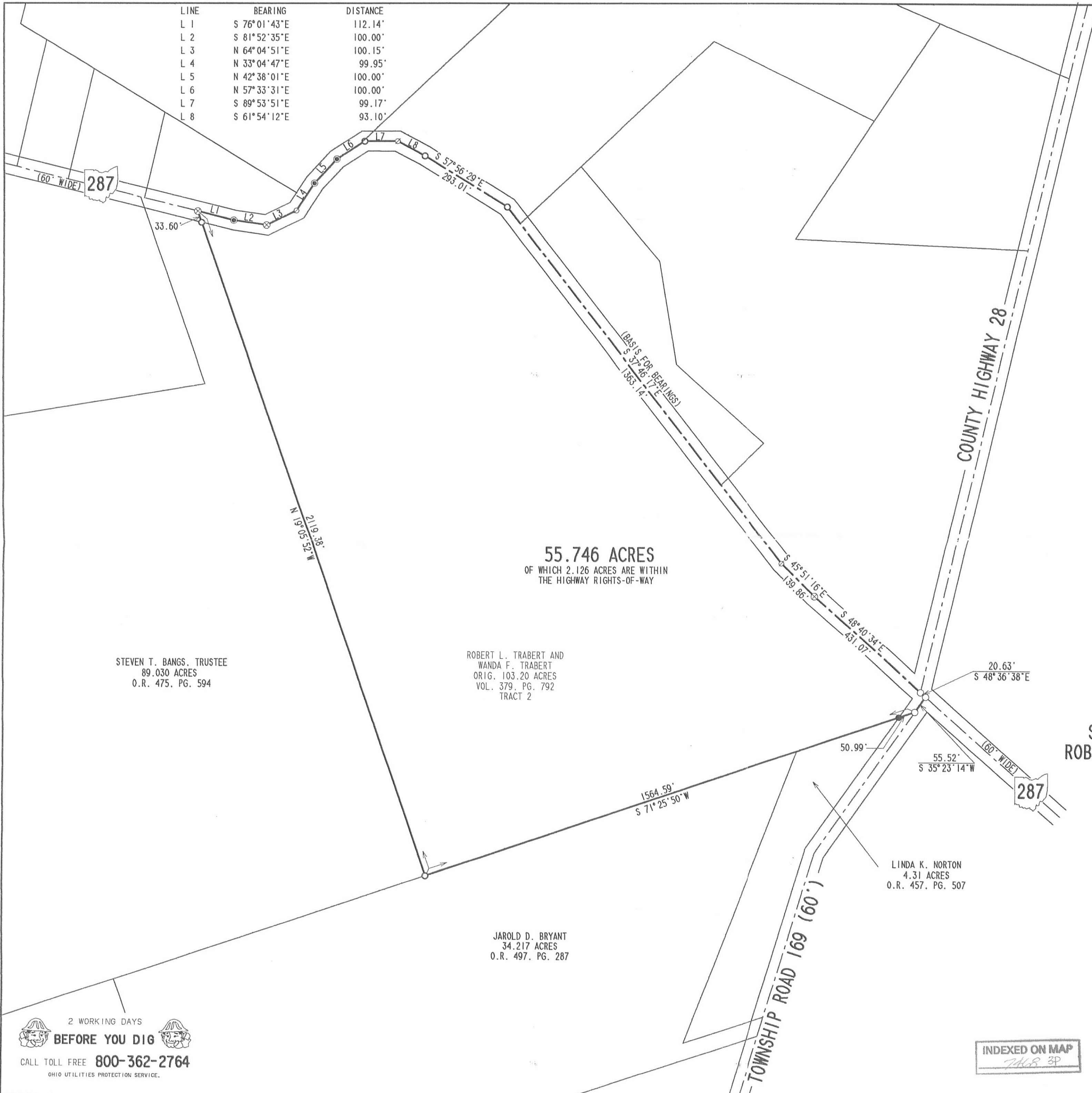
L-1352

INDEXED ON MAP
7468 3D-2

LINE	BEARING	DISTANCE
L 1	S 76° 01' 43" E	112.14'
L 2	S 81° 52' 35" E	100.00'
L 3	N 64° 04' 51" E	100.15'
L 4	N 33° 04' 47" E	99.95'
L 5	N 42° 38' 01" E	100.00'
L 6	N 57° 33' 31" E	100.00'
L 7	S 89° 53' 51" E	99.17'
L 8	S 61° 54' 12" E	93.10'



- LEGEND
- 5/8 INCH IRON ROD SET
 - 5/8 INCH IRON ROD FOUND
 - 1 INCH IRON BAR FOUND
 - ⊙ MAG NAIL SET
 - ⊗ P.K. NAIL FOUND
 - ⊗ RAILROAD SPIKE FOUND



55.746 ACRES
 OF WHICH 2.126 ACRES ARE WITHIN
 THE HIGHWAY RIGHTS-OF-WAY

STEVEN T. BANGS, TRUSTEE
 89.030 ACRES
 O.R. 475, PG. 594

ROBERT L. TRABERT AND
 WANDA F. TRABERT
 ORIG. 103.20 ACRES
 VOL. 379, PG. 792
 TRACT 2

LINDA K. NORTON
 4.31 ACRES
 O.R. 457, PG. 507

JAROLD D. BRYANT
 34.217 ACRES
 O.R. 497, PG. 287

**SURVEY OF 55.746 ACRES OUT OF THE
 ROBERT L. TRABERT AND WANDA F. TRABERT
 ORIGINAL 103.20 ACRE TRACT
 VOLUME 379, PAGE 792, TRACT 2
 VIRGINIA MILITARY SURVEY 3225
 MONROE TOWNSHIP
 LOGAN COUNTY, OHIO**

2 WORKING DAYS
BEFORE YOU DIG
 CALL TOLL FREE **800-362-2764**
 OHIO UTILITIES PROTECTION SERVICE.

INDEXED ON MAP
 MBR 3P



SURVEYED BY:

 JEFFREY I. LEE
 PROFESSIONAL SURVEYOR 6359
 FEBRUARY 27, 2002

COPYRIGHT 2002 BY:
LEE SURVEYING & MAPPING CO., INC.
 117 North Madriver Street
 BELLEFONTAINE, OHIO 43311
 (937) 593-7335

Received 11-2-00 O.K.GCH

Lee Surveying and Mapping Co., Inc.

Land Surveys • Topography • Subdivisions • Construction Layout

117 N. Madriver St.
Bellefontaine OH 43311



Phone: (937) 593-7335
Fax: (937) 593-7444

TRABERT 15.799 ACRES

Lying in Virginia Military Survey 3225, Monroe Township, Logan County, Ohio.

Being out of the Robert L. Trabert and Wanda F. Trabert original 103.20 acre tract as deeded and described in Volume 379, Page 792, Tract 2 of the Logan County Records of Deeds and being more particularly described as follows:

Beginning at a P.K. nail found at the northwest corner of the said 103.20 acre tract and at Station 151 + 80 of the Logan County Engineer's Field Book 558, Page 26, for State Route 287.

THENCE, with the southeasterly line of the M. Edward Wenger 31.501 acre tract (O.R. 296, Pg. 24, Tract II), N 52°-21'-20" E, a distance of 1148.66 feet to a point on the center-line of Macochee Creek, passing a 5/8 inch iron rod set at 66.10 feet and a reference 4 inch steel post found at 1119.78 feet.

THENCE, with the center-line of Macochee Creek and the southerly lines of the John A. McQueen 161.591 acre tract (O.R. 296, Pg. 38) and the Mary Ann Green 11.50 acre tract (O.R. 147, Pg. 239, Tract III), S 67°-01'-22" E, a distance of 962.07 feet to a point on the center-line of Macochee Creek.

THENCE, with the west line of the Daniel Darasko 8.06 acre tract (O.R. 256, Pg. 271), S 33°-50'-41" W, a distance of 355.56 feet to a 5/8 inch iron rod set, passing a reference 5/8 inch iron rod found at 19.69 feet.

THENCE, N 63°-54'-24" W, a distance of 541.60 feet to a 5/8 inch iron rod set.

THENCE, S 51°-52'-10" W, a distance of 550.70 feet to a 5/8 inch iron rod found.

THENCE, with the northwesterly line of the Elizabeth S. Donnan 4.00 acre tract (O.R. 301, Pg. 228), S 49°-09'-35" W, a distance of 254.09 feet to a MAG nail set, passing a 5/8 inch iron rod found at 224.08 feet.

THENCE, with the center-line of State Route 287 (60 feet wide) the following five courses:

N 37°-46'-19" W, a distance of 63.48 feet to a 5/8 inch iron rod found.

N 58°-14'-03" W, a distance of 292.99 feet to a 5/8 inch iron rod found at Station 154 + 00.

N 62°-10'-57" W, a distance of 93.11 feet to a P.K. nail found at Station 153 + 00.

Lee Surveying and Mapping Co., Inc.

Land Surveys • Topography • Subdivisions • Construction Layout

117 N. Madriver St.
Bellefontaine OH 43311



Phone: (937) 593-7335
Fax: (937) 593-7444

S 89°-48'-54" W, a distance of 99.18 feet to a railroad spike found at Station 152+00.

S 57°-12'-07" W, a distance of 18.93 feet to the place of beginning.

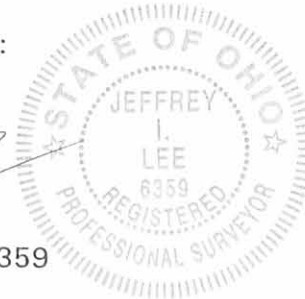
Containing 15.799 acres of which 0.376 acre is within the highway right-of-way.

The basis for bearings is the center-line of County Highway 28 being N 13°-25'-50" E, and all other bearings are from angles and distances measured in a field survey by Lee Surveying and Mapping Co., Inc. on October 19, 2000.

Description prepared by:

A handwritten signature in black ink, appearing to read 'Jeffrey I. Lee', is written over the printed name and title.

Jeffrey I. Lee
Professional Surveyor 6359
October 23, 2000



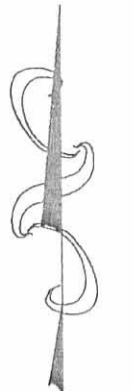
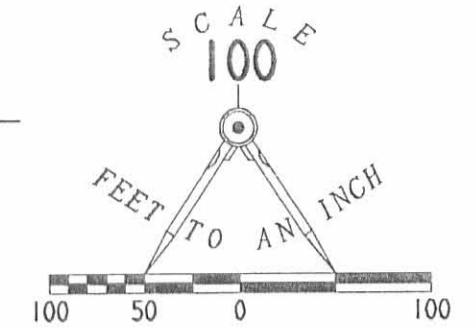
ORIGINAL STAMP IN GREEN

L-1352

JOHN A. McQUEEN
AND BONNIE J. McQUEEN
161.591 ACRES
O.R. 296. PG. 38

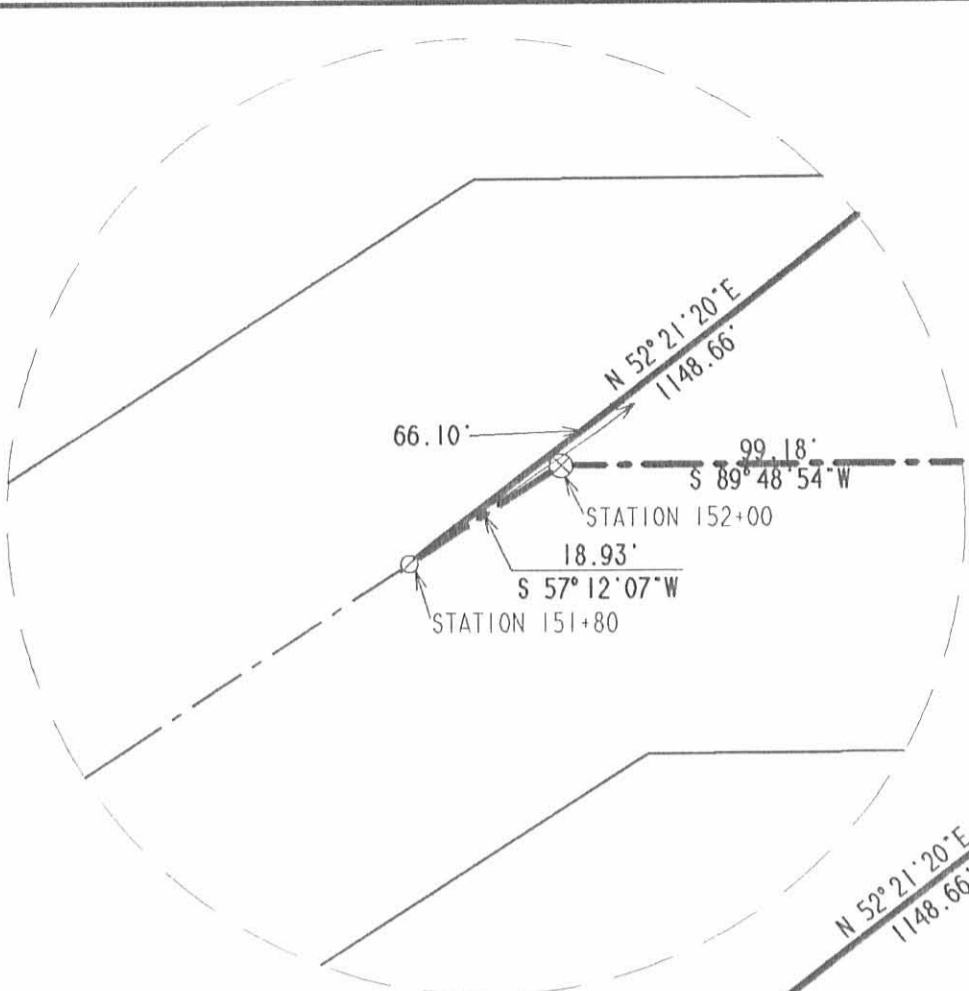
M. EDWARD WENGER
AND MELODY L. WENGER
31.501 ACRES
O.R. 296. PG. 24
TRACT II

MARY ANN GREEN
11.50 ACRES
O.R. 147. PG. 239
TRACT III



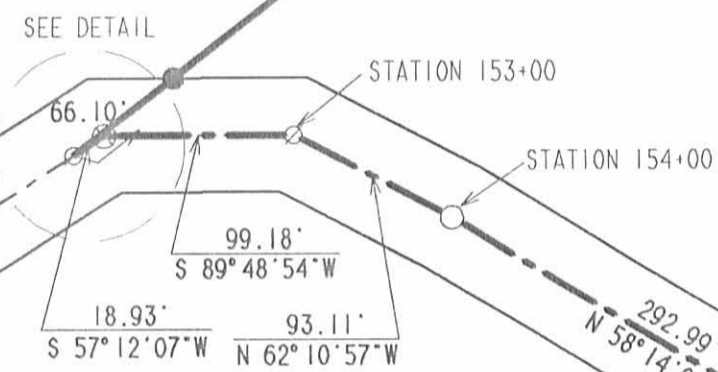
LEGEND:

- 5/8 INCH IRON ROD SET
- ⊙ MAG NAIL SET
- 5/8 INCH IRON ROD FOUND
- ⊗ RAILROAD SPIKE FOUND
- ⊠ 4 INCH STEEL POST FOUND
- ⊘ P.K. NAIL FOUND



DETAIL
SCALE: 1" = 20'

REFERENCES:
LOGAN COUNTY ENGINEER'S
FIELD BOOK 558. PG. 26



SEE DETAIL

15.799 ACRES
OF WHICH 0.376 ACRE IS WITHIN
THE HIGHWAY RIGHT-OF-WAY

ROBERT L. TRABERT
AND WANDA F. TRABERT
103.20 ACRES
VOL. 379. PG. 792
TRACT 2

DANIEL DARASKO
8.06 ACRES
O.R. 256. PG. 271

ELIZABETH S. DONNAN
4.00 ACRES
O.R. 301. PG. 228

COUNTY HIGHWAY 28
N 13°-25'-50" E
(BASIS FOR BEARINGS)

SURVEY OF 15.799 ACRES OUT OF THE
ROBERT L. TRABERT AND WANDA F. TRABERT
103.20 ACRE TRACT
VOLUME 379, PAGE 792, TRACT 2
VIRGINIA MILITARY SURVEY 3225
MONROE TOWNSHIP
LOGAN COUNTY, OHIO

SURVEYED BY:

Jeffrey Lee
JEFFREY L. LEE
PROFESSIONAL SURVEYOR 6359
OCTOBER 19, 2000



COPYRIGHT 2000 BY:
LEE SURVEYING & MAPPING CO., INC.
117 North Madriver Street
BELLEFONTAINE, OHIO 43311
(937) 593-7335

ORIGINAL STAMP IN GREEN

D-389

RTRABERT

L-1352-2

2 WORKING DAYS
BEFORE YOU DIG
CALL TOLL FREE 800-362-2764
OHIO UTILITIES PROTECTION SERVICE.

7468 4P

10-1-15

Lee Surveying and Mapping Co., Inc.

Land Surveys • Topography • Subdivisions • Construction Layout



Phone: (937) 593-7335
Fax: (937) 593-7444
surveys@lsminc.us

SALMONOWICZ 6.821 ACRES

Lying in Virginia Military Survey 3225, Monroe Township, Logan County, Ohio.

Being out of the David M. Salmonowicz and Jean M. Salmonowicz 24.490 acre tract as deeded and described in Official Record 754, Page 986 of the Logan County Records of Deeds and being more particularly described as follows:

Commencing at a 1 inch iron bar found at the intersection of center-lines of Ohio Route 287 (60 feet wide) and County Highway 28 (60 feet wide).

THENCE, with the center-line of County Highway 28, N 15°-31'-16"E, a distance of 838.35 feet to a MAG nail set, at the TRUE POINT OF BEGINNING.

THENCE, N 76°-52'-48"W, a distance of 695.59 feet to a 5/8 inch iron rod set, passing a 5/8 inch iron rod set at 30.03 feet.

N 15°-46'-00"E, a distance of 363.07 feet to a point on a large bolder, referenced by a 5/8 inch iron rod found that bears N 33°-50'-41"E, a distance of 2.00 feet.

THENCE, with the south line of the Daniel A. Napier 8.06 acre tract (O.R. 1093, Pg. 327), S 87°-24'-42"E, a distance of 711.47 to a 1 1/4 inch iron rod found, passing a 5/8 inch iron rods found at 2.00 feet and 680.68 feet.

THENCE, with the center-line of County Highway 28, S 15°-31'-16"W, a distance of 493.16 feet to the point of beginning.

Containing 6.821 acres of which 0.338 acre is within the highway right-of-way.

Property is subject to any and all previous easements and rights-of-way of record.

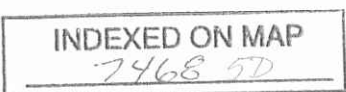
The basis for bearings is the center-line of County Highway 28, being N 15°-31'-16"E, and all other bearings are from angles and distances measured in a field survey by Lee Surveying and Mapping Co., Inc. on September 29, 2015.

Description prepared by:

William K. Bruce
William K. Bruce
Professional Surveyor 7437
September 29, 2015

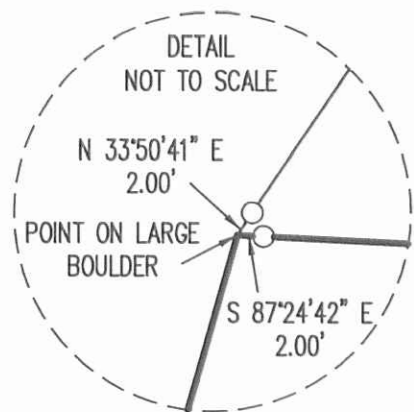


L-13520915

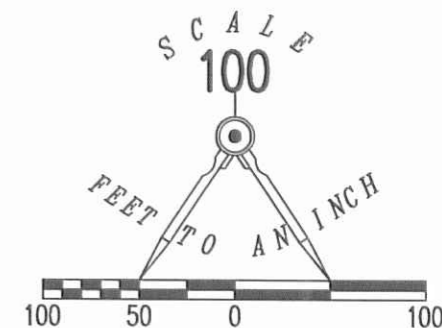


10-1-15

APPROVED



DANIEL A. NAPIER
8.06 ACRES
O.R. 1093, PG. 327



N 15°46'00" E
363.07'

SEE DETAIL

S 87°24'42" E
711.47'

30.79'

COUNTY HIGHWAY 28 (60')

6.821 ACRES
OF WHICH 0.338 ACRE IS WITHIN THE
HIGHWAY RIGHT-OF-WAY.

LEGEND:

- 5/8 INCH IRON ROD SET WITH PLASTIC I.D. CAP STAMPED "LSM7437"
- 5/8 INCH IRON ROD FOUND
- ⊙ MAG NAIL SET
- 1 INCH IRON BAR FOUND
- ⊙ 1-1/4 INCH IRON ROD FOUND

DAVID M. SALMONOWICZ AND JEAN M. SALMONOWICZ
24.490 ACRE TRACT
O.R. 754, PG. 986

695.59'
N 76°52'48" W

A SURVEY OF A 6.821 ACRE TRACT OUT OF
DAVID M. SALMONOWICZ AND
JEAN M. SALMONOWICZ
24.490 ACRE TRACT
OFFICIAL RECORD 754, PAGE 986
VIRGINIA MILITARY SURVEY 3225
MONROE TOWNSHIP
LOGAN COUNTY, OHIO

SURVEYED BY:

30.03'
838.35'
N 15°31'16" E
BASIS FOR BEARINGS

493.16'
S 15°31'16" W

OHIO ROUTE 287 (60')

TOWNSHIP ROAD 169



William K. Bruce
WILLIAM K. BRUCE
PROFESSIONAL SURVEYOR 7437
SEPTEMBER 29, 2015

COPYRIGHT 2015 BY:
LEE SURVEYING & MAPPING CO., INC.
117 North Madriver Street
BELLEFONTAINE, OHIO 43311
(937) 593-7335
WWW.LSMINC.US
surveys@lsminc.us

ADW D0915 13520915 L-1352-3

2 WORKING DAYS
BEFORE YOU DIG
CALL TOLL FREE **800-362-2764**
OHIO UTILITIES PROTECTION SERVICE

INDEXED ON MAP
7468 5P

5-26-2023



**DESCRIPTION OF SURVEY FOR
BOBBIE JO TRABERT SMITH
1.525 ACRES
May 24, 2023**

The following described 1.525 acre tract of land is situated in Virginia Military Survey 3225, Monroe Township, Logan County, Ohio and being part of Robert E. Trabert's and Catherine A. Trabert's 55.746 acre tract described in Official Record Volume 560, page 94, said 1.525 acre tract of land more particularly described as follows:

Beginning at a 1 inch iron bar found at the intersection of the centerline of State Route 287 (60 feet wide) with the centerline of County Road 28 (60 feet wide), said iron bar also in the northeast line of said 55.746 acre tract;

Thence **South 46°27'31" East 20.61 feet**, following the centerline of State Route 287 and the northeast line of said 55.746 acre tract, to a 1 inch iron bar found at the northernmost point in the centerline of Township Road 169 (60 feet wide);

Thence **South 37°32'35" West 55.50 feet**, following the centerline of Township Road 169 and the southeast line of said 55.746 acre tract, to a 1 inch iron bar found at the northeast corner of Shane J. Freehauf's and Jessica L. Freehauf's Exhibit "A" (4.31 acres) described in Official Record Volume 1404, page 5400;

Thence **South 73°33'19" West 375.76 feet**, departing from the centerline of Township Road 169, following the north line of said 4.31 acre tract and the south line of said 55.746 acre tract, passing a 5/8 inch iron bar found at 50.99 feet, to a 5/8 inch iron bar found at the northeast corner of Joel R. Karg, Trustee's Tract 1 (34.217 acres) described in Official Record Volume 1330, page 974;

Thence **North 24°01'10" East 403.37 feet**, crossing said 55.746 acre tract, passing an iron bar set at 371.56 feet, to a magnetic nail set in the centerline of State Route 287;

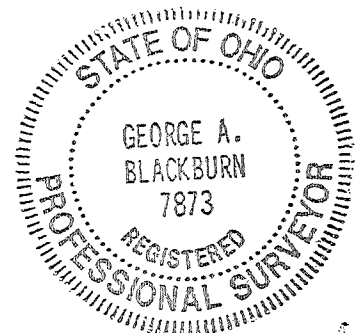
Thence **South 46°32'04" East 296.34 feet**, following the centerline of State Route 287 and the northeast line of said 55.746 acre tract, to the **place of beginning, containing 1.525 acres** more or less and subject to all valid easements and restrictions of record.

The road right-of-way of State Route 287 (60 feet wide) and Township Road 169 (60 feet wide) contain a total of 0.248 acres.

The above description was prepared from an actual field survey made by Blackburn Surveying, LLC, George A. Blackburn, Registered Surveyor # 7873, during the month of May 2023. Iron bars set are 5/8 inch by 30 inch reinforcing rods with plastic caps marked "Blackburn RS # 7873." Bearings indicated herein are based on the centerline of State Route 287 (60 feet wide) bearing South 46°32'04" East.

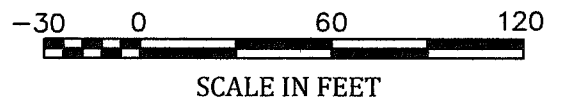
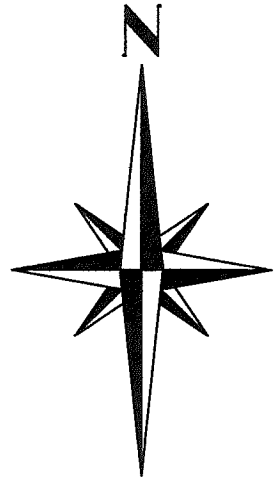
Description prepared by:  5-24-2023

George A. Blackburn, RS # 7873
6879 State Route 287
West Liberty, Ohio 43357
(937) 465-0424



5-24-2023
APPROVED

PLAT OF SURVEY IN
 VIRGINIA MILITARY SURVEY 3225
 MONROE TOWNSHIP
 LOGAN COUNTY, OHIO



Robert E. Trabert and
 Catherine A. Trabert
 55.746 acres
 O.R. 560, pg. 94

1.525 Acres

(0.248 Acres inside road right-of-way)

Robert E. Trabert and
 Catherine A. Trabert
 55.746 acres
 O.R. 560, pg. 94

5/8" IRON
 BAR FOUND

Shane J. Freehauf and
 Jessica L. Freehauf
 Exhibit "A", 4.31 acres
 O.R. 1404, pg. 5400

**LOGAN COUNTY ACCESS
 MANAGEMENT REGULATIONS:**

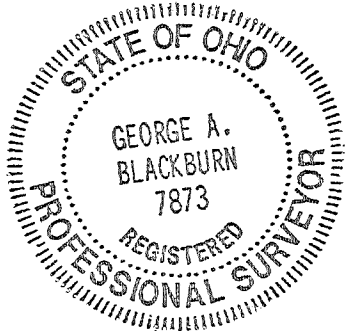
Township Road 169 is classified as
 a local road.

Proposed driveways are to be
 located $\geq 250'$ from an existing
 driveway or road intersection.

Stopping sight distance is $\geq 495'$.

LEGEND

- RAILROAD SPIKE FOUND
- MAGNETIC NAIL SET
- 1" IRON BAR FOUND
UNLESS OTHERWISE NOTED
- 5/8" IRON BAR SET
- P.O.B. PLACE OF BEGINNING



5/8" IRON
 BAR FOUND

Joel R. Karg, Trustee
 Tract 1, 34.217 acres
 O.R. 1330, pg. 974

I HEREBY CERTIFY THAT THIS PLAT WAS PREPARED FROM AN ACTUAL
 FIELD SURVEY AND THAT MONUMENTS WERE PLACED AS INDICATED HEREON.

George A. Blackburn
 GEORGE A. BLACKBURN, R.S. 7873

5-24-2023

BLACKBURN SURVEYING, LLC
 6879 STATE ROUTE 287
 WEST LIBERTY, OHIO 43357
 (937) 465-0424

DATE: 5/24/2023
 SCALE: 1" = 60'

FILE: Bobbie Smith 5-23

PLAT PREPARED FOR
 BOBBIE JO TRABERT SMITH

Sheet
 1
 of
 1

INDEXED ON MAP
 7468