

REC'D 11-15-96 SMY OK ✓



Lee Surveying and Mapping Co., Inc.



Farm Surveys • Lot Surveys • Topography • Subdivisions • Construction Layout

117 NORTH MADRIVER STREET
BELLEFONTAINE, OHIO 43311

(937) 593-7335
FAX (937) 593-7444

PHYLLIS J. WILBER 10.704 ACRES

Lying in Virginia Military Survey 3226, Monroe Township, Logan County, Ohio.

Being out of the Phyllis J. Wilber original 103.5 acre tract as deeded and described in Official Record 122, Page 722, and 6.171 acre tract as deeded and described in Official Record 266, Page 377 of the Logan County Records of Deeds and being more particularly described as follows:

Beginning at a 3/4 inch bolt found on the south line of Virginia Military Survey 3226 on the center-line of Ohio Route 287 (Station 210 + 63.6) and at the southeast corner of both of the said original 103.5 and 6.171 acre tracts.

THENCE, with the south line of Virginia Military Survey 3226 and the center-line of Ohio Route 287, S 75°-30'-05" W, a distance of 50.00 feet to a MAG nail set at the TRUE POINT OF BEGINNING.

THENCE, with the south line of Virginia Military Survey 3226 and the center-line of Ohio Route 287, S 75°-30'-05" W, a distance of 50.00 feet to a MAG nail set.

THENCE, N 14°-18'-27" W, a distance of 120.37 feet to a point referenced by a 5/8 inch iron rod set N 55°-52'-52" E, a distance of 26.57 feet.

THENCE, N 53°-55'-50" W, a distance of 271.67 feet to a point referenced by a 5/8 inch iron rod set N 51°-48'-17" E, a distance of 25.97 feet.

THENCE, N 22°-27'-36" W, a distance of 171.20 feet to a point referenced by a 5/8 inch iron rod set N 25°-10'-51" E, a distance of 33.83 feet.

THENCE, S 72°-49'-18" W, a distance of 128.92 feet to a point referenced by a 5/8 inch iron rod set N 0°-18'-08" W, a distance of 26.13 feet.

THENCE, N 73°-25'-34" W, a distance of 141.91 feet to a point referenced by a 5/8 inch iron rod set N 33°-00'-16" E, a distance of 26.06 feet.

THENCE, N 40°-33'-54" W, a distance of 223.17 feet to a point referenced by a 5/8 inch iron rod set N 56°-41'-08" E, a distance of 25.20 feet.

THENCE, N 26°-03'-50" W, a distance of 230.78 feet to a point referenced by a 5/8 inch iron rod set N 72°-52'-39" E, a distance of 25.31 feet.

THENCE, S 72°-52'-39" W, a distance of 35.33 feet to a 5/8 inch iron rod set.

THENCE, N 14°-18'-26" W, a distance of 605.00 feet to a 5/8 inch iron rod set.

THENCE, N 72°-52'-39" E, a distance of 730.00 feet to a 5/8 inch iron rod set.

THENCE, with the west lines of the Mark C. Hatmaker original 127.0 acre tract (O.R. 156, Pg. 403) and the Earl L. Wolff 20.512 acre tract (O.R. 116, Pg. 664), S 14°-18'-26" E, a distance of 530.00 feet to a 5/8 inch iron rod set.

THENCE, S 72°-52'-39" W, a distance of 530.00 feet to a 5/8 inch iron rod set.

THENCE, S 14°-18'-26" E, a distance of 75.00 feet to a 5/8 inch iron rod set.

INDEXED ON MAP
7544 ID-1

THENCE, S 72°-52'-39" W, a distance of 114.06 feet to a point referenced by a 5/8 inch iron rod set S 72°-52'-39" W, a distance of 25.31 feet.

THENCE, S 26°-03'-50" E, a distance of 216.55 feet to a point referenced by a 5/8 inch iron rod set S 56°-41'-08" W, a distance of 25.20 feet.

THENCE, S 40°-33'-54" E, a distance of 202.06 feet to a point referenced by a 5/8 inch iron rod set S 33°-00'-16" W, a distance of 26.06 feet.

THENCE, S 73°-25'-34" E, a distance of 112.00 feet to a point referenced by a 5/8 inch iron rod set S 0°-18'-08" E, a distance of 26.13 feet.

THENCE, N 72°-49'-18" E, a distance of 159.34 feet to a point referenced by a 5/8 inch iron rod set S 25°-10'-51" W, a distance of 33.83 feet.

THENCE, S 22°-27'-36" E, a distance of 202.70 feet to a point referenced by a 5/8 inch iron rod set S 51°-48'-17" W, a distance of 25.97 feet.

THENCE, S 53°-55'-50" E, a distance of 275.59 feet to a point referenced by a 5/8 inch iron rod set S 55°-52'-52" W, a distance of 26.57 feet.

THENCE, S 14°-18'-27" E, a distance of 138.21 feet to the point of beginning.

Containing 10.704 acres of which 0.960 acre is out of the 6.171 acre tract with 0.034 acre within the highway right-of-way. 9.744 acres are out of the original 103.5 acre tract.

The basis for bearings is the center-line of Ohio Route 287 being S 75°-30'-05" W, and all other bearings are from angles and distances measured in a field survey by Lee Surveying and Mapping Co., Inc. on October 22, 1996.

Description prepared by:



Jeffrey I. Lee
Jeffrey I. Lee
Professional Surveyor 6359
October 30, 1996
Survey revised November 13, 1996

L 1429

ORIGINAL STAMP IN GREEN

INDEXED ON MAP
7544 1D-2

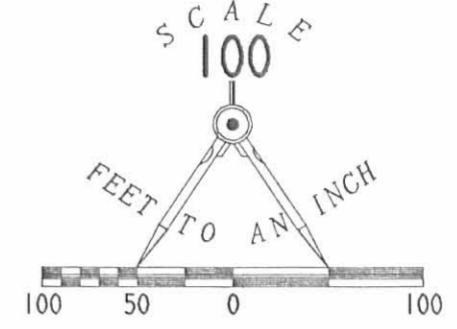
PHYLLIS J. WILBER
103.5 ACRES
O.R. 122, PG. 722

MARK C. HATMAKER
ORIG. 127.0 AC.
O.R. 156, PG. 403

10.704 ACRES

OF WHICH 0.034 ACRE IS WITHIN
THE HIGHWAY RIGHT-OF-WAY
ACREAGE BREAKDOWN

0.960 ACRE FROM THE 6.171 ACRE TRACT, O.R. 266, PG. 377
9.744 ACRES FROM THE 103.5 ACRE TRACT, O.R. 122, PG. 722



LEGEND

- 5/8" IRON ROD FOUND
- ⊗ RAILROAD SPIKE FOUND
- ⊕ 3/4" BOLT FOUND
- 5/8" IRON ROD SET
- ⊙ MAG NAIL SET

EARL L. WOLFF
20.512 AC.
O.R. 116, PG. 664

PHYLLIS J. WILBER
103.5 ACRES
O.R. 122, PG. 722

PHYLLIS J. WILBER
103.5 ACRES
O.R. 122, PG. 722

PHYLLIS J. WILBER
6.171 AC.
O.R. 266, PG. 377

PHYLLIS J. WILBER
6.171 AC.
O.R. 266, PG. 377

LINE	BEARING	DISTANCE
L 1	N 55° 52' 52" E	26.57'
L 2	N 51° 48' 17" E	25.97'
L 3	N 25° 10' 51" E	33.83'
L 4	N 00° 18' 08" W	26.13'
L 5	N 33° 00' 16" E	26.06'
L 6	N 56° 41' 08" E	25.20'
L 7	N 72° 52' 39" E	25.31'
L 8	S 72° 52' 39" W	25.31'
L 9	S 56° 41' 08" W	25.20'
L 10	S 33° 00' 16" W	26.06'
L 11	S 00° 18' 08" E	26.13'
L 12	S 25° 10' 51" W	33.83'
L 13	S 51° 48' 17" W	25.97'
L 14	S 55° 52' 52" W	26.57'

V.M.S. 3226
V.M.S. 3228

STATION 210 + 63.6
FIELD BOOK 558, PAGE 30

**SURVEY OF 10.704 ACRES OUT OF THE
PHYLLIS J. WILBER 103.5 ACRE TRACT
OFFICIAL RECORD 122, PAGE 722 AND THE
PHYLLIS J. WILBER 6.171 ACRE TRACT
OFFICIAL RECORD 266, PAGE 377
VIRGINIA MILITARY SURVEY 3226
MONROE TOWNSHIP
LOGAN COUNTY, OHIO**

2 WORKING DAYS
BEFORE YOU DIG
CALL TOLL FREE **800-362-2764**
OHIO UTILITIES PROTECTION SERVICE.

REFERENCES:
PRIOR LEE SURVEYING AND MAPPING CO., SURVEY INDEX NUMBER L 1429-4.
LOGAN COUNTY ENGINEER'S FIELD BOOK 558, PAGE 30.



SURVEYED BY:
Jeffrey I. Lee
JEFFREY I. LEE
PROFESSIONAL SURVEYOR 6359
OCTOBER 22, 1996
REVISED SURVEY NOVEMBER 13, 1996

COPYRIGHT 1996 BY:
LEE SURVEYING & MAPPING CO., INC.
117 North Madriver Street
BELLEFONTAINE, OHIO 43311
(937) 593-7335

INDEXED ON MAP
7544 IP

REC'D 12-27-96 Gary OK ✓

Lee Surveying and Mapping Co., Inc.



Farm Surveys • Lot Surveys • Topography • Subdivisions • Construction Layout

117 NORTH MADRIVER STREET
BELLEFONTAINE, OHIO 43311

(937) 593-7335
FAX (937) 593-7444

PHYLLIS J. WILBER 4.567 ACRES

Lying in Virginia Military Survey 3226, Monroe Township, Logan County, Ohio.

Being out of the Phyllis J. Wilber original 103.5 acre tract as deeded and described in Official Record 122, Page 722, and 6.171 acre tract as deeded and described in Official Record 266, Page 377 of the Logan County Records of Deeds and being more particularly described as follows:

Beginning at a 3/4 inch bolt found on the south line of Virginia Military Survey 3226 on the center-line of Ohio Route 287 (Station 210+63.6) and at the southeast corner of both of the said original 103.5 and 6.171 acre tracts.

THENCE, with the south line of Virginia Military Survey 3226 and the center-line of Ohio Route 287, S 75°-30'-05" W, a distance of 100.00 feet to a MAG nail found at the TRUE POINT OF BEGINNING.

THENCE, with the south line of Virginia Military Survey 3226 and the center-line of Ohio Route 287, S 75°-30'-05" W, a distance of 642.85 feet to a MAG nail set.

THENCE, N 14°-29'-55" W, a distance of 340.10 feet to a 5/8 inch iron rod set.

THENCE, N 75°-30'-05" E, a distance of 469.32 feet to a 5/8 inch iron rod set.

THENCE, with the lines of the Joseph D. Nelson 10.704 acre tract (O.R. 308, Pg. 263) the following three courses:

S 22°-27'-36" E, a distance of 10.00 feet to a point referenced by a 5/8 inch iron rod found N 51°-48'-17" E, a distance of 25.97 feet.

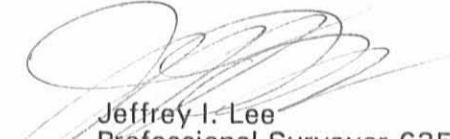
S 53°-55'-50" E, a distance of 271.67 feet to a point referenced by a 5/8 inch iron rod found N 55°-52'-52" E, a distance of 26.57 feet.

S 14°-18'-27" E, a distance of 120.37 feet to the point of beginning.

Containing 4.567 acres of which 2.219 acres are out of the 6.171 acre tract. 2.348 acres are out of the original 103.5 acre tract. 0.443 acre is within the highway right-of-way.

The basis for bearings is the center-line of Ohio Route 287 being S 75°-30'-05" W, and all other bearings are from angles and distances measured in a field survey by Lee Surveying and Mapping Co., Inc. on December 20, 1996.

Description prepared by:


Jeffrey I. Lee
Professional Surveyor 6359
December 24, 1996.



L 1429

ORIGINAL STAMP IN GREEN

INDEXED ON MAP
7544 2D-1

REC'D 12-27-96 OK GCH



Lee Surveying and Mapping Co., Inc.

Farm Surveys • Lot Surveys • Topography • Subdivisions • Construction Layout

117 NORTH MADRIVER STREET
BELLEFONTAINE, OHIO 43311

(937) 593-7335
FAX (937) 593-7444

PHYLLIS J. WILBER 17.495 ACRES

Lying in Virginia Military Survey 3226, Monroe Township, Logan County, Ohio.

Being out of the Phyllis J. Wilber original 103.5 acre tract as deeded and described in Official Record 122, Page 722, and 6.171 acre tract as deeded and described in Official Record 266, Page 377 of the Logan County Records of Deeds and being more particularly described as follows:

Beginning at a 3/4 inch bolt found on the south line of Virginia Military Survey 3226 on the center-line of Ohio Route 287 (Station 210 + 63.6) and at the southeast corner of both of the said original 103.5 and 6.171 acre tracts.

THENCE, with the south line of Virginia Military Survey 3226 and the center-line of Ohio Route 287, S 75°-30'-05" W, a distance of 742.85 feet to a MAG nail set at the TRUE POINT OF BEGINNING.

THENCE, with the south line of Virginia Military Survey 3226 and the center-line of Ohio Route 287 and the said center-line extended, S 75°-30'-05" W, a distance of 671.72 feet to a MAG nail set on the southwest corner of Virginia Military Survey 3226.

THENCE, with the west line of Virginia Military Survey 3226, N 15°-14'-04" W, a distance of 842.30 feet to a 5/8 inch iron rod set.

THENCE, N 72°-41'-00" E, a distance of 457.05 feet to a 5/8 inch iron rod set.

THENCE, N 14°-24'-18" W, a distance of 189.24 feet to a 5/8 inch iron rod set.

THENCE, N 72°-41'-00" E, a distance of 243.32 feet to a 5/8 inch iron rod set.

THENCE, with the lines of the Joseph D. Nelson 10.704 acre tract (O.R. 308, Pg. 263) the following seven courses:

S 14°-18'-26" E, a distance of 74.00 feet to a 5/8 inch iron rod found.

N 72°-52'-39" E, a distance of 35.33 feet to a point referenced by a 5/8 inch iron rod found N 72°-52'-39" E, a distance of 25.31 feet.

S 26°-03'-50" E, a distance of 230.78 feet to a point referenced by a 5/8 inch iron rod found N 56°-41'-08" E, a distance of 25.20 feet.

S 40°-33'-54" E, a distance of 223.17 feet to a point referenced by a 5/8 inch iron rod found N 33°-00'-16" E, a distance of 26.06 feet.

S 73°-25'-34" E, a distance of 141.91 feet to a point referenced by a 5/8 inch iron rod found N 0°-18'-08" W, a distance of 26.13 feet.

N 72°-49'-18" E, a distance of 128.92 feet to a point referenced by a 5/8 inch iron rod found N 25°-10'-51" E, a distance of 33.83 feet.

S 22°-27'-36" E, a distance of 161.20 feet to a 5/8 inch iron rod set.

THENCE, S 75°-30'-05" W, a distance of 469.32 feet to a 5/8 inch iron rod set.

THENCE, S 14°-29'-55" E, a distance of 340.10 feet to the point of beginning.

Containing 17.495 acres of which 0.817 acre is out of the 6.171 acre tract. 16.678 acres are out of the original 103.5 acre tract. 0.464 acre is within the highway right-of-way.

The basis for bearings is the center-line of Ohio Route 287 being S 75°-30'-05" W, and all other bearings are from angles and distances measured in a field survey by Lee Surveying and Mapping Co., Inc. on October 22, 1996.

Description prepared by:

Jeffrey I. Lee
Professional Surveyor 6359
December 20, 1996



L 1429

ORIGINAL STAMP IN GREEN

INDEXED ON MAP
7544 2D-2



Lee Surveying and Mapping Co., Inc.



Farm Surveys • Lot Surveys • Topography • Subdivisions • Construction Layout

117 NORTH MADRIVER STREET
BELLEFONTAINE, OHIO 43311

(937) 593-7335
FAX (937) 593-7444

PHYLLIS J. WILBER 8.960 ACRES

Lying in Virginia Military Survey 3226, Monroe Township, Logan County, Ohio.

Being out of the Phyllis J. Wilber original 103.5 acre tract as deeded and described in Official Record 122, Page 722, and 6.171 acre tract as deeded and described in Official Record 266, Page 377 of the Logan County Records of Deeds and being more particularly described as follows:

Beginning at a 3/4 inch bolt found on the south line of Virginia Military Survey 3226 on the center-line of Ohio Route 287 (Station 210+63.6) and at the southeast corner of both of the said original 103.5 and 6.171 acre tracts.

THENCE, with the south line of Virginia Military Survey 3226 and the center-line of Ohio Route 287, S 75°-30'-05" W, a distance of 50.00 feet to a MAG nail found.

THENCE, with the lines of the Joseph D. Nelson 10.704 acre tract (O.R. 308, Pg. 263) the following ten courses:

N 14°-18'-27" W, a distance of 138.21 feet to a point referenced by a 5/8 inch iron rod found S 55°-52'-52" W, a distance of 26.57 feet.

N 53°-55'-50" W, a distance of 275.59 feet to a point referenced by a 5/8 inch iron rod found S 51°-48'-17" W, a distance of 25.97 feet.

N 22°-27'-36" W, a distance of 202.70 feet to a point referenced by a 5/8 inch iron rod found S 25°-10'-51" W, a distance of 33.83 feet.

S 72°-49'-18" W, a distance of 159.34 feet to a point referenced by a 5/8 inch iron rod found S 0°-18'-08" E, a distance of 26.13 feet.

N 73°-25'-34" W, a distance of 112.00 feet to a point referenced by a 5/8 inch iron rod found S 33°-00'-16" W, a distance of 26.06 feet.

N 40°-33'-54" W, a distance of 202.06 feet to a point referenced by a 5/8 inch iron rod found S 56°-41'-08" W, a distance of 25.20 feet.

N 26°-03'-50" W, a distance of 216.55 feet to a point referenced by a 5/8 inch iron rod found S 72°-52'-39" W, a distance of 25.31 feet.

N 72°-52'-39" E, a distance of 114.06 feet to a 5/8 inch iron rod found.

N 14°-18'-26" W, a distance of 75.00 feet to a 5/8 inch iron rod found.

N 72°-52'-39" E, a distance of 530.00 feet to a 5/8 inch iron rod found.

THENCE, with the west line of the Earl L. Wolff 20.512 acre tract (O.R. 116, Pg. 664), S 14°-18'-26" E, a distance of 1100.33 feet to the point of beginning.

Containing 8.960 acres of which 2.317 acres are out of the 6.171 acre tract with 0.035 acre within the highway right-of-way. 6.643 acres are out of the original 103.5 acre tract.

The basis for bearings is the center-line of Ohio Route 287 being S 75°-30'-05" W, and all other bearings are from angles and distances measured in a field survey by Lee Surveying and Mapping Co., Inc. on December 20, 1996.

Description prepared by:

Jeffrey I. Lee
Professional Surveyor 6359
December 24, 1996



L 1429

ORIGINAL STAMP IN GREEN

INDEXED ON MAP
7544 2D-3

REC'D 1-2-97 SWJ OK ✓



Lee Surveying and Mapping Co., Inc.



Farm Surveys • Lot Surveys • Topography • Subdivisions • Construction Layout

117 NORTH MADRIVER STREET
BELLEFONTAINE, OHIO 43311

(937) 593-7335
FAX (937) 593-7444

PHYLLIS J. WILBER 20 FEET WIDE INGRESS-EGRESS EASEMENT TO THE 17.495 ACRE TRACT

Lying in Virginia Military Survey 3225, Monroe Township, Logan County, Ohio.

Being a 20.00 feet wide ingress/egress easement over the Phyllis J. Wilber original 103.5 acre tract as dedeed and described in Official Record 122, Page 722 of the Logan County Records of Deeds and the center-line being more particularly described as follows:

Beginning at a MAG nail set on the southeast corner of Virginia Military Survey 3225 on the center-line of Ohio Route 287 extended.

THENCE, with the south line of Virginia Military Survey 3225 and the center-line of Ohio Route 287 extended, S 75°-30'-05" W, a distance of 58.94 feet to a 5/8 inch iron rod set at an angle point in Ohio Route 287.

THENCE, with the center-line of Ohio Route 287 extended, N 63°-56'-47" W, a distance of 23.48 feet to a 5/8 inch iron rod set at the TRUE POINT OF BEGINNING.

THENCE, with the center of an existing driveway, N 7°-17'-57" E, a distance of 83.80 feet to a 5/8 inch iron rod set.

THENCE, N 32°-02'-47" E, a distance of 60.79 feet to a 5/8 inch iron rod set on the east line of Virginia Military Survey 3225, the west line of the 17.495 acre tract and the terminus of this easement.

The basis for bearings is the center-line of Ohio Route 287 being S 75°-30'-05" W, and all other bearings are from angles and distances measured in a field survey by Lee Surveying and Mapping Co., Inc. on October 22, 1996.

Description prepared by:

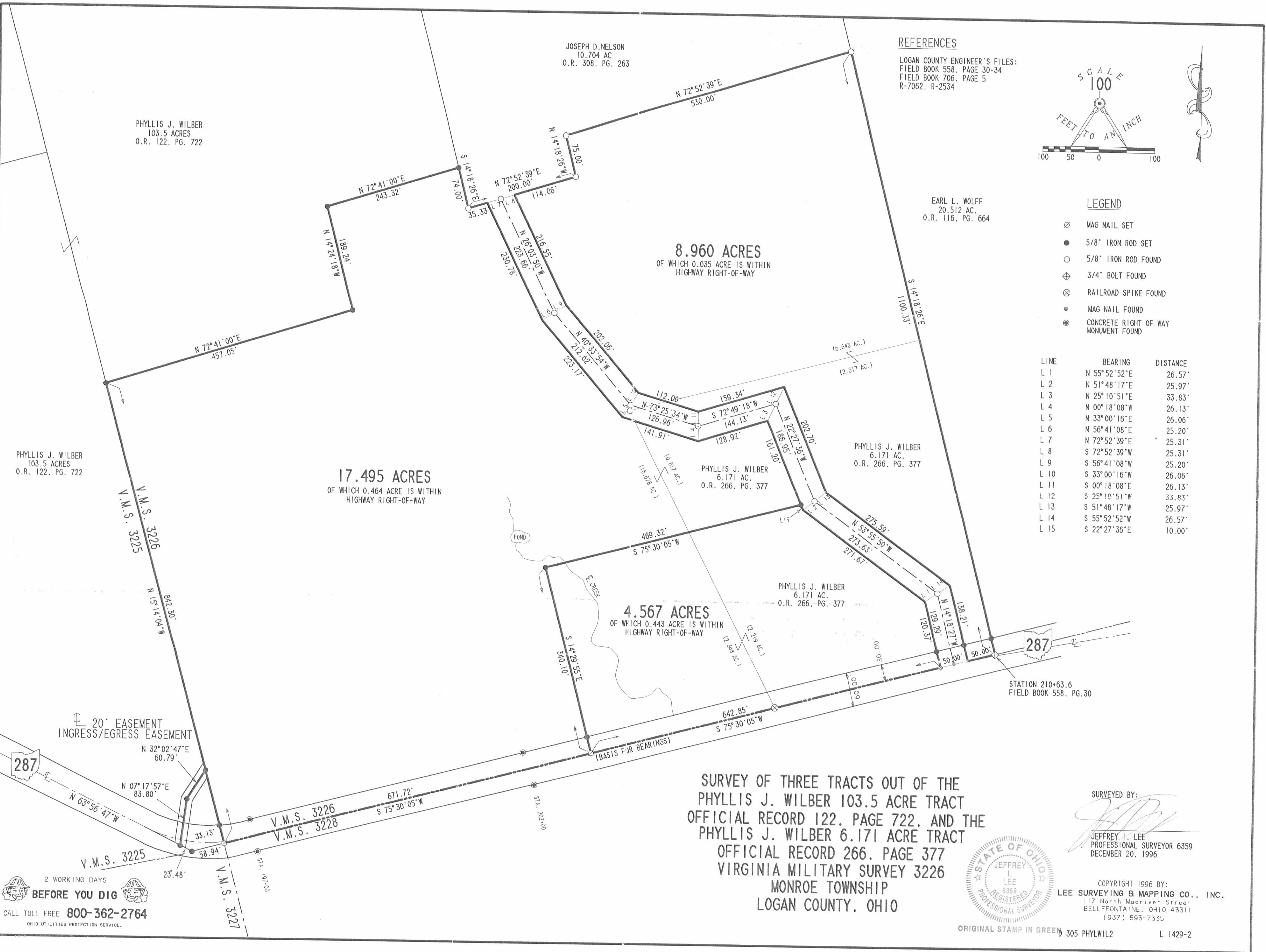
Jeffrey I. Lee
Professional Surveyor 6359
December 20, 1996



L 1429

ORIGINAL STAMP IN GREEN

INDEXED ON MAP
7544 2D-4

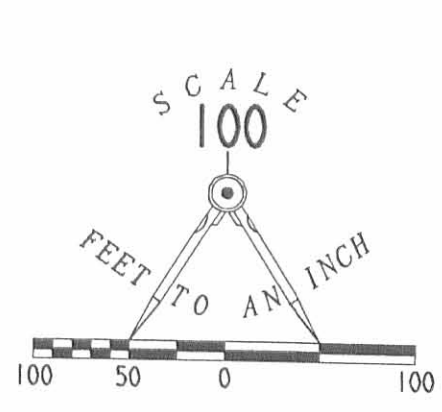


JOSEPH D. NELSON
10.704 AC
O.R. 308, PG. 263

PHYLLIS J. WILBER
103.5 ACRES
O.R. 122, PG. 722

REFERENCES

LOGAN COUNTY ENGINEER'S FILES:
FIELD BOOK 558, PAGE 30-34
FIELD BOOK 706, PAGE 5
R-7062, R-2534



EARL L. WOLFF
20.512 AC.
O.R. 116, PG. 664

LEGEND

- ⊙ MAG NAIL SET
- 5/8" IRON ROD SET
- 5/8" IRON ROD FOUND
- ⊕ 3/4" BOLT FOUND
- ⊗ RAILROAD SPIKE FOUND
- ⊙ MAG NAIL FOUND
- ⊙ CONCRETE RIGHT OF WAY MONUMENT FOUND

8.960 ACRES
OF WHICH 0.035 ACRE IS WITHIN
HIGHWAY RIGHT-OF-WAY

17.495 ACRES
OF WHICH 0.464 ACRE IS WITHIN
HIGHWAY RIGHT-OF-WAY

4.567 ACRES
OF WHICH 0.443 ACRE IS WITHIN
HIGHWAY RIGHT-OF-WAY

LINE	BEARING	DISTANCE
L 1	N 55° 52' 52" E	26.57'
L 2	N 51° 48' 17" E	25.97'
L 3	N 25° 10' 51" E	33.83'
L 4	N 00° 18' 08" W	26.13'
L 5	N 33° 00' 16" E	26.06'
L 6	N 56° 41' 08" E	25.20'
L 7	N 72° 52' 39" E	25.31'
L 8	S 72° 52' 39" W	25.31'
L 9	S 56° 41' 08" W	25.20'
L 10	S 33° 00' 16" W	26.06'
L 11	S 00° 18' 08" E	26.13'
L 12	S 25° 10' 51" W	33.83'
L 13	S 51° 48' 17" W	25.97'
L 14	S 55° 52' 52" W	26.57'
L 15	S 22° 27' 36" E	10.00'

**SURVEY OF THREE TRACTS OUT OF THE
PHYLLIS J. WILBER 103.5 ACRE TRACT
OFFICIAL RECORD 122, PAGE 722, AND THE
PHYLLIS J. WILBER 6.171 ACRE TRACT
OFFICIAL RECORD 266, PAGE 377
VIRGINIA MILITARY SURVEY 3226
MONROE TOWNSHIP
LOGAN COUNTY, OHIO**

SURVEYED BY:
Jeffrey I. Lee
JEFFREY I. LEE
PROFESSIONAL SURVEYOR 6359
DECEMBER 20, 1996



COPYRIGHT 1996 BY:
LEE SURVEYING & MAPPING CO., INC.
117 North Madriver Street
BELLEFONTAINE, OHIO 43311
(937) 593-7335

20' EASEMENT
INGRESS/EGRESS EASEMENT

2 WORKING DAYS
BEFORE YOU DIG
CALL TOLL FREE **800-362-2764**
OHIO UTILITIES PROTECTION SERVICE.

ORIGINAL STAMP IN GREEN 305 PHYLW12 L 1429-2

INDEXED ON MAP
7544 28

Lee Surveying and Mapping Co.



Farm Surveys • Lot Surveys • Topography • Subdivisions • Construction Layout

855 EAST SANDUSKY AVENUE
BELLEFONTAINE, OHIO 43311

(513) 593-5780

CLAYTON M. LEE, P.S.
JEFFREY I. LEE, P.S.

HAVENS (20.512 ACRES)

Lying in V.M.S. 3226 and V.M.S. 3228, Monroe Township, Logan County, Ohio.

Being out of that 127 acres in the name of Havens and Kaffenbarger as deeded and described in Volume ~~374~~, Page ~~606~~ of the Logan County Records of Deeds and being more particularly described as follows:

Beginning at 3/4" iron rod found on the center-line of State Route 287, on the grantor's west line, on the line between V.M.S. 3226 and V.M.S. 3228 and being Station 210+63.6 of the county highway survey (Field Book 558, Page 30).

THENCE, with the grantor's west line, N 14°-31'-10" W, a distance of 1449.24 feet to a 5/8" iron rod, passing a 5/8" iron rod at 30.10 feet.

THENCE, N 79°-55'-25" E, a distance of 715.70 feet to a 5/8" iron rod.

THENCE, S 13°-37'-50" E, a distance of 387.84 feet to a 5/8" iron rod.

THENCE, S 8°-11'-55" E, a distance of 512.06 feet to a 5/8" iron rod.

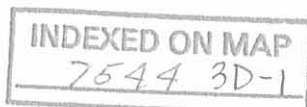
THENCE, S 17°-53'-10" W, a distance of 619.87 feet to a railroad spike set on the center-line of State Route 287, passing a 5/8" iron rod set at 585.98 feet.

THENCE, with said center-line, S 80°-10' W, a distance of 322.30 feet to the point of beginning.

Containing 20.512 acres of which 20.406 acres are in V.M.S. 3226 and 0.016 acre is in V.M.S. 3228.

Clayton M. Lee
Clayton M. Lee
Registered Professional Surveyor, No. 6181
July 3, 1986

This description prepared from an actual field survey.



Received-7-7-86 OK / C.R. 1

Lee Surveying and Mapping Co.



Farm Surveys • Lot Surveys • Topography • Subdivisions • Construction Layout

855 EAST SANDUSKY AVENUE
BELLEFONTAINE, OHIO 43311

(513) 593-5780

CLAYTON M. LEE, P.S.
JEFFREY I. LEE, P.S.

HAVENS (6.589 ACRES)

Lying in V.M.S. 3226 and V.M.S. 3228, Monroe Township, Logan County, Ohio.

Being out of that 127 acres in the name of Havens and Kaffenbarger as deeded and described in Volume ~~374~~, Page ~~606~~ of the Logan County Records of deeds and being more particularly described as follows:

Beginning at a railroad spike set on the center-line of State Route 287, a distance of 322.30 feet easterly, along said center-line from the west line of grantor's land at County Engineer's Station 210+63.6 (See Field Book 588, Page 30).

THENCE, N 17°-53'-10" E, a distance of 619.87 feet to a 5/8" iron rod, passing a 5/8" iron rod set at 33.89 feet.

THENCE, S 84°-28'-45" E, a distance of 415.36 feet to a 5/8" iron rod.

THENCE, S 15°-50'-35" E, a distance of 441.18 feet to a railroad spike set on the center-line of State Route 287, passing a 5/8" iron rod set at 411.01 feet.

THENCE, with said center-line, a distance of 735.05 feet to the point of beginning.

Containing 6.589 acres of which 5.619 acres are in V.M.S. 3226 and 0.970 acre is in V.M.S. 3228.

Prepared by:

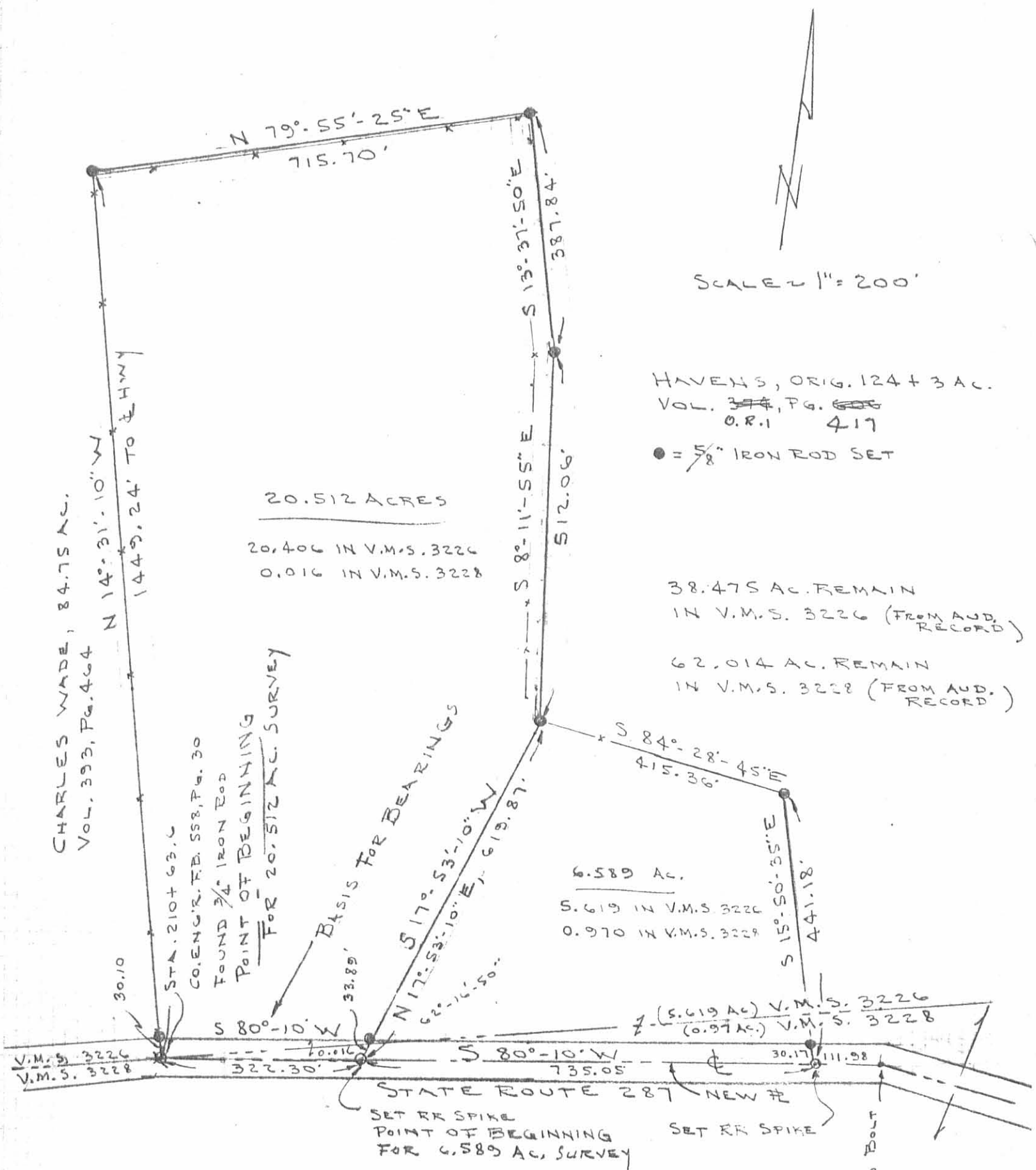
Clayton M. Lee
Registered Professional Surveyor No. 6181
July 3, 1986

This description prepared from an actual field survey.



ORIGINAL STAMP IN GREEN

INDEXED ON MAP
7544 3D-2



SCALE 1" = 200'

HAVENS, ORIG. 124 + 3 AC.
 VOL. ~~374~~, PG. ~~606~~
 O.R. 1 417

● = 5/8" IRON ROD SET

20.512 ACRES
 20.406 IN V.M.S. 3226
 0.016 IN V.M.S. 3228

38.475 AC. REMAIN
 IN V.M.S. 3226 (FROM AUD. RECORD)
 62.014 AC. REMAIN
 IN V.M.S. 3228 (FROM AUD. RECORD)

6.589 AC.
 5.619 IN V.M.S. 3226
 0.970 IN V.M.S. 3228

SURVEY OF 2 TRACTS OUT OF THE
 HAVENS - KAFFENBARGER 124 + 3 ACRES
 (DEED VOL. ~~374~~, PG. ~~606~~)
 O.R. 1 417
 V.M.S. 3226 & 3228
 MONROE TWP., LOGAN CO., OHIO



By: *Jeffrey I. Lee*
 JEFFREY I. LEE
 REG. PROF. SURVEYOR 6359
 JULY 1, 1986

INDEXED ON MAP
 7544 3P

Received 2-12-91

OK 2-13-91



Lee Surveying and Mapping Co.



Farm Surveys • Lot Surveys • Topography • Subdivisions • Construction Layout

143 EAST COLUMBUS AVENUE
BELLEFONTAINE, OHIO 43311

(513) 593-7335

JEFFREY I. LEE, P.S.

MADRIVER THEATER 6.171 ACRES

Lying in V.M.S. 3226, Monroe Township, Logan County, Ohio.

Being out of the Mary Ellen Basic 113.5 acre tract as deeded and described in Volume 409, Page 30 of the Logan County Records of Deeds and subject to a Land Contract to Phyllis Wilber recorded in Official Record 34, Page 853 and being more particularly described as follows:

Beginning at a 3/4 inch bolt found in the center-line of State Route 287 at the southeast corner of the said 113.5 acre tract.

THENCE, with the center-line of State Route 287, S 75°-30'-05" W, a distance of 405.00 feet to a railroad spike set.

THENCE, N 26°-47'-00" W, a distance of 588.47 feet to a 5/8 inch iron rod set.

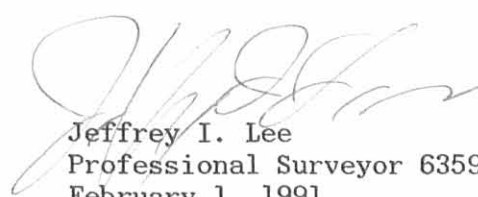
THENCE, N 75°-30'-05" E, a distance of 530.00 feet to a 5/8 inch iron rod set on the west line of the Earl Wolff 20.512 acre tract (O.R. 116, Page 664).

THENCE, with the west line of the said 20.512 acre tract, S 14°-31'-10" E, a distance of 575.00 feet to the point of beginning.

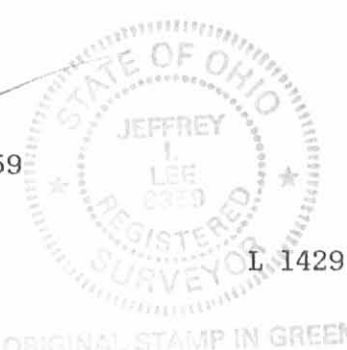
Containing 6.171 acres of which 0.281 acre is within the right-of-way of State Route 287.

The basis for bearings is based upon the center-line of State Route 287 frontage for the aforesaid 20.512 acre tract being S 80°-10'-00" W, and all other bearings are from angles and distances measured in a field survey by Lee Surveying and Mapping Company on January 30, 1991.

Description prepared by:


Jeffrey I. Lee
Professional Surveyor 6359
February 1, 1991

REVISED FEBRUARY 11, 1991



INDEXED ON MAP
7544 4D

MARY ELLEN BUSIC
 113.5 AC.
 VOL. 409, PG. 30
 LAND CONTRACT
 PHYLLIS WILBER
 O.R. 34, PG. 853

N 75° 30' 05" E
 530.00'

EARL WOLFF
 20.512 AC.
 O.R. 116, PG. 664



6.171 ACRES

0.281 ACRE IN THE
 ROAD RIGHT-OF-WAY

N 26° 47' 00" W
 588.47'

S 14° 31' 10" E
 575.00'

S 80° 10' 00" W

405.00'
 S 75° 30' 05" W

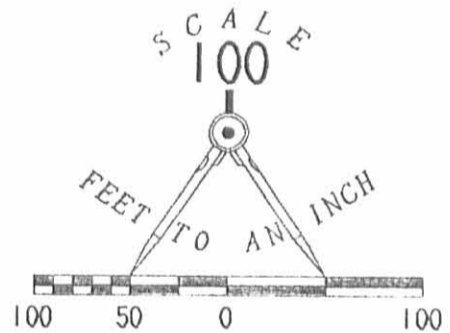
V.M.S. 3226
 V.M.S. 3228

287

REFERENCE:

O.D.O.T. RIGHT-OF-WAY PLANS
 FOR STATE ROUTE 287

LOGAN COUNTY ENGINEER'S
 FIELD BOOK 558, PP. 30-33



LEGEND

- 3/4" BOLT FOUND
- ⊙ RAILROAD SPIKE SET
- 5/8" I. ROD FOUND
- 5/8" I. ROD SET

SURVEY OF 6.171 ACRES OUT OF THE
 MARY ELLEN WADE BUSIC 113.5 ACRE TRACT
 VOLUME 409, PAGE 30
 NOTE: LAND CONTRACT O.R. 34, PG. 853
 V.M.S. 3226
 MONROE TOWNSHIP
 LOGAN COUNTY, OHIO

SURVEYED BY:



Jeffrey I. Lee
 JEFFREY I. LEE
 PROFESSIONAL SURVEYOR 6359
 JANUARY 30, 1991
 REVISED FEBRUARY 11, 1991

LEE SURVEYING & MAPPING CO.
 143 East Columbus Avenue
 BELLEFONTAINE, OHIO 43311
 (513) 593-7335

ORIGINAL STAMP IN GREEN

INDEXED ON MAP 429-4
 7544 4P

8-27-19

APPROVED



EDWARDS SURVEYING

110 South Main Street
Urbana, Ohio 43078
(937) 653-6508



LEGAL DESCRIPTION FOR HATMAKER'S 1.173 ACRE TRACT

Being situate in the State of Ohio, County of Logan, Township of Monroe, and being a part of Virginia Military Surveys 3226 and 3228, and being more particularly described as follows:

Beginning for reference at a 3/8" diameter iron bar found on the centerline of State Route 287 (60' right-of-way) at centerline Station 210+63.6 per the Logan County Engineer's Field Book 558, Page 30;

thence with the centerline of State Route 287, N-78°44'53"-E, 901.77'(feet) to a Mag Nail set at the **PRINCIPLE PLACE OF BEGINNING** for the tract hereinafter described, passing for reference a Railroad Spike found at the Southeast corner of a 5.401 acre tract conveyed to Earl L. Wolff by deed recorded in Official Record 132, Page 285, at 322.30'(feet);

thence N-6°39'15"-W, 460.09'(feet) to an iron bar set on a South line of an 88.844 acre tract conveyed to Mark C. & Lidian K. Hatmaker by deed recorded in Official Record 156, Page 403, passing for reference an iron bar set on the right-of-way line of State Route 287 at 30.10'(feet);

thence with the bounds of the 88.844 acre tract the following two (2) courses:

1. S-85°52'59"-E, 75.00'(feet) to a 5/8" diameter iron bar found;
2. S-17°17'14"-E, 441.18'(feet) to a Railroad Spike found on a centerline tangent of aforementioned State Route 287, passing for reference a 5/8" diameter iron bar found on the right-of-way line of State Route 287 at 411.03'(feet);

thence with the centerline tangent of State Route 287 and the centerline of State Route 287, S-78°44'53"-W, 155.58'(feet) to the place of beginning.

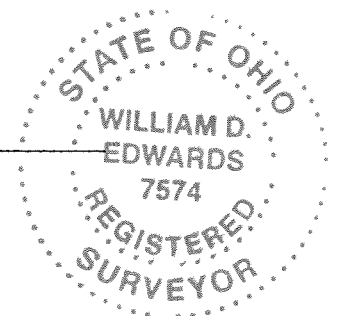
Containing 1.173 acres, 0.105 acre of which is within the Road right-of-way, 0.253 acre of which is a part of V.M.S. 3228, and 0.920 acre of which is a part of V.M.S. 3226, but being subject to the rights of all legal highways and all easements of record.

Being a part of a 6.589 acre tract conveyed to Mark & Lidian K. Hatmaker by deed recorded in Official Record 87, Page 696, of the Logan County Records.

The foregoing description prepared by and in accordance with a survey by William D. Edwards, Professional Surveyor No. 7574, August 22, 2019. All iron bars set are 5/8"x30" iron re-bar with a yellow plastic cap stamped "EDWARDS PS 7574". Bearings are based on the centerline of State Route 287 per an assumed bearing of N-78°44'53"-E.

William D. Edwards, P.S. 7574

INDEXED ON MAP
7544



8-27-19
 **APPROVED**


PLAT OF SURVEY

MONROE TOWNSHIP, LOGAN COUNTY, OHIO
 VIRGINIA MILITARY SURVEYS 3226 & 3228

NOTE:

1. BEARINGS ARE BASED ON THE CENTERLINE OF STATE ROUTE 287 PER AN ASSUMED BEARING OF N-78°44'53"-E.
2. REFERENCES USED: DEED OF SUBJECT PREMISES; DEEDS OF ADJOINING PARCELS, COUNTY TAX MAPS, PLATS OF SURVEYS IN THE VICINITY, RIGHT-OF-WAY PLANS FOR STATE ROUTE 287, COUNTY ENGINEER F.B. 558, P. 30.



SCALE: 1" = 100'

 DATE: AUGUST 22, 2019

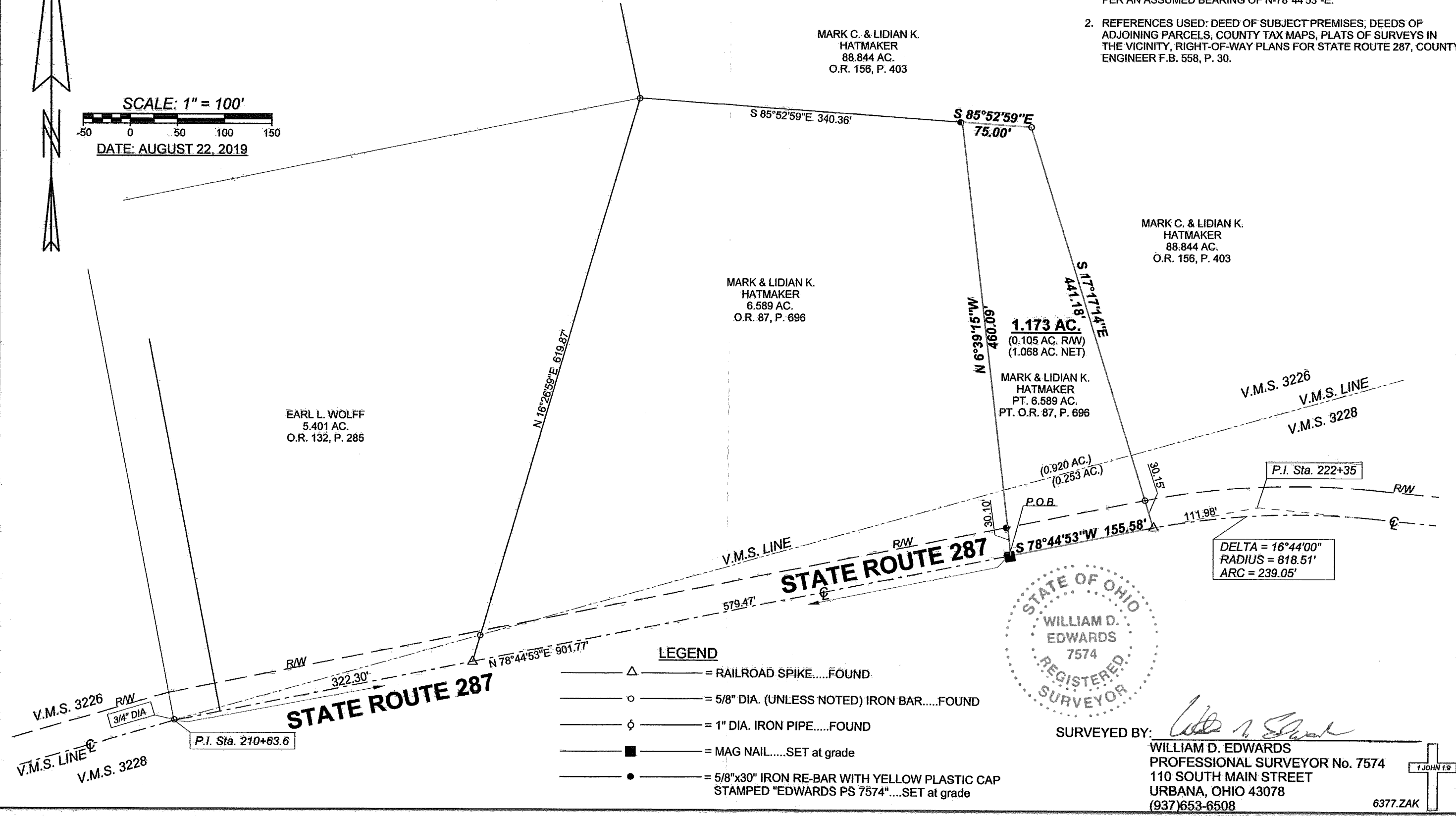
MARK C. & LIDIAN K.
 HATMAKER
 88.844 AC.
 O.R. 156, P. 403

MARK C. & LIDIAN K.
 HATMAKER
 88.844 AC.
 O.R. 156, P. 403

MARK & LIDIAN K.
 HATMAKER
 6.589 AC.
 O.R. 87, P. 696

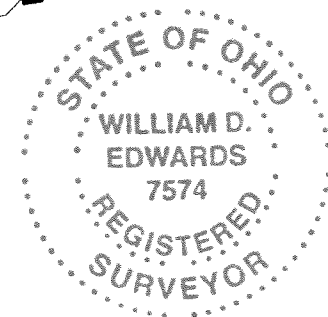
MARK & LIDIAN K.
 HATMAKER
 PT. 6.589 AC.
 PT. O.R. 87, P. 696

EARL L. WOLFF
 5.401 AC.
 O.R. 132, P. 285



LEGEND

- Δ — = RAILROAD SPIKE.....FOUND.
- ○ — = 5/8" DIA. (UNLESS NOTED) IRON BAR.....FOUND
- ◊ — = 1" DIA. IRON PIPE.....FOUND
- ■ — = MAG NAIL.....SET at grade
- ● — = 5/8"x30" IRON RE-BAR WITH YELLOW PLASTIC CAP STAMPED "EDWARDS PS 7574".....SET at grade



SURVEYED BY:

William D. Edwards
 WILLIAM D. EDWARDS
 PROFESSIONAL SURVEYOR No. 7574
 110 SOUTH MAIN STREET
 URBANA, OHIO 43078
 (937)653-6508

INDEXED ON MAP
 7544

6377.ZAK

9-15-2021

APPROVED



EDWARDS SURVEYING

110 South Main Street
Urbana, Ohio 43078
(937) 653-6508



LEGAL DESCRIPTION FOR HATMAKER'S 0.717 ACRE TRACT

Being situate in the State of Ohio, County of Logan, Township of Monroe, and being a part of Virginia Military Surveys 3226 and 3228, and being more particularly described as follows:

Beginning for reference at a 3/4" diameter iron bar found on the centerline of State Route 287 (60' right-of-way) at centerline Station 210+63.6 per the Logan County Engineer's Field Book 558, Page 30;

thence with the centerline of State Route 287, N-78°44'53"-E, 765.53'(feet) to a Mag Nail set at the **PRINCIPLE PLACE OF BEGINNING** for the tract hereinafter described, passing for reference a Railroad Spike found at the Southeast corner of a 5.401 acre tract conveyed to Earl L. Wolff by deed recorded in Official Record 132, Page 285, at 322.30'(feet);

thence N-9°25'44"-E, 490.20'(feet) to a 5/8" diameter iron bar found on a South line of an 88.844 acre tract conveyed to Mark C. & Lidian K. Hatmaker by deed recorded in Official Record 156, Page 403, and at the Northwest corner of a 1.173 acre tract conveyed to Derick Thomas Hatmaker by deed recorded in Official Record 1356, Page 793, passing for reference an iron bar set on the right-of-way line of State Route 287 at 32.07'(feet);

thence with the West line of the 1.173 acre tract, S-6°39'15"-E, 460.09'(feet) to a Mag Nail found on the centerline of aforementioned State Route 287, passing for reference a 5/8" diameter iron bar found on the right-of-way line of State Route 287 at 429.99'(feet);

thence with the centerline of State Route 287, S-78°44'53"-W, 136.24'(feet) to the place of beginning.

Containing 0.717 acre, 0.091 acre of which is within the Road right-of-way, 0.187 acre of which is a part of V.M.S. 3228, and 0.530 acre of which is a part of V.M.S. 3226, but being subject to the rights of all legal highways and all easements of record.

Being a part of a 6.589 acre tract conveyed to Mark & Lidian K. Hatmaker by deed recorded in Official Record 87, Page 696, of the Logan County Records.

The herein described tract is to be attached to an adjoining parcel and is not to be used as a separate and independent tract.

The foregoing description prepared by and in accordance with a survey by William D. Edwards, Professional Surveyor No. 7574, September 13, 2021. All iron bars set are 5/8"x30" iron re-bar with a yellow plastic cap stamped "EDWARDS PS 7574". Bearings are based on the centerline of State Route 287 per an assumed bearing of N-78°44'53"-E.





William D. Edwards, P.S. 7574

INDEXED ON MAP
7544

9-15-2021

APPROVED

PLAT OF SURVEY

MONROE TOWNSHIP, LOGAN COUNTY, OHIO

VIRGINIA MILITARY SURVEYS 3226 & 3228

NOTE:

1. BEARINGS ARE BASED ON THE CENTERLINE OF STATE ROUTE 287 PER AN ASSUMED BEARING OF N-78°44'53"-E.
2. REFERENCES USED: DEED OF SUBJECT PREMISES, DEEDS OF ADJOINING PARCELS, COUNTY TAX MAPS, PLATS OF SURVEYS IN THE VICINITY, RIGHT-OF-WAY PLANS FOR STATE ROUTE 287, COUNTY ENGINEER F.B. 558, P. 30.
3. THE 0.717 ACRE TRACT SHOWN HEREON IS TO BE ATTACHED TO AN ADJOINING PARCEL.

MARK C. & LIDIAN K.
HATMAKER
88.844 AC.
O.R. 156, P. 403

MARK C. & LIDIAN K.
HATMAKER
88.844 AC.
O.R. 156, P. 403

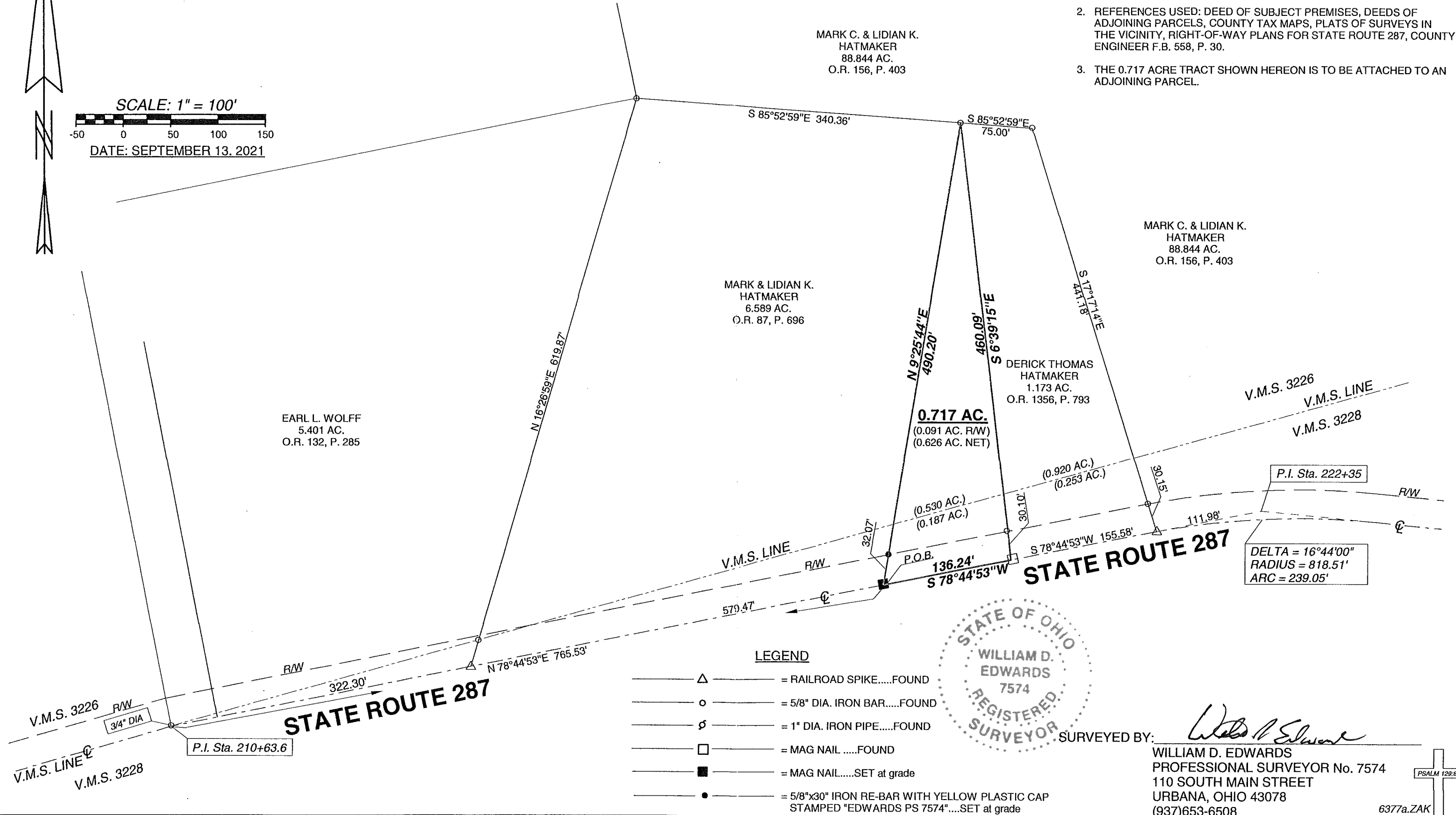
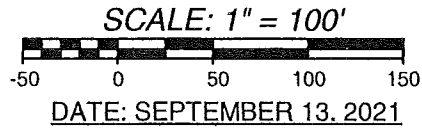
MARK & LIDIAN K.
HATMAKER
6.589 AC.
O.R. 87, P. 696

DERICK THOMAS
HATMAKER
1.173 AC.
O.R. 1356, P. 793

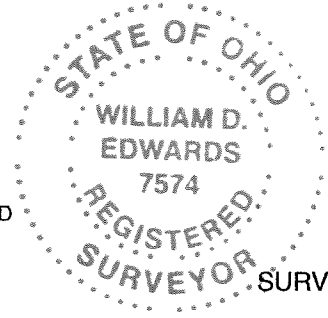
EARL L. WOLFF
5.401 AC.
O.R. 132, P. 285

0.717 AC.
(0.091 AC. R/W)
(0.626 AC. NET)

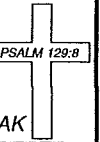
P.I. Sta. 222+35
DELTA = 16°44'00"
RADIUS = 818.51'
ARC = 239.05'



- LEGEND**
- Δ — = RAILROAD SPIKE.....FOUND
 - ○ — = 5/8" DIA. IRON BAR.....FOUND
 - ∅ — = 1" DIA. IRON PIPE.....FOUND
 - □ — = MAG NAILFOUND
 - ■ — = MAG NAIL.....SET at grade
 - ● — = 5/8"x30" IRON RE-BAR WITH YELLOW PLASTIC CAP STAMPED "EDWARDS PS 7574".....SET at grade



SURVEYED BY: *William D. Edwards*
WILLIAM D. EDWARDS
PROFESSIONAL SURVEYOR No. 7574
110 SOUTH MAIN STREET
URBANA, OHIO 43078
(937)653-6508



6377a.ZAK

INDEXED ON MAP
7544