

stone on the north side of a small creek thence $S 28^{\circ} E$ 20 poles to a
 stone thence $S 12^{\circ} W$ 25 poles to the beginning containing 30 1/2 acres
 part of Jesse Davis survey c r 4492 on the waters of Mad River

John McNeal
 William McNeal } G.L.

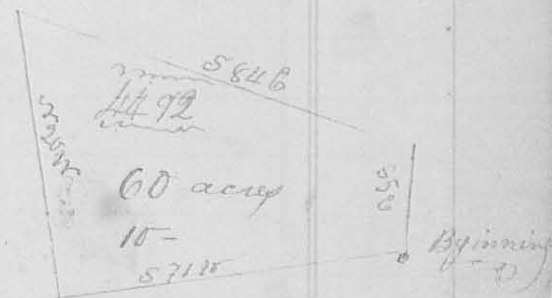
James McHarmon
 Surveyor of Logan County

March 8 1823

(3161)

Survey c r 10

Surveyed for Samuel Scott Beginning at
 a stone where a large rock bears $N 10^{\circ} E$ 33 links distant, in the
 South line of Williams & McNeal's land: thence with said line
 and course there of $S 10^{\circ} W$ allowing $1/2^{\circ}$ variation eastward from said
 line, thence the present bearing is $S 7 1/2^{\circ} W$ 129 poles to 3 white
 oaks (2 of which I saw the original corner to said McNeal's
 land thence $S 20^{\circ} W$ 156 poles to 3 small
 hickories in the westerly line of McNeal's
 land thence $S 81^{\circ} E$ 154 poles to a stone
 in a barn: thence $S 5^{\circ} E$ 37 poles
 to the beginning containing sixty
 acres part of Jesse Davis survey c r 4492



John McNeal
 William McNeal } G.L.

James McHarmon Surveyor G.L.

March 10th & 11th 1823

Survey c r 11

(3162)

Surveyed and divided sections 17 and 22
 in Town No 5 Range r 13 E. M. R.
 for Peter and John Kelly as under spe-
 cified. Beginning at a black oak 16 inches
 in diameter $S 27 1/2^{\circ} W$ 50 links dist a white
 oak 10 inches in diam. $S 45^{\circ} W$ 18 links
 dist thence south between sees 22 & 29
 320 poles to the corner of sees 22, 23, 28 & 29 a white oak 18 inches in diam
 $N 34^{\circ} W$ 150 links dist. thence east between sees 22, 22 & 23 (passing the
 corner of sees of 16, 17, 22 & 23 at 318 poles) continued between sees 16 & 17
 344 poles in the whetlines to the corner of sees 16 & 17 in Sudlow's
 line a black oak 16 inches in diam. $S 7 1/2^{\circ} W$ 119 links dist. thence
 with Sudlow's line $S 20^{\circ} W$ $1/2^{\circ}$ westerly variation to the c. r. c. corner



corner of sec. 23 & 24 white oak 24 inches in diam. or 82 W 28 links
 dist. thence west between sec. 23 & 24 232 poles to the beginning
 containing 587 3/4 acres - The division line begins at a white
 oak white oak 15 inches in diam. west 11 links a white oak 18 inches
 in diam. S 73 E 21 links dist. in the north line of sec 23 26 poles from
 the N.E. corner thereof thence W 12 1/2 E 116 poles to a white oak thence
 S 24 E 58 poles to a stone in a prairie thence south 58 poles to near the
 bank of Maid River thence S 12 1/2 E 88 poles to the south line of said
 sec. a black oak 12 inches in diam. S 76 E 23 links dist. - The part
 on the west side of the division line contains 347 3/4 acres - the other
 240 acres of

James Williamson Surveyor L.C.

8163

April 3rd 1826

Survey No 19

Surveyed and divided sec. 23 in Range 14 Co. M. N.
 for William Davis and Robert Campbell beginning at the
 N.W. corner of Sec 23 original corner to sec. 22, 23, 28 & 29 a white oak
 14 inches in diam. W 76 E 22 links dist. a white oak 14 inches in diam.
 W 35 N 17 links dist. thence east between sec. 22 & 23 with the original
 line 16 1/2 poles to the quarter sec. corner
 a white oak 10 inches in diam. or 38 E
 24 links dist. continued with said
 line 16 1/2 poles further to the S.E. corner
 of said sec. & corner to sec. 16, 17, 22, & 23,
 a white oak corner tree thence north
 between sec. 17 & 23 162 poles, passed a ^{10 inches diam.} ~~Pyram~~
 Hickory the original quarter section
 corner between sec. 17 & 23 324 poles to the corner of sec. 17, 18, 23 & 24
 a white oak 24 inches in diam. S 18 W 32 links dist. a white oak
 14 inches in diam. W 63 E 13 links dist. thence west between
 sec. 23 & 24, passed the quarter sec. corner between sec. 23 & 24 at
 16 1/2 poles a white oak 16 inches in diam. S 73 E 36 links dist. a white
 oak 14 inches in diam. S 76 W 17 links dist. 326 poles to the corner
 of sec. 23, 24, 29 & 30 a white oak 14 inches in diam. S 76 E 22 links
 dist. a white oak 14 inches in diam. S 35 W 17 links dist. return
 to the last named or sec. corner thence south 16 1/2 poles and struck up
 a stake in a wet prairie & continued 162 poles further to the first

