

of the sec 80 poles, from the N.W. corner then of
 The 3rd line begins at the gr. sec. corner in the west
 line of the sec. Thence S 9 1/2 E 340 poles (passing the centre
 corner) to a small white oak in the centre of the east
 line - The 4th line begins at a stone 80 poles west
 of the last named corner; Thence N 1 E 172 poles to a stone
 a hickory S 25 W 26 L. in the north line 80 poles west of
 the N.E. corner of the sec. The number of acres and the
 owners names are marked on each division of
 the plat

Sam. Moore }
 David Piatt } C.C.

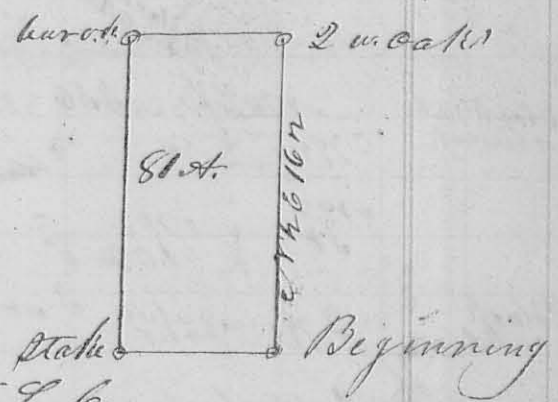
La Mettarron
 Co, S, L, C.

Robert Clark 9th mo. (Sept. 29th 1832)

Survey # 195

Surveyed the east half of the N.E. qr of sec. 24 T4 R13
 M. for Robert Clark. - beginning at the gr. sec. cor-
 -ner between sec 18 & 24 a stone in a prairie from which
 a red oak bears N 20 E 150 L. an original bearing tree
 thence between sec 18 & 24 N 1/2 E 162 poles to the
 N.E. corner of said sec. a white oak S 5 W 17 L
 a white oak N 10 1/2 E 34 L - Thence N 89 1/2 W with
 the original line 80 poles to a stone, a bar oak
 S 70 E 68 L - Thence S 1/2 W

162 poles to a stake in a
 prairie thence S 89 1/2 E
 80 poles to the beginning,
 containing 8 acres



Layton Pollock }
 John Wren } C.C.

La Mettarron Co, S, L, C.

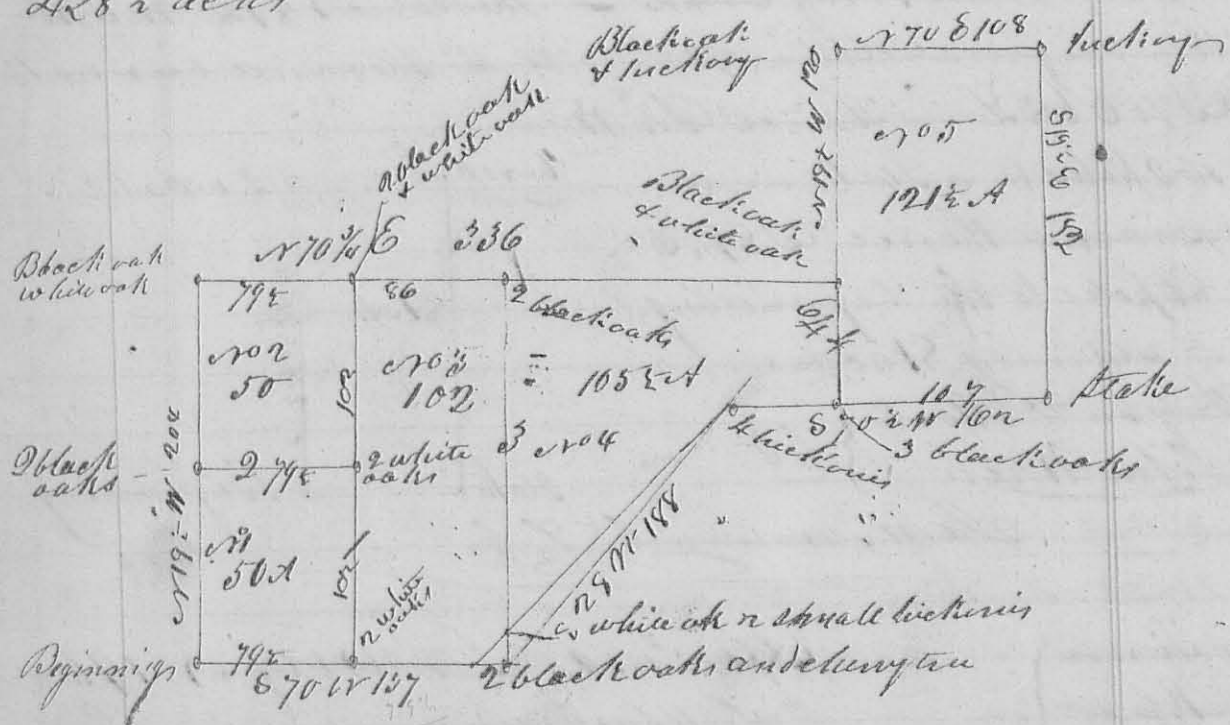
Luke Simon }
 by J. W. Farmer }

10 mo. 8th 1832 Survey # 196

resurveyed and divided Jacob
 Walker's survey of 1816 for Luke Simon
 at the request of his atty John W. Farmer
 Beginning at a white a dead black oak in Lad.
 Cow's line N.W. corner of Thomas Worthington's survey

158
 1587
 Leake & Siemen Survey 4479 and at the 30 mile tree on said line - thence with Ludlow's line N 19 1/2 W 204 poles to a black oak & white oak, (formerly 2 black oaks)

N.W. corner to Zabolli, Walker's said Survey & C.M. corner to Samuel Finley's Survey 4493 & 4525 thence with the South line of Finley's survey N 75 1/2 E 336 poles to a black oak & white oak (S.E. corner to Finley's road at 164 & at 270 poles) - thence N 19 1/2 W crossed the road at 76 poles, 120 poles to a black oak and hickory, in the east line of Finley's Survey, thence N 70 1/2 E 108 poles to a hickory, found it 4 poles east, the other hickory is down - thence N 19 1/2 E 182 poles (crossed a branch at 105 poles) to a stake in the north line of Thomas Worthington's Survey, 4479 thence N 70 1/2 W 107 poles (passed 2 black oaks (a corner) at 102 poles crossed a road at 162 poles to to where formerly stood the hickory, northwesterly corner to Worthington's Survey, thence N 28 W 158 poles to a black oak, hickory and cherry tree another corner to Worthington thence N 70 W 107 poles to the beginning containing 228 1/2 acres



The 1st division line begins at 2 white oaks in the south-
 westerly line of the Survey 79 1/2 poles from the south west cor-
 ner thence N 19 1/2 W 102 poles to paper 2 white oaks,
 corner, 204 poles to 2 black oaks & white oak in Finley's

107 South line - The 3rd line begins at 2 black oaks in Ludlow's line 102 poles from either corner thence or 70 & 79 poles to the 2 white oaks in the 1st division line -

The 5th line begins at 2 black oaks in Finley's line 86 poles east of the 3 oaks at the end of the 1st line, thence N 19 1/2 E 172 poles to a white oak & 2 small hickories in the line of Northington's survey or 28 6 1/2 poles from the 2 black oaks and cherry tree corner to Northington

The 4th line begins at the white and black oak easterly corner to Finley, thence N 19 1/2 E 64 poles to the 3 black oaks in Northington's north line. The lots each bear the number of acres in each

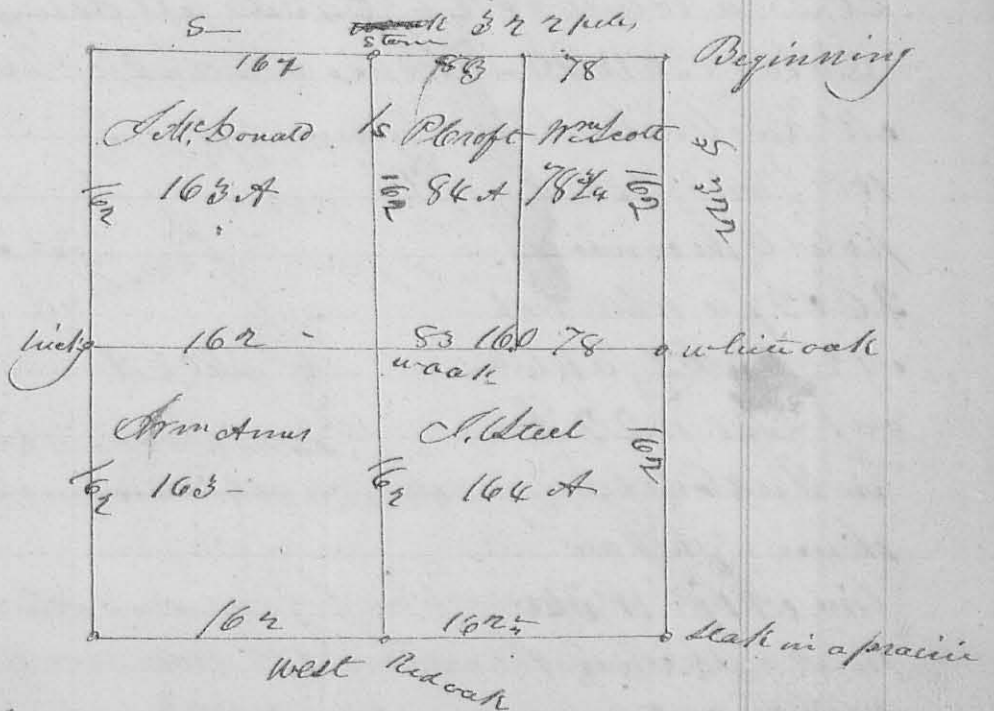
Richd Shockey }
 Jeffrey Williams }
 Geo. Moot maker }
 J. M. Mearns
 G. S. L. Co.

10 mo. Oct. 10th 1832

Survey No 116 (8283)

Surveyed and divided section 22 of R 13 M. P. S. as follows for Philip Croft, Wm. Arms, James Steel, David Moring, Wm. Scott & John Mc Donald beginning at the corner of 1617, 22, & 24 a bur oak N 13 1/2 W 16 L, the other bearing tree is down thence south with the old line (rapped the original 90 ac. corner

between Secs 16 & 22 a white oak north 125 L or 102 poles 320 poles to a stake in a prairie - thence west between Secs 21 & 22 rapped the original 90 ac corner at 162 1/2 poles a red oak north 16 L the bearing called for here is down 328 poles to the corner of 21, 22, 27 & 28, thence between 22 & 25



June 9. 1837. ✓

271

N^o 381

8789

Survey under order of Court the following line of Military Survey N^o 4479 & 4492 to ascertain a line between G. Moots & and L. Scaman. as follows. Beginning at the 30 mile Post in Sullivan line. Beginning Corner to Thomas Worthington Survey N^o 4479, thence with the present bearing of said line S 19 E 247 poles, crossing Mackachuck at 123 1/2 poles to two white oaks, the Beginning Corner to Jeps Davis Survey N^o 4492, thence N 75 E 140 poles to 3 Hickories, thence N 29 E 180 poles, crossing a small branch at 104 poles to a stake in a Prairie - Continued 12 poles to 2 Bur. oaks, one of them now cut down, Corner tree called for in the Davis Survey, thence N 75 E 266 1/2 poles to the north line of Worthington Survey N^o 4479, then west to the N. E. corner of Worthington Davis Survey, the Corner tree named in the Original call, at a distance of 104 poles, one white oak yet standing, thence S 19 E 247 poles, crossing small branch at 85 poles, Mackachuck at 123 1/2 poles, joining the end of the line (N 75 E 266 1/2 poles,) at 234 poles to 2 Black oaks, and Red Oak, marked for Worthington J. E. corner, thence S 71 W 275 poles, on Worthington southerly line, joining a white oak, Corner between said Moots & Scaman at 144 poles, to a stake in a Prairie, at the end of 180 poles on the line N 29 E, ascertaining a Corner between said Worthington & Davis. Said Survey. Peter Kelly Hampton Burgess Ch. man

L. C. Hopkins Co. Sur. G.

N^o 382

8282

Survey June 10. 1837 for P. Kelly part of Military Survey N^o 6576 as follows, Beginning at G. Moots S. E. Corner part of Lums Survey. At 2 white oaks, thence N 69 E 885 poles to a small hickory, and Jack Oak, thence S 19 E 737 poles to 2 small hickories and white oak, thence S 28 W 44 poles to a Black Oak, Hickory and Cherry, Corner to Worthington Survey, thence S 71 W 567 1/2 poles to 2 white oaks, South East Corner to Jeffrey William Land, thence N 20 W. 101 poles to the beginning. Containing 50 acres.

L. C. Hopkins Co. Sur. S. G. O.