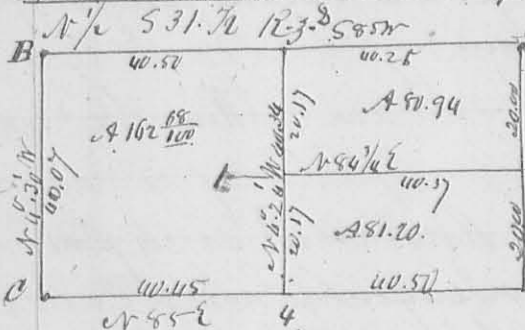


N 36 E 11.50 ch crossing the creek to a Jack Oak 16 to N 22 E 19
 Links; thence N 37 E 10.73 chain to stem, a White oak 30.2 to S 23 E
 13 Links, and White oak 15 to S 64 W 14 Links. thence
 N 89 1/2 W 23.75 ch crossing creek at 17.50 to E, thence South 45.50
 to beginning. Containing

total Cal. calculation amitt^o by agreement. Surveyed June 13, 1838.

L. Hopkins, C^o Sur. & C.

N^o 219



Description of Contents.

A. N.E. Corner of the Section B NW Corn 10

2 C. Oak 24 S. D. S 63 1/2 E 36 Links

- Buck 12 " " NW 22 "

D. Oak 12 " " N 22 W 57 1/2 Links

- Ash 3 " " S 2 1/2 E 44 " "

1 Elm 12 S. D. N 75 E 13 1/2 Links Elm S. D. S 43 1/2 E 59 "

2 Sugar 20 Inche Diameter bearing S 48 1/2 E distant 24 Links

4 Sugar 12 " " " " " " N 5 W " " "

Surveyed June 1838. for.

L. Hopkins C^o Surveyor S. O. A

N^o 420

8434

Surveyed Aug. 22nd 1838 for ~~David Thomas~~ Mackachack.
 part of Survey N^o 3225. Beginning at the N W corner to said Survey
 at Two Red Elm & Bl. Walnut (all down) thence S 20 1/2 E 90 poles
 crossing creek at Big road to a Stake near a small hickory &
 2 small ash; thence N 68 E 126 poles crossing a road at 50 poles to
 a Stake in the line of George Green; thence N 6 E 142 poles
 crossing a creek at 20 poles to a hickory & Two Sugars; thence
 S 65 W 170 poles to the beginning. This Survey shows contain 83 1/2
 acres - being made merely to fill the calls of Johnan. Due
 no Calculation was required.

Thos. Athey

Boyd Thomas, ch. men.

L. Hopkins C^o Sur. & C.

N^o 421

Surveyed Sept. first 1838 for Levi L. Stearns part of
 Survey N^o 9898 Beginning at an Ash & Sugar S. D. L. to
 N^o 9899, thence S 11 1/2 E 80 poles, crossing a branch at 10 poles to a
 Stake near a Buck Stump thence N 75 1/2 E 40 poles to
 Several Syms all down East line of the original Survey; thence
 N 12 W 28 1/2 poles, passing a Large Syms (down) at 70 poles