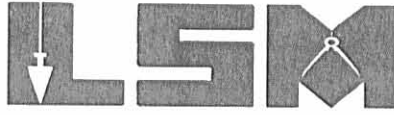


DEED 4-12-05 8WJ/ok

# Lee Surveying and Mapping Co., Inc.

Land Surveys • Topography • Subdivisions • Construction Layout

117 N. Madriver St.  
Bellefontaine OH 43311



Phone: (937) 593-7335  
Fax: (937) 593-7444

**1975-2005 - 30 YEARS OF EXCELLENCE**

**FANSLER  
111.072 ACRES**

Lying in Virginia Military Survey 6449, Monroe and Jefferson Townships, Logan County, Ohio.

Being all of the Steven R. Fansler original 86 acre tract, original 45 acre tract and original 5.60 acre tract as deeded and described in Official Record 139, Page 830, Parcel Two, Tracts 3, 4 and 6 of the Logan County Records of Deeds and being more particularly described as follows:

Beginning at a 1/2 inch iron bar found in a monument box on the intersection of the north line of Monroe Township and the center-line of County Highway 29.

THENCE, with the center-line of County Highway 29 (60 feet wide), N 34°-20'-54"W, a distance of 52.90 feet to a MAG nail set.

THENCE, with the southeasterly lines of the James Arnold Rash 9.270 acre tract (O.R. 427, Pg. 788), the following two courses:

N 24°-33'-02"E, a distance of 456.00 feet to a 6 inch wood post found, passing a 5/8 inch iron rod set at 35.04 feet.

N 57°-30'-45"E, a distance of 424.59 feet to a 5/8 inch iron rod found at the TRUE POINT OF BEGINNING, passing a 5/8 inch iron rod found at 2.00 feet and a 5/8 inch iron rod set at 194.33 feet.

THENCE, with the easterly lines of the said 9.270 acre tract and the Scott M. Wisniewski 14.633 acre tract (O.R. 490, Pg. 427), N 12°-55'-13"W, a distance of 852.20 feet to a 6 inch wood post found, passing a 5/8 inch iron rod found at 849.14 feet.

THENCE, with the south line of the Susan E. Rhyne, or her successor, as trustee 74.742 acre tract (O.R. 644, Pg. 530), S 87°-02'-01"E, a distance of 1504.07 feet to a 5/8 inch iron rod found.

THENCE, with the west line of the said 74.742 acre tract, N 3°-12'-29"E, a distance of 683.37 feet to a railroad spike found in the root of a 60 inch Hickory tree fence corner at a southwest corner of Virginia Military Survey 6447.

THENCE, with the north line of Virginia Military Survey 6449, the south line of Virginia Military Survey 6447 and the south line of the Edna K. Godwin 57.05 acre tract (O.R. 346, Pg. 837), S 86°-00'-00"E, a distance of 2053.18 feet to a 36 inch Sugar Maple Tree fence corner found, passing a 5/8 inch iron rod set at 2050.18 feet.

THENCE, with the west line of the Pamela K. Hook, etal, original 87.21 acre tract (O.R. 437, Pg. 242, Tract I), S 6°-52'-57"W, a distance of 890.08 feet to a 5/8 inch iron rod found on the south line of Virginia Military Survey 6449.

THENCE, with the south line of Virginia Military Survey 6449, the north line of Virginia Military Survey 4957, the north line of the said original 87.21 acre tract and the north line of the Melvin Sidesinger, etal 71.522 acre tract (O.R. 524, Pg. 665, Tract III), the following two courses:

S 63°-23'-02"W, a distance of 1074.67 feet to a 5/8 inch iron rod found.

S 61°-03'-30"W, a distance of 1848.00 feet to a 5/8 inch iron rod found.

THENCE, with the east line of the Steven R. Fansler original 21.66 acre tract (O.R. 139, Pg. 830, Parcel One), N 11°-56'-08"W, a distance of 79.02 feet to a 5/8 inch iron rod found.

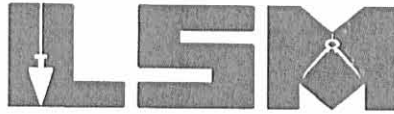
THENCE, with the east lines of the Steven R. Fansler 14.50 acre tract (O.R. 450, Pg. 525), the following two courses:

INDEXED ON MAP  
8752 1D-1

# Lee Surveying and Mapping Co., Inc.

Land Surveys • Topography • Subdivisions • Construction Layout

117 N. Madriver St.  
Bellefontaine OH 43311



Phone: (937) 593-7335  
Fax: (937) 593-7444

**1975-2005 - 30 YEARS OF EXCELLENCE**

N 32°-47'-07"W, a distance of 416.65 feet to a 5/8 inch iron rod found.

N 41°-07'-00"W, a distance of 716.71 feet to the point of beginning.

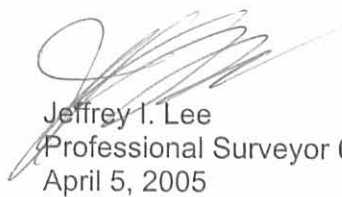
Containing 111.072 acres, of which 0.514 acre is in Monroe Township and 110.558 acres are in Jefferson Township.

The basis for bearings is the north line of Virginia Military Survey 6449, being S 86°-00'-00"E, and all other bearings are from angles and distances measured in a field survey by Lee Surveying and Mapping Co., Inc. on April 4, 2005.



ORIGINAL STAMP IN GREEN

Description prepared by:

  
Jeffrey I. Lee  
Professional Surveyor 6359  
April 5, 2005

L-3997

INDEXED ON MAP  
0752 10-2

REC'D 4-12-05 5:01 PM  
**Lee Surveying and Mapping Co., Inc.**

Land Surveys • Topography • Subdivisions • Construction Layout

117 N. Madriver St.  
Bellefontaine OH 43311



Phone: (937) 593-7335  
Fax: (937) 593-7444

**1975-2005 - 30 YEARS OF EXCELLENCE**

**FANSLER  
5.958 ACRES**

Lying in Virginia Military Survey 6449, Monroe and Jefferson Townships, Logan County, Ohio.

Being out of the Steven R. Fansler original 14.50 acre tract as deeded and described in Official Record 450, Page 525 of the Logan County Records of Deeds and being more particularly described as follows:

Beginning at a 1/2 inch iron bar found in a monument box on the intersection of the north line of Monroe Township and the center-line of County Highway 29.

THENCE, with the center-line of County Highway 29 (60 feet wide), N 34°-20'-54"W, a distance of 52.90 feet to a MAG nail set.

THENCE, with the southeasterly lines of the James Arnold Rash 9.270 acre tract (O.R. 427, Pg. 788), the following two courses:

N 24°-33'-02"E, a distance of 456.00 feet to a 6 inch wood post found, passing a 5/8 inch iron rod set at 35.04 feet.

N 57°-30'-45"E, a distance of 194.33 feet to a 5/8 inch iron rod set at the TRUE POINT OF BEGINNING, passing a 5/8 inch iron rod found at 2.00 feet.

THENCE, with the southeasterly line of the said 9.270 acre tract, N 57°-30'-45"E, a distance of 230.26 feet to a 5/8 inch iron rod found.

THENCE, with the west lines of the Steven R. Fansler original 45 acre tract and original 5.60 acre tract (O.R. 139, Pg. 830, Parcel Two, Tract 4 and Tract 6), S 41°-07'-00"E, a distance of 716.71 feet to a 5/8 inch iron rod found.

THENCE, with the west line of the said original 5.60 acre tract, S 32°-47'-07"E, a distance of 416.65 feet to a 5/8 inch iron rod found.

THENCE, with the north line of the Steven R. Fansler original 21.66 acre tract (O.R. 139, Page 830, Parcel One), S 89°-58'-07"W, a distance of 282.51 feet to a 5/8 inch iron rod set.

THENCE, N 38°-26'-37"W, a distance of 978.92 feet to the point of beginning.

Containing 5.958 acres, of which 0.673 acre is in Monroe Township and 5.285 acres are in Jefferson Township.

The basis for bearings is the north line of Virginia Military Survey 6449, being S 86°-00'-00"E, and all other bearings are from angles and distances measured in a field survey by Lee Surveying and Mapping Co., Inc. on April 4, 2005.



ORIGINAL STAMP IN GREEN

Description prepared by:

A handwritten signature in black ink, appearing to read 'Jeffrey I. Lee'.

Jeffrey I. Lee  
Professional Surveyor 6359  
April 5, 2005

L-3997

INDEXED ON MAP  
8752 10-3

RECORDED 4-12-05 5:44 PM JLL

# Lee Surveying and Mapping Co., Inc.

Land Surveys • Topography • Subdivisions • Construction Layout

117 N. Madriver St.  
Bellefontaine OH 43311



Phone: (937) 593-7335  
Fax: (937) 593-7444

**1975-2005 - 30 YEARS OF EXCELLENCE**

**FANSLER  
4.256 ACRES**

Lying in Virginia Military Surveys 6449 and 4957, Monroe Township, Logan County, Ohio.

Being out of the Steven R. Fansler original 21.66 acre tract as deeded and described in Official Record 139, Page 830, Parcel One of the Logan County Records of Deeds and being more particularly described as follows:

Beginning at a 1/2 inch iron bar found in a monument box on the intersection of the north line of Monroe Township and the center-line of County Highway 29.

THENCE, with the center-line of County Highway 29 (60 feet wide), the following two courses:

S 34°-20'-54"E, a distance of 1245.33 feet to a 1 inch iron rod found at an angle point.

N 83°-00'-09"E, a distance of 392.72 feet to a MAG nail set at the TRUE POINT OF BEGINNING.

THENCE, N 4°-47'-17"W, a distance of 644.57 feet to a 5/8 inch iron rod set, passing a 5/8 inch iron rod set at 30.03 feet.

THENCE, N 38°-26'-32"W, a distance of 171.24 feet to a 5/8 inch iron rod set.

THENCE, with the south line of the Steven R. Fansler 14.50 acre tract (O.R. 450, Pg. 525), N 89°-58'-07"E, a distance of 282.51 feet to a 5/8 inch iron rod found.

THENCE, with the west lines of the Steven R. Fansler original 5.60 acre tract (O.R. 139, Pg. 830, Parcel Two, Tract 6) and the Melvin Sidesinger, etal 71.522 acre tract (O.R. 524, Page 665, Tract III), S 11°-56'-08"E, a distance of 758.73 feet to a MAG nail found on the center-line of County Highway 29, passing 5/8 inch iron rods found at 79.02 feet and 728.61 feet.

THENCE, with the center-line of County Highway 29, S 83°-00'-09"W, a distance of 281.25 feet to the point of beginning.

Containing 4.256 acres, of which 0.192 acre is within the highway right-of-way, 0.723 acre is within Virginia Military Survey 6449 and 3.533 acres are within Virginia Military Survey 4957.

The basis for bearings is the north line of Virginia Military Survey 6449, being S 86°-00'-00"E, and all other bearings are from angles and distances measured in a field survey by Lee Surveying and Mapping Co., Inc. on April 4, 2005.

Description prepared by:

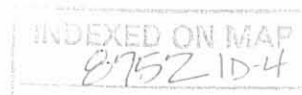


ORIGINAL STAMP IN GREEN

A handwritten signature in black ink, appearing to read 'Jeffrey I. Lee'.

Jeffrey I. Lee  
Professional Surveyor 6359  
April 5, 2005

L-3997



REC'D 4-12-05 SMM OK  
**Lee Surveying and Mapping Co., Inc.**

Land Surveys • Topography • Subdivisions • Construction Layout

117 N. Madriver St.  
Bellefontaine OH 43311



Phone: (937) 593-7335  
Fax: (937) 593-7444

**1975-2005 - 30 YEARS OF EXCELLENCE**

**FANSLER  
2.793 ACRES**

Lying in Virginia Military Surveys 6449 and 4957, Monroe Township, Logan County, Ohio.

Being out of the Steven R. Fansler original 21.66 acre tract as deeded and described in Official Record 139, Page 830, Parcel One of the Logan County Records of Deeds and being more particularly described as follows:

Beginning at a 1/2 inch iron bar found in a monument box on the intersection of the north line of Monroe Township and the center-line of County Highway 29.

THENCE, with the center-line of County Highway 29 (60 feet wide), the following two courses:

S 34°-20'-54"E, a distance of 1245.33 feet to a 1 inch iron rod found at an angle point.

N 83°-00'-09"E, a distance of 195.89 feet to a MAG nail set at the TRUE POINT OF BEGINNING.

THENCE, N 10°-48'-30"W, a distance of 271.65 feet to a 5/8 inch iron rod set, passing a 5/8 inch iron rod set at 30.07 feet.

THENCE, N 73°-32'-09"E, a distance of 43.50 feet to a 5/8 inch iron rod set.

THENCE, N 4°-01'-50"W, a distance of 333.13 feet to a 5/8 inch iron rod set.

THENCE, N 72°-31'-43"E, a distance of 182.62 feet to a 5/8 inch iron rod set.

THENCE, S 4°-47'-17"E, a distance of 644.57 feet to a MAG nail set on the center-line of County Highway 29, passing a 5/8 inch iron rod set at 614.54 feet.

THENCE, with the center-line of County Highway 29, S 83°-00'-09"W, a distance of 196.83 feet to the point of beginning.

Containing 2.793 acres, of which 0.137 acre is within the highway right-of-way, 0.276 acre is within Virginia Military Survey 6449 and 2.517 acres are within Virginia Military Survey 4957.

The basis for bearings is the north line of Virginia Military Survey 6449, being S 86°-00'-00"E, and all other bearings are from angles and distances measured in a field survey by Lee Surveying and Mapping Co., Inc. on April 4, 2005.

Description prepared by:



*Jeffrey I. Lee*  
Jeffrey I. Lee  
Professional Surveyor 6359  
April 5, 2005

L-3997

INDEXED ON MAP  
0752 10-5



22210 4-12-05 SVM OK

# Lee Surveying and Mapping Co., Inc.

Land Surveys • Topography • Subdivisions • Construction Layout

117 N. Madriver St.  
Bellefontaine OH 43311



Phone: (937) 593-7335  
Fax: (937) 593-7444

**1975-2005 - 30 YEARS OF EXCELLENCE**

**FANSLER  
3.169 ACRES**

Lying in Virginia Military Surveys 6449 and 4957, Monroe Township, Logan County, Ohio.

Being out of the Steven R. Fansler original 21.66 acre tract as deeded and described in Official Record 139, Page 830, Parcel One of the Logan County Records of Deeds and being more particularly described as follows:

Beginning at a 1/2 inch iron bar found in a monument box on the intersection of the north line of Monroe Township and the center-line of County Highway 29.

THENCE, with the center-line of County Highway 29 (60 feet wide), S 34°-20'-54"E, a distance of 773.06 feet to a MAG nail set at the TRUE POINT OF BEGINNING.

THENCE, with the southeasterly line of the Deborah Cooper 3.352 acre tract (O.R. 177, Pg. 533), N 55°-50'-29"E, a distance of 286.79 feet to a 5/8 inch iron rod found, passing a 5/8 inch iron rod found at 30.00 feet.

THENCE, S 33°-33'-34"E, a distance of 312.30 feet to a 5/8 inch iron rod set.

THENCE, S 10°-48'-30"E, a distance of 271.65 feet to a MAG nail set on the center-line of County Highway 29, passing a 5/8 inch iron rod set at 241.58 feet.

THENCE, with the center-line of County Highway 29, the following two courses:

S 83°-00'-09"W, a distance of 195.89 feet to a 1 inch iron rod found at an angle point.

N 34°-20'-54"W, a distance of 472.27 feet to the point of beginning.

Containing 3.169 acres, of which 0.447 acre is within the highway right-of-way, 0.560 acre is within Virginia Military Survey 6449 and 2.609 acres are within Virginia Military Survey 4957.

The basis for bearings is the north line of Virginia Military Survey 6449, being S 86°-00'-00"E, and all other bearings are from angles and distances measured in a field survey by Lee Surveying and Mapping Co., Inc. on April 4, 2005.

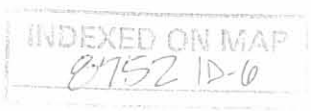
Description prepared by:



ORIGINAL STAMP IN GREEN

*Jeffrey I. Lee*  
Jeffrey I. Lee  
Professional Surveyor 6359  
April 5, 2005

L-3997

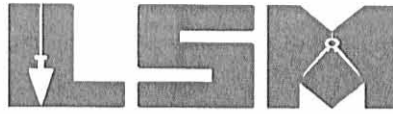


REVISED 4-12-05 SALLY OK

# Lee Surveying and Mapping Co., Inc.

Land Surveys • Topography • Subdivisions • Construction Layout

117 N. Madriver St.  
Bellefontaine OH 43311



Phone: (937) 593-7335  
Fax: (937) 593-7444

**1975-2005 - 30 YEARS OF EXCELLENCE**

**FANSLER  
3.039 ACRES**

Lying in Virginia Military Surveys 6449 and 4957, Monroe Township, Logan County, Ohio.

Being out of the Steven R. Fansler original 21.66 acre tract as deeded and described in Official Record 139, Page 830, Parcel One of the Logan County Records of Deeds and being more particularly described as follows:

Beginning at a 1/2 inch iron bar found in a monument box on the intersection of the north line of Monroe Township and the center-line of County Highway 29.

THENCE, with the center-line of County Highway 29 (60 feet wide), S 34°-20'-54"E, a distance of 127.17 feet to a MAG nail set.

THENCE, with the north line of the Deborah Cooper 3.352 acre tract (O.R. 177, Pg. 533) and the south line of the Steven R. Fansler 14.50 acre tract (O.R. 450, Pg. 525), S 80°-19'-29"E, a distance of 399.73 feet to a 5/8 inch iron rod found at the TRUE POINT OF BEGINNING, passing a 5/8 inch iron rod set at 41.72 feet.

THENCE, with the south lines of the said 14.50 acre tract, the following two courses:

S 80°-19'-29"E, a distance of 189.64 feet to a 5/8 inch iron rod set.

N 89°-58'-07"E, a distance of 279.43 feet to a 5/8 inch iron rod set.

THENCE, S 38°-26'-32"E, a distance of 171.24 feet to a 5/8 inch iron rod set.

THENCE, S 72°-31'-43"W, a distance of 182.62 feet to a 5/8 inch iron rod set.

THENCE, S 4°-01'-50"E, a distance of 333.13 feet to a 5/8 inch iron rod set.

THENCE, S 73°-32'-09"W, a distance of 43.50 feet to a 5/8 inch iron rod set.

THENCE, N 33°-33'-34"W, a distance of 312.30 feet to a 5/8 inch iron rod found.


THENCE, with the east line of the aforesaid 3.352 acre tract, N 34°-14'-57"W, a distance of 369.05 feet to the point of beginning.

Containing 3.039 acres, of which 2.520 acres are in Virginia Military Survey 6449 and 0.519 acre is in Virginia Military Survey 4957.

The basis for bearings is the north line of Virginia Military Survey 6449, being S 86°-00'-00"E, and all other bearings are from angles and distances measured in a field survey by Lee Surveying and Mapping Co., Inc. on April 4, 2005.

Description prepared by:



  
Jeffrey I. Lee  
Professional Surveyor 6359  
April 5, 2005

L-3997



2005 4-12-05 8:11 AM OK  
**Lee Surveying and Mapping Co., Inc.**

Land Surveys • Topography • Subdivisions • Construction Layout

117 N. Madriver St.  
Bellefontaine OH 43311



Phone: (937) 593-7335  
Fax: (937) 593-7444

**1975-2005 - 30 YEARS OF EXCELLENCE**

**FANSLER  
8.962 ACRES**

Lying in Virginia Military Survey 6449, Monroe and Jefferson Townships, Logan County, Ohio.

Being out of the Steven R. Fansler original 14.50 acre tract as deeded and described in Official Record 450, Page 525 of the Logan County Records of Deeds and being more particularly described as follows:

Beginning at a 1/2 inch iron bar found in a monument box on the intersection of the north line of Monroe Township and the center-line of County Highway 29.

THENCE, with the center-line of County Highway 29 (60 feet wide), N 34°-20'-54"W, a distance of 52.90 feet to a MAG nail set.

THENCE, with the southeasterly lines of the James Arnold Rash 9.270 acre tract (O.R. 427, Pg. 788), the following two courses:

N 24°-33'-02"E, a distance of 456.00 feet to a 6 inch wood post found, passing a 5/8 inch iron rod set at 35.04 feet.

N 57°-30'-45"E, a distance of 194.33 feet to a 5/8 inch iron rod set, passing a 5/8 inch iron rod found at 2.00 feet.

THENCE, S 38°-26'-37"E, a distance of 978.92 feet to a 5/8 inch iron rod set.

THENCE, with the north line of the Steven R. Fansler original 21.66 acre tract (O.R. 139, Pg. 830, Parcel One), S 89°-58'-07"W, a distance of 279.43 feet to a 5/8 inch iron rod set.

THENCE, with the north lines of the said original 21.66 acre tract and the Deborah Cooper 3.352 acre tract (O.R. 177, Pg. 533), N 80°-19'-29"W, a distance of 589.38 feet to a MAG nail set on the center-line of County Highway 29, passing a 5/8 inch iron rod found at 189.64 feet and a 5/8 inch iron rod set at 547.66 feet.

THENCE, with the center-line of County Highway 29, N 34°-20'-54"W, a distance of 127.17 feet to the point of beginning.

Containing 8.962 acres, of which 0.140 acre is within the highway right-of-way, 1.674 acres are in Monroe Township and 7.288 acres are in Jefferson Township.

The basis for bearings is the north line of Virginia Military Survey 6449, being S 86°-00'-00"E, and all other bearings are from angles and distances measured in a field survey by Lee Surveying and Mapping Co., Inc. on April 4, 2005.

Description prepared by:



ORIGINAL STAMP IN GREEN

A handwritten signature in black ink, appearing to read 'Jeffrey I. Lee'.

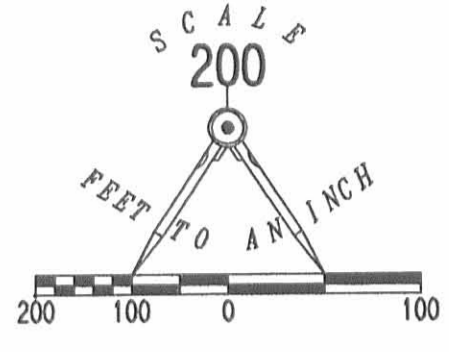
Jeffrey I. Lee  
Professional Surveyor 6359  
April 5, 2005

L-3997





2007 4-12-05 8:44 AM



- LEGEND:
- 1 INCH IRON ROD FOUND
  - MAG NAIL SET
  - 5/8 INCH IRON ROD SET
  - 5/8 INCH IRON ROD FOUND
  - 6 INCH WOOD POST FOUND
  - RAILROAD SPIKE FOUND
  - MAG NAIL FOUND
  - PK NAIL FOUND
  - 1/2 INCH IRON BAR FOUND IN MONUMENT BOX

SCOTT M. WISNIEWSKI  
14.633 ACRES  
O.R. 490, PG. 427

JAMES ARNOLD RASH  
9.270 ACRES  
O.R. 427, PG. 788

8.962 ACRES  
OF WHICH 0.140 ACRE IS WITHIN  
THE HIGHWAY RIGHT-OF-WAY

STEVEN R. FANSLER  
14.50 ACRES  
O.R. 450, PG. 525

(7.288 ACRES)  
(1.674 ACRES)

3.039 ACRES

DEBORAH COOPER  
3.352 ACRES  
O.R. 177, PG. 553

3.169 ACRES

OF WHICH 0.447  
ACRE IS WITHIN  
THE HIGHWAY  
RIGHT-OF-WAY

2.793 ACRES  
OF WHICH 0.137 ACRE IS WITHIN  
THE HIGHWAY RIGHT-OF-WAY

4.256 ACRES  
OF WHICH 0.192 ACRE IS WITHIN  
THE HIGHWAY RIGHT-OF-WAY

5.958 ACRES

PARCEL TWO-TRACT 4

111.072 ACRES

S 87°02'01" E  
1504.07'

N 03°12'29" E  
683.37'

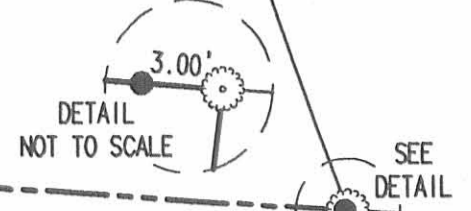
RAILROAD SPIKE FOUND IN A ROOT  
OF A 60" HICKORY TREE FENCE CORNER  
(SPIKE IS IN NORTHWEST  
SIDE OF TREE)

SUSAN E. RHYNE,  
OR HER SUCCESSOR,  
AS TRUSTEE  
74.742 ACRES  
O.R. 644, PG. 530

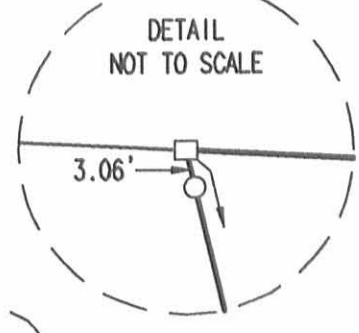
VIRGINIA MILITARY SURVEY 6447  
VIRGINIA MILITARY SURVEY 6449

(BASIS FOR BEARINGS)  
S 86°00'00" E  
2053.18'

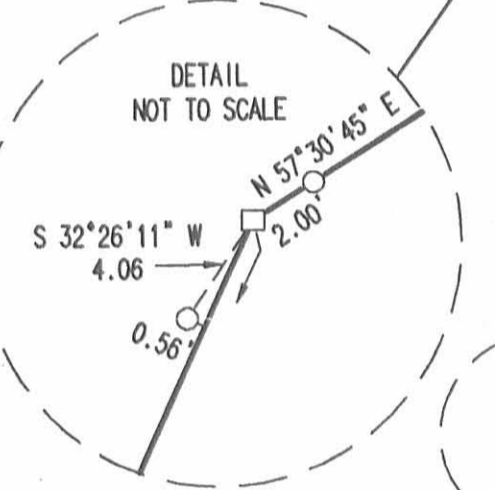
EDNA K. GODWIN  
57.05 ACRES  
O.R. 346, PG. 837



36" SUGAR MAPLE TREE  
FENCE CORNER FOUND

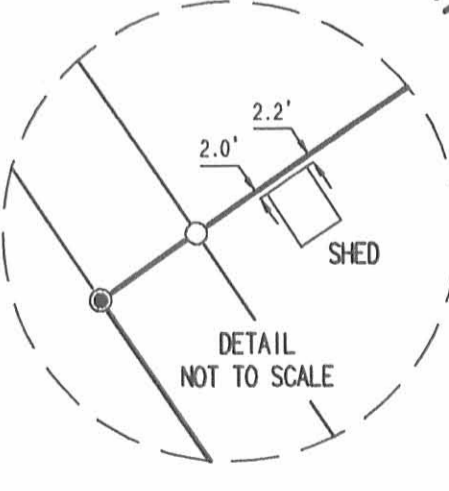


DETAIL  
NOT TO SCALE



DETAIL  
NOT TO SCALE

SEE  
DETAIL



DETAIL  
NOT TO SCALE

COUNTY HIGHWAY 29 (60')

COUNTY HIGHWAY 29 (60')

PARCEL TWO TRACT 4 (36.877 ACRES)  
PARCEL TWO TRACT 3 (68.385 ACRES)

PARCEL TWO TRACT 4 (36.877 ACRES)  
PARCEL TWO TRACT 6 (5.810 ACRES)

JEFFERSON TOWNSHIP  
MONROE TOWNSHIP

MELVIN SIDESINGER, ETAL  
71.522 ACRES  
O.R. 524, PG. 665  
TRACT 111

VIRGINIA MILITARY SURVEY 6449  
VIRGINIA MILITARY SURVEY 4957

PAMELA K. HOOK, ETAL  
ORIGINAL 87.21 ACRES  
O.R. 437, PG. 242  
TRACT I

SURVEY OF SEVEN TRACTS OUT OF THE  
STEVEN R. FANSLER  
21.66 ACRE TRACT, 86 ACRE TRACT,  
45 ACRE TRACT AND 5.60 ACRE TRACT  
OFFICIAL RECORD 139, PAGE 830  
PARCEL ONE AND  
PARCEL TWO-TRACTS 3, 4 AND 6  
AND 14.50 ACRE TRACT  
OFFICIAL RECORD 450, PAGE 525  
VIRGINIA MILITARY SURVEYS 6449 AND 4957  
JEFFERSON AND MONROE TOWNSHIPS  
LOGAN COUNTY, OHIO



SURVEYED BY:  
*Jeffrey I. Lee*  
JEFFREY I. LEE  
PROFESSIONAL SURVEYOR 6359  
APRIL 4, 2005

COPYRIGHT 2005 BY:  
LEE SURVEYING & MAPPING CO., INC.  
117 North Madriver Street  
BELLEFONTAINE, OHIO 43311  
(937) 593-7335  
KSR D0305 3997035 L-3997-2

2 WORKING DAYS  
BEFORE YOU DIG  
CALL TOLL FREE 800-362-2764  
OHIO UTILITIES PROTECTION SERVICE

INDEXED ON THE  
8752 IP

REC'D 8-4-06 SM&K

# Lee Surveying and Mapping Co., Inc.

Land Surveys • Topography • Subdivisions • Construction Layout

117 N. Madriver St.  
Bellefontaine OH 43311



Phone: (937) 593-7335  
Fax: (937) 593-7444

**1975-2005 - 30 YEARS OF EXCELLENCE**

**FANSLER  
3.663 ACRES**

Lying in Virginia Military Surveys 6449 and 4957, Monroe Township, Logan County, Ohio.

Being out of the Steven R. Fansler 21.66 acre tract as deeded and described in Official Record 139, Page 830, Parcel One of the Logan County Records of Deeds and being more particularly described as follows:

Commencing at a 1/2 inch iron bar found in a monument box on the intersection of the north line of Monroe Township and the center-line of County Highway 29.

THENCE, with the center-line of County Highway 29 (60 feet wide), S 34°-20'-54"E, a distance of 823.06 feet to a MAG nail set at the TRUE POINT OF BEGINNING.

THENCE, N 54°-22'-20"E, a distance of 492.18 feet to a 5/8 inch iron rod set, passing a 5/8 inch iron rod set at 30.01 feet.

THENCE, S 4°-01'-50"W, a distance of 333.13 feet to a 5/8 inch iron rod set.

THENCE, S 73°-32'-09"W, a distance of 43.50 feet to a 5/8 inch iron rod set.

THENCE, S 10°-48'-30"E, a distance of 271.65 feet to a MAG nail set on the center-line of County Highway 29, passing a 5/8 inch iron rod set at 241.58 feet.

THENCE, with the center-line of County Highway 29, the following two courses:

S 83°-00'-09"W, a distance of 195.89 feet to a 1 inch iron rod found.

N 34°-20'-54"W, a distance of 422.27 feet to the point of beginning.

Containing 3.663 acres, of which 0.413 acre is within the highway right-of-way. There is 0.537 acre in Virginia Military Survey 6449 and 3.126 acres in Virginia Military Survey 4957.

The basis for bearings is the north line of Virginia Military Survey 6449, being S 86°-00'-00"E, and all other bearings are from angles and distances measured in a field survey by Lee Surveying and Mapping Co., Inc. on July 28, 2006.

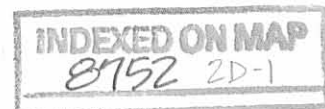


ORIGINAL STAMP IN GREEN

Description prepared by:

Jeffrey I. Lee  
Professional Surveyor 6359  
August 1, 2006

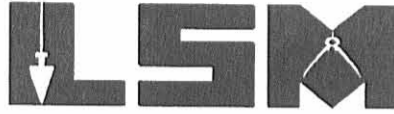
3997076



# Lee Surveying and Mapping Co., Inc.

Land Surveys • Topography • Subdivisions • Construction Layout

117 N. Madriver St.  
Bellefontaine OH 43311



Phone: (937) 593-7335  
Fax: (937) 593-7444

**1975-2005 - 30 YEARS OF EXCELLENCE**

**FANSLER  
2.544 ACRES**

Lying in Virginia Military Survey 6449, Monroe Township, Logan County, Ohio.

Being out of the Steven R. Fansler 21.66 acre tract as deeded and described in Official Record 139, Page 830, Parcel One of the Logan County Records of Deeds and being more particularly described as follows:

Commencing at a 1/2 inch iron bar found in a monument box on the intersection of the north line of Monroe Township and the center-line of County Highway 29.

THENCE, with the center-line of County Highway 29 (60 feet wide), S 34°-20'-54"E, a distance of 773.06 feet to a MAG nail set at the TRUE POINT OF BEGINNING.

THENCE, with the lines of the Ernest Richards 3.352 acre tract (O.R. 771, Pg. 670), the following two courses:

N 55°-50'-29"E, a distance of 286.79 feet to a 5/8 inch iron rod found, passing a 5/8 inch iron rod found at 30.00 feet.

N 34°-14'-57"W, a distance of 369.05 feet to a 5/8 inch iron rod found.

THENCE, with the lines of the Steven R. Fansler 14.50 acre tract (O.R. 450, Pg. 525), the following two courses:

S 80°-19'-29"E, a distance of 189.64 feet to a 5/8 inch iron rod set.

N 89°-58'-07"E, a distance of 279.43 feet to a 5/8 inch iron rod set.

THENCE, with the west line of the Larry Morris 4.256 acre tract (O.R. 774, Pg. 436, Tract I), S 38°-26'-32"E, a distance of 171.24 feet to a 5/8 inch iron rod set.

THENCE, S 72°-31'-43"W, a distance of 182.62 feet to a 5/8 inch iron rod set.

THENCE, S 54°-22'-20"W, a distance of 492.18 feet to a MAG nail set on the center-line of County Highway 29, passing a 5/8 inch iron rod set at 462.17 feet.

THENCE, with the center-line of County Highway 29, N 34°-20'-54"W, a distance of 50.00 feet to the point of beginning.

Containing 2.544 acres, of which 0.034 acre is within the highway right-of-way.

The basis for bearings is the north line of Virginia Military Survey 6449, being S 86°-00'-00"E, and all other bearings are from angles and distances measured in a field survey by Lee Surveying and Mapping Co., Inc. on July 28, 2006.



ORIGINAL STAMP IN GREEN

Description prepared by:

A handwritten signature in black ink, appearing to read 'Jeffrey I. Lee'.

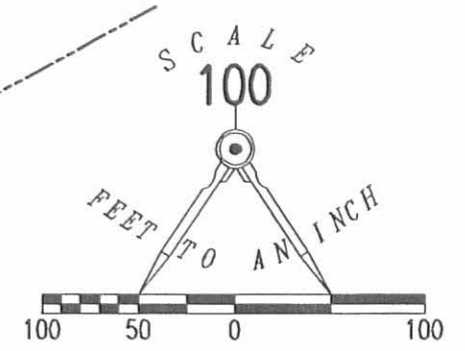
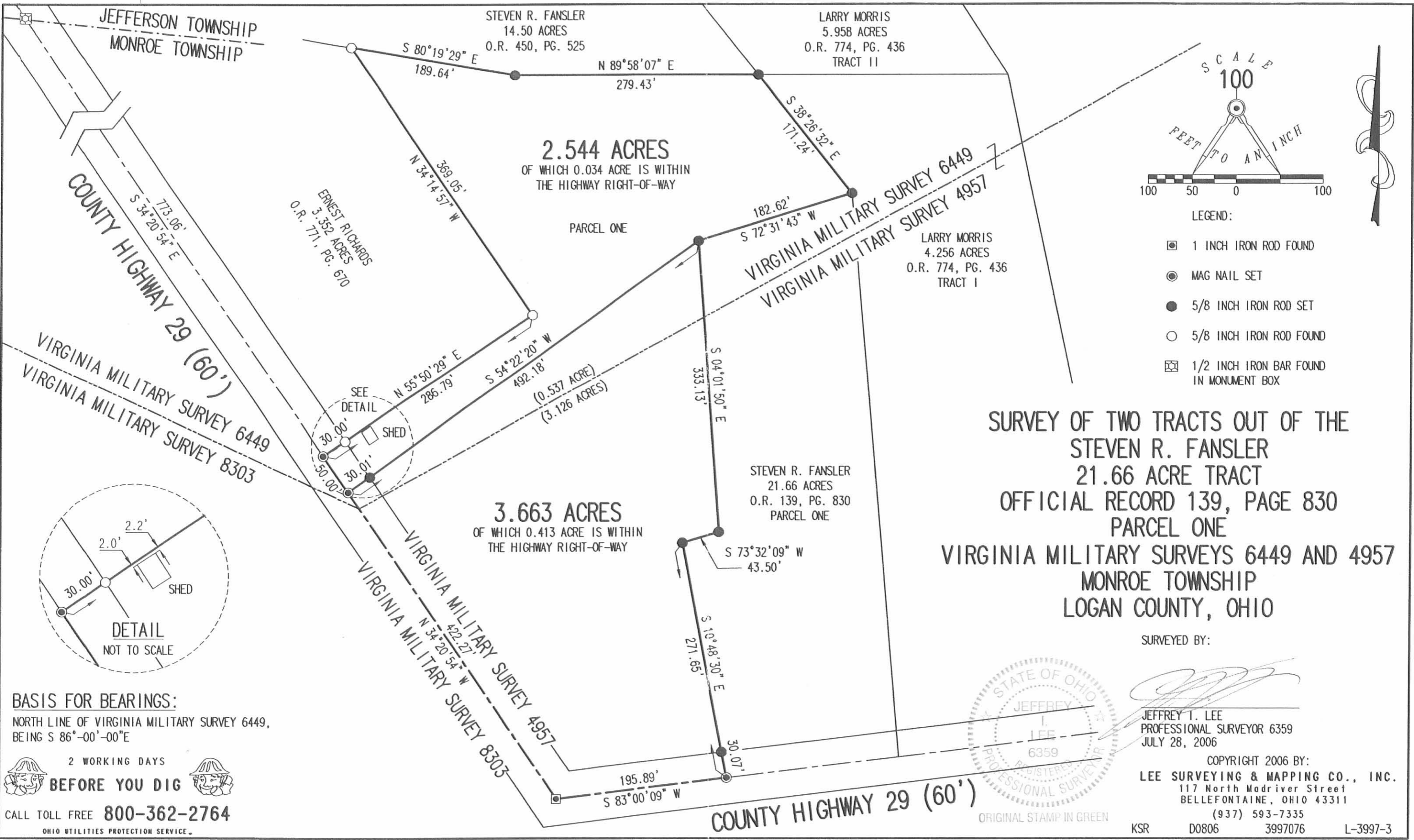
Jeffrey I. Lee  
Professional Surveyor 6359  
August 1, 2006

3997076





REV'D 8-4-06 SMY OK



- LEGEND:
- ☐ 1 INCH IRON ROD FOUND
  - MAG NAIL SET
  - 5/8 INCH IRON ROD SET
  - 5/8 INCH IRON ROD FOUND
  - ☒ 1/2 INCH IRON BAR FOUND IN MONUMENT BOX

**SURVEY OF TWO TRACTS OUT OF THE  
STEVEN R. FANSLER  
21.66 ACRE TRACT  
OFFICIAL RECORD 139, PAGE 830  
PARCEL ONE  
VIRGINIA MILITARY SURVEYS 6449 AND 4957  
MONROE TOWNSHIP  
LOGAN COUNTY, OHIO**

SURVEYED BY:



*Jeffrey I. Lee*  
**JEFFREY I. LEE**  
 PROFESSIONAL SURVEYOR 6359  
 JULY 28, 2006

COPYRIGHT 2006 BY:  
**LEE SURVEYING & MAPPING CO., INC.**  
 117 North Madriver Street  
 BELLEFONTAINE, OHIO 43311  
 (937) 593-7335  
 KSR D0806 3997076 L-3997-3

**BASIS FOR BEARINGS:**  
 NORTH LINE OF VIRGINIA MILITARY SURVEY 6449,  
 BEING S 86°-00'-00"E

2 WORKING DAYS  
**BEFORE YOU DIG**  
 CALL TOLL FREE **800-362-2764**  
 OHIO UTILITIES PROTECTION SERVICE.

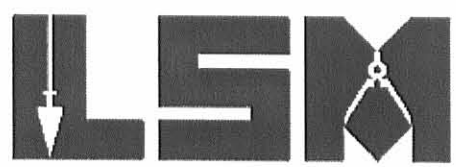
INDEXED ON MAP  
 8752 2P

REC'D 8-13-12 smj/au

# Lee Surveying and Mapping Co., Inc.

Land Surveys • Topography • Subdivisions • Construction Layout

117 N. Madriver St.  
Bellefontaine OH 43311



Phone: (937) 593-7335  
Fax: (937) 593-7444  
surveys@lsminc.us

## MORRIS 8.469 ACRES

Lying in Virginia Military Surveys 6449 and 4957, Jefferson and Monroe Townships, Logan County, Ohio.

Being all of the Larry Morris and Teresa Morris 4.256 acre tract, (Tract I), part of the 5.958 acre tract, (Tract II) and part of the 111.072 acre tract (Tract III) as deeded and described in Official Record 774, Page 436 and being more particularly described as follows:

Commencing at a 1 inch iron bar found at P.I. Station 112+44.76, per Logan County Engineer's Map X-29A.

THENCE, With the center-line of County Highway 29 (60 feet wide), N 83°-00'-09"E, a distance of 392.72 feet to a MAG nail found at the TRUE POINT OF BEGINNING.

THENCE, with the east line of the Todd A. Newman and Michelle R. Newman 2.793 acre tract (O.R. 884, Pg. 950), N 04°-47'-17"W, a distance of 644.57 feet to a 5/8 inch iron rod found, passing a 5/8 inch iron rod found at 30.03 feet.

THENCE, with a east line of the Robert D. Jacobs II and Renee L. Jacobs 2.544 acre tract (O.R. 1018, Pg. 447, Parcel II) and a east line of the Steven R. Fansler 14.50 acre tract (O.R. 450, Pg. 525), N 38°-26'-34"W, a distance of 321.23 feet to a 5/8 inch iron rod set.

THENCE, N 59°-25'-55"E, a distance of 729.96 feet to a 5/8 inch iron rod set.

THENCE, S 43°-02'-01"E, a distance of 232.71 feet to a 5/8 inch iron rod set.

THENCE, S 52°-16'-06"W, a distance of 520.38 feet to a 5/8 inch iron rod found.

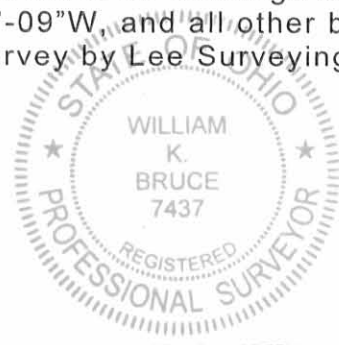
THENCE, with the west line of the Larry Morris and Teresa Morris 39.41 acre tract (O.R. 939, Pg. 659), S 11°-56'-08"E, a distance of 758.73 feet to a MAG nail found, passing a 5/8 inch iron rod found at 728.61 feet.

THENCE, with the center-line of County Highway 29, S 83°-00'-09"W, a distance of 281.25 feet to the point of beginning.

Containing 8.469 acres of which 0.192 acre is within the highway right-of-way. 3.407 acres within Jefferson Township, 5.062 acres within Monroe Township. 4.928 acre within Virginia Military Survey 6449 and 3.541 acres within Virginia Military Survey 4957

Property is subject to any and all previous easements and rights-of-way of record.

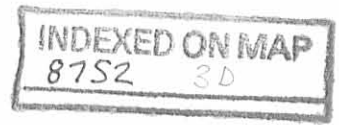
The basis for bearings is the center-line of County Highway 29, being S 83°-00'-09"W, and all other bearings are from angles and distances measured in a field survey by Lee Surveying and Mapping Co., Inc. on August 8, 2012.



Description prepared by:

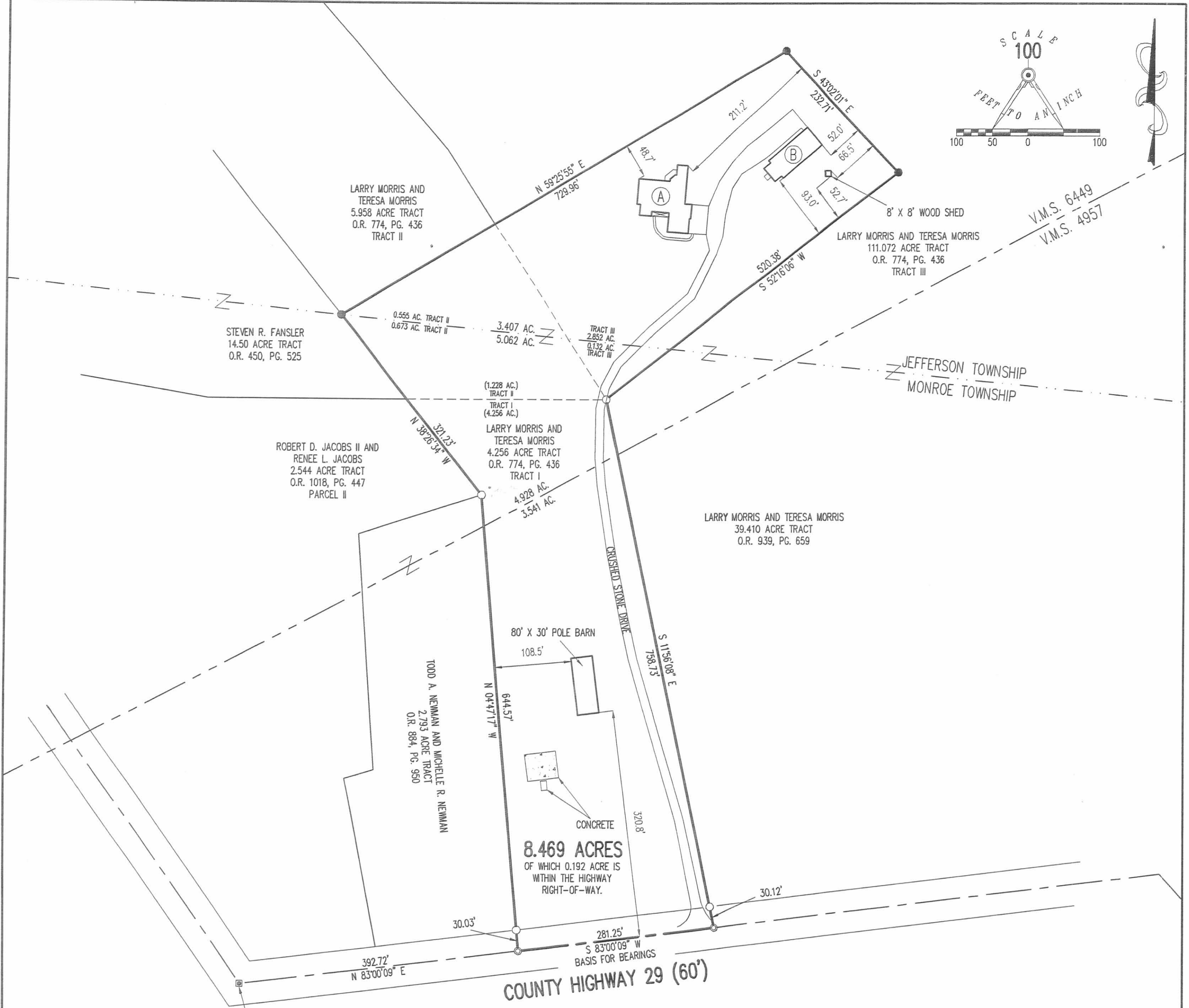
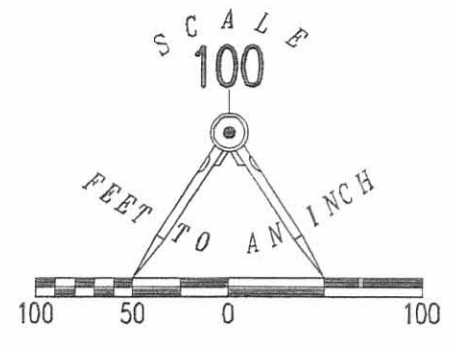
*William K. Bruce*

William K. Bruce  
Professional Surveyor 7437  
August 8, 2012

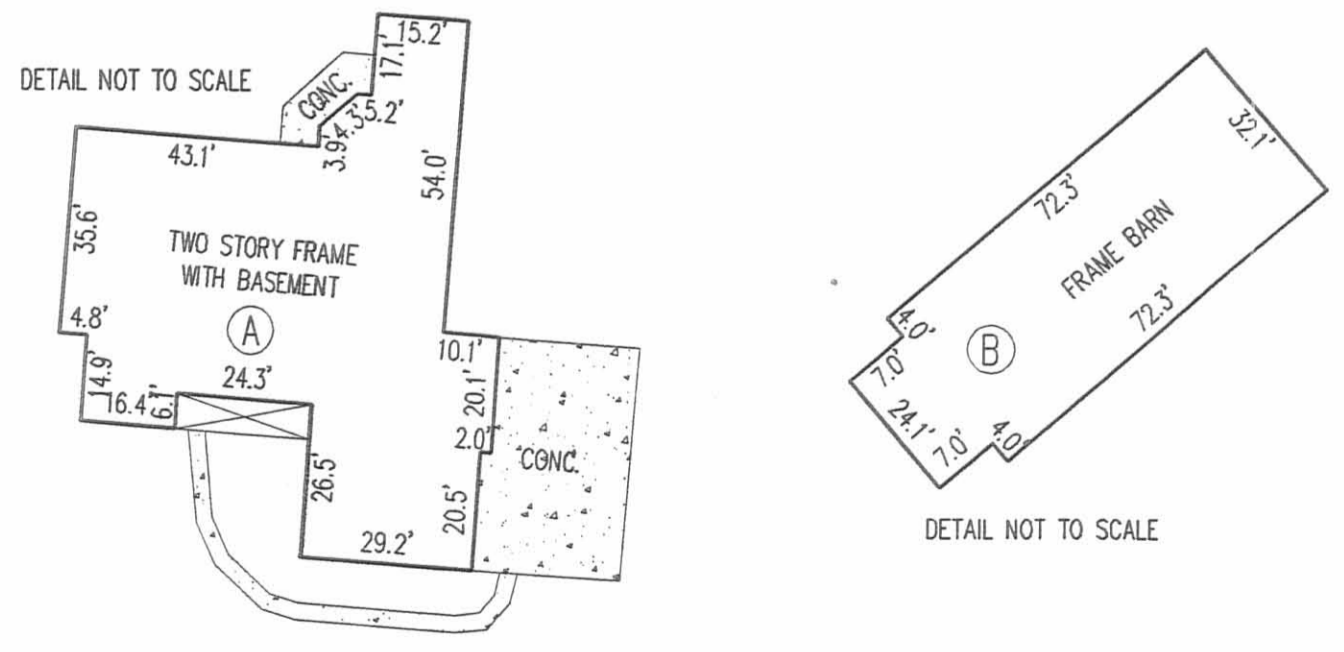


L-3997M





P.I. STA. 112+44.76  
LOGAN COUNTY ENGINEER'S MAP X-29A



- LEGEND
- 5/8 INCH IRON ROD SET WITH PLASTIC I.D. CAP STAMPED "LSM7437"
  - 5/8 INCH IRON ROD FOUND
  - ⊙ MAG NAIL FOUND
  - ⊠ 1 INCH IRON BAR FOUND

**MORTGAGE LOCATION AND SURVEY OF A 8.469 ACRE TRACT OUT OF THE LARRY MORRIS AND TERESA MORRIS ALL OF THE 4.256 ACRE TRACT AND PART OF THE 5.958 ACRE TRACT AND PART OF THE 111.072 ACRE TRACT OFFICIAL RECORD 774, PAGE 436, TRACTS I, II AND III VIRGINIA MILITARY SURVEYS 6449 AND 4957 JEFFERSON AND MONROE TOWNSHIPS LOGAN COUNTY, OHIO**



SURVEYED BY:  
*William K. Bruce*  
WILLIAM K. BRUCE  
PROFESSIONAL SURVEYOR 7437  
AUGUST 8, 2012

2 WORKING DAYS  
**BEFORE YOU DIG**  
CALL TOLL FREE **800-362-2764**  
OHIO UTILITIES PROTECTION SERVICE

INDEXED ON MAP  
8752 3P

COPYRIGHT 2012 BY:  
**LEE SURVEYING & MAPPING CO., INC.**  
117 North Madriver Street  
BELLEFONTAINE, OHIO 43311  
(937) 593-7335  
WWW.LSMINC.US  
surveys@lsminc.us  
ADW D0712 39970712M L-3997-2



**APPROVED**

S-13-22

**BLAKE PALMER SURVEY**  
**10.198 Acres**  
**April 4, 2022**

The following described 10.198 acre tract of land is situated in the State of Ohio, County of Logan, Township of Monroe, and V.M.S. 4957, being part of Teresa A. Morris Trustee's 39.410 acre tract described in Official Record 1145, page 271, and said 10.198 acre tract being more particularly described as follows:

Beginning for reference at a 5/8 inch iron pin found with cap marked "LOGAN COUNTY" at the intersection of County Highway 5 (60 feet wide) with the centerline of County Highway 29 (60 feet wide) and at the south corner of Thomas W. Godwin and C. Joan Godwin's 32.112 acre Parcel II, Tract II described in Official Record 1063, page 855;

Thence North 40°42'41" West 1201.43 feet, following the centerline of County Highway 29 and a southwest line of said 32.112 acre tract, to a magnetic nail found;

Thence following the centerline of County Highway and a westerly line of said 32.112 acre tract along a curve to the left, said curve having a delta angle of 34°09'03", a radius of 319.91 feet, an arc length of 190.68 feet, and a chord bearing North 57°47'12" West 187.87 feet, to a magnetic nail found at the southeast corner of said 39.410 acre tract, said nail marking the *place of beginning*;

Thence following the centerline of County Highway and a southerly line of said 39.410 acre tract along a curve to the left, said curve having a *delta angle of 20°43'25"*, a radius of *319.91 feet*, an arc length of *115.71 feet*, and a chord bearing *North 85°13'26" West 115.08 feet*, to a magnetic nail found;

Thence *South 84°24'51" West 165.88 feet*, following the centerline of County Highway 29 and a south line of said 39.410 acre tract, to a magnetic nail set;

Thence *North 5°35'09" West 636.48 feet*, departing from the centerline of County Highway 29 and entering said 39.410 acre tract, passing at 30.00 feet an iron pin set, to an iron pin set;

Thence *South 81°28'02" East 1292.62 feet*, continuing through said 39.410 acre tract, to a 5/8 inch iron pin found at an angle point in the northwest line of said 32.112 acre tract;

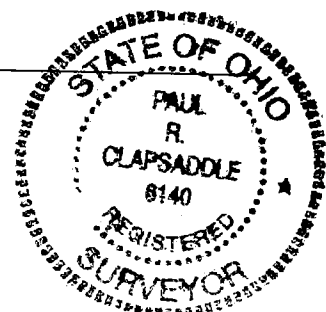
Thence *South 67°32'04" West 470.90 feet*, following a northwest line of said 32.112 acre tract and a southeast line of said 39.410 acre tract, to a 5/8 inch iron pin found with cap marked "LEE PS 6359";

Thence *South 63°01'48" West 562.61 feet*, following a northwest line of said 32.112 acre tract and a southeast line of said 39.410 acre tract, passing at 520.00 feet, a 5/8 inch iron pin found, to the *place of beginning, containing 10.198 acres*, more or less, and being subject to all valid easements and restrictions of record. Of the above described 10.198 acre tract, 0.209 acre is within the right of way of County Road 29;

The above description was prepared from an actual field survey made under the supervision of Paul R. Clapsaddle, Registered Surveyor 6140, during the month of April, 2022. Bearings indicated herein are based on State Plane Coordinate, North Zone, NAD 83 and GPS observations. Iron pins set are 5/8 inch by 30 inch reinforcing rods with caps marked "Clapsaddle RS 6140".

ATTEST: Paul R. Clapsaddle

Paul R. Clapsaddle, R.S. 6140  
19019 West Darby Road  
Marysville, Ohio 43040  
(937) 747-2599



INDEXED ON MAP  
8752

5-13-22

APPROVED

# PLAT OF SURVEY FOR BLAKE PALMER

STATE OF OHIO, LOGAN COUNTY  
MONROE TOWNSHIP, V.M.S. 4957

Teresa A. Morris Trustee  
original 111.072 acres, Tract III  
D.R. 1150, Pg. 294

Teresa A. Morris Trustee  
39.410 acres  
D.R. 1145, Pg. 271

Teresa A. Morris Trustee  
8.469 acres, Tract IV  
D.R. 1150, Pg. 294

Teresa A. Morris Trustee  
39.410 acres  
D.R. 1145, Pg. 271

10.198 acres

Part of Teresa A. Morris Trustee's  
39.410 acre tract  
described in D.R. 1145, Pg. 271  
(0.209 acre in Road R/W)

Jefferson Township  
Monroe Township

19.110 acres  
20.300 acres

N05°35'09"W 636.48'

S81°28'02"E 1292.62'

S67°32'04"W  
470.90'

S63°01'48"W 562.61'

30.00'

S84°24'51"W

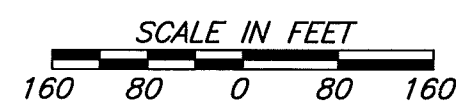
Thomas W. Godwin and C. Joan Godwin  
32.112 acres, Parcel II, Tract II  
D.R. 1063, Pg. 855

COUNTY ROAD 29 (60' wide)

C2  
Chord Bearing N85°13'26"W  
Chord Length 115.08'  
Length 115.71'  
Radius 319.91'  
Tangent 58.49'  
Delta 20°43'25"

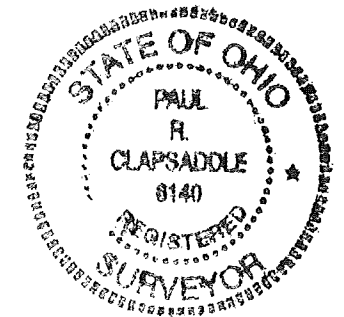
C1  
Chord Bearing N57°47'12"W  
Chord Length 187.87'  
Length 190.68'  
Radius 319.91'  
Tangent 98.27'  
Delta 34°09'03"

Access Management Information:  
County Highway 29 is a minor collector Rd.  
Minimum drive spacing is 360'  
Minimum SSD is 495'  
County Engineer has approved location of  
drive as shown.



**Paul R. Clapsaddle  
and Associates**  
REGISTERED ENGINEERS AND SURVEYORS  
19019 WEST DARBY ROAD, MARYSVILLE OHIO 43040  
(937) 747-2599  
  
Paul R. Clapsaddle, P.E., P.S.

Date: March 30, 2022  
Scale: 1"=160'  
Project: PalmerFeb22  
Drawing: PalmerFeb22



### NOTES:

Reference deeds are shown hereon

Bearings indicated hereon are based on  
State Plane Coordinate, North Zone,  
NAD 83, and GPS observations

### LEGEND:

- Magnetic nail found
- Magnetic nail set
- 5/8 inch iron pin found
- ⊙ 5/8 inch iron pin set with cap marked "CLAPSADDLE RS 6140"
- 1 inch iron rod found
- ⊙ 5/8 inch iron pin found with cap marked "LEE PS 6359"
- ⊙ 5/8 inch iron pin found with cap marked "LOGAN COUNTY"

I hereby certify that this plat was prepared from an  
actual field survey made under my supervision and  
that monuments were placed as indicated hereon.  
*Paul R. Clapsaddle*  
Paul R. Clapsaddle, R.S. #6140

INDEXED ON MAP  
8752